

**FOR SUBLEASE**  
**17,374 SF**



**11 EWALL STREET**  
**MOUNT PLEASANT, SC**





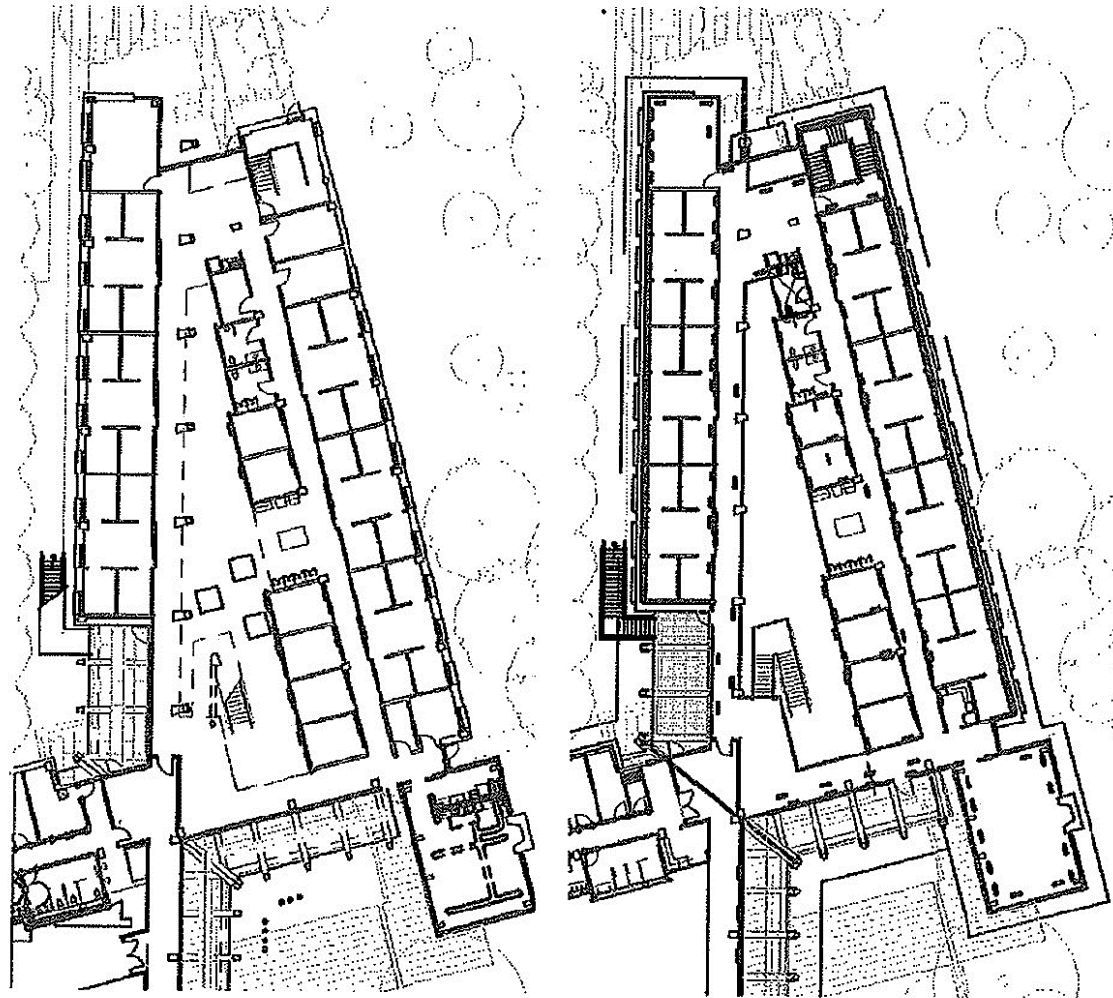
# PROPERTY HIGHLIGHTS

- Modern plug-and-play workspace with furniture
- Prime location in the heart of Mount Pleasant
- Easily Accessible from Highway 17
- Convenient access from Highway 17, just 2 miles from the Ravenel Bridge and downtown Charleston.
- Spanning approximately 18 acres of scenic natural landscapes with walking trails, ponds, and multiple outdoor gathering areas
- Private gym with locker room and showers included



# FLOORPLAN

## SHELL WING





11 EWALL STREET

# PROPERTY HIGHLIGHTS

**11 eWall Street** is a cutting-edge, move-in-ready office property in the heart of Mount Pleasant. Nestled just off Johnnie Dodds Boulevard on 18 acres of tranquil landscape featuring walking trails, ponds, and expansive outdoor spaces, this modern plug-and-play workspace offers a rare opportunity in a prime location.





# AREA SURROUNDINGS



115,395  
**POPULATION**  
*Within 5 Miles*



\$116,934  
**AVG. INCOME**  
*Within 5 Miles*



\$500,000  
**AVG. HOMEVALUE**  
*Within 5 Miles*



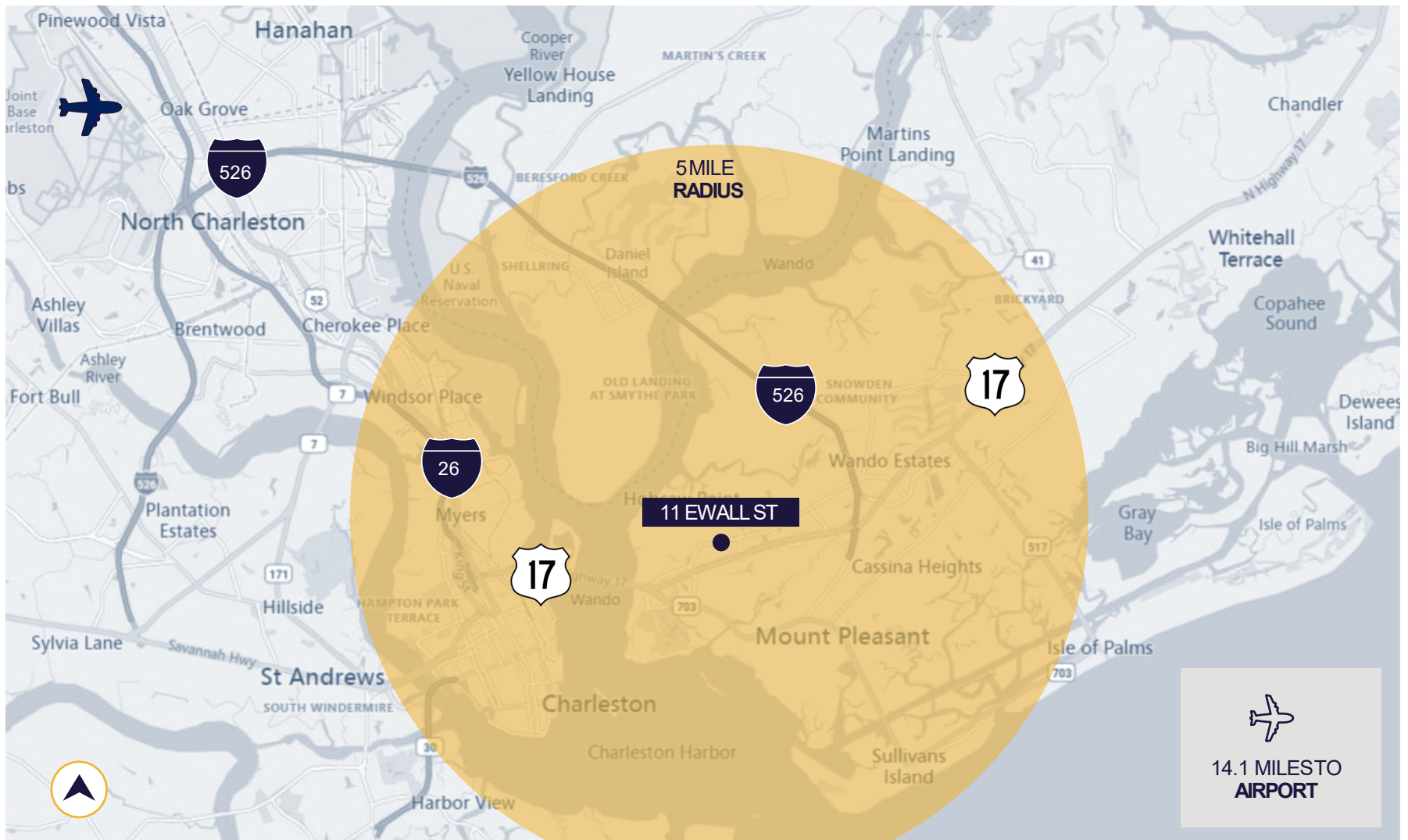
38.4  
**AVG. AGE**  
*Within 5 Miles*

304,931  
**POPULATION**  
*Within 10 Miles*

\$107,609  
**AVG. INCOME**  
*Within 10 Miles*

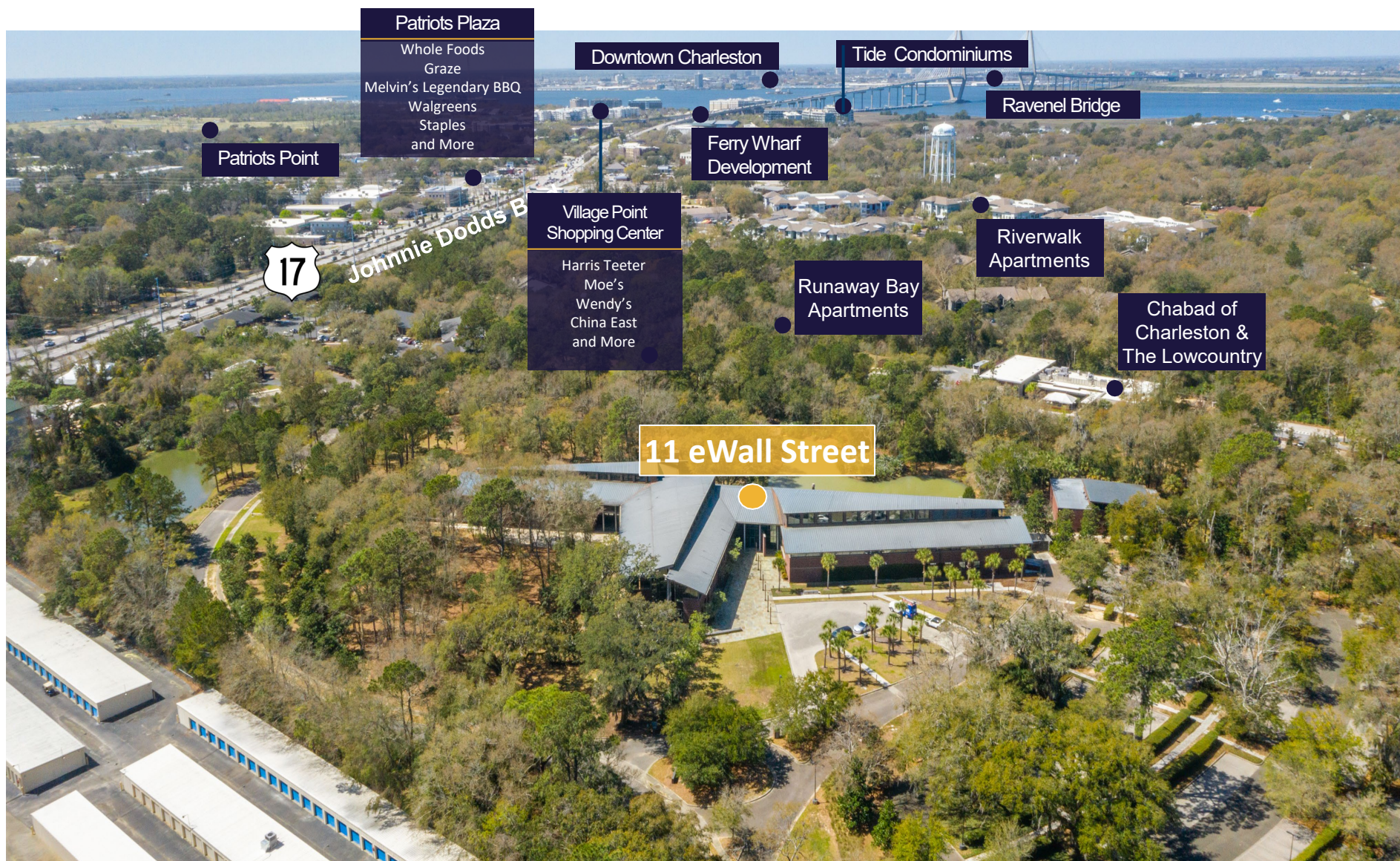
\$300,000  
**AVG. HOMEVALUE**  
*Within 10 Miles*

39.9  
**AVG. AGE**  
*Within 10 Miles*





# AREA SURROUNDINGS













# CONTACT INFORMATION

## NICK TANANA

[nick.tanana@cushwake.com](mailto:nick.tanana@cushwake.com)

+1 240 793. 4580

## BRADY DASHIELL

[brady.dashiell@cushwake.com](mailto:brady.dashiell@cushwake.com)

+1 443 655 4334

