

189 | 8TH AVENUE



CHELSEA RETAIL FOR LEASE

AT THE SOUTHWEST CORNER OF WEST 20TH STREET



HUBBNYC
PROPERTY MANAGEMENT



**CUSHMAN &
WAKEFIELD**

189 | 8TH AVENUE

AVAILABILITY

Ground: Up To 6,771 SF
Lower: 2,750 SF
Total: 9,521 SF
* Divisions underway

FRONTAGE

48 FT, 7 IN on Eighth Avenue
90 FT 8 IN on West 20th Street

POSSESSION TERM

Immediate
Long Term

LEASE TYPE

Direct

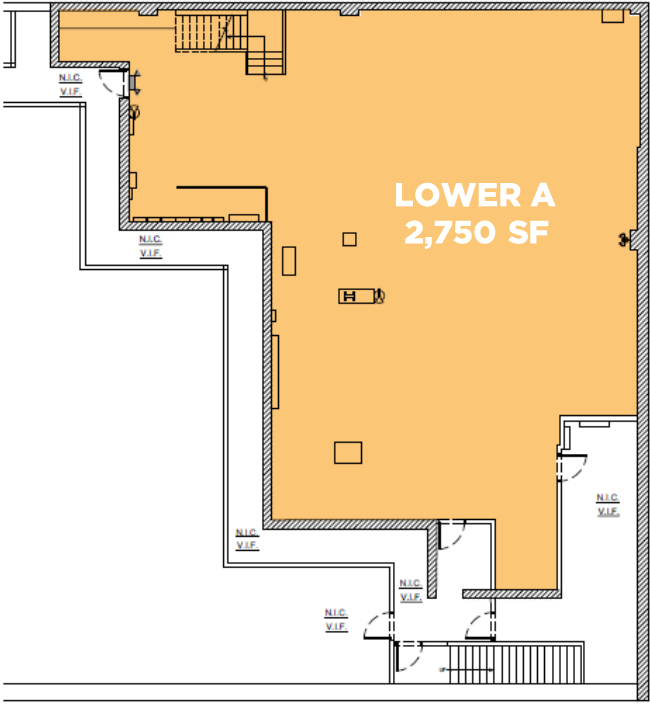
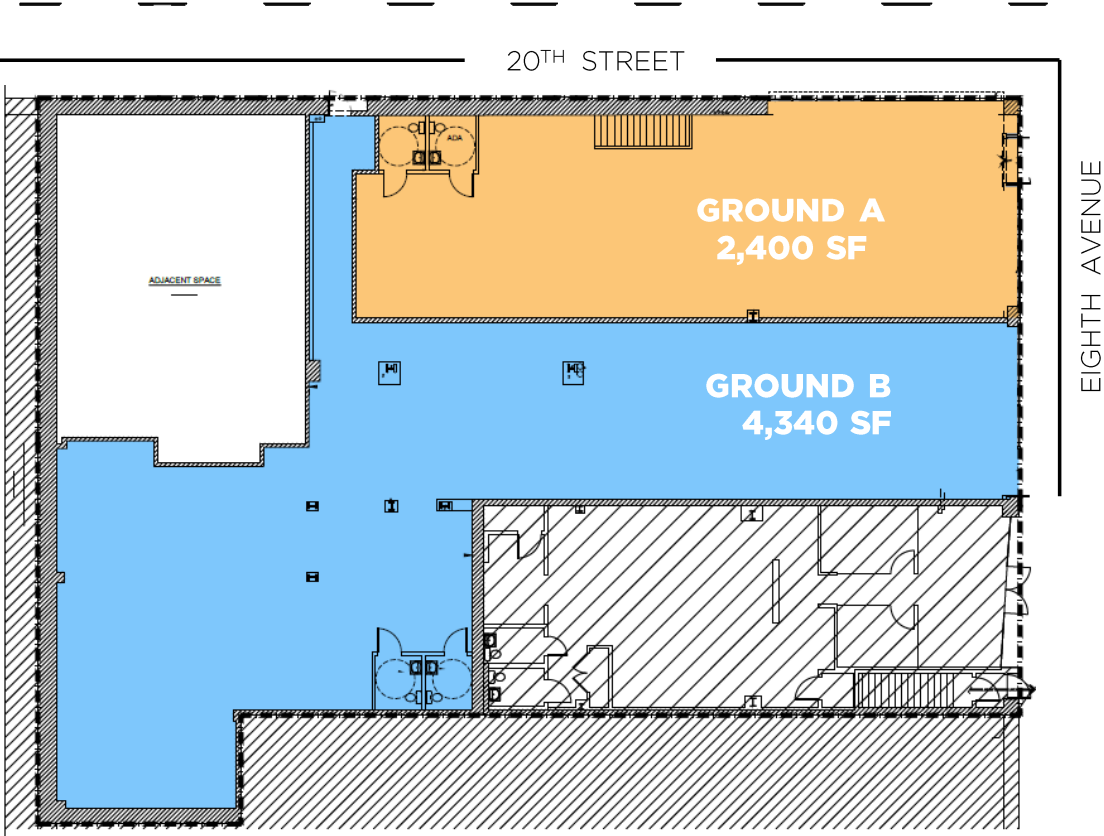
ASKING RENT

Upon Request

- Excellent Chelsea retail opportunities along Eighth Ave at West 20th Street
- Division work and storefront expansion underway by Landlord
- All quality uses considered
- Join block co-tenants: Fedex, Trek Bikes, 16 Handles, Bar Bonobo, and incoming operator Pasta de Pasta



189 8TH AVENUE



DIVISION A

GROUND	2,400 SF
LOWER	2,750 SF
TOTAL	5,150 SF

PROPOSED USES

- FOOD & BEVERAGE
- PERSONAL SERVICES
- VETERINARY

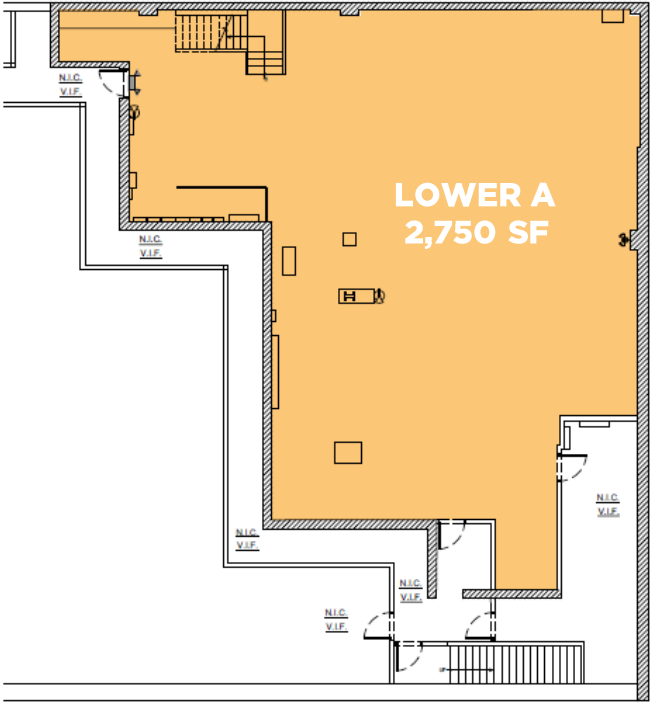
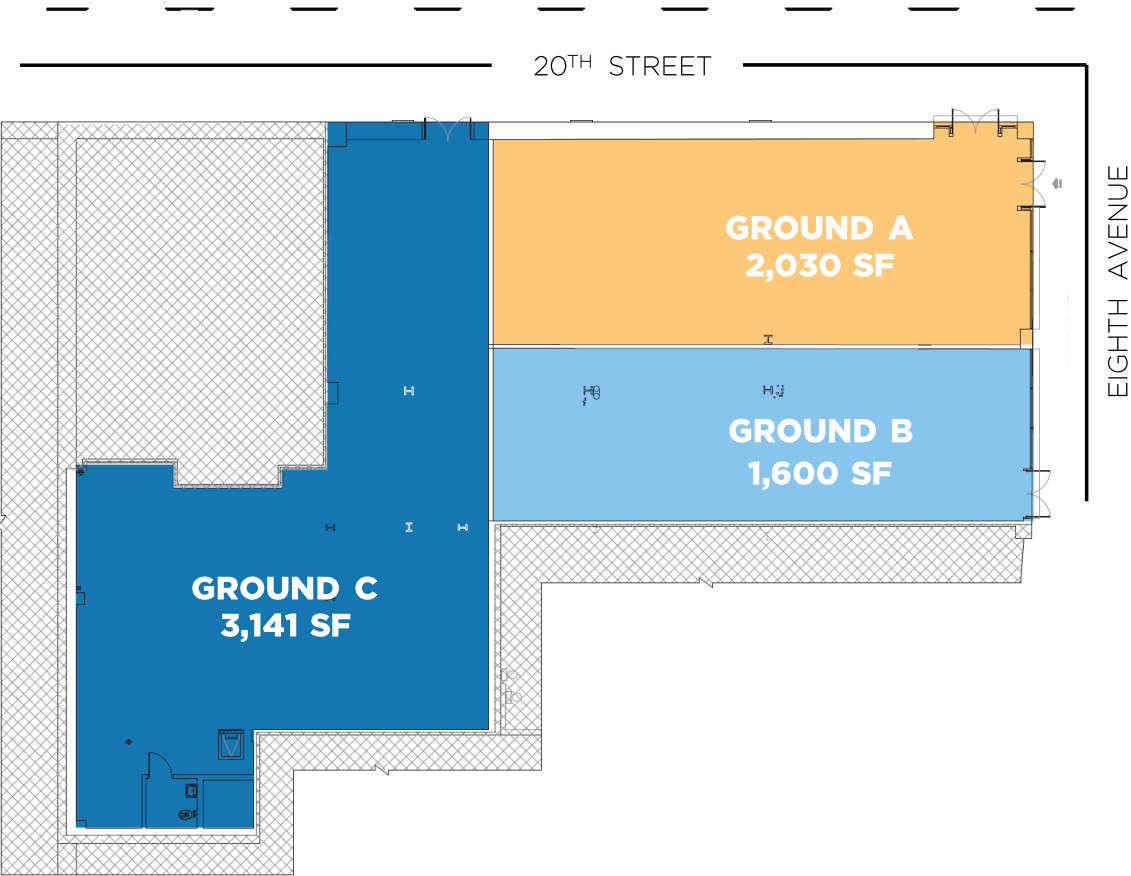
DIVISION B

GROUND	4,340 SF
TOTAL	4,340 SF

PROPOSED USES

- FITNESS & WELLNESS
- MEDICAL
- SMALL FORMAT GROCERY

189 | 8TH AVENUE



DIVISION A

GROUND	2,300 SF
LOWER	2,750 SF
TOTAL	5,050 SF

DIVISION B

GROUND	1,600 SF
TOTAL	1,600 SF

DIVISION C

GROUND	3,141 SF
TOTAL	3,141 SF

189 | 8TH AVENUE

NEIGHBORING RETAILERS & RESTAURANTS

FEDEX OFFICE & PRINT
TREK BICYCLE
LOULOU
BOURKE STREET BAKERY
OLDE CITY
DA ANDREA
SHAFFER'S
JUST SALAD
TEND DENTAL
NEW YORK SPORTS CLUB
JACK'S WIFE FRED
BANK OF AMERICA

189|8TH AVENUE

STEVEN SOUTENDIJK
(212) 713-6845
STEVEN.SOUTENDIJK@CUSHWAKE.COM

SEAN MORAN
(212) 841-7668
SEAN.MORAN@CUSHWAKE.COM

PATRICK O'ROURKE
(212) 660-7777
PATRICK.OROURKE@CUSHWAKE.COM

CATHERINE MERCK
(212) 698-2621
CATHERINE.MERCK@CUSHWAKE.COM

MADDIE HAMILTON
(313) 919-2063
MADDIE.HAMILTON@CUSHWAKE.COM

