

436

albee square

7,953 SF Lower Level Retail Space
with Private Entrance

Downtown Brooklyn ■ Between Fulton & Willoughby Streets

ADDITIONAL SIGNAGE

EXCLUSIVE LEASING AGENT:



436 albee square

Prime Downtown Brooklyn Retail Space for Lease

Directly Across from Brooklyn's Largest Food, Shopping,
and Entertainment Destination

CITYPOINT

Lower Level 7,953 SF

Ceiling Height 16'

Comments

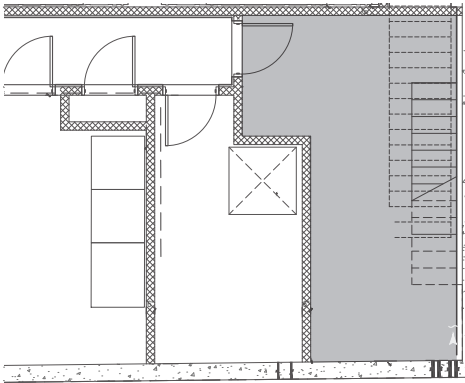
- Private Street Entrance
- 16' Ceilings on Lower Level
- 5 ADA Restrooms Total
- All Uses Considered
- Steps from Subways **B** **Q** **R** at Dekalb Ave
and **2** **3** at Hoyt St



Lower Level
7,953 SF

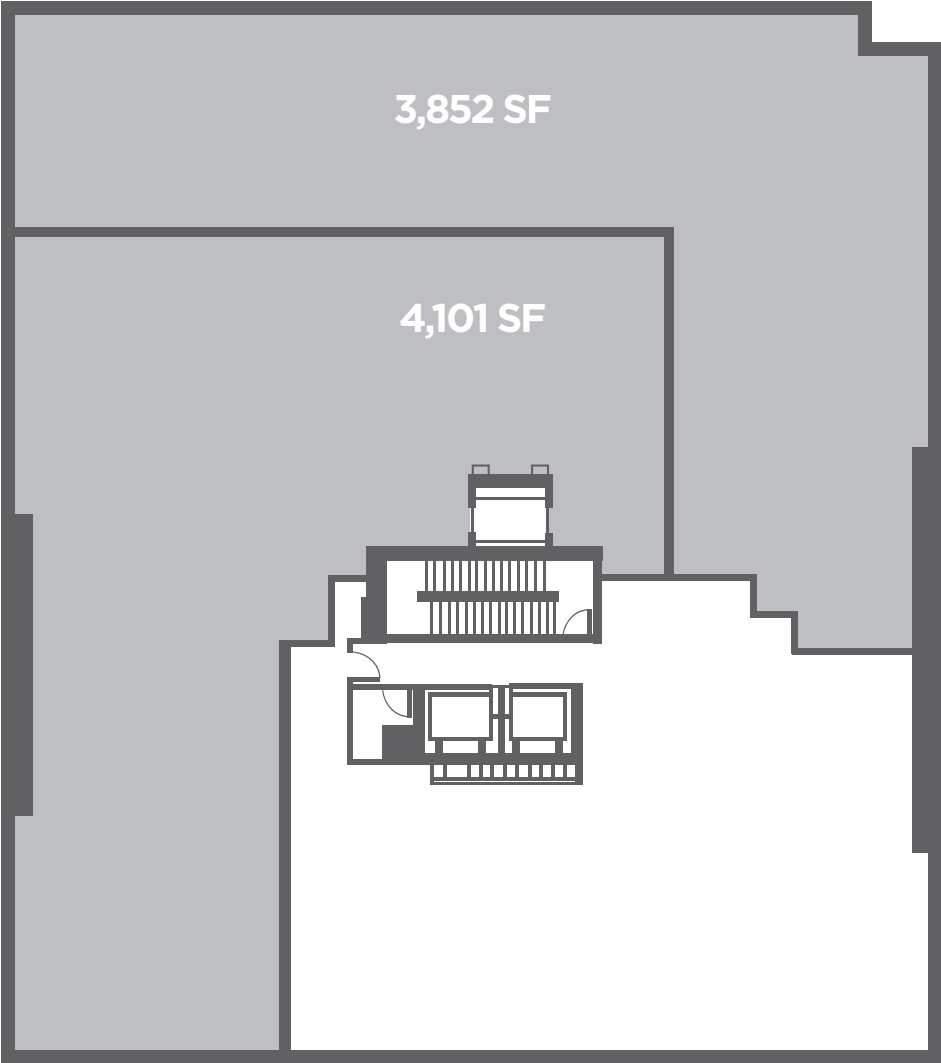
Ceiling Height
16'

Ground Floor

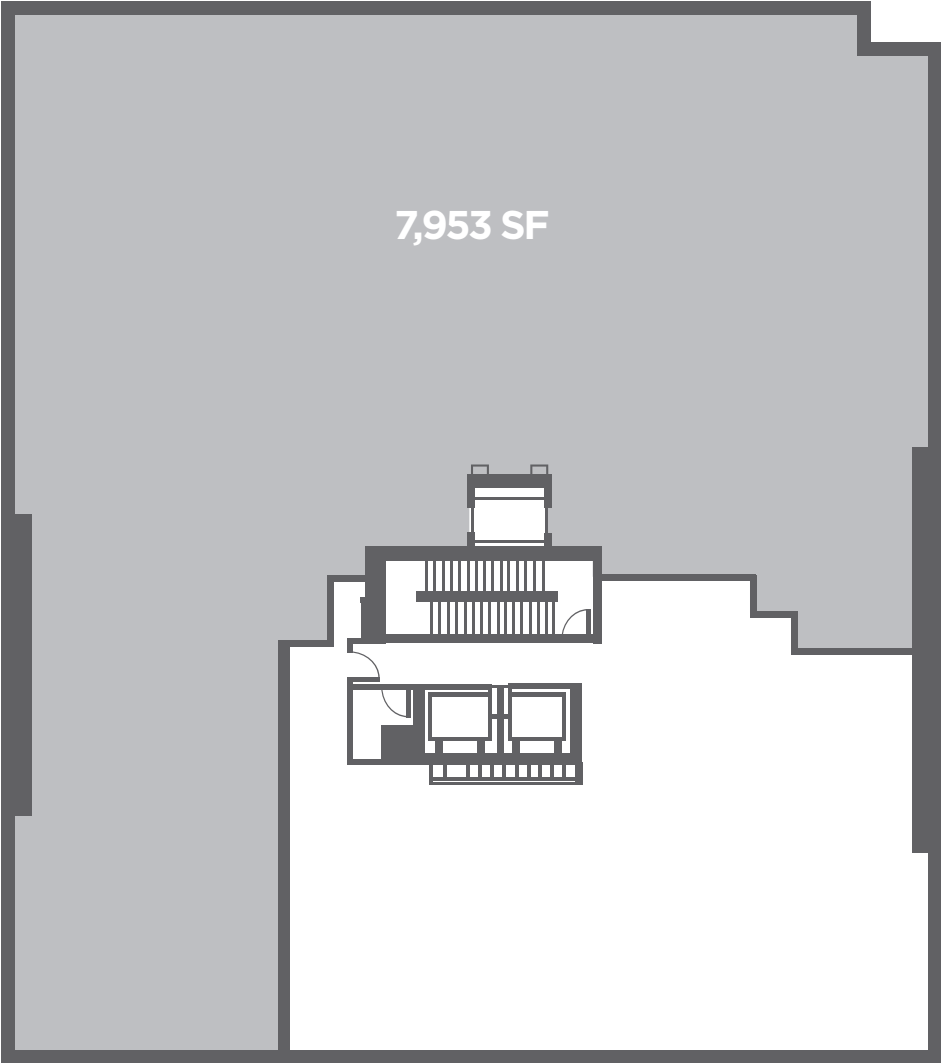


PRIVATE ENTRANCE
FACING ALBEE SQUARE

LOWER LEVEL - CURRENT DIVISIONS



LOWER LEVEL - TOTAL



436 albee square

57K
STUDENTS IN
SURROUNDING
11
COLLEGES

APPROX
30K
DAILY PEDESTRIAN
COUNT

\$1,400
DAILY AVERAGE
SALES PER SF

2.3M
HOYT ST STATION
ANNUAL RIDERSHIP
2 3



Albee Square is a bustling destination for shopping and entertainment

Retail Neighbors Include

Planet Fitness, Trader Joe’s, Primark, Target, Chipotle, Champs Sports, Burlington, H&M, Old Navy, lululemon, Macy’s, DIG, Starbucks, Golfzon & more





EXCLUSIVE LEASING AGENT:



NEIL SETH | 212 841 5063
neil.seth@cushwake.com

KENJI OTA | 212 841 5909
kenji.ota@cushwake.com

KATHRYN CRUZ | 212 660 7766
kathryn.cruz@cushwake.com

JENNIFER KONEFSKY | 212 698 2608
jennifer.konefsky@cushwake.com