

# 1005 GALLUP DRIVE

OMAHA, NE 68102

96,400 SF CLASS A OFFICE BUILDING

Sublease Rate: \$29.00/SF NNN



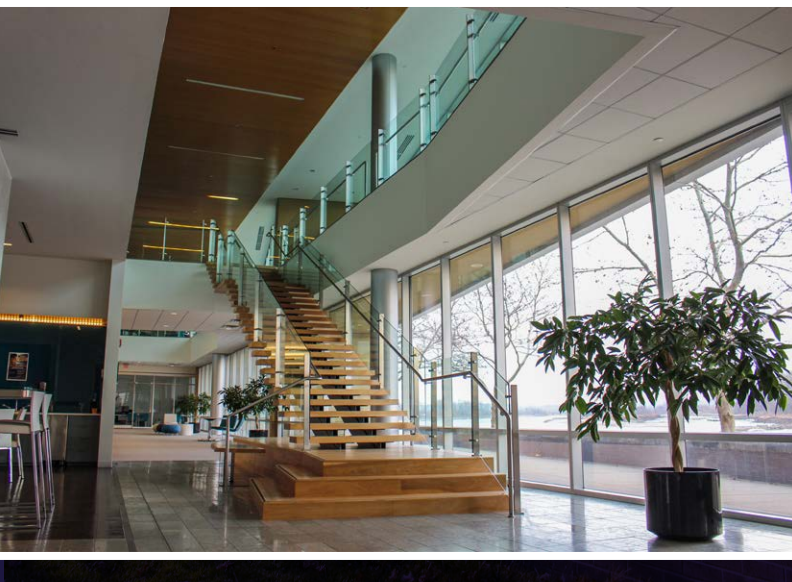
CUSHMAN &  
WAKEFIELD

LUND  
COMPANY



# PROPERTY OVERVIEW

1005 Gallup Drive is a 96,400 SF mixed use four-story open concept Class A office building built in 2009. With floor plans ranging from  $\pm 15,896$  SF to  $\pm 27,364$  SF and host to a roof-level green space accessible on the fourth floor, this space perfect for any business that is ready to make an impression.







## PROPERTY DETAILS

Sublease Rate	\$29.00 PSF NNN
Total Building Size	96,400 SF
Minimum Divisible	15,896 SF
Maximum Contiguous	±94,812 SF
Year Built	2009
Zoning	MU - Mixed Use





# CONFERENCE CENTER



The property offers access to a variety of high-class common area conference room amenities. It features a 140-person lecture-style conference room, a 30-person lecture-style conference room, and a large conference room that can be divided into four sections, each of which can accommodate 90 individuals.





# MEEETING ROOMS



All meeting rooms are integrated with 'Logitech Tap' conference room projection equipment allowing users to integrate with any room with a click of a button. There are four larger meeting rooms that have a capacity of 14 people with six additional scenic conference rooms that overlook the Missouri River and have a capacity of six to ten people. Lastly, there is a spacious executive conference room that holds 16 people with panoramic views of the Missouri River.

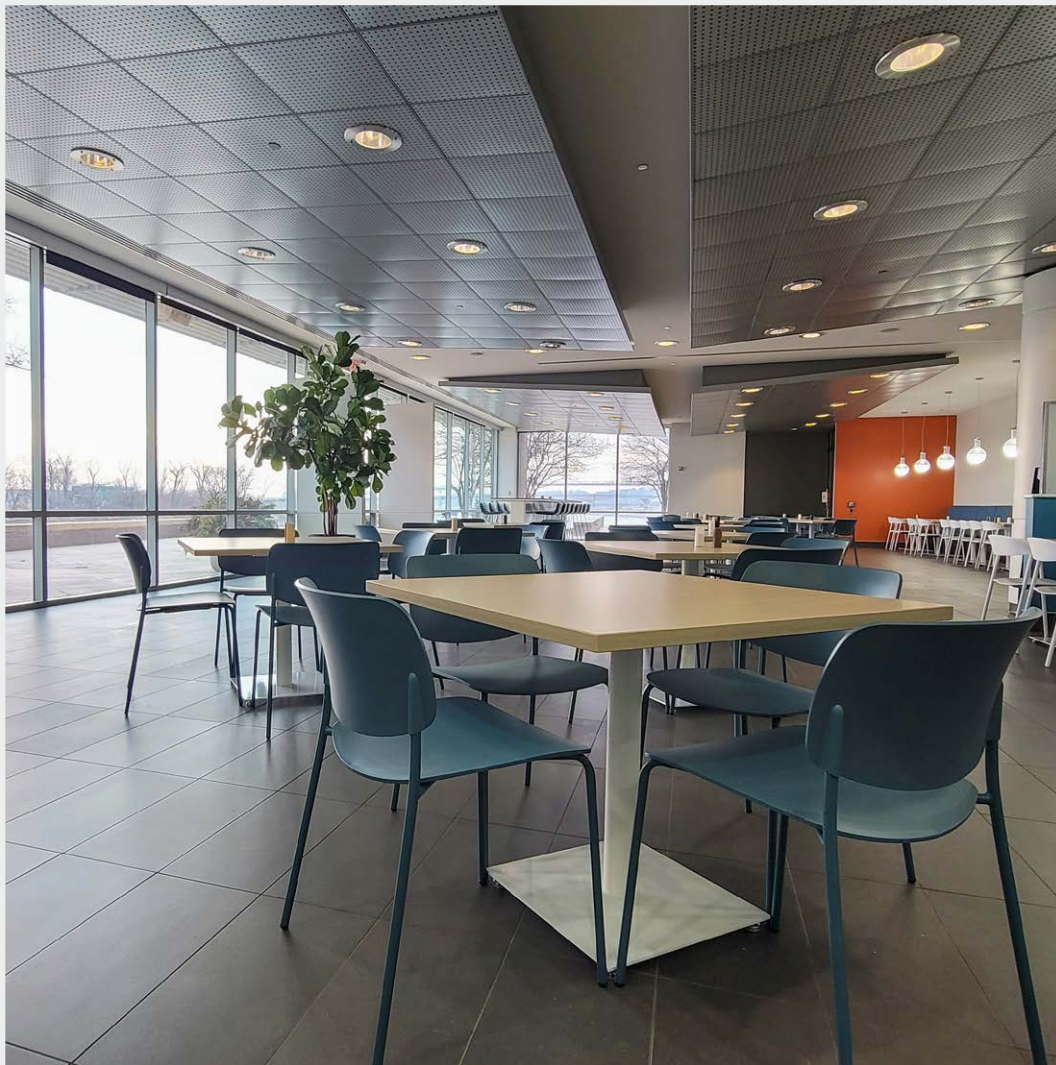






# ON-SITE CAFETERIA

This on-site cafeteria sits at the intersection between the North and South buildings providing the perfect spot to meet with coworkers, grab a quick snack or take a seat and enjoy any of the daily breakfast or lunch options. This cafeteria has a large capacity with plenty of natural light including outdoor eating options with scenic views of the Missouri River.





# ON-SITE DAYCARE



On-site daycare is also provided with accommodations to kids of all 'preschool' aged kids. Well-trained staff and proximity to the office offers peace-of-mind and an ease to your commute that can't be beat.

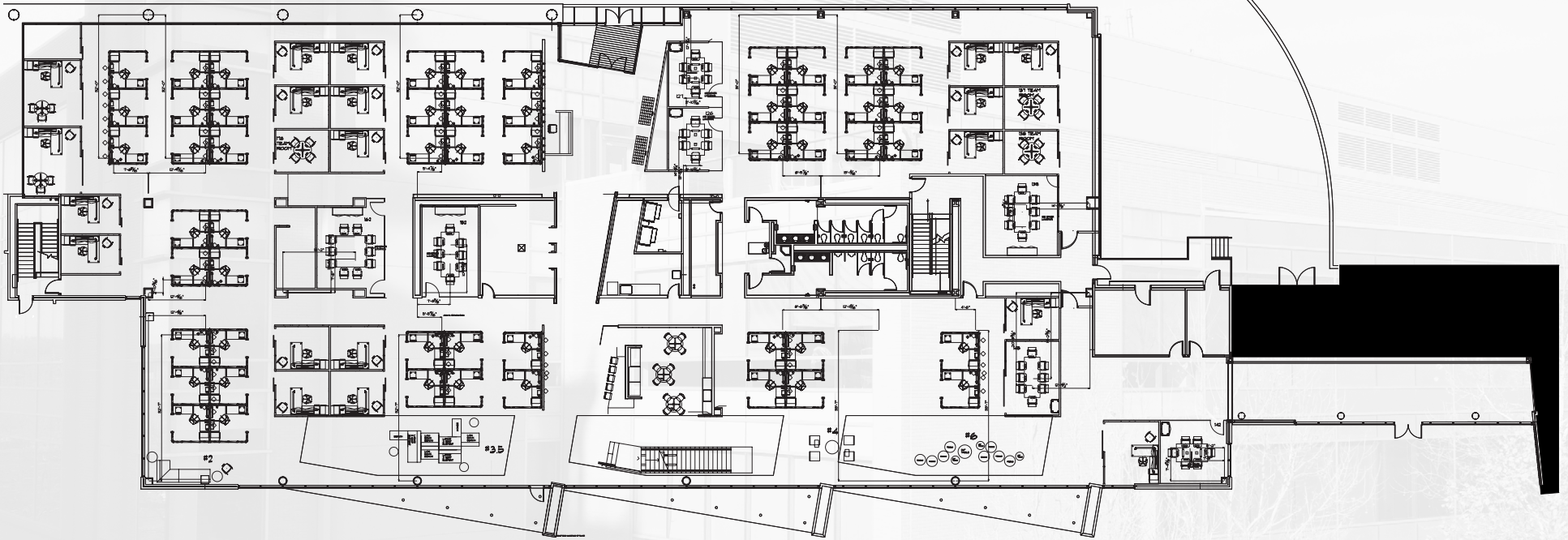


# FLOOR PLAN

## FIRST FLOOR

±25,776 SF

\$29.00 /PSF/NNN



\*\*\*Floor plans are approximate and for illustration purposes only.

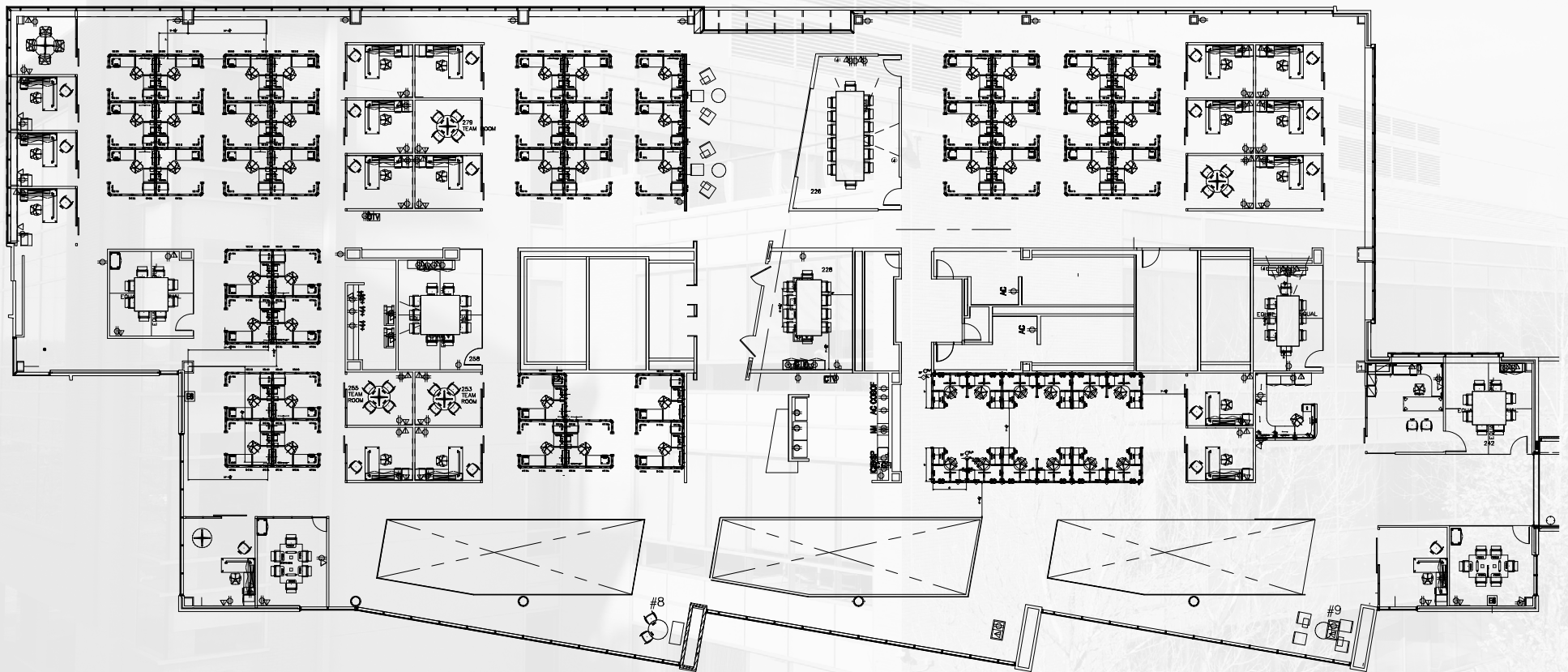


# FLOOR PLAN

## SECOND FLOOR

± 27,364 SF

\$29.00 /PSF/NNN



\*\*\*Floor plans are approximate and for illustration purposes only.



# FLOOR PLAN

## THIRD FLOOR

± 27,364 SF

\$29.00 /PSF/NNN



\*\*\*Floor plans are approximate and for illustration purposes only.

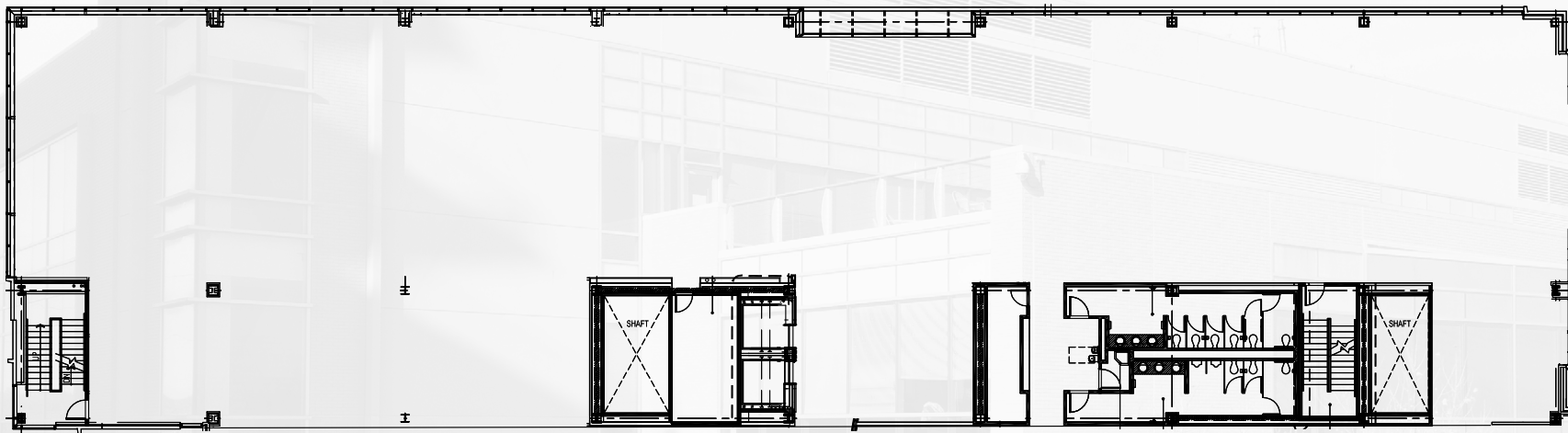


# FLOOR PLAN

## FOURTH FLOOR

±15,896 SF

\$29.00 /PSF/NNN

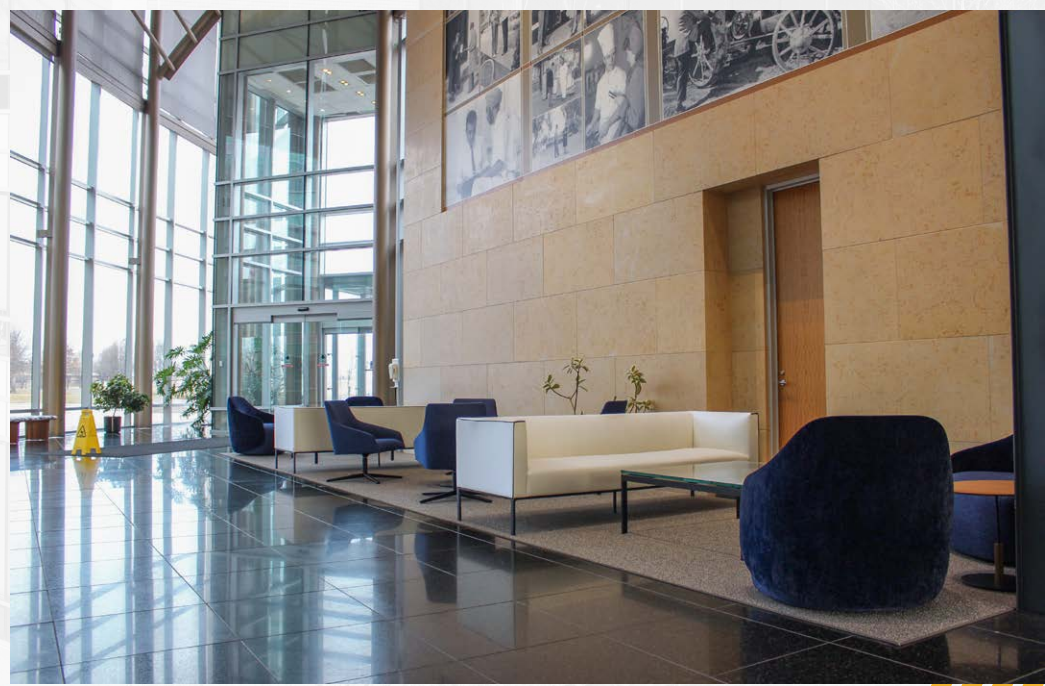
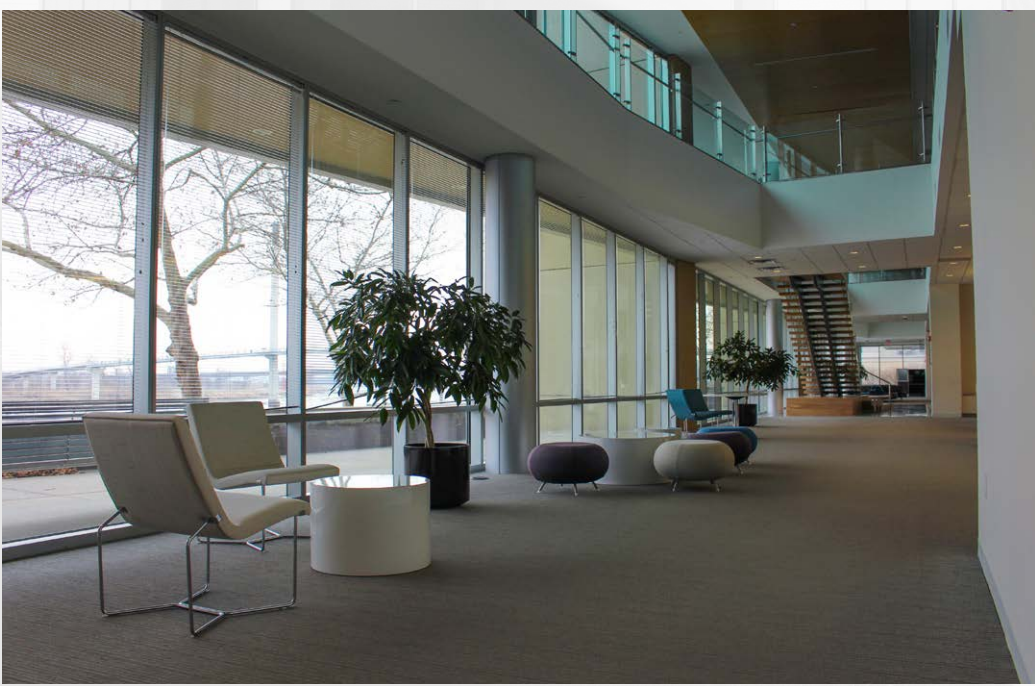
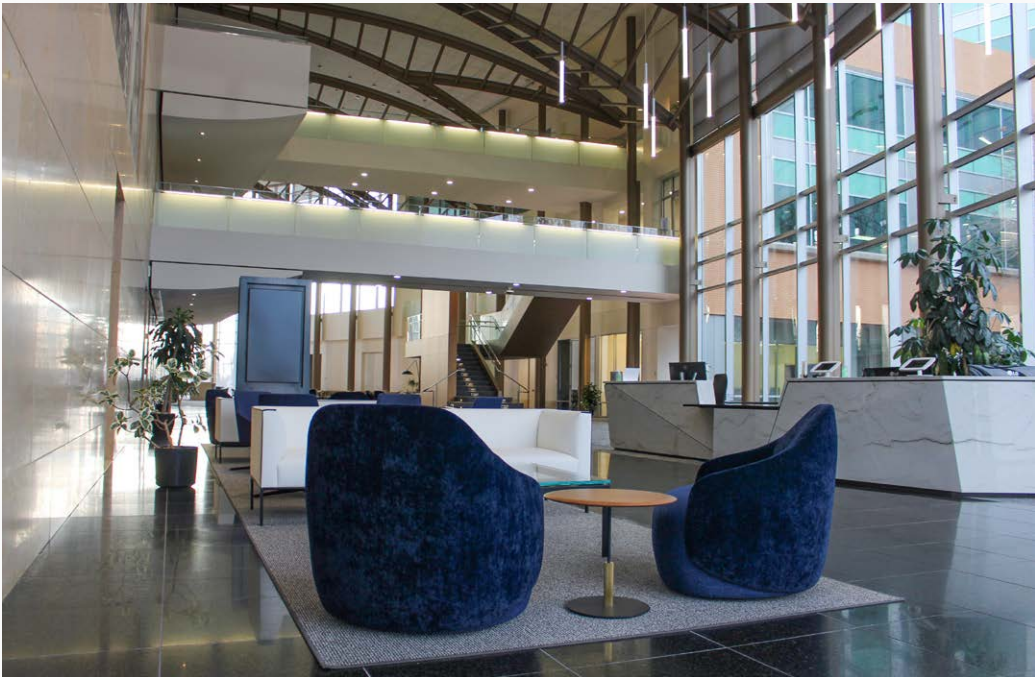


N →

\*\*\*Floor plans are approximate and for illustration purposes only.



# PROPERTY PHOTOS

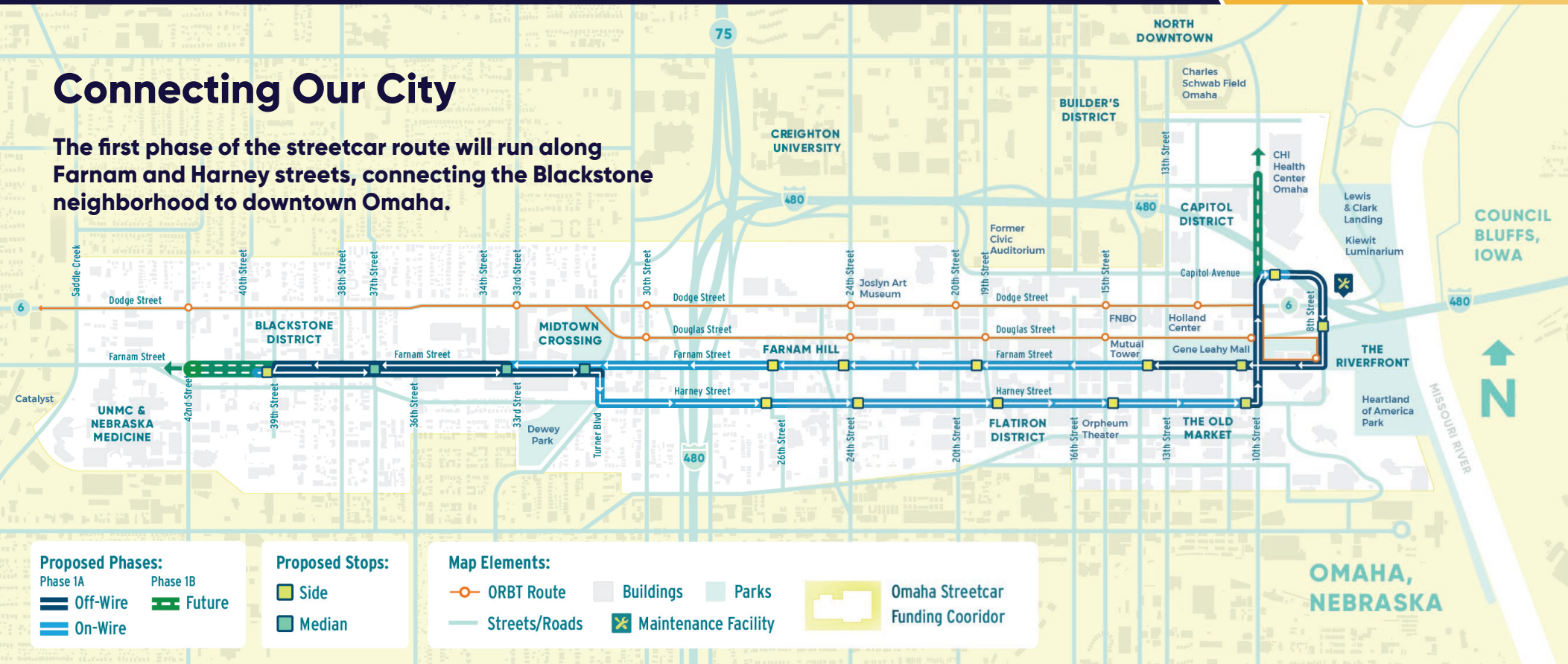




# OMAHA STREETCAR

## Connecting Our City

The first phase of the streetcar route will run along Farnam and Harney streets, connecting the Blackstone neighborhood to downtown Omaha.



This rendering shows a streetcar stop in the center of the road, with access from both sides, on Farnam Street in Midtown.

## Free To Ride

Omaha's streetcar will be free to ride, so passengers can hop on and hop off without paying for a ticket.

Riders will be able to board the streetcar every 10 to 15 minutes at each of the **16 stops along the route**. Here's what else to know about the route:

- Our streetcars will be powered by an overhead wire on hilly sections of the route and an onboard battery on flat sections
- The vehicles will be 100% accessible, with a low floor that is level to the boarding platform, allowing easier access for all passengers, including people with mobility needs, parents with strollers, travelers with luggage, cyclists and others
- Most of the stops will be located on one side of the roadway. Others, like those in the Midtown and Blackstone neighborhoods, will be in the middle of the street, accessible from either side



# AERIAL MAP







For more information, please contact:

**TJ Twit, Jr.**

Executive Director of Investment

+1 402 212 5476

[tj.twit@lundco.com](mailto:tj.twit@lundco.com)

**Martin Patzner, SIOR, CCIM, CPM®, RPA**

Vice President, Office Specialist

+1 402 616 5033

[martin.patzner@lundco.com](mailto:martin.patzner@lundco.com)

450 Regency Parkway, Suite 200

Omaha, NE 68114

+1 402 393 8811

[lundco.com](http://lundco.com)

*Independently Owned and Operated / A Member of the Cushman & Wakefield Alliance*

©2025 Cushman & Wakefield. All rights reserved. The information contained in this communication is strictly confidential. This information has been obtained from sources believed to be reliable but has not been verified. NO WARRANTY OR REPRESENTATION, EXPRESS OR IMPLIED, IS MADE AS TO THE CONDITION OF THE PROPERTY (OR PROPERTIES) REFERENCED HEREIN OR AS TO THE ACCURACY OR COMPLETENESS OF THE INFORMATION CONTAINED HEREIN, AND SAME IS SUBMITTED SUBJECT TO ERRORS, OMISSIONS, CHANGE OF PRICE, RENTAL OR OTHER CONDITIONS, WITHDRAWAL WITHOUT NOTICE, AND TO ANY SPECIAL LISTING CONDITIONS IMPOSED BY THE PROPERTY OWNER(S). ANY PROJECTIONS, OPINIONS OR ESTIMATES ARE SUBJECT TO UNCERTAINTY AND DO NOT SIGNIFY CURRENT OR FUTURE PROPERTY PERFORMANCE.