

2373 N WATNEY WAY

FAIRFIELD // CALIFORNIA

FOR SUBLEASE: ±104,462 SF WAREHOUSE BUILDING



TYLER EPTING

Managing Director
925 627 2897
tyler.epting@cushwake.com
Lic #01317533

TREVOR BUCK

Executive Managing Director
415 451 2436
trevor.buck@cushwake.com
Lic #00902154

KRIS HAGAR

Senior Director
925 382 8887
kris.hagar@cushwake.com
Lic #02009499

2373 N WATNEY WAY

FAIRFIELD // CALIFORNIA

PROPERTY FEATURES



BUILDING SIZE

±104,462 SF



WAREHOUSE

±83,808 SF



OFFICE

11,876 SF 2-story main
±720 warehouse office



DOCK DOORS

6



GRADE LEVEL DOORS

1



CLEAR HEIGHT

22'-23'



SPRINKLER DENSITY

.495/2,000 SF



COLUMN SPACING

44' x 48' (typical)



POWER

2,000 amps/480 volt,
3-phase service
(Tenant to verify)



AIR-CONDITIONED

7,881 SF
3,125 SF - 1ST FLOOR
4,756 SF - 2ND FLOOR



FREIGHT ELEVATOR

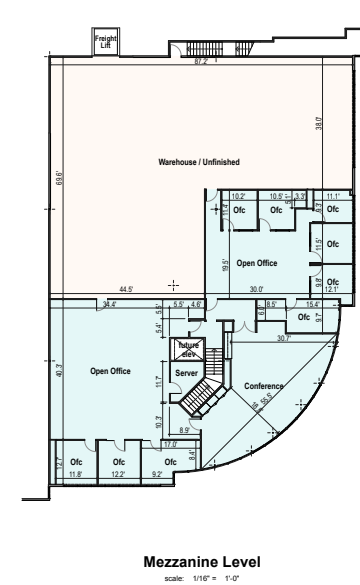
to 2nd floor mezzanine



PARKING

177 Spaces

Lease expires December 31, 2027



2373 N WATNEY WAY

FAIRFIELD // CALIFORNIA

