



CUSHMAN &
WAKEFIELD



INWOOD LOGISTICS CENTER

AT JFK INTERNATIONAL AIRPORT

FOR IMMEDIATE LEASE



CAMPUS OVERVIEW

95 INIP DRIVE

BUILDING SIZE:	137,390 SF
AVAILABLE WAREHOUSE:	45,437 SF
AVAILABLE LAND:	8,000 SF
CEILING HEIGHT:	15'5" - 24'
LOADING DOCKS:	3 (Can add 3 additional)
DRIVE-IN DOORS:	1
COLUMN SPACING:	30' x 25'
POWER:	800 Amps
OCCUPANCY:	Immediate

40-100 INIP DRIVE

BUILDING SIZE:	141,449 SF
AVAILABLE WAREHOUSE:	87,129 SF
AVAILABLE LAND:	TBD
CEILING HEIGHT:	25'5" - 37'
LOADING DOCKS:	7
DRIVE-IN DOORS:	2
COLUMN SPACING:	30' x 30' 30' x 25'
POWER:	600 Amps
OCCUPANCY:	Immediate

475 DOUGHTY BOULEVARD

BUILDING SIZE:	78,151 SF
AVAILABLE WAREHOUSE:	41,500 SF
AVAILABLE LAND:	10,500 SF
CEILING HEIGHT:	16'
LOADING DOCKS:	4
DRIVE-IN DOORS:	1
COLUMN SPACING:	30' x 30'
POWER:	1,200 Amps
OCCUPANCY:	Immediate

95 INIP DRIVE



BUILDING

45,437 SF GROUND



PARKING

8,000 SF



LOADING

3 DOCKS
1 DRIVE-IN



HIGHLIGHTS

ABILITY TO ADD 3
ADDITIONAL LOADING DOCKS
BRAND NEW ROOF
AVAILABLE IMMEDIATELY
BONUS 18,000 SF AVAILABLE
ON 2ND FLOOR



CLEAR HEIGHT

15'5" - 24'



COLUMN SPACE

30' X 25'



POWER

800 AMPS



40 & 100 INIP DRIVE



BUILDING

87,129 SF GROUND



PARKING

151 CAR SPACES
8 TRAILER DROPS



LOADING

7 DOCKS
2 DRIVE-INS



HIGHLIGHTS

3-SIDE LOADING DOCK
CONFIGURATION WITH 70', 89',
& 150' TRUCK COURT DEPTHS



CLEAR HEIGHT

25'5" - 37'



COLUMN SPACE

30' X 30' | 30' X 25'

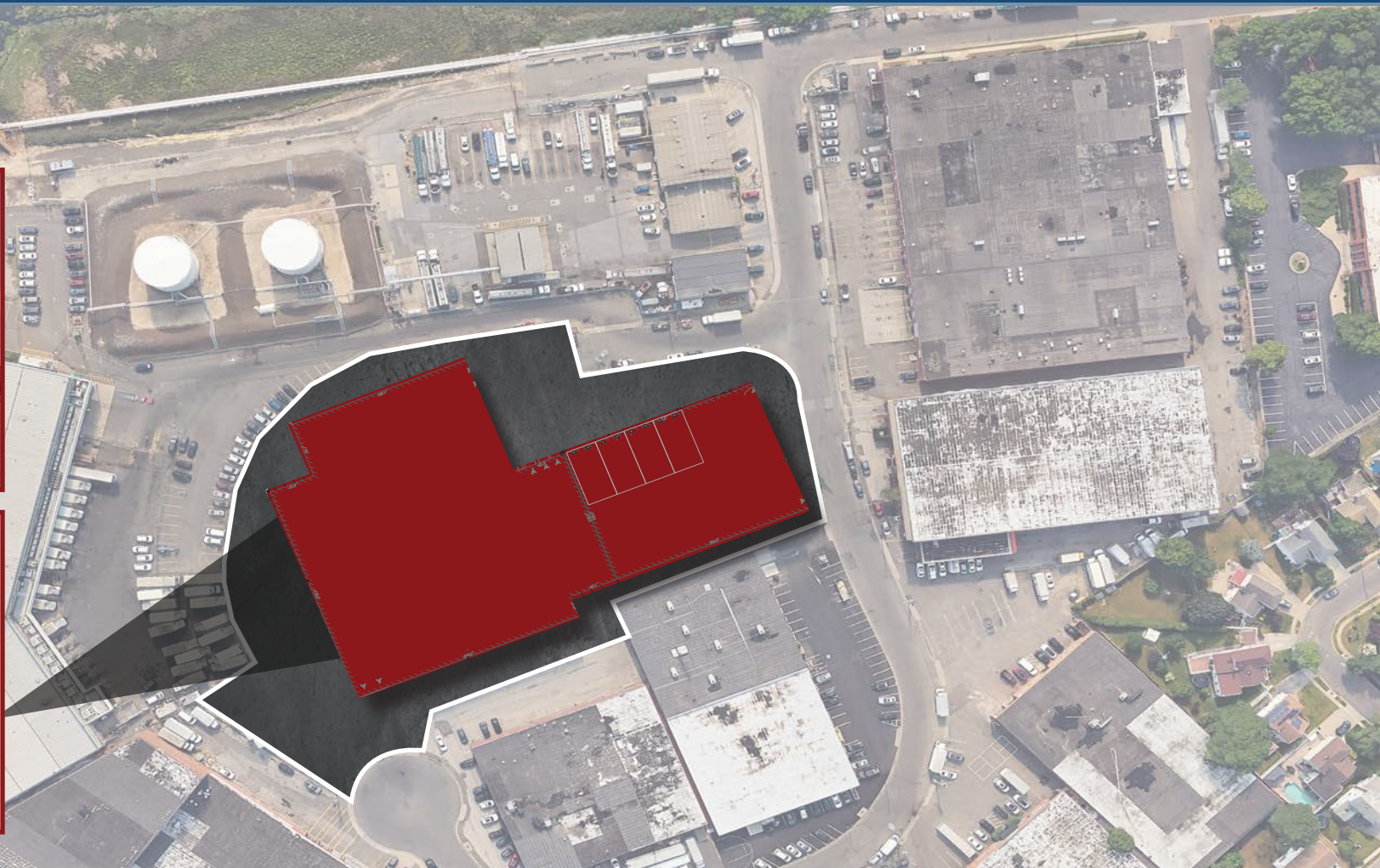


POWER

600 AMPS

DEDICATED AREA FOR
OVERNIGHT TRAILER PARKING

ROOM FOR +8 DOCKS/DOORS



100 INIP DRIVE (PROPOSED)



BUILDING

54,320 SF GROUND



PARKING

73 CAR SPACES
27 TRAILER DROPS



LOADING

16 DOCKS



HIGHLIGHTS

DELIVERED WITH A NEW
FENCED-IN, SECURED TRUCK
COURT



CLEAR HEIGHT

25'5"



COLUMN SPACE

25' X 25'

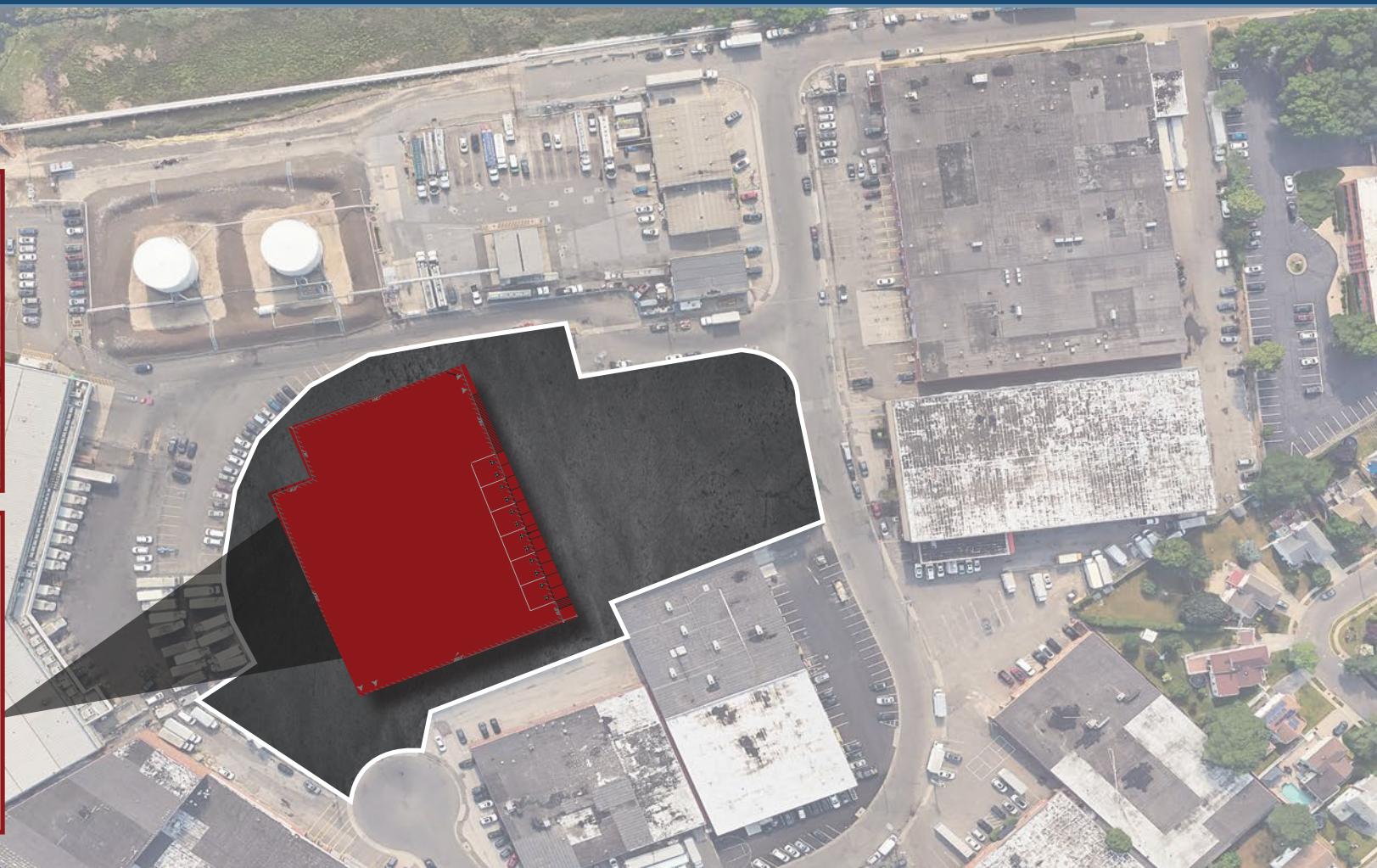


POWER

1,600 AMPS

IDEAL "COUNTERCLOCKWISE"
TRUCK FLOW

INQUIRE FOR MORE DETAILS



475 DOUGHTY BOULEVARD



BUILDING

41,500 SF GROUND



PARKING

10,500 SF



LOADING

4 DOCKS
1 DRIVE-IN



HIGHLIGHTS

FINISHED OFFICE SPACE
DEDICATED ON-SITE PARKING



CLEAR HEIGHT

16'



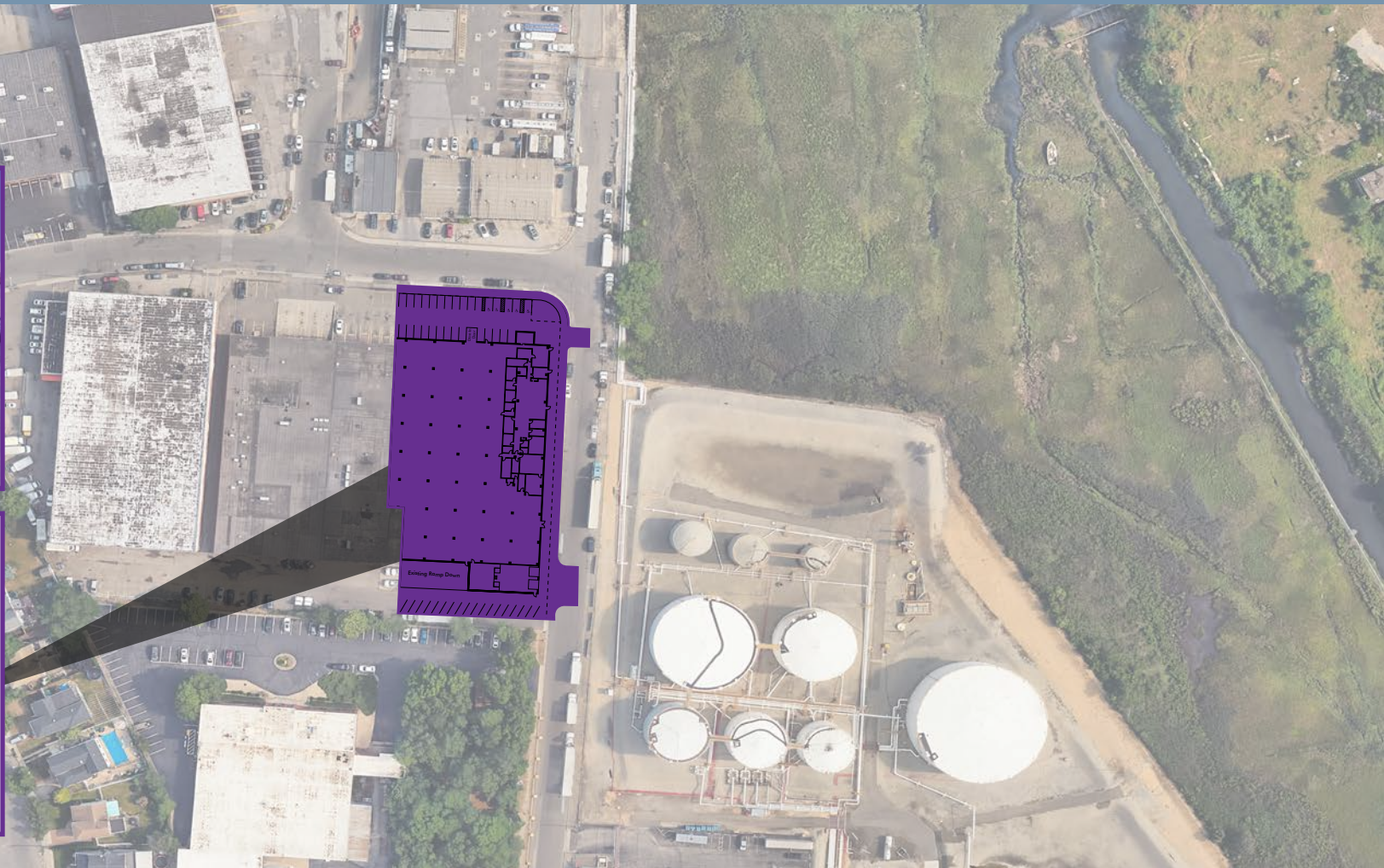
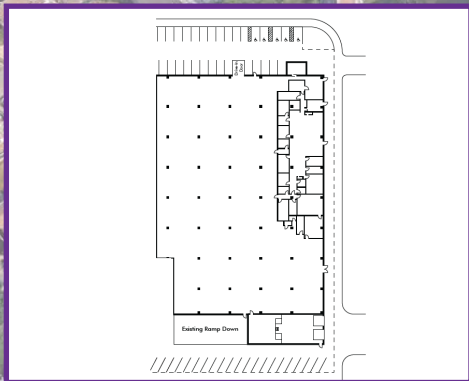
COLUMN SPACE

30' X 30'

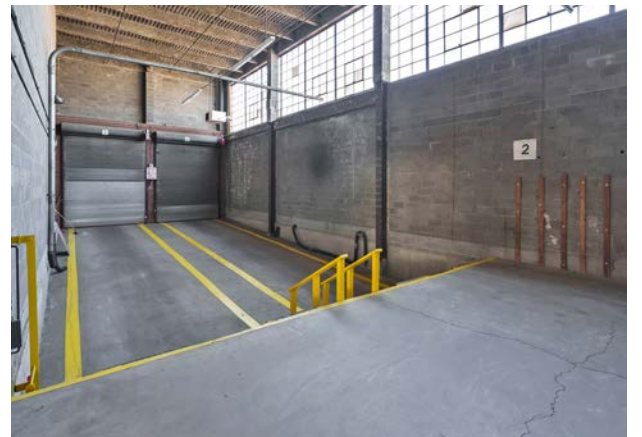
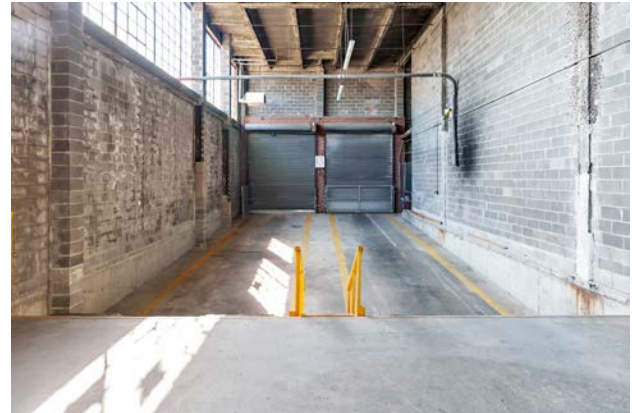


POWER

1,200 AMPS



PROPERTY PHOTOS



JFK ACCESSIBILITY



**JFK
INTERNATIONAL
AIRPORT**



**JFK
SERVICE
ENTRANCES**



DRIVE DISTANCE	CONSUMERS	POPULATION	AVG HH INCOME
10 MILES	1,432,796	2,373,742	\$138,660
20 MILES	5,570,171	11,164,915	\$149,186
30 MILES	7,811,243	15,011,033	\$153,004



**INWOOD
LOGISTICS
CENTER**

**↑ TO ROUTE I-678
NORTHBOUND**

PENINSULA BLVD

BURNSIDE AVE

878

**↓ FROM ROUTE I-678
SOUTHBOUND**

CORPORATE NEIGHBORS INWOOD LOGISTICS CENTER





FOR MORE INFORMATION, **CONTACT:**

HELEN M. PAUL
+1 212 841 7575
helen.paul@cushwake.com

RICO T. MURTHA
+1 212 390 1368
rico.murtha@cushwake.com

THOMAS DELUCA
+1 631 425 1237
thomas.deluca@cushwake.com

SONNY SINGH
+1 718 275 5478
sonny.singh@cushwake.com

DAVID FRATTAROLI
+1 516 859 6396
david.frattaroli@cushwake.com

JOHN GIANNUZZI
+1 631 425 1228
john.giannuzzi@cushwake.com



VIEW PROPERTY
WEBSITE [HERE](#)



©2025 Cushman & Wakefield. All rights reserved. The information contained in this communication is strictly confidential. This information has been obtained from sources believed to be reliable but has not been verified. NO WARRANTY OR REPRESENTATION, EXPRESS OR IMPLIED, IS MADE AS TO THE CONDITION OF THE PROPERTY (OR PROPERTIES) REFERENCED HEREIN OR AS TO THE ACCURACY OR COMPLETENESS OF THE INFORMATION CONTAINED HEREIN, AND SAME IS SUBMITTED SUBJECT TO ERRORS, OMISSIONS, CHANGE OF PRICE, RENTAL OR OTHER CONDITIONS, WITHDRAWAL WITHOUT NOTICE, AND TO ANY SPECIAL LISTING CONDITIONS IMPOSED BY THE PROPERTY OWNER(S). ANY PROJECTIONS, OPINIONS OR ESTIMATES ARE SUBJECT TO UNCERTAINTY AND DO NOT SIGNIFY CURRENT OR FUTURE PROPERTY PERFORMANCE.

