

12400 HIGH BLUFF DRIVE



HOME TO SAN DIEGO'S MOST PRESTIGIOUS COMPANIES

Located in Del Mar Heights in the heart of San Diego County, 12400 High Bluff Drive offers the perfect balance between quality of life and quality work environment. Neighbors include industry leaders in technology, healthcare, life science, finance and legal.

The intimate, Class-A campus is surrounded by world-class recreation and lifestyle choices close to San Diego's top neighborhoods: Del Mar, Camrle Valley, La Jolla, Solana Beach, Encinitas, Del Sur, and Rancho Santa Fe.



210,000 SF

6-Story, Class-A Workplace



~35,000 SF

Large, Flexible Floor Plate



LEED GOLD

Certified



5/1,000

Parking Ratio

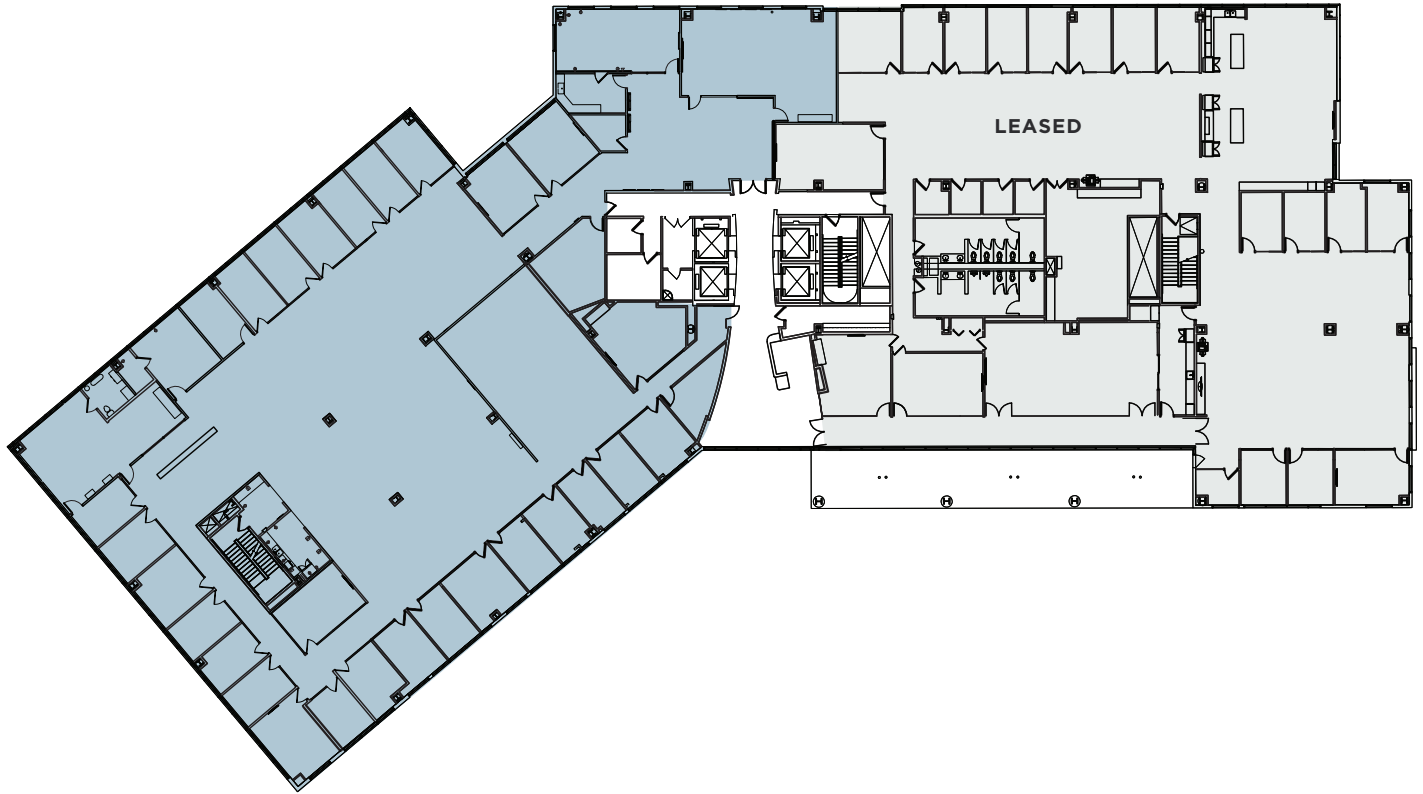


VISIBILITY

To I-5 with Over 250,000
Cars Per Day

AVAILABILITIES // 6TH FLOOR

Suite 650 - 18,415 SF



BRETT WARD
858.546.5470
brett.ward@cushwake.com
CA Lic. 01426040

MICHAEL CASSOLATO
858.546.5434
michael.cassolato@cushwake.com
CA Lic. 01893847