

OFFICE FOR LEASE

500 MONTGOMERY

SAN FRANCISCO, CA



AT THE CENTER OF PLACE & SPACE

PROPERTY HIGHLIGHTS

500 Montgomery stands as a timeless and modernized office environment, inspiring creative work with proximity to a number of San Francisco staples and amenities. With great exterior visibility and inspiring interior spaces, make 500 Montgomery home for your next great venture!



6,807 RSF
available now



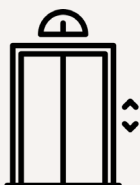
Ground and lower level with
interconnected stairwell



High ceiling event
area potential



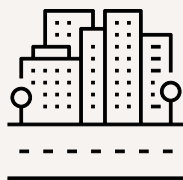
Unique identity
architectural space



Elevator accessible
with full HVAC



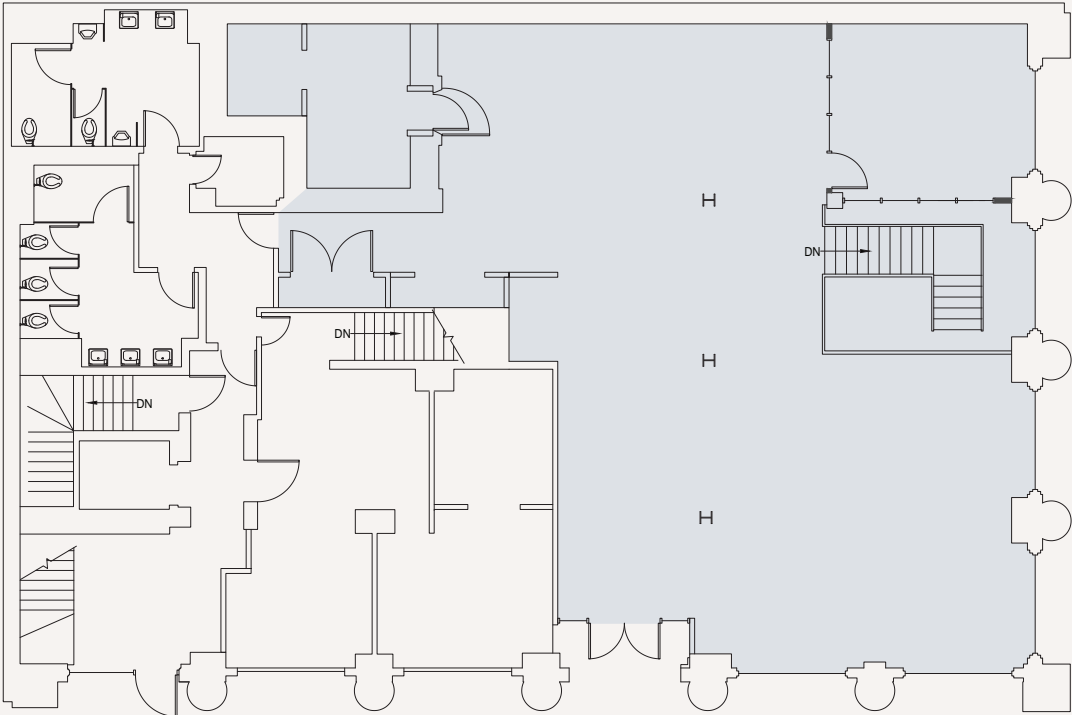
Private ground floor
entry/branding



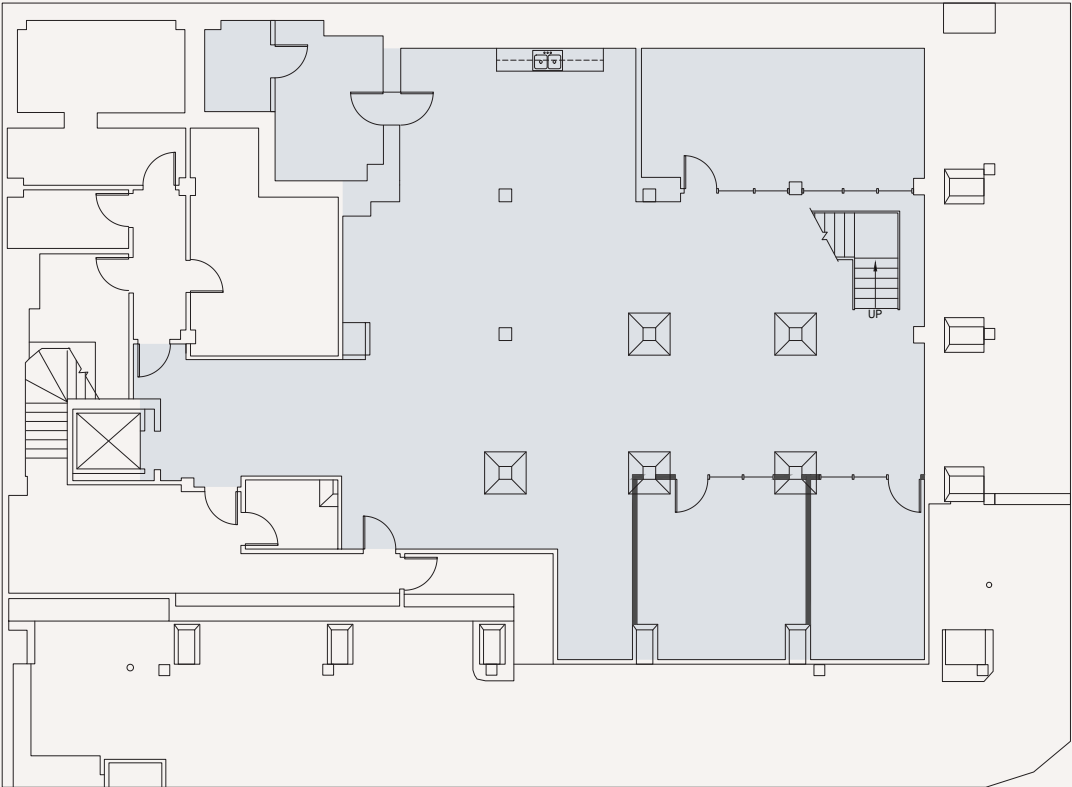
Prominent Montgomery
Street Address

FLOOR PLANS

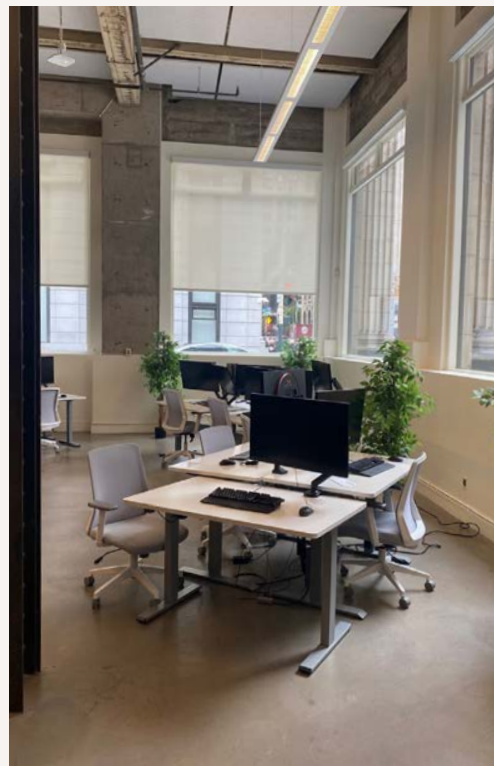
Ground Level



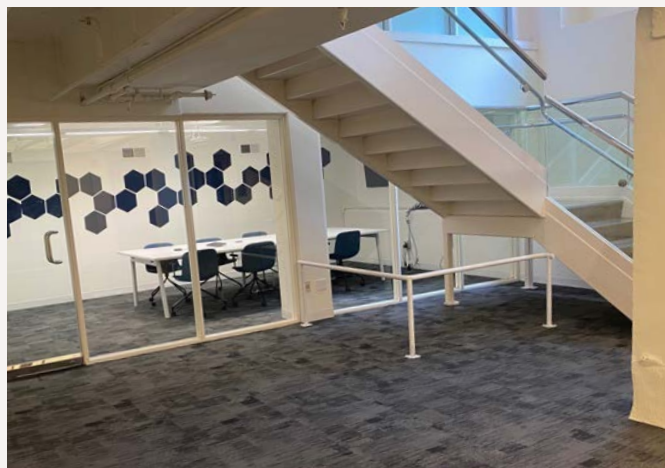
Lower Level



PROPERTY PHOTOS



PROPERTY PHOTOS



AMENITIES

Situated between 555 California Street and the Transamerica Pyramid, 500 Montgomery sits in the heart of San Francisco. This prime location is a hub for abundant amenities, convenient transit options, and prestigious Fortune 500 Companies.

10

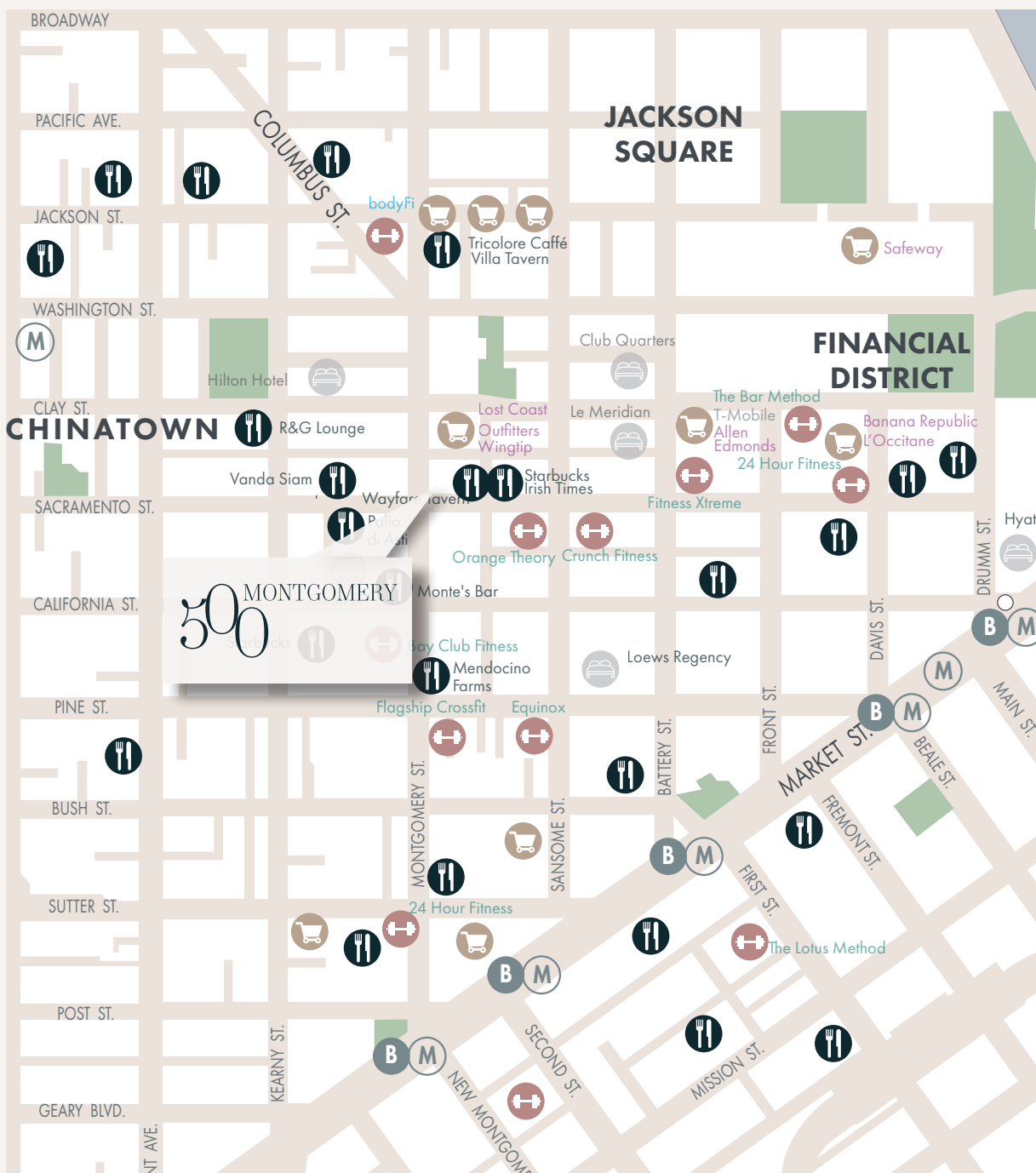
Minute walk to the Ferry Terminal







5

Minute walk to Bart, Muni and new Central Subway

100

Walk and Transit Score



-  Food
-  Hotels
-  Retail
-  Fitness
-  Muni
-  Bart

50 MONTGOMERY

SAN FRANCISCO, CA

FOR MORE INFORMATION, PLEASE CONTACT:

REZA MUSAVI

reza.musavi@cushwake.com
+1 415 244 7575
LIC #01424202

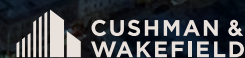
JIM SOBEL

jim.sobel@cushwake.com
+1 415 568 3437
LIC #00965752

BRENDON KANE

brendon.kane@cushwake.com
+1 415 677 0466
LIC #01884552

425 Market St, Suite 2300 | San Francisco, CA 94105 | +1 415 397 1700 | cushmanwakefield.com



©2025 Cushman & Wakefield. All rights reserved. The information contained in this communication is strictly confidential. This information has been obtained from sources believed to be reliable but has not been verified. NO WARRANTY OR REPRESENTATION, EXPRESS OR IMPLIED, IS MADE AS TO THE CONDITION OF THE PROPERTY (OR PROPERTIES) REFERENCED HEREIN OR AS TO THE ACCURACY OR COMPLETENESS OF THE INFORMATION CONTAINED HEREIN, AND SAME IS SUBMITTED SUBJECT TO ERRORS, OMISSIONS, CHANGE OF PRICE, RENTAL OR OTHER CONDITIONS; WITHDRAWAL WITHOUT NOTICE, AND TO ANY SPECIAL LISTING CONDITIONS IMPOSED BY THE PROPERTY OWNER(S). ANY PROJECTIONS, OPINIONS OR ESTIMATES ARE SUBJECT TO UNCERTAINTY AND DO NOT SIGNIFY CURRENT OR FUTURE PROPERTY PERFORMANCE.