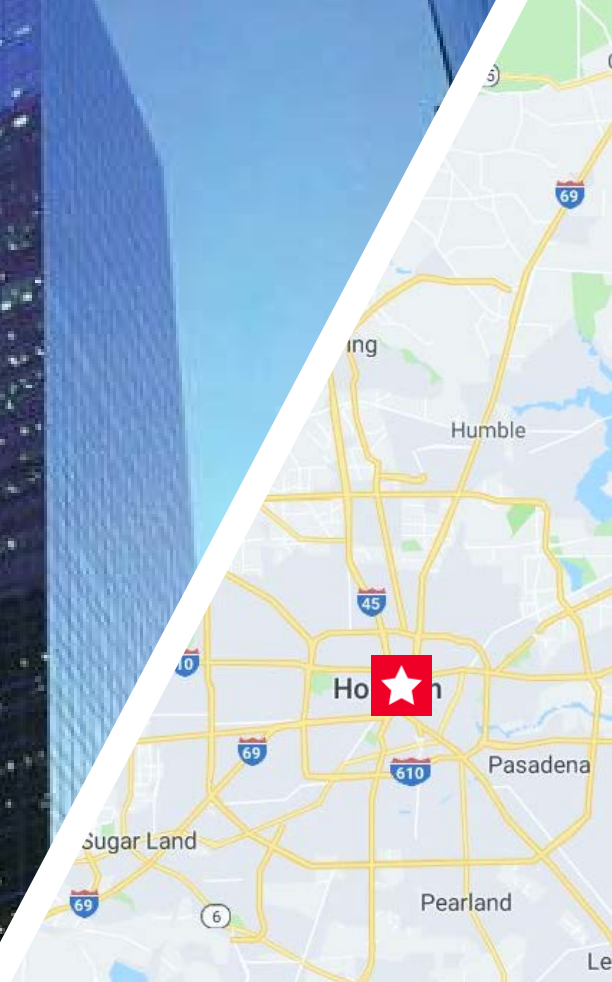




SUBLEASE AVAILABLE



TOTAL PLAZA SUBLEASE

1201 Louisiana Street

Level 29: 24,939 RSF
or

Level 30: 24,955 RSF

Level 31: 15,018 RSF

PROPERTY HIGHLIGHTS

LEED Gold Certified

Central location on the downtown tunnel system

State-of-the-art fitness facility w/ locker rooms

Brand new Bike storage room

Brand new Island Grill for on-site dining

Petroleum Club in high-rise elevator bank

Rich A. Claussen

Senior Associate

713 963 2820

rich.claussen@cushwake.com

Joe E. Peddie

Vice Chairman

713 877 8380

joe.peddie@cushwake.com

Tim D. Relyea

Executive Vice Chairman

713 877 8752

tim.relyea@cushwake.com

Cushman & Wakefield of Texas, Inc.

1330 Post Oak Boulevard, Suite 2700

Houston, TX 77056

Main 713 877 1700

cushmanwakefield.com



RECENTLY RENOVATED BUILDING LOBBY



CLASS “A” OFFICE SUBLEASE

1201 Louisiana St, Houston, 77002



SUBLEASE TERMS

Premises: 64,912 RSF (will divide)

“Net” Rental Rate: Negotiable

Availability: Immediate

Parking: 1/1000/RSF

Term: Through April 30, 2026

Furniture: Negotiable

T.I.: As-is; Where-is

Rich A. Claussen
Senior Associate
713 963 2820
rich.claussen@cushwake.com

Joe E. Peddie
Vice Chairman
713 877 8380
joe.peddie@cushwake.com

Tim D. Relyea
Executive Vice Chairman
713 877 8752
tim.relyea@cushwake.com

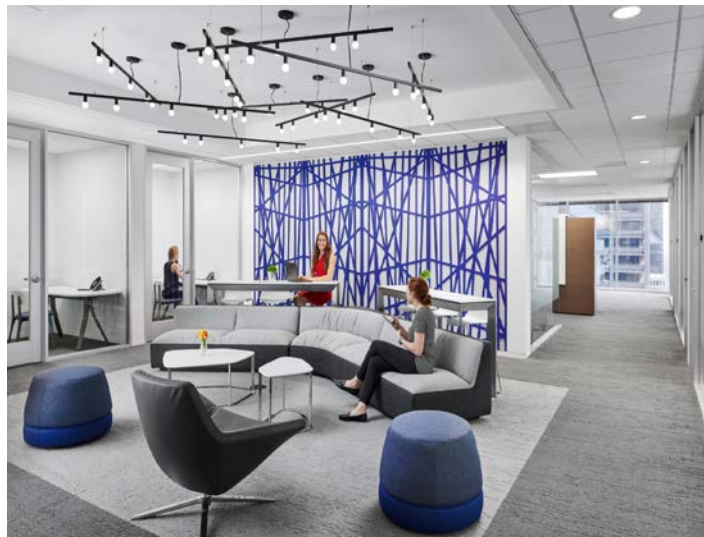
Cushman & Wakefield of Texas, Inc.
1330 Post Oak Boulevard, Suite 2700
Houston, TX 77056
Main 713 877 1700
cushmanwakefield.com

CLASS “A” OFFICE SUBLEASE

1201 Louisiana St, Houston, 77002



SELECTED PHOTOS FROM LEVEL 29



Rich A. Claussen

Senior Associate
713 963 2820
rich.claussen@cushwake.com

Joe E. Peddie

Vice Chairman
713 877 8380
joe.peddie@cushwake.com

Tim D. Relyea

Executive Vice Chairman
713 877 8752
tim.relyea@cushwake.com

Cushman & Wakefield of Texas, Inc.

1330 Post Oak Boulevard, Suite 2700
Houston, TX 77056
Main 713 877 1700
cushmanwakefield.com



CLASS “A” OFFICE SUBLEASE

1201 Louisiana St, Houston, 77002



SELECTED PHOTOS FROM LEVEL 29



Rich A. Claussen

Senior Associate

713 963 2820

rich.claussen@cushwake.com

Joe E. Peddie

Vice Chairman

713 877 8380

joe.peddie@cushwake.com

Tim D. Relyea

Executive Vice Chairman

713 877 8752

tim.relyea@cushwake.com

Cushman & Wakefield of Texas, Inc.

1330 Post Oak Boulevard, Suite 2700

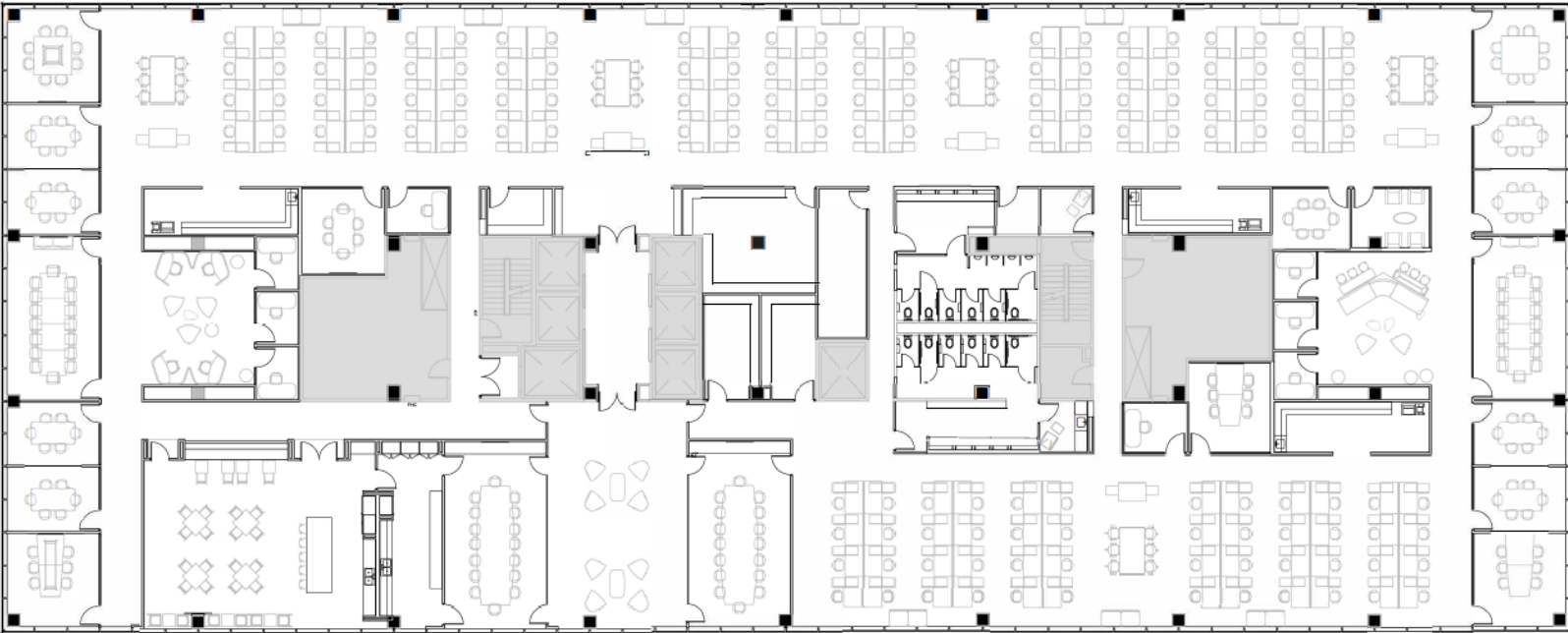
Houston, TX 77056

Main 713 877 1700

cushmanwakefield.com

CLASS “A” OFFICE SUBLEASE

1201 Louisiana St, Houston, 77002



Suite Features

- Large Open Work Area
- 136 workstations
- 8 Huddle areas
- 15 Small conference rooms
- 4 Large conference rooms
- Kitchen/Break Room

Rich A. Claussen

Senior Associate
713 963 2820
rich.claussen@cushwake.com

Joe E. Peddie

Vice Chairman
713 877 8380
joe.peddie@cushwake.com

Tim D. Relyea

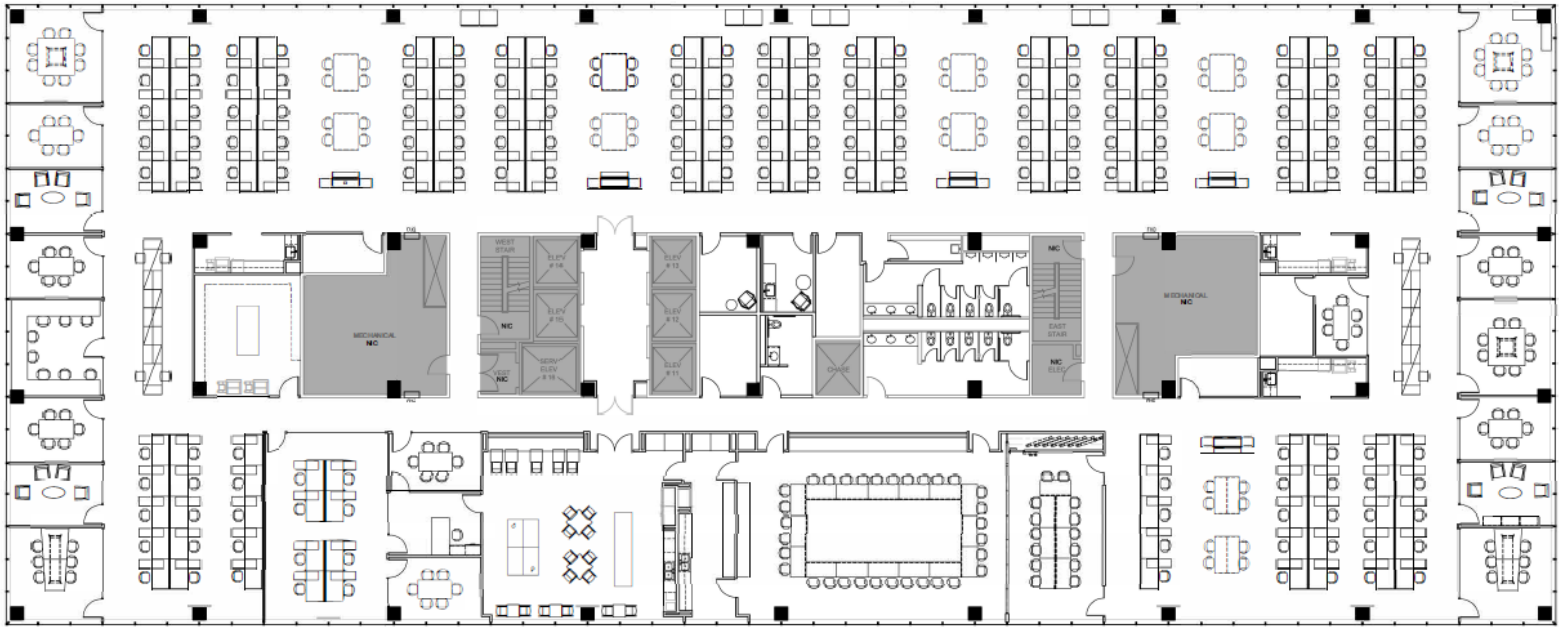
Executive Vice Chairman
713 877 8752
tim.relyea@cushwake.com

Cushman & Wakefield of Texas, Inc.

1330 Post Oak Boulevard, Suite 2700
Houston, TX 77056
Main 713 877 1700
cushmanwakefield.com

CLASS “A” OFFICE SUBLEASE

1201 Louisiana St, Houston, 77002



Suite Features

- Large Open Work Area
- 158 workstations
- 14 Huddle areas
- 14 Small conference rooms
- 2 Large conference rooms
- Large boardroom
- Kitchen/Break Room

Rich A. Claussen

Senior Associate
713 963 2820
rich.claussen@cushwake.com

Joe E. Peddie

Vice Chairman
713 877 8380
joe.peddie@cushwake.com

Tim D. Relyea

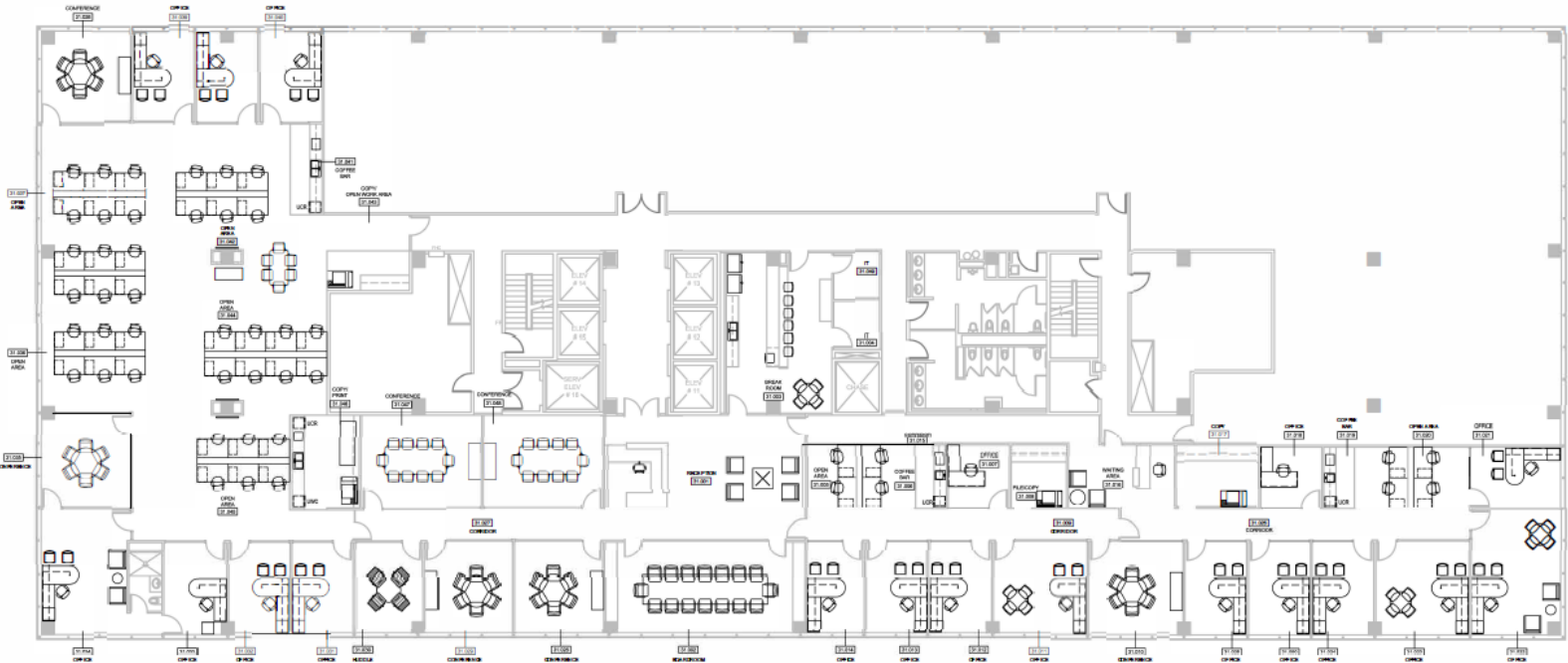
Executive Vice Chairman
713 877 8752
tim.relyea@cushwake.com

Cushman & Wakefield of Texas, Inc.

1330 Post Oak Boulevard, Suite 2700
Houston, TX 77056
Main 713 877 1700
cushmanwakefield.com

CLASS "A" OFFICE SUBLEASE

1201 Louisiana St, Houston, 77002



Suite Features

- 38 workstations
- 1 Huddle area
- 6 Small conference rooms
- 1 Large conference room
- Kitchen/Break Room
- Reception area

Rich A. Claussen

Senior Associate
713 963 2820
rich.claussen@cushwake.com

Joe E. Peddie

Vice Chairman
713 877 8380
joe.peddie@cushwake.com

Tim D. Relyea

Executive Vice Chairman
713 877 8752
tim.relyea@cushwake.com

Cushman & Wakefield of Texas, Inc.

1330 Post Oak Boulevard, Suite 2700
Houston, TX 77056
Main 713 877 1700
cushmanwakefield.com