

2163 EAST 3300 SOUTH

Salt Lake City, UT 84019

RETAIL/OFFICE SPACE IN MILLCREEK FOR LEASE



TRACY FORSLING, MBA / tracy.forsling@cushwake.com / +1 801 303 5515



©2024 Cushman & Wakefield. All rights reserved. The information contained in this communication is strictly confidential. This information has been obtained from sources believed to be reliable but has not been verified. NO WARRANTY OR REPRESENTATION, EXPRESS OR IMPLIED, IS MADE AS TO THE CONDITION OF THE PROPERTY (OR PROPERTIES) REFERENCED HEREIN OR AS TO THE ACCURACY OR COMPLETENESS OF THE INFORMATION CONTAINED HEREIN, AND SAME IS SUBMITTED SUBJECT TO ERRORS, OMISSIONS, CHANGE OF PRICE, RENTAL OR OTHER CONDITIONS, WITHDRAWAL WITHOUT NOTICE, AND TO ANY SPECIAL LISTING CONDITIONS IMPOSED BY THE PROPERTY OWNER(S). ANY PROJECTIONS, OPINIONS OR ESTIMATES ARE SUBJECT TO UNCERTAINTY AND DO NOT SIGNIFY CURRENT OR FUTURE PROPERTY PERFORMANCE.

CUSHMANWAKEFIELD.COM

2163 EAST 3300 SOUTH

Salt Lake City, UT 84019

RETAIL/OFFICE SPACE IN MILLCREEK FOR LEASE

MAIN 3,924 SF
BASEMENT 2,400 SF
TOTAL 1,100 SF - 6,364 SF

LEASE RATE

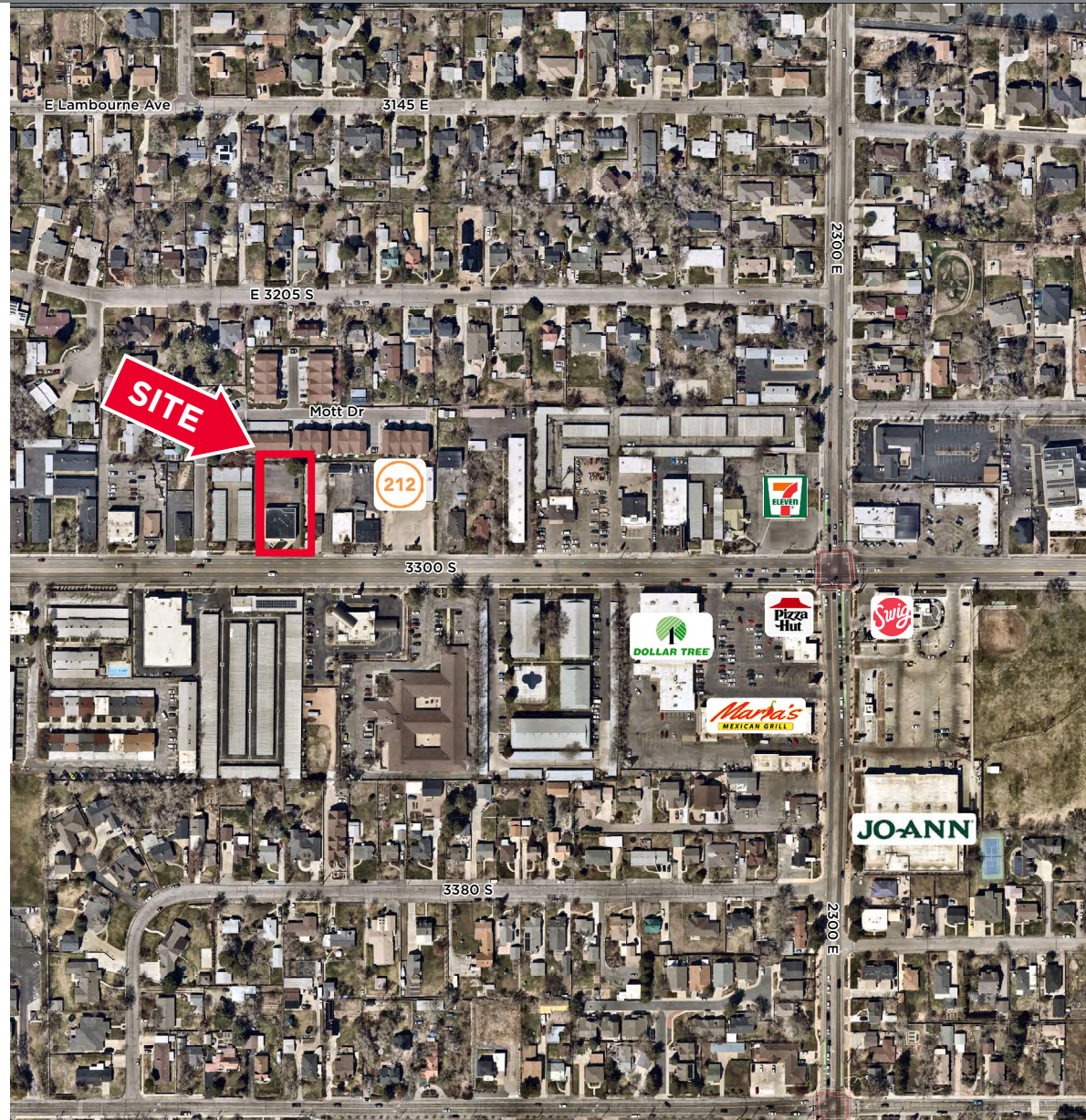
MAIN LEVEL: \$28.00 PSF/NNN

BASEMENT: \$18.00 PSF/NNN

COMMENTS

- Freestanding building with ample parking
- Situated along the bustling 3300 South corridor, this high-traffic area ensures maximum visibility and convenient access
- Surrounded by a dynamic mix of retail, dining, and professional services, this location is just minutes from I-215, providing seamless connectivity to the greater Salt Lake Valley
- With strong neighborhood demographics and a thriving business community, this is an ideal opportunity to establish or expand your presence in one of the city's most sought-after commercial hubs
- Excellent use for gym, day spa, karate studio, etc.

CUSHMANWAKEFIELD.COM

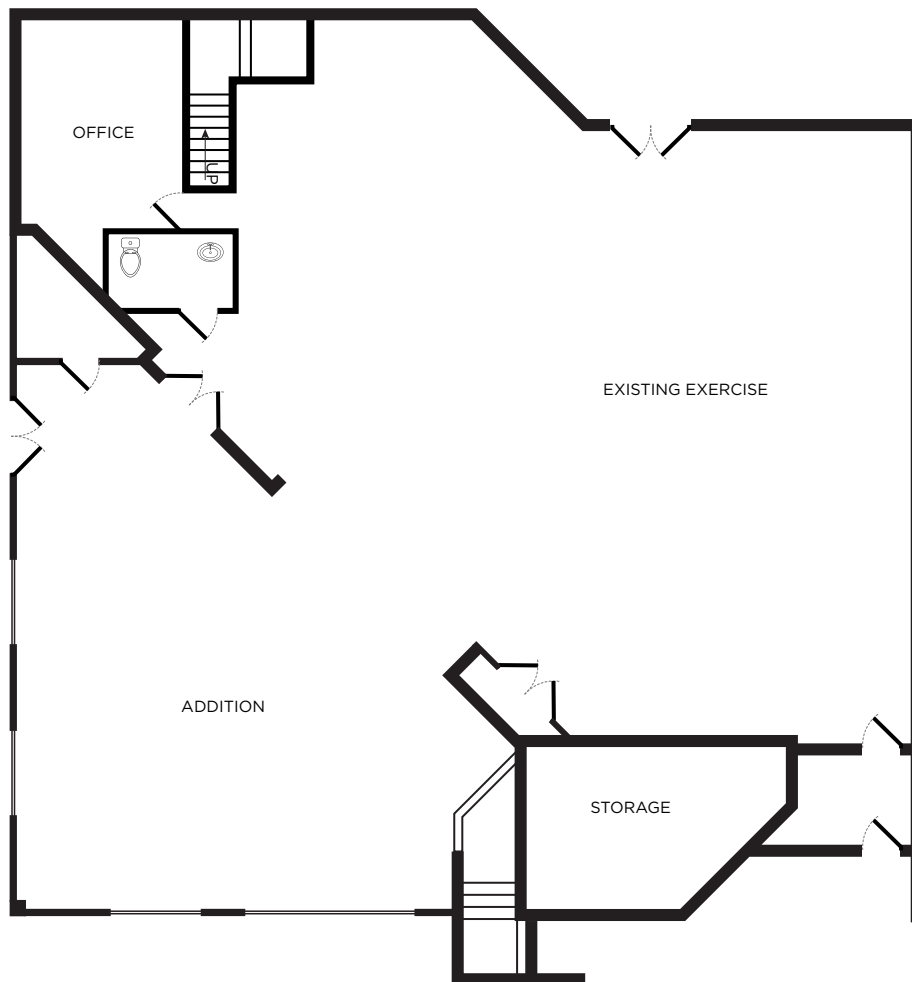


2163 EAST 3300 SOUTH

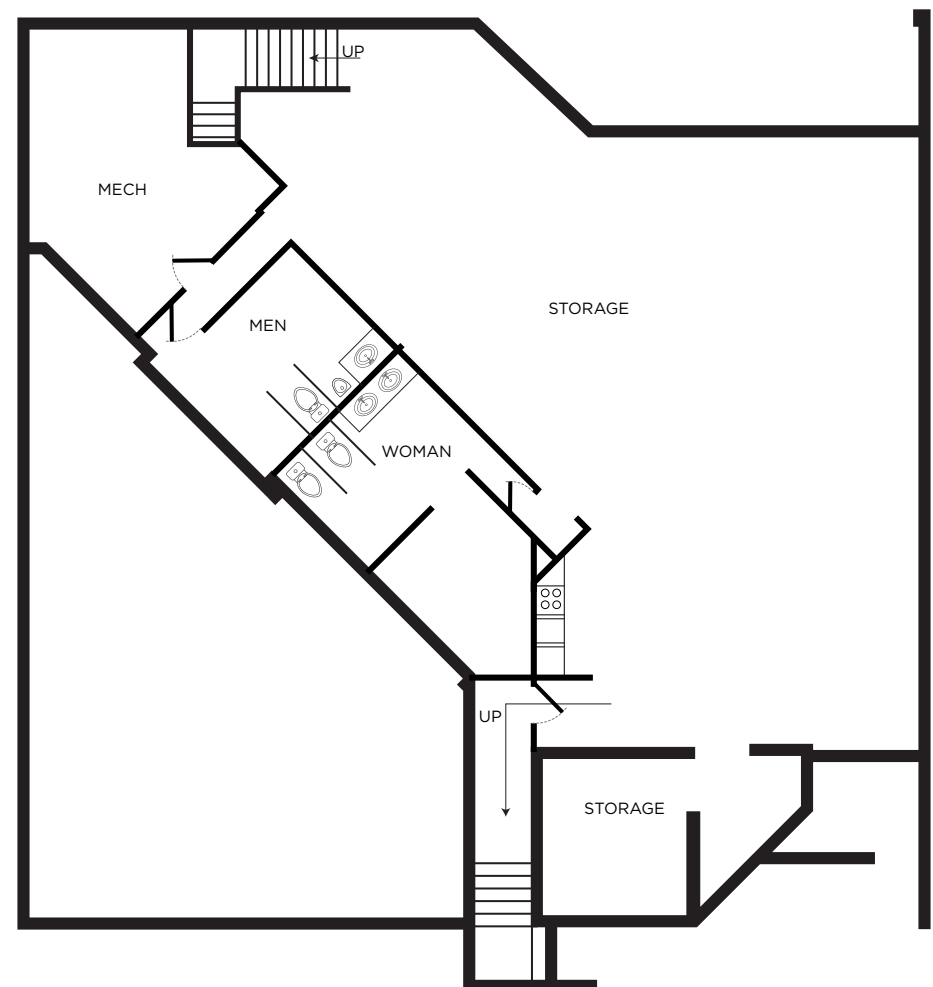
Salt Lake City, UT 84019

RETAIL/OFFICE SPACE IN MILLCREEK FOR LEASE

MAIN LEVEL FLOOR PLAN



BASEMENT FLOOR PLAN



2163 EAST 3300 SOUTH

Salt Lake City, UT 84019

RETAIL/OFFICE SPACE IN MILLCREEK FOR LEASE



NEIGHBORHOOD DEMOGRAPHICS



POPULATION



MEDIAN
HOUSEHOLD INCOME



AVERAGE
HOUSEHOLD INCOME

1 Mile	3,193	\$128,572	\$148,499
3 Miles	33,428	\$74,001	\$145,899
5 Miles	101,614	\$95,688	\$120,708

TRACY FORSLING, MBA / tracy.forsling@cushwake.com / +1 801 303 5515

