

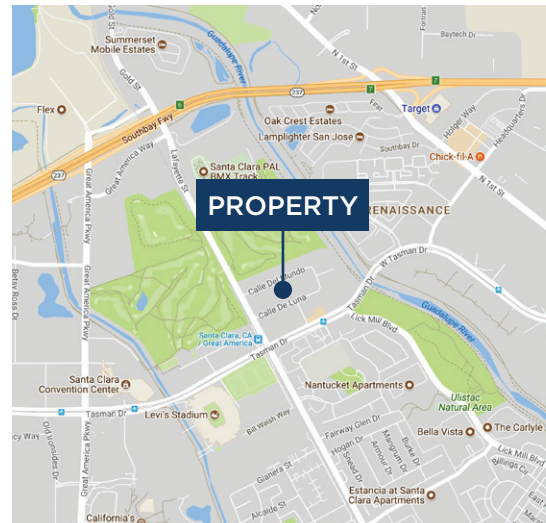
# FOR LEASE

**2301**  
**CALLE DE LUNA**  
SANTA CLARA, CA

**±8,802 SF MANUFACTURING SPACE AVAILABLE**

## HIGHLIGHTS

- Approximately 1,680 SF Office, Balance Production Space
- 2/1000 Parking Ratio
- 100% HVAC Capability
- Air Line & Power Distribution
- Fully Insulated
- 800 Amps @ 120/208 Volts, 3-Phase
- ±600 SF Bonus Mezzanine Storage
- 2 Grade Level Doors
- Call to Tour/Alarmed
- Asking \$1.75 Gross As Is



## CONTACT

**JOHN BRACKETT**  
408.309.3300  
john.brackett@cushwake.com  
LIC #00906947

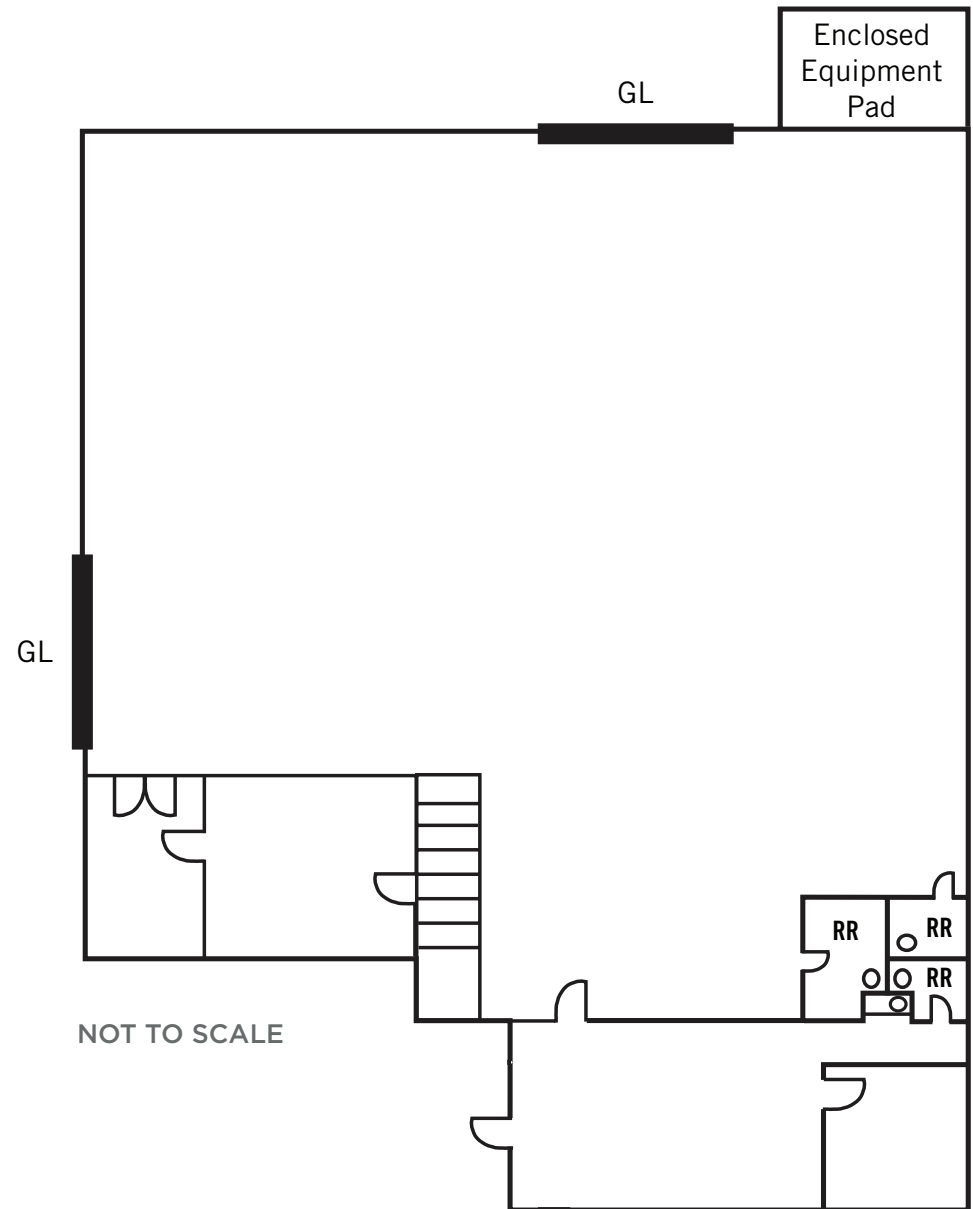


# 2301

## CALLE DE LUNA

SANTA CLARA, CA

### FLOOR PLAN



JOHN BRACKETT | 408.309.3300 | [john.brackett@cushwake.com](mailto:john.brackett@cushwake.com) | LIC #00906947

