

# 3930

## SHELBOURNE STREET VICTORIA, BC

FOR LEASE



**COLLEEN AUSTIN**

Personal Real Estate Corporation  
Commercial Sales & Leasing  
Associate Vice President  
D: +1 250 410 3003  
colleen.austin@ca.cushwake.com

**TOM ABERCROMBIE**

Associate  
D: +1 250 410 3001  
M: +1 647 621 2618  
tom.abercrombie@cushwake.com

730 View Street, Suite 340  
Victoria, British Columbia  
+1 250 410 3000  
[cushmanwakefield.ca](http://cushmanwakefield.ca)

# 3930 SHELBOURNE STREET

VICTORIA, BC



## FOR LEASE

### Opportunity

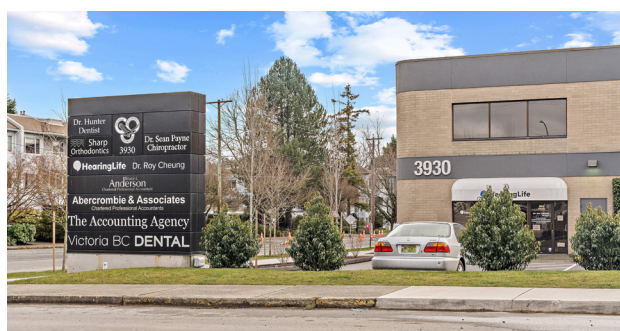
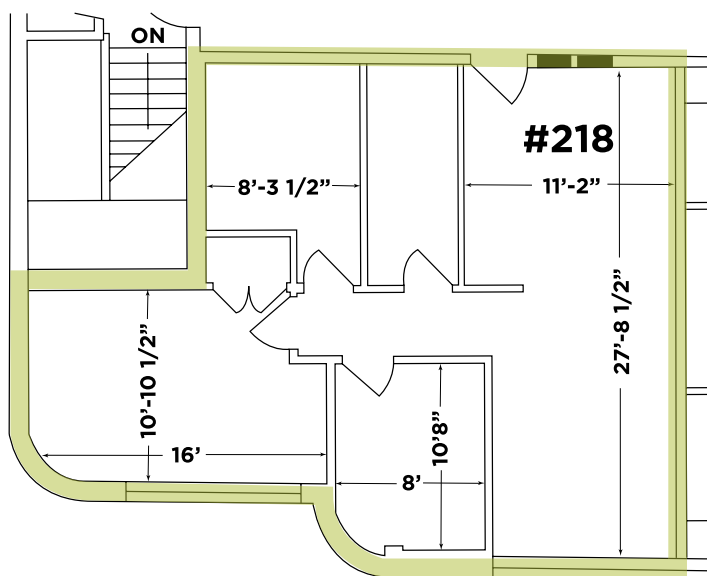
3930 Shelbourne Street is strategically located in the heart of Saanich, offering ease of access to major roads and public transportation. Developed and owned by a prestigious local developer, the building is a spectacle of the Victoria suburban office market. Vacancy in the building is a rarity.

### Office Premises:

#### Unit 218 - 965 SF

- Available March 2025
- Base Rent - \$30
- Additional Rent - \$17.42 (2024)
- Ideal for a professional services or medical user
- Ample surface parking
- Move in ready built out offices
- Kitchenette

### Floor Plan



### FOR MORE INFORMATION, PLEASE CONTACT:

#### COLLEEN AUSTIN

Personal Real Estate Corporation  
Commercial Sales & Leasing  
Associate Vice President  
D: +1 250 410 3003  
colleen.austin@ca.cushwake.com

#### TOM ABERCROMBIE

Associate  
D: +1 250 410 3001  
M: +1 647 621 2618  
tom.abercrombie@cushwake.com

730 View Street, Suite 340  
Victoria, British Columbia  
+1 250 410 3000  
cushmanwakefield.ca

©2025 Cushman & Wakefield. All rights reserved. The information contained in this communication is strictly confidential. This information has been obtained from sources believed to be reliable but has not been verified. NO WARRANTY OR REPRESENTATION, EXPRESS OR IMPLIED, IS MADE AS TO THE CONDITION OF THE PROPERTY (OR PROPERTIES) REFERENCED HEREIN OR AS TO THE ACCURACY OR COMPLETENESS OF THE INFORMATION CONTAINED HEREIN, AND SAME IS SUBMITTED SUBJECT TO ERRORS, OMISSIONS, CHANGE OF PRICE, RENTAL OR OTHER CONDITIONS, WITHDRAWAL WITHOUT NOTICE, AND TO ANY SPECIAL LISTING CONDITIONS IMPOSED BY THE PROPERTY OWNER(S). ANY PROJECTIONS, OPINIONS OR ESTIMATES ARE SUBJECT TO UNCERTAINTY AND DO NOT SIGNIFY CURRENT OR FUTURE PROPERTY PERFORMANCE.