



CUSHMAN &
WAKEFIELD

CRESCO
Real Estate



24441-24481 DETROIT ROAD
Westlake, Ohio 44145



AVAILABLE SPACES

Suite 350 2,278 SF

RENTAL RATE

\$22.00/SF

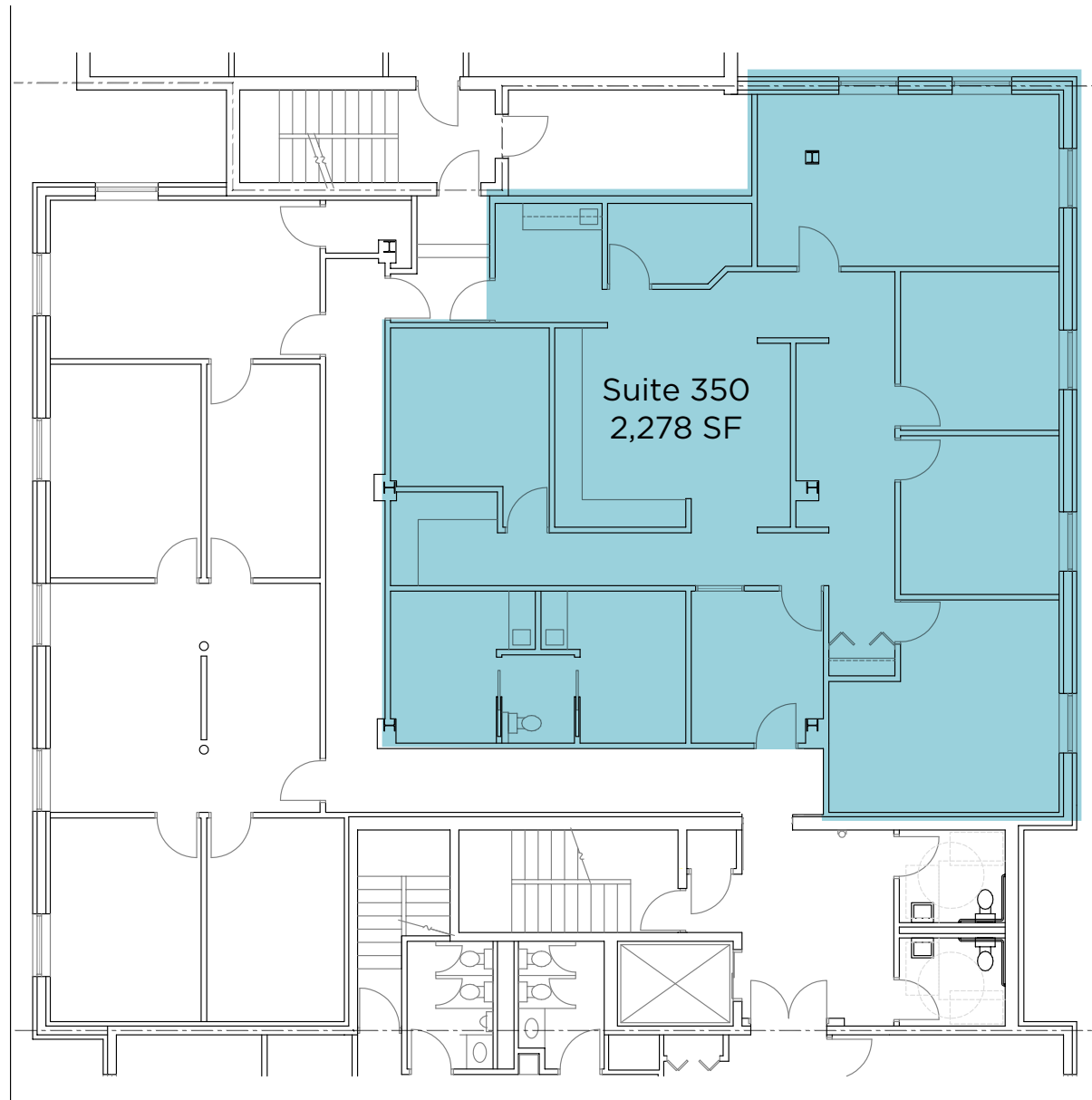
PROPERTY HIGHLIGHTS

- Full service bank branch
- Move-in ready suites with new finishes
- Ample free parking
- Excellent access to I-90
- Several nearby restaurants
- Located just minutes from Crocker Park

CONNOR REDMAN / Vice President / +1 216 525 1493 / credman@crescorealestate.com
KIRSTEN PARATORE / Senior Associate / +1 216 525 1491 / kparatore@crescorealestate.com



THIRD FLOOR



PROPERTY PHOTOS



CONNOR REDMAN / Vice President / +1 216 525 1493 / credman@crescorealestate.com
KIRSTEN PARATORE / Senior Associate / +1 216 525 1491 / kparatore@crescorealestate.com





This map was produced using data from private and government sources deemed to be reliable. The information herein is provided without representation or warranty.

©2021, SITES USA Inc., Chandler, AZ (480) 491-1112. All Rights Reserved.

Latitude: 41.63891 Longitude: -81.58683 Zoom: 13.500 m

Logos are for identification purposes only and may be trademarks of their respective companies.

CONNOR REDMAN / Vice President / +1 216 525 1493 / credman@crescorealestate.com
KIRSTEN PARATORE / Senior Associate / +1 216 525 1491 / kparatore@crescorealestate.com



**CONNOR REDMAN**

Vice President

credman@crescorealestate.com

+1 216 525 1493

KIRSTEN PARATORE

Senior Associate

kparatore@crescorealestate.com

+1 216 525 1491

6100 Rockside Woods Blvd, Suite 200

Cleveland, Ohio 44131

Main +1 216 520 1200

Fax +1 216 520 1828

crescorealestate.com*Independently Owned and Operated / A Member of the Cushman & Wakefield Alliance*

Cushman & Wakefield Copyright 2025. No warranty or representation, express or implied, is made to the accuracy or completeness of the information contained herein, and same is submitted subject to errors, omissions, change of price, rental or other conditions, withdrawal without notice, and to any special listing conditions imposed by the property owner(s). As applicable, we make no representation as to the condition of the property (or properties) in question.