



FOR SUBLEASE

HARBOURSIDE CENTRE

788 HARBOURSIDE DRIVE, NORTH VANCOUVER
FURNISHED FULL FLOOR WITH DEMISING OPTIONS
7,439 SF - 17,855 SF



VIEW VIRTUAL TOUR

////

FOR SUBLEASE HARBOURSIDE CENTRE

788 HARBOURSIDE DRIVE, NORTH VANCOUVER
FURNISHED FULL FLOOR WITH DEMISING OPTIONS
7,439 SF - 17,855 SF

BUILDING OVERVIEW

Completed in 2000, 788 Harbourside Drive is located in North Vancouver's Harbourside Business Park, offering views of Vancouver's city skyline and the North Shore mountains. The Pacific Spirit Trail connects Harbourside to the Lonsdale Quay, where the bus and SeaBus terminals are located, providing quick and convenient access to Downtown Vancouver. Bus 231 runs service to Harbourside during peak hours in the morning and afternoon, with bus stops located within half a block of the building.

FULL **2ND FLOOR**
17,855 SF

DEMISING **OPTION 1**
7,439 SF

DEMISING **OPTION 2**
10,416 SF

ASKING **RENT**
Please contact agents

ADDITIONAL **RENT**
\$19.66 PSF/PA (2025 estimate)

SUBLEASE **EXPIRY**
May 31, 2028

DEDICATED **PARKING**
30 reserved stalls total (1 stall per 595 SF)
Surface (\$85.00 per mo.)

AVAILABILITY **TIMING**
Full Premises: 30 Days' notice
Demised Premises: 90 Days' notice



BUILDING HIGHLIGHTS

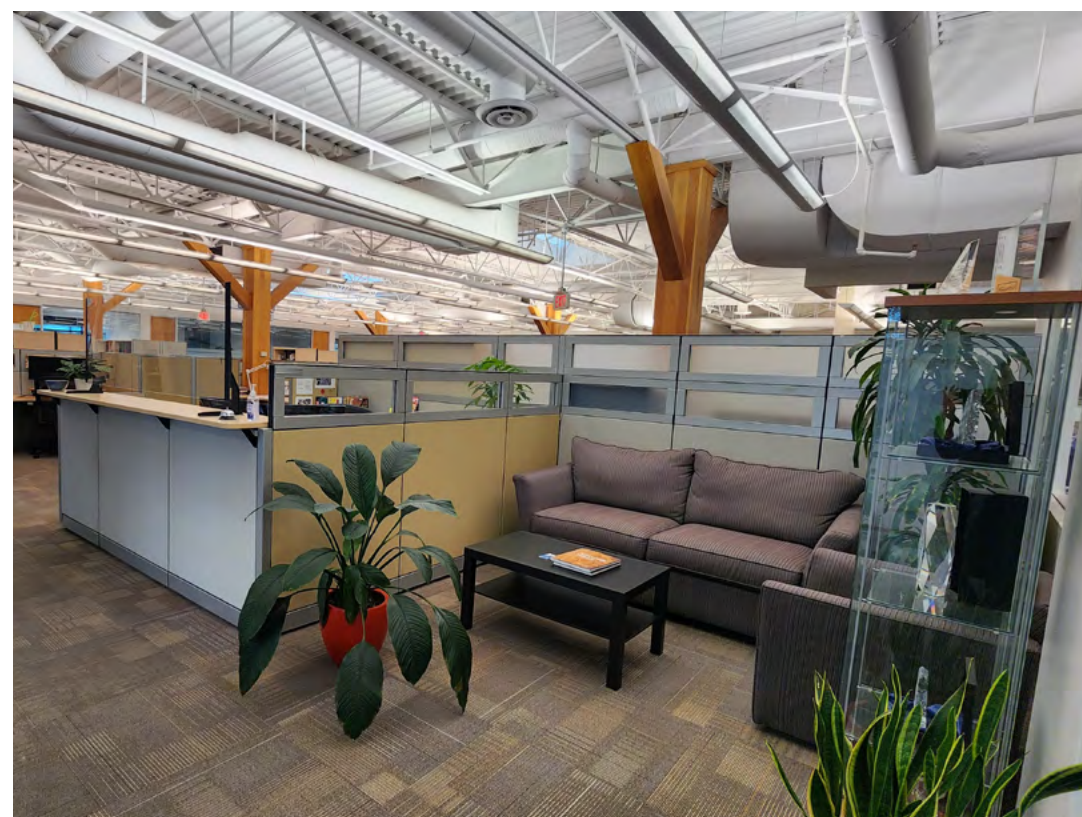
- Fully Furnished and Renovated in 2018
- Flexible Demising Options
- Outlooks to the Water
- Flooded with Natural Light (Skylights and 4 Sides of Glazing)
- Steps from the waterfront
- Class A building, professionally managed by GWL Realty Advisors Inc.

BUILDING AMENITIES

- Fitness facility
- End-of-trip facility
- Bike storage
- 3rd Party Daycare (adjacent)
- Steps from Spirit Trail
- Kings Mill Beach Park
- Walking Distance to Lonsdale Quay

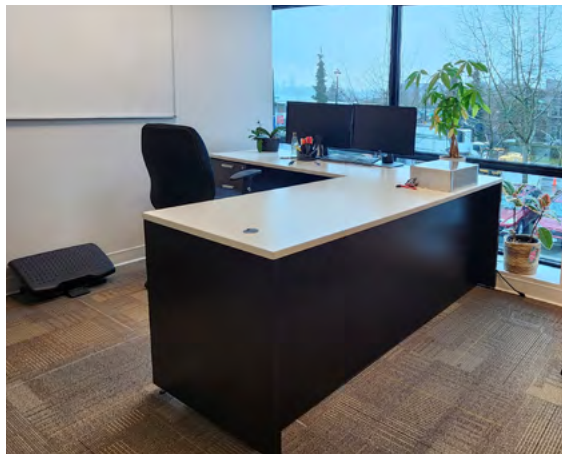
SPACE FEATURES

- High quality improvements, fully plug & play (furnished and equipped)
- Efficient layout with a balance of open plan area and offices/breakout rooms
- Very bright, good access to natural light throughout all work areas



HARBORSIDE CENTRE

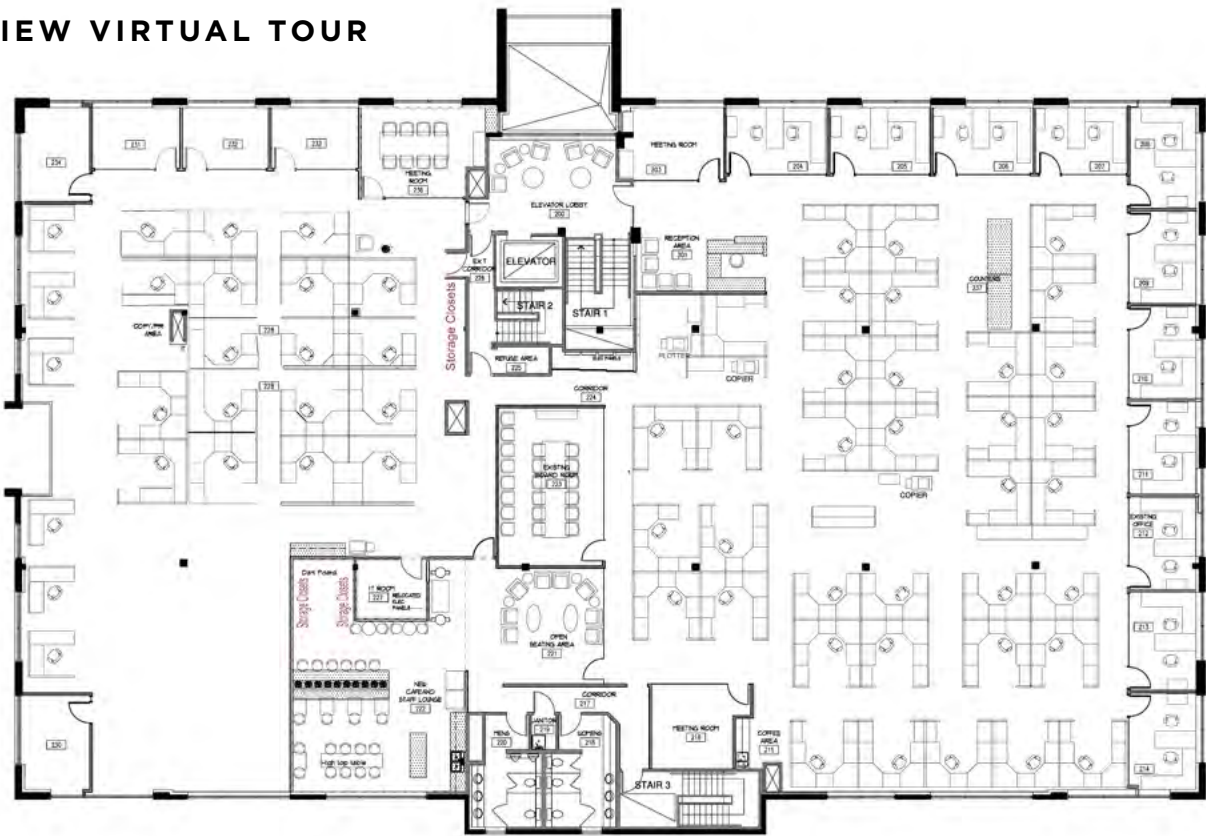
788 HARBOURSIDE DRIVE, NORTH VANCOUVER



FLOOR PLAN

17,855 SF

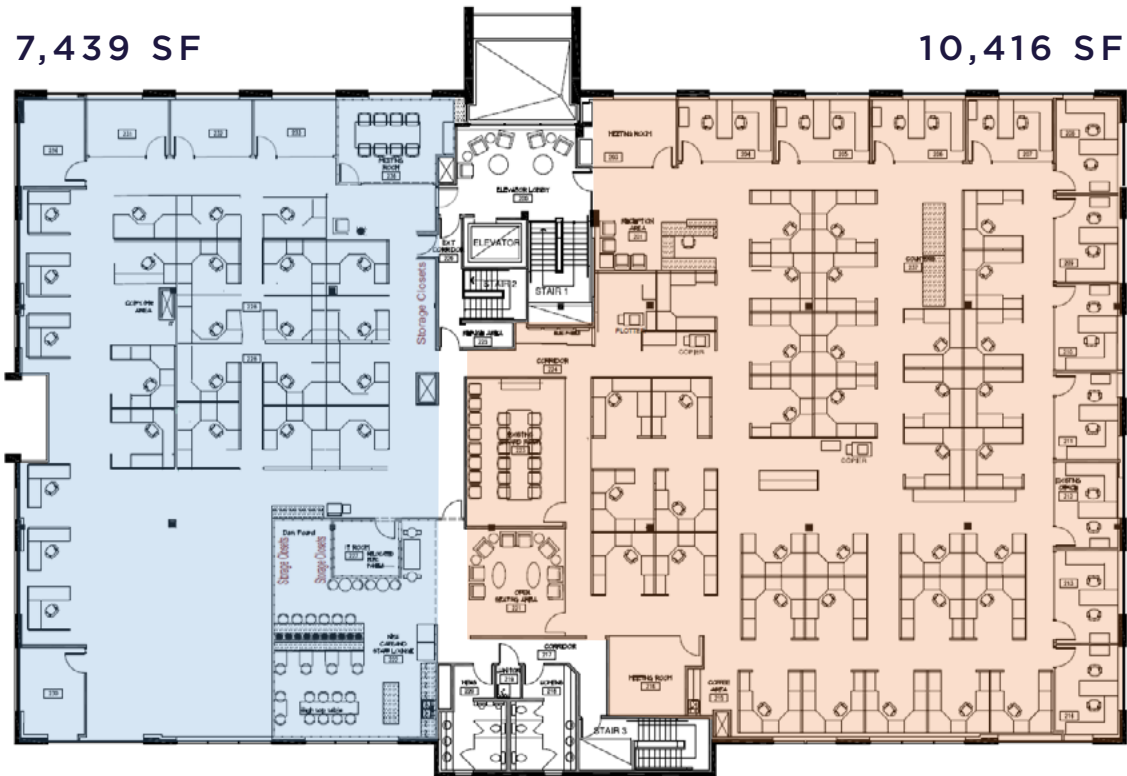
 [VIEW VIRTUAL TOUR](#)

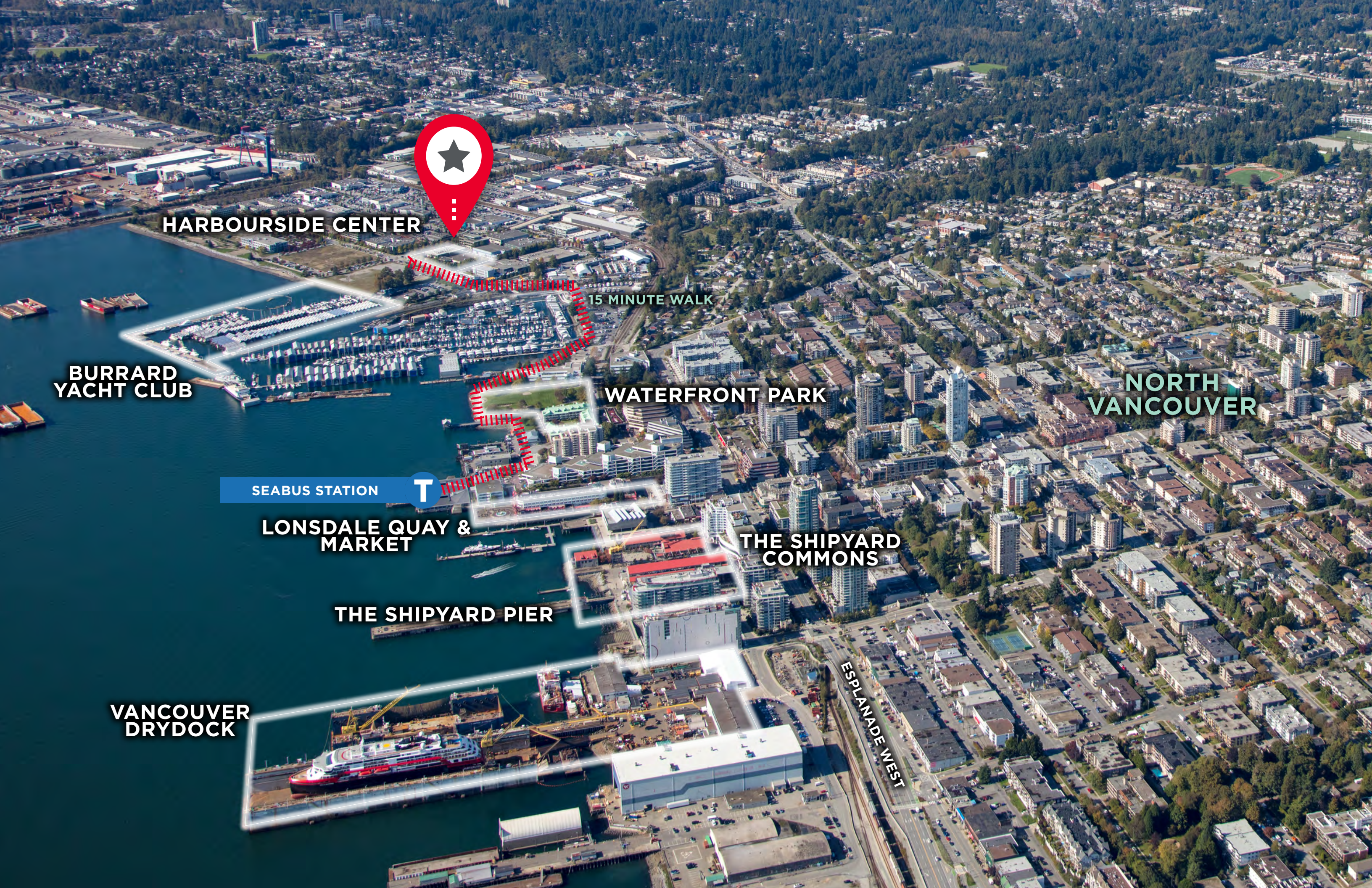


DEMISING OPTIONS

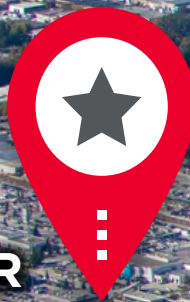
7,439 SF

10,416 SF





HARBOURSIDE CENTER



15 MINUTE WALK

**BURRARD
YACHT CLUB**

WATERFRONT PARK

**NORTH
VANCOUVER**

SEABUS STATION



**LONSDALE QUAY &
MARKET**

**THE SHIPYARD
COMMONS**

THE SHIPYARD PIER

**VANCOUVER
DRYDOCK**

ESPLANADE WEST

FOR SUBLEASE HARBOURSIDE CENTRE

FURNISHED FULL FLOOR
WITH DEMISING OPTIONS
7,439 SF - 17,855 SF



BRANDON BUZIOL
Senior Associate
Commercial Sales & Leasing
+1 604 640 5883
brandon.buziol@cushwake.com

JORDAN CORBETT
Associate Vice President
+1 604 640 5815
jordan.corbett@cushwake.com

ALEX EASTMAN
Associate, Industrial
Sales & Leasing
+1 604 608 5933
alex.eastman@cushwake.com

 **CUSHMAN &
WAKEFIELD**
700 West Georgia St, Suite 1200
Vancouver, BC
+1 604 683 3111 / cushmanwakefield.ca

©2025 Cushman & Wakefield ULC. All rights reserved. The information contained in this communication is strictly confidential. This information has been obtained from sources believed to be reliable but has not been verified. NO WARRANTY OR REPRESENTATION, EXPRESS OR IMPLIED, IS MADE AS TO THE CONDITION OF THE PROPERTY (OR PROPERTIES) REFERENCED HEREIN OR AS TO THE ACCURACY OR COMPLETENESS OF THE INFORMATION CONTAINED HEREIN, AND SAME IS SUBMITTED SUBJECT TO ERRORS, OMISSIONS, CHANGE OF PRICE, RENTAL OR OTHER CONDITIONS, WITHDRAWAL WITHOUT NOTICE, AND TO ANY SPECIAL LISTING CONDITIONS IMPOSED BY THE PROPERTY OWNER(S). ANY PROJECTIONS, OPINIONS OR ESTIMATES ARE SUBJECT TO UNCERTAINTY AND DO NOT SIGNIFY CURRENT OR FUTURE PROPERTY PERFORMANCE.