



CUSHMAN &
WAKEFIELD

SUBJECT
PROPERTY

WCR 90

85

W Main Ave

WCR 88 3/4

Bassham Ln

Lesh Dr

DOUBLE J
SIGNATURE CUTS

FOR SALE

NWC WELD COUNTY ROAD 88 ³/₄ & BASSHAM LN

Pierce, CO

SALE PRICE: \$400,000

AGRICULTURAL LAND FOR SALE

Land Size: 13.2 Acres

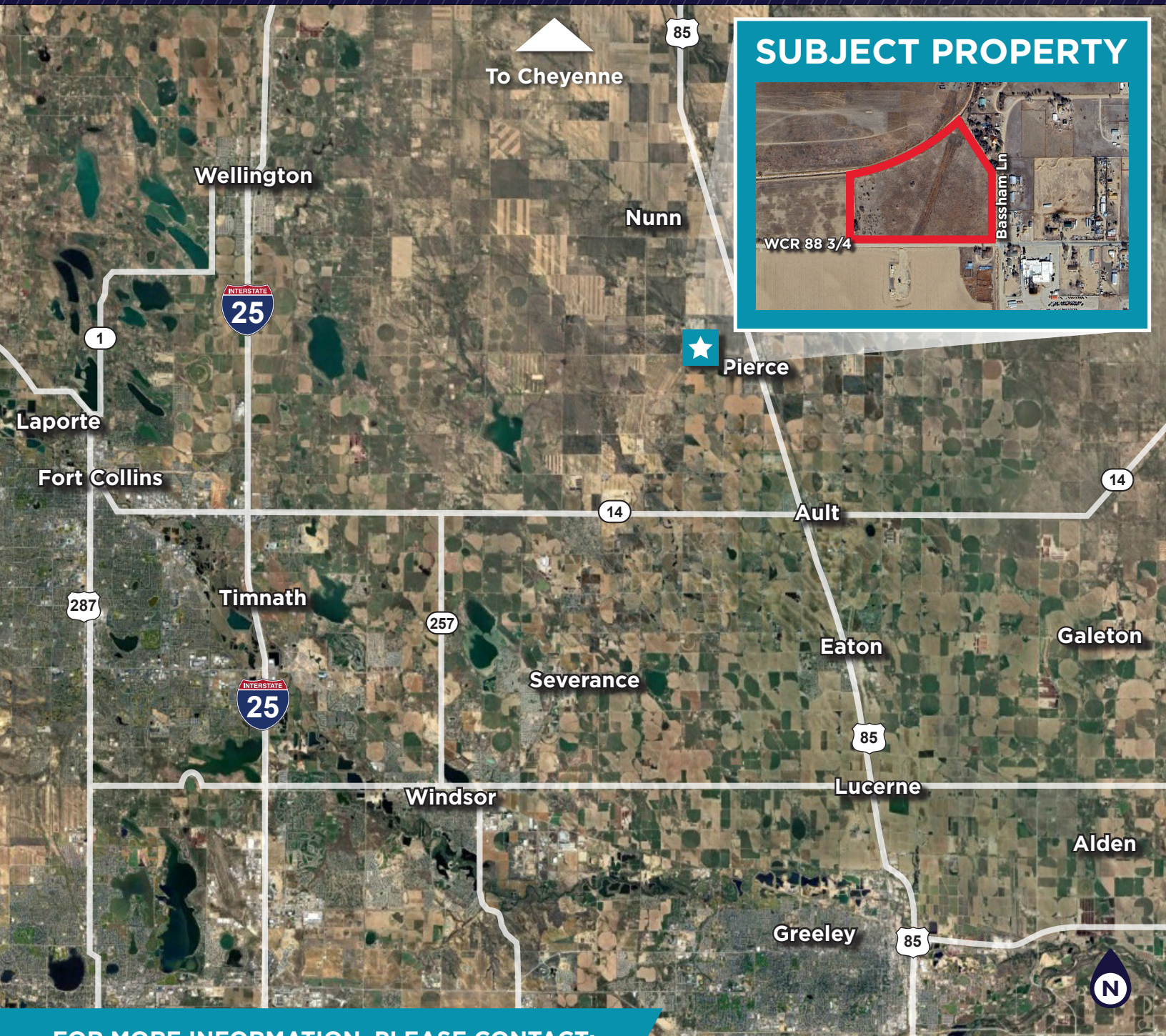
Zoning: Agricultural (Ag), Weld County
[Link to Zoning Code](#)

Utilities: Electric – Xcel Energy
Water – North Weld County
Water District

This 13.2-acre land parcel is located just outside the limits of the Town of Pierce in Weld County. Currently zoned as Agricultural, the property has potential for future commercial or industrial uses. It is ideal for oil and gas operations or other buildings requiring a storage yard. Located approximately half a mile from Highway 85, it provides convenient access to Highway 14 and north to Cheyenne. Please contact the listing broker for additional information.

NWC WELD COUNTY ROAD 88 3/4 & BASSHAM LN

Pierce, CO



FOR MORE INFORMATION, PLEASE CONTACT:

TRAVIS ACKERMAN

Executive Managing Director

+1 970 267 7720

travis.ackerman@cushwake.com

772 Whalers Way, Suite 200

Fort Collins, Colorado 80525

T +1 970 776 3900

F +1 970 267 7419

cushmanwakefield.com

