

POMERADO

PROFESSIONAL PLAZA

15706 + 15708 POMERADO ROAD
POWAY, CA 92064

Premier Medical Office Space for Lease

MOVE-IN READY SPEC SUITES AVAILABLE



CUSHMAN &
WAKEFIELD

Building owned and managed by
HEALTHCARE REALTY

NEHAL WADHWA
+1 858 625 5228
CA LIC. #01859922
nehal.wadhwa@cushwake.com

MATTHEW MELENDRES
+1 619 732 6026
CA LIC. #02162349
matthew.melendres@cushwake.com

Opportunity

- Medical office building
- Moving allowance of \$3.00/SF for new leases 36+ months
- Building-wide renovation completed February 2022
- Across the street from Palomar Medical Center Poway
- Flexible utilities
 - Only pay for the electricity used and janitorial needed
- Monument signage available on Pomerado Road



Building owned and managed by
HEALTHCARE REALTY

NEHAL WADHWA
+1 858 625 5228
CA LIC. #01859922
nehal.wadhwa@cushwake.com

MATTHEW MELENDRES
+1 619 732 6026
CA LIC. #02162349
matthew.melendres@cushwake.com

Key Demographics



**POPULATION WITHIN
3 MILES**

90,683

**AVERAGE HOUSEHOLD
INCOME WITHIN 3 MILES**

\$183,543

**MEDIAN AGE
WITHIN 3 MILES**

44

Source: ESRI

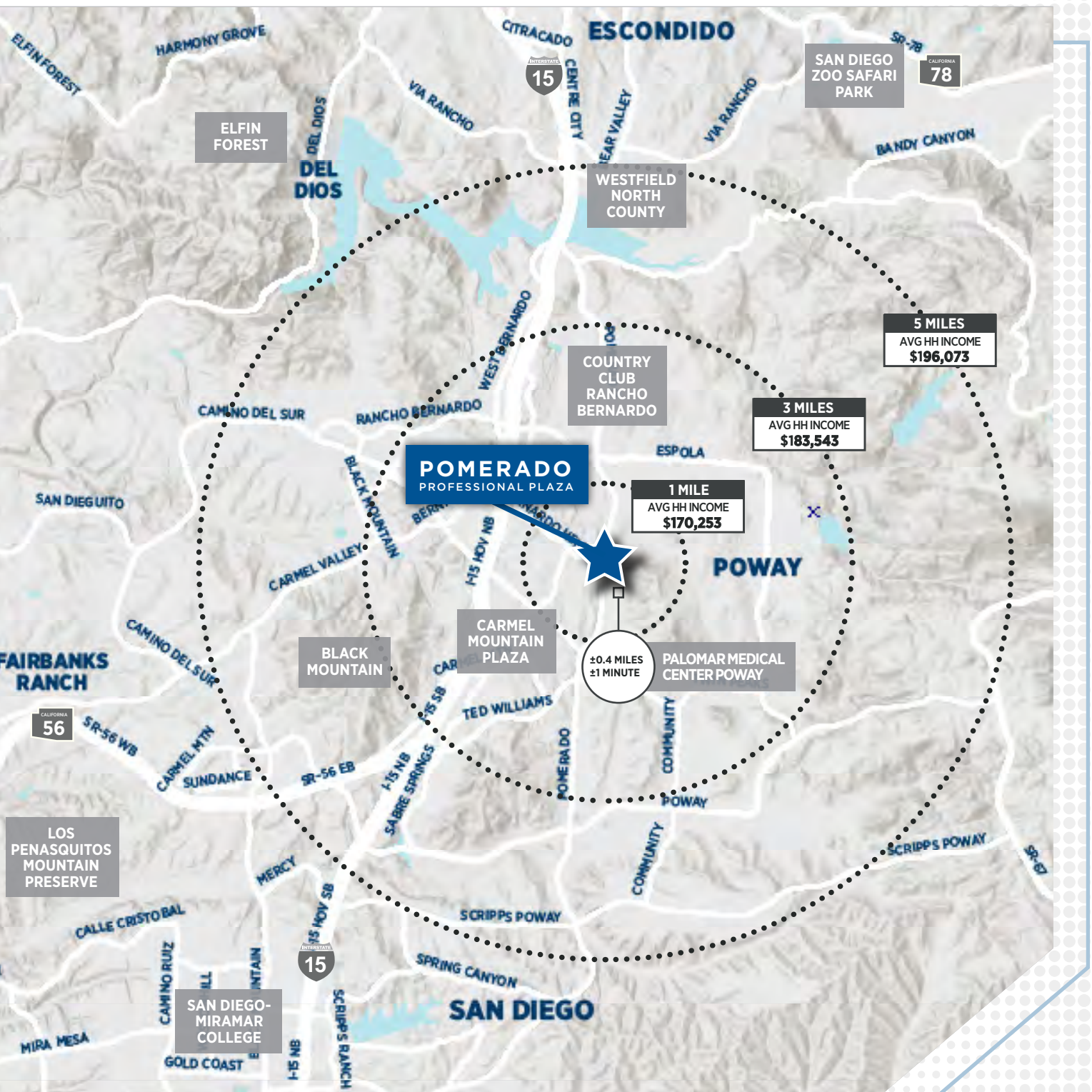


Building owned and managed by
HEALTHCARE REALTY

NEHAL WADHWA
+1 858 625 5228
CA LIC. #01859922
nehal.wadhwa@cushwake.com

MATTHEW MELENDRES
+1 619 732 6026
CA LIC. #02162349
matthew.melendres@cushwake.com

Nearby Medical



**CUSHMAN &
WAKEFIELD**

Building owned and managed by
HEALTHCARE REALTY

NEHAL WADHWA
+1 858 625 5228
CA LIC. #01859922
nehal.wadhwa@cushwake.com

MATTHEW MELENDRES
+1 619 732 6026
CA LIC. #02162349
matthew.melendres@cushwake.com

Patient Demand Forecast

SERVICE LINE	2024 VOLUME	2029 VOLUME	2034 VOLUME	5 YR GROWTH	10 YR GROWTH
Psychiatry	19,518	21,943	22,329	12.4%	14.4%
Physical Therapy/ Rehabilitation	38,118	42,304	45,587	11.0%	19.6%
Cardiology	15,544	16,584	17,483	6.7%	12.5%
Vascular	2,658	2,821	2,944	6.2%	10.8%
Miscellaneous Services	31,228	33,128	34,477	6.1%	10.4%
ENT	4,832	5,124	5,379	6.0%	11.3%
Ophthalmology	14,291	15,012	15,418	5.0%	7.9%
Lab	67,054	70,117	72,150	4.6%	7.6%
Podiatry	2,674	2,791	2,892	4.4%	8.2%
Pain Management	1,782	1,857	1,889	4.2%	6.0%
Orthopedics	4,673	4,853	5,095	3.8%	9.0%
Oncology	2,401	2,460	2,508	2.4%	4.4%
Neurology	2,497	2,556	2,590	2.4%	3.7%
Evaluation and Management	159,087	162,321	159,334	2.0%	0.2%
Trauma	1,163	1,181	1,191	1.6%	2.4%
Nephrology	833	845	841	1.4%	1.0%
Radiology	44,593	44,957	45,050	0.8%	1.0%



Market Scenario Planner displays the types of services patients in your market are expected to use and allows projections to be customized according to five key growth drivers; disease prevalence, care management, insurance, readmissions and technology shifts. The above data is representative of zip codes within a 5 mile radius of Pomerado Professional Plaza.



Building owned and managed by
HEALTHCARE REALTY

NEHAL WADHWA
+1 858 625 5228
CA LIC. #01859922
nehal.wadhwa@cushwake.com

MATTHEW MELENDRES
+1 619 732 6026
CA LIC. #02162349
matthew.melendres@cushwake.com



Building owned and managed by
HEALTHCARE REALTY

NEHAL WADHWA
+1 858 625 5228
CA LIC. #01859922
nehal.wadhwa@cushwake.com

MATTHEW MELENDRES
+1 619 732 6026
CA LIC. #02162349
matthew.melendres@cushwake.com

Availabilities

Moving allowance of \$3.00/SF for new leases 36+ months

SUITE	SIZE	CONTIGUOUS	COMMENTS
N102	2,790 SF	---	Existing medical improvements. Five (5) exams, two (2) offices, two (2) ADA bathrooms, and a records room. Perfect for a mid-sized clinic.
N107	1,085 SF	---	Move-in ready spec suite. Two (2) exam rooms, one (1) office, one (1) procedure room, waiting room and reception.
N205-209	3,677 SF	3,677 SF	Existing medical improvements with partial wing availability and signage.
N205	1,365 SF	3,677 SF	Existing medical improvements. Four (4) exam rooms, three (3) offices, in-suite restroom and reception.
N207	1,057 SF	3,677 SF	Existing medical improvements. Six (6) offices.
N209	1,255 SF	3,677 SF	Existing medical improvements. Seven (7) offices.
S110	2,277 SF	---	Move-in ready spec suite Three (3) exam rooms w/sinks, one (1) large procedure room, two (2) offices, two (2) ADA in-suite restrooms, large classroom, lab room, lounge, waiting room, and reception with sizable administrative office space. This suite would be perfect for any community focused practice that also holds events or educational seminars.
S209	1,185 SF	---	Existing office improvements. Easily converted into three (3) exams, two (2) offices, and a small waiting room. Great option for an individual practitioner with smaller space needs.
S210	2,430 SF	---	Existing medical improvements. Seven (7) offices, large reception area. Great set-up for ingress-egress of patients in a high traffic practice.



Building owned and managed by
HEALTHCARE REALTY

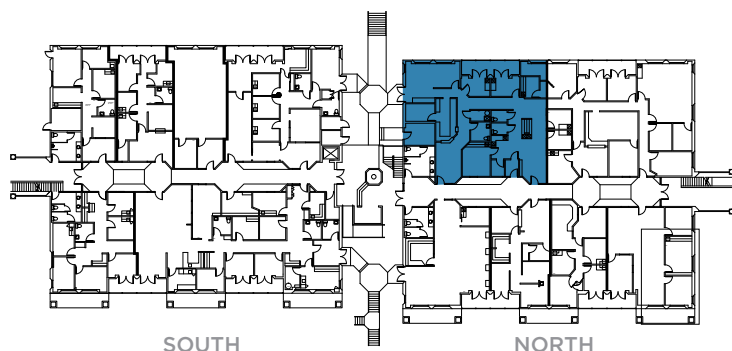
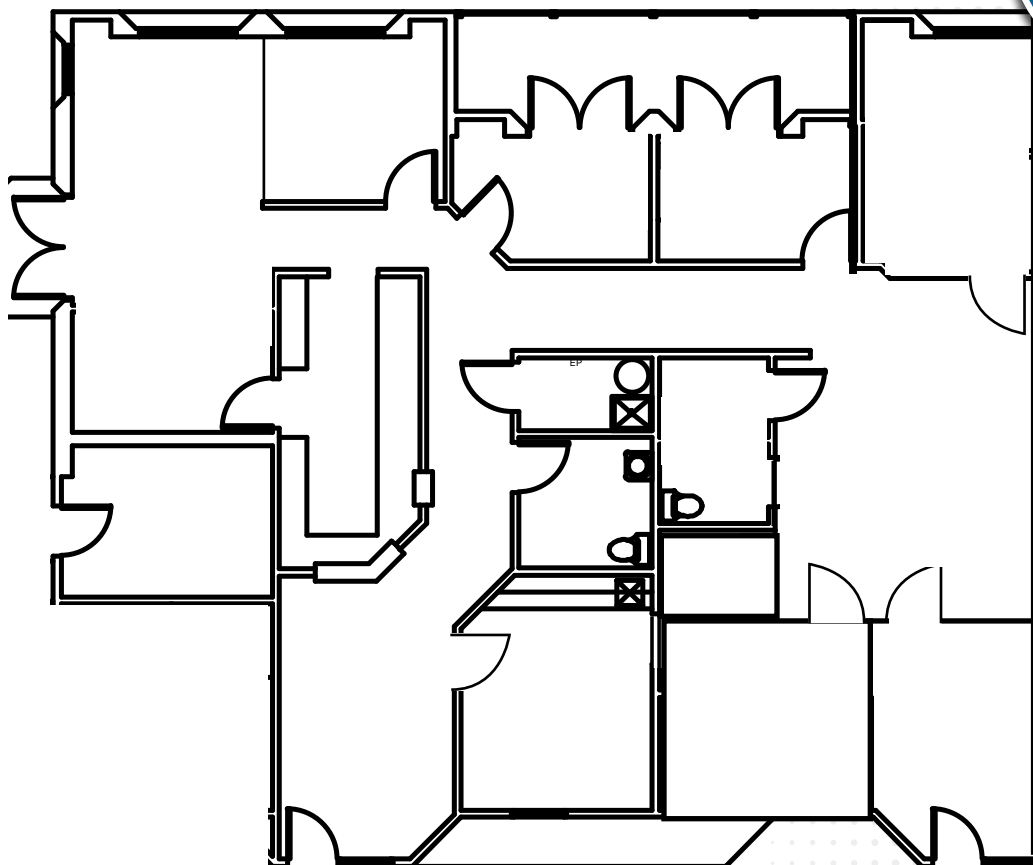
NEHAL WADHWA
+1 858 625 5228
CA LIC. #01859922
nehal.wadhwa@cushwake.com

MATTHEW MELENDRES
+1 619 732 6026
CA LIC. #02162349
matthew.melendres@cushwake.com

SUITE N102

2,790 SF

15708 POMERADO ROAD
POWAY, CA 92064



SOUTH

NORTH



Building owned and managed by
HEALTHCARE REALTY

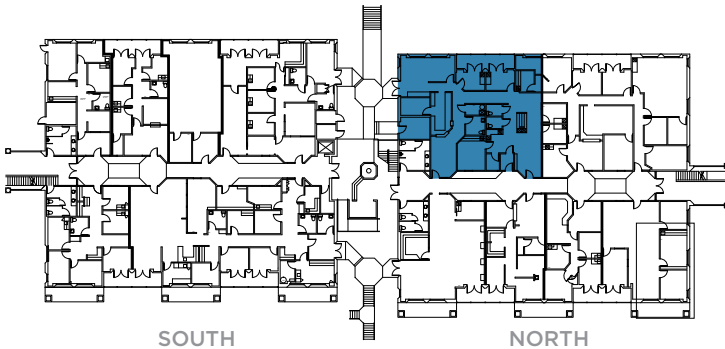
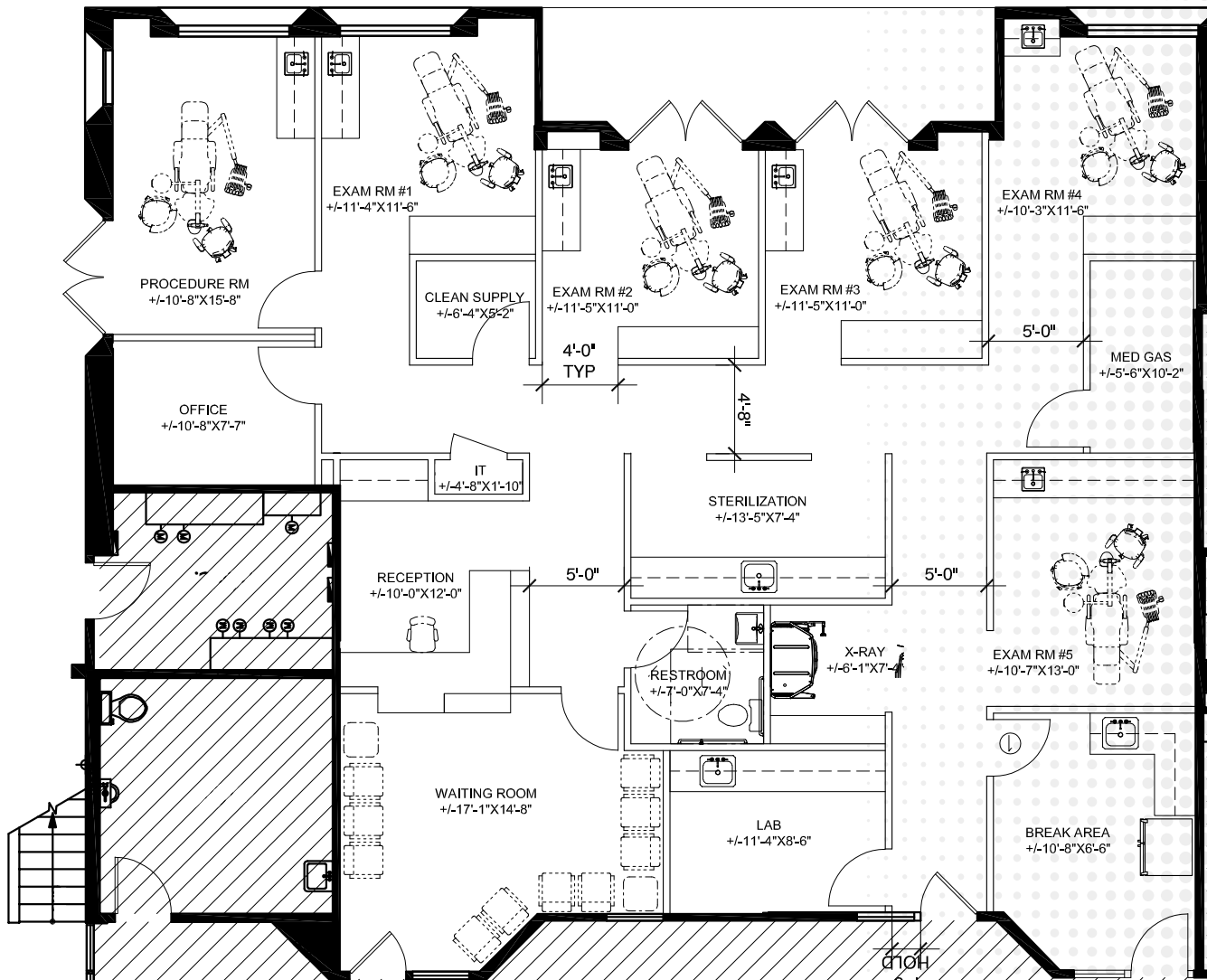
NEHAL WADHWA
+1 858 625 5228
CA LIC. #01859922
nehal.wadhwa@cushwake.com

MATTHEW MELENDRES
+1 619 732 6026
CA LIC. #02162349
matthew.melendres@cushwake.com

SUITE N102

CONCEPT DENTAL FLOOR PLAN

15708 POMERADO ROAD
POWAY, CA 92064



Building owned and managed by
HEALTHCARE REALTY

NEHAL WADHWA
+1 858 625 5228
CA LIC. #01859922
nehal.wadhwa@cushwake.com

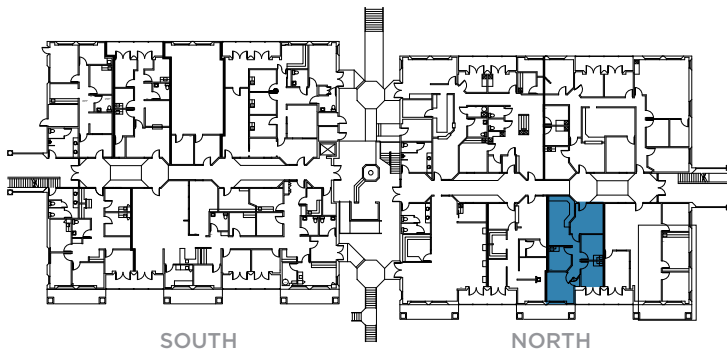
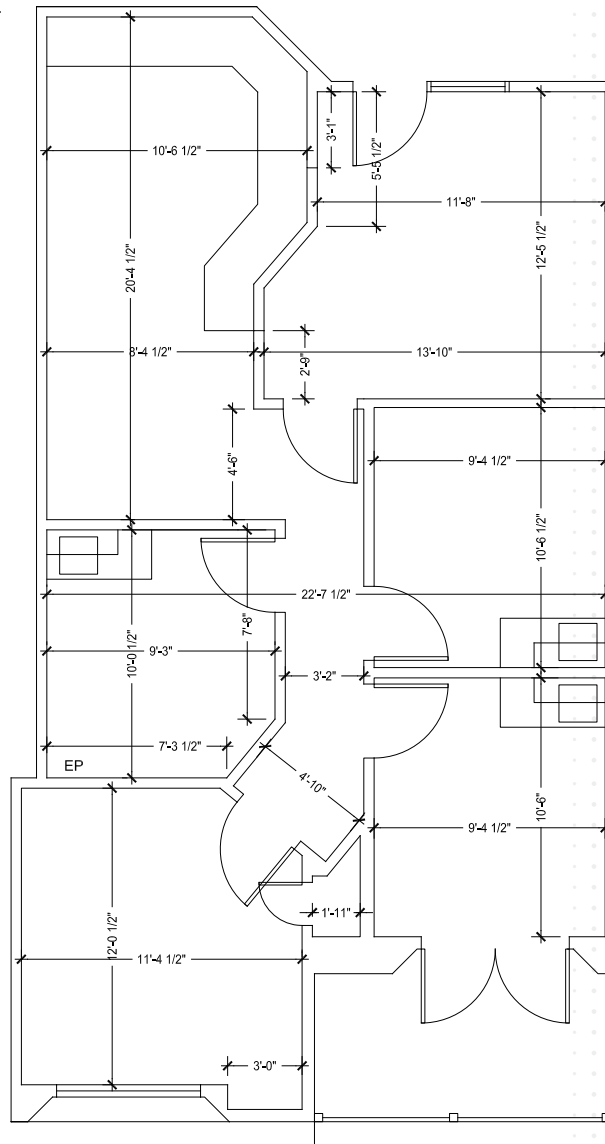
MATTHEW MELENDRES
+1 619 732 6026
CA LIC. #02162349
matthew.melendres@cushwake.com

SUITE N107

1,085 SF

MOVE-IN READY SPEC SUITE

15708 POMERADO ROAD
POWAY, CA 92064



Building owned and managed by
HEALTHCARE REALTY

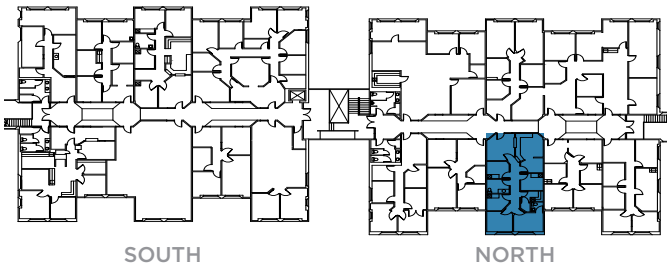
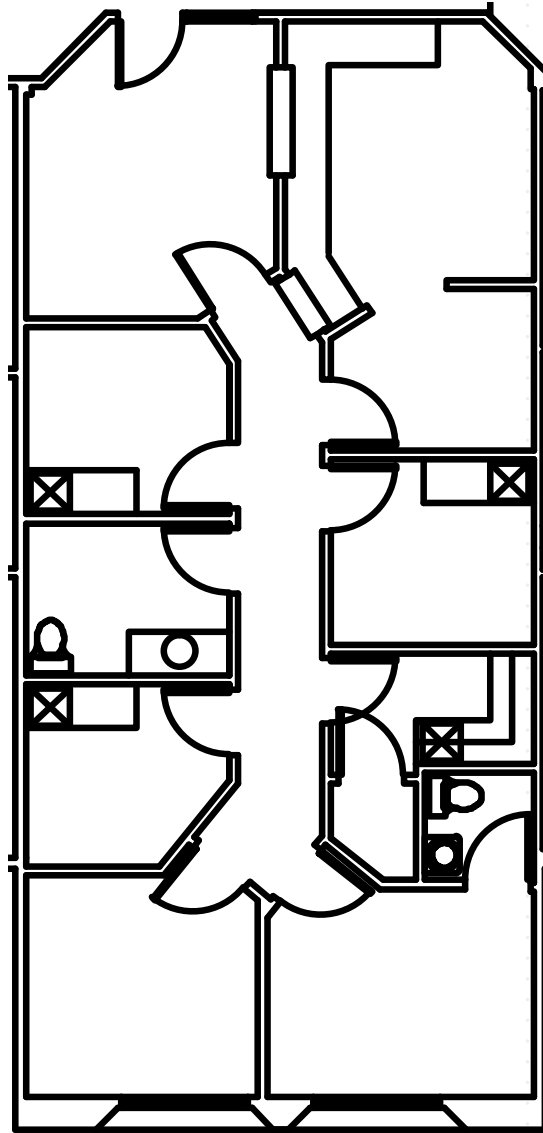
NEHAL WADHWA
+1 858 625 5228
CA LIC. #01859922
nehal.wadhwa@cushwake.com

MATTHEW MELENDRES
+1 619 732 6026
CA LIC. #02162349
matthew.melendres@cushwake.com

SUITE N205

1,365 SF UP TO 3,677 SF

15708 POMERADO ROAD
POWAY, CA 92064



Building owned and managed by
HEALTHCARE REALTY

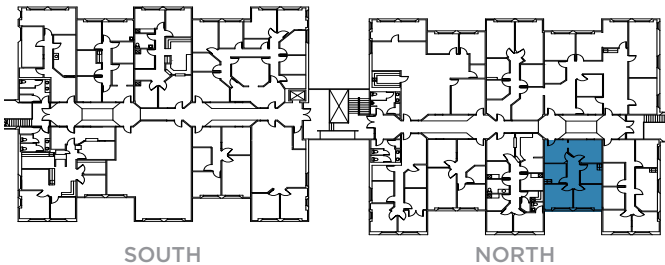
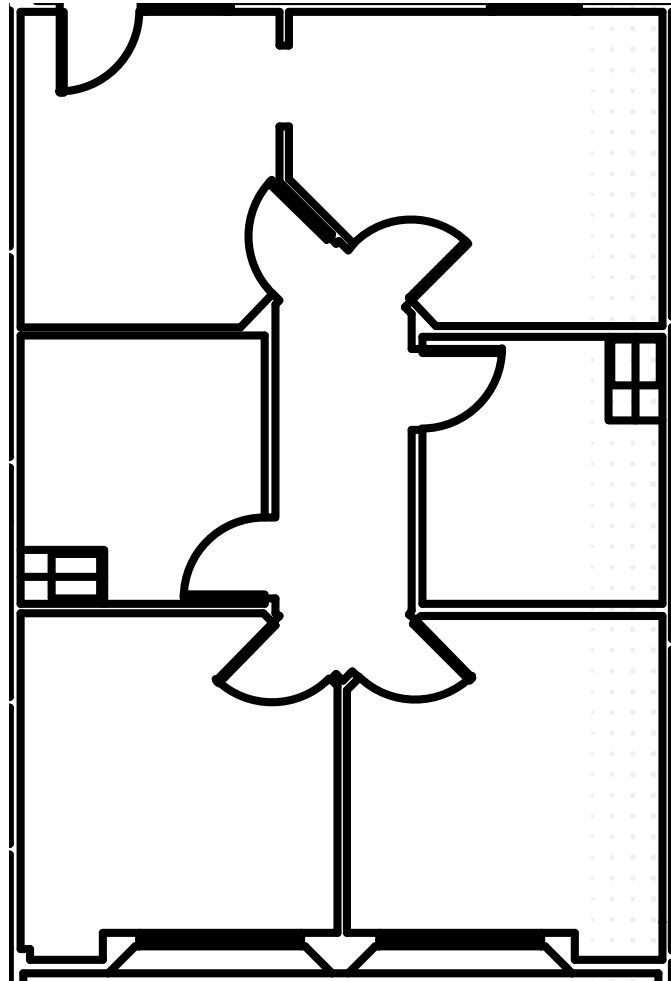
NEHAL WADHWA
+1 858 625 5228
CA LIC. #01859922
nehal.wadhwa@cushwake.com

MATTHEW MELENDRES
+1 619 732 6026
CA LIC. #02162349
matthew.melendres@cushwake.com

SUITE N207

1,057 SF UP TO 3,677 SF

15708 POMERADO ROAD
POWAY, CA 92064



Building owned and managed by
HEALTHCARE REALTY

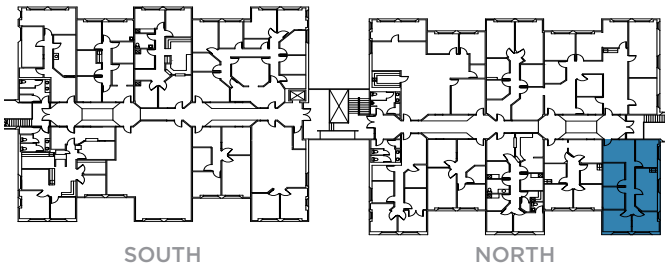
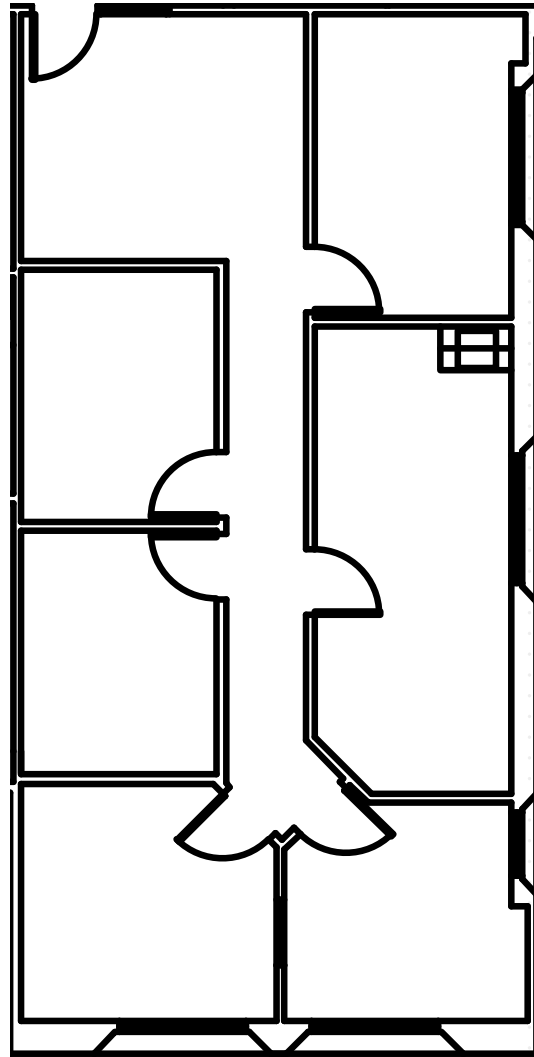
NEHAL WADHWA
+1 858 625 5228
CA LIC. #01859922
nehal.wadhwa@cushwake.com

MATTHEW MELENDRES
+1 619 732 6026
CA LIC. #02162349
matthew.melendres@cushwake.com

SUITE N209

1,255 SF UP TO 3,677 SF

15708 POMERADO ROAD
POWAY, CA 92064



Building owned and managed by
HEALTHCARE REALTY

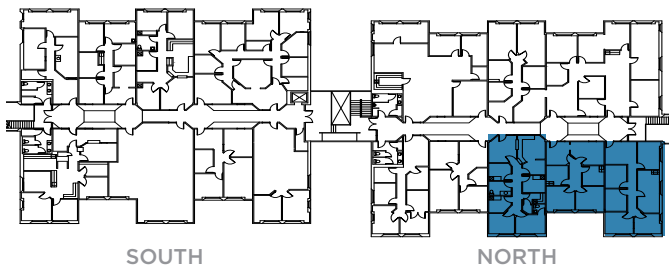
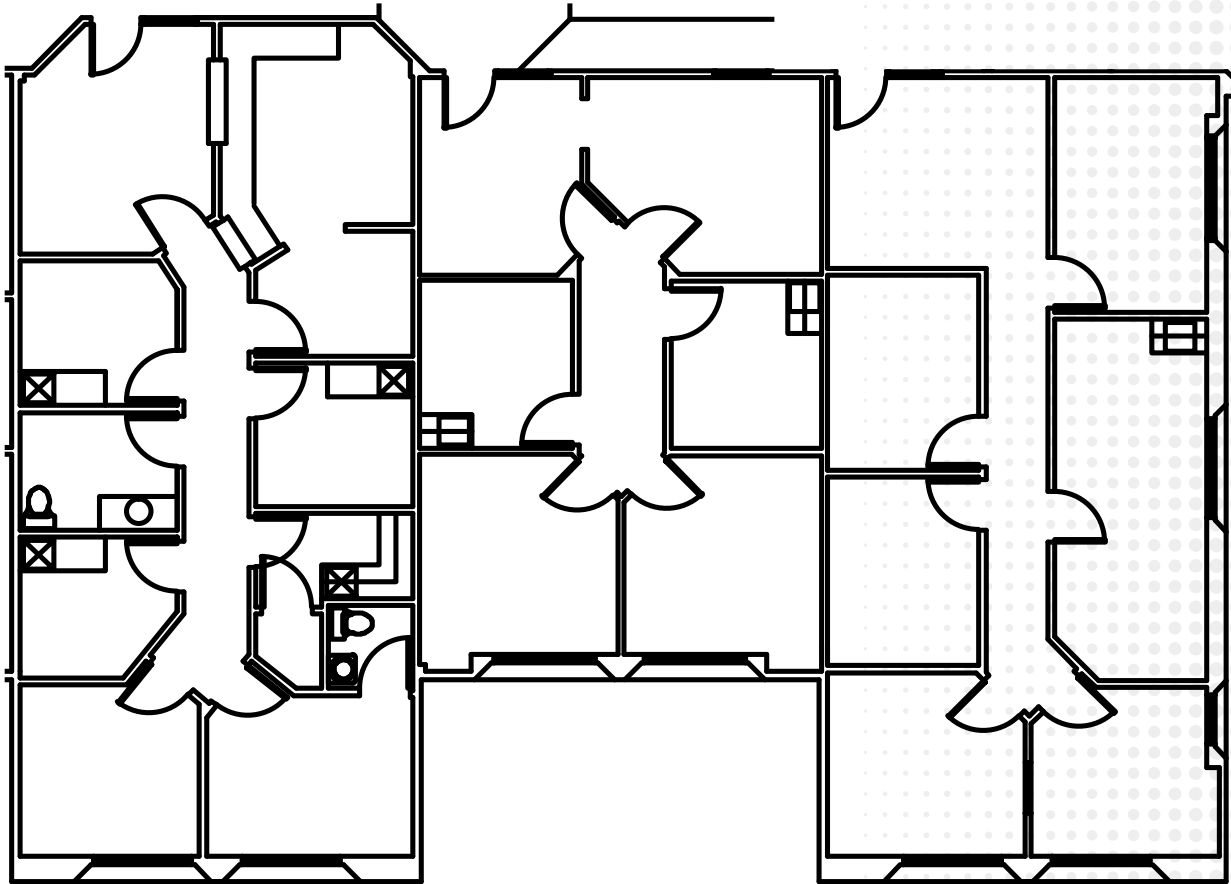
NEHAL WADHWA
+1 858 625 5228
CA LIC. #01859922
nehal.wadhwa@cushwake.com

MATTHEW MELENDRES
+1 619 732 6026
CA LIC. #02162349
matthew.melendres@cushwake.com

SUITE N205 - N209

UP TO 3,677 SF

15708 POMERADO ROAD
POWAY, CA 92064



Building owned and managed by
HEALTHCARE REALTY

NEHAL WADHWA
+1 858 625 5228
CA LIC. #01859922
nehal.wadhwa@cushwake.com

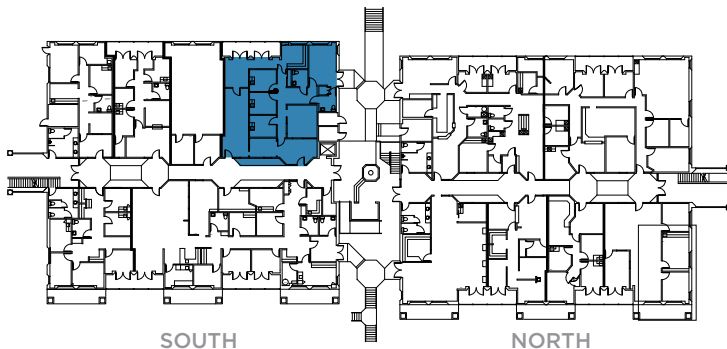
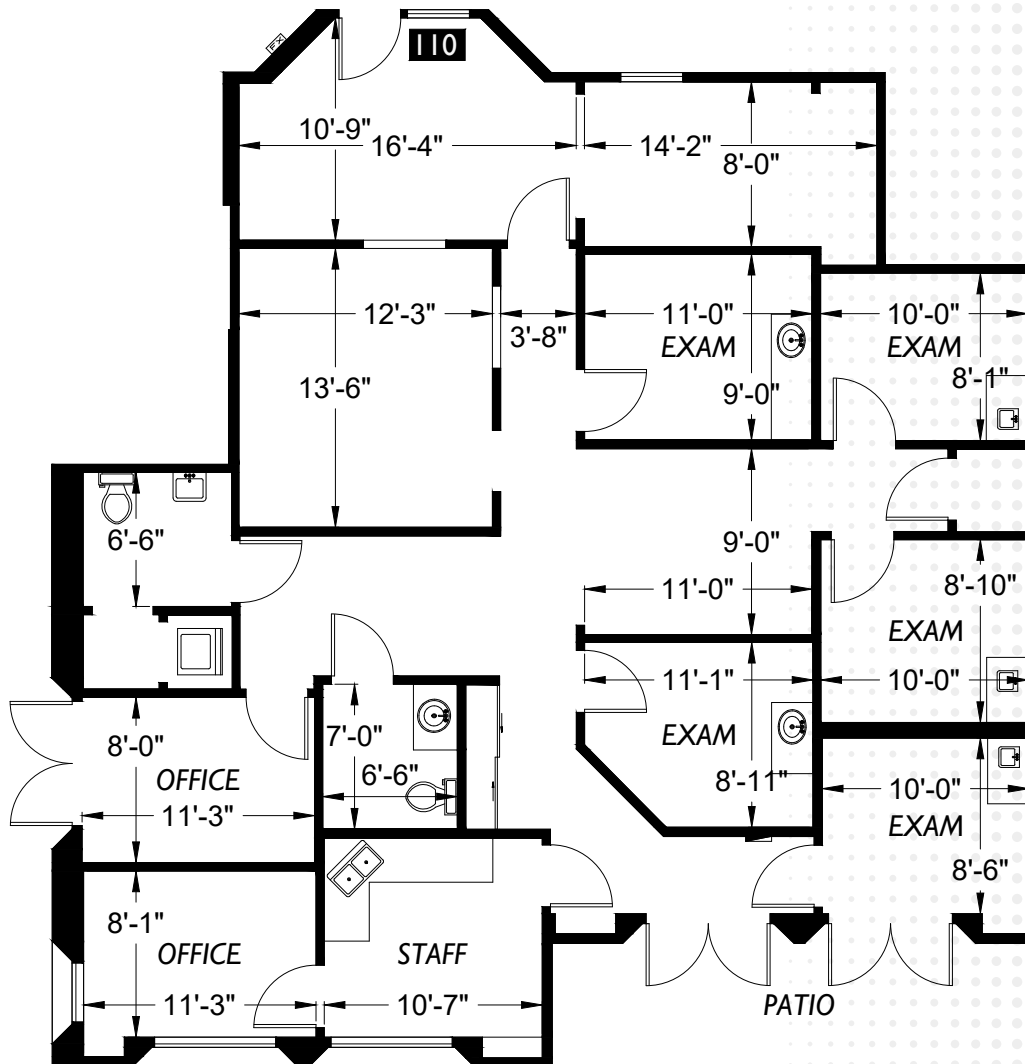
MATTHEW MELENDRES
+1 619 732 6026
CA LIC. #02162349
matthew.melendres@cushwake.com

SUITE S110

2,277 SF

MOVE-IN READY SPEC SUITE

15706 POMERADO ROAD
POWAY, CA 92064



Building owned and managed by
HEALTHCARE REALTY

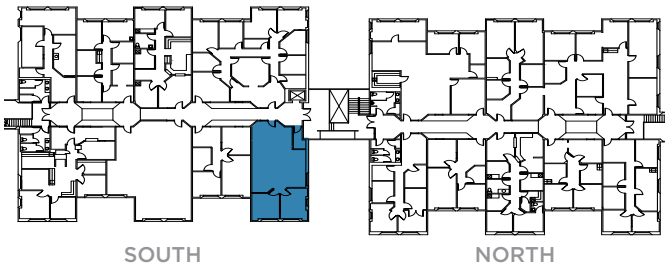
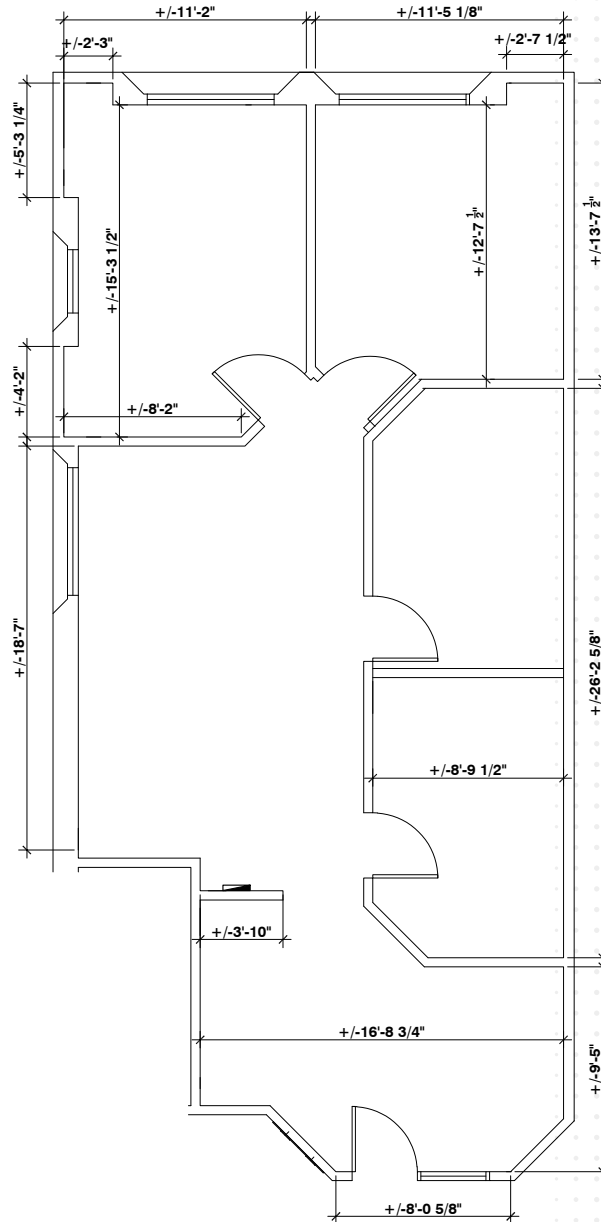
NEHAL WADHWA
+1 858 625 5228
CA LIC. #01859922
nehal.wadhwa@cushwake.com

MATTHEW MELENDRES
+1 619 732 6026
CA LIC. #02162349
matthew.melendres@cushwake.com

SUITE S209

1,185 SF

15706 POMERADO ROAD
POWAY, CA 92064



Building owned and managed by
HEALTHCARE REALTY

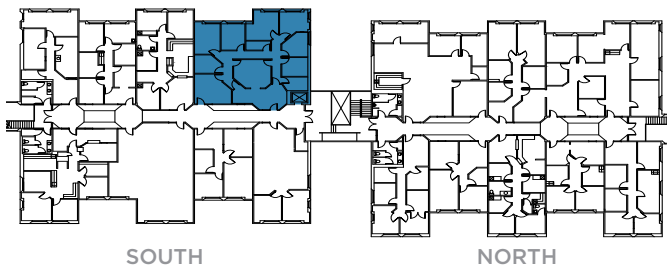
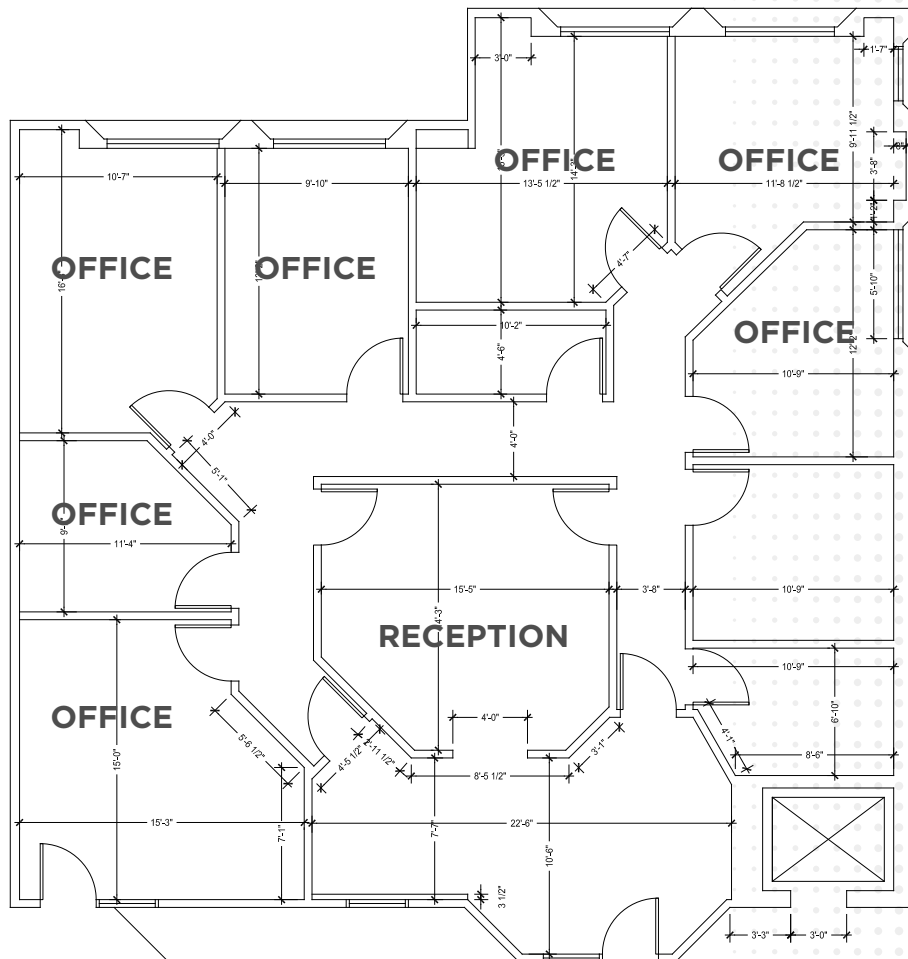
NEHAL WADHWA
+1 858 625 5228
CA LIC. #01859922
nehal.wadhwa@cushwake.com

MATTHEW MELENDRES
+1 619 732 6026
CA LIC. #02162349
matthew.melendres@cushwake.com

SUITE S210

2,430 SF

15706 POMERADO ROAD
POWAY, CA 92064



Building owned and managed by
HEALTHCARE REALTY

NEHAL WADHWA
+1 858 625 5228
CA LIC. #01859922
nehal.wadhwa@cushwake.com

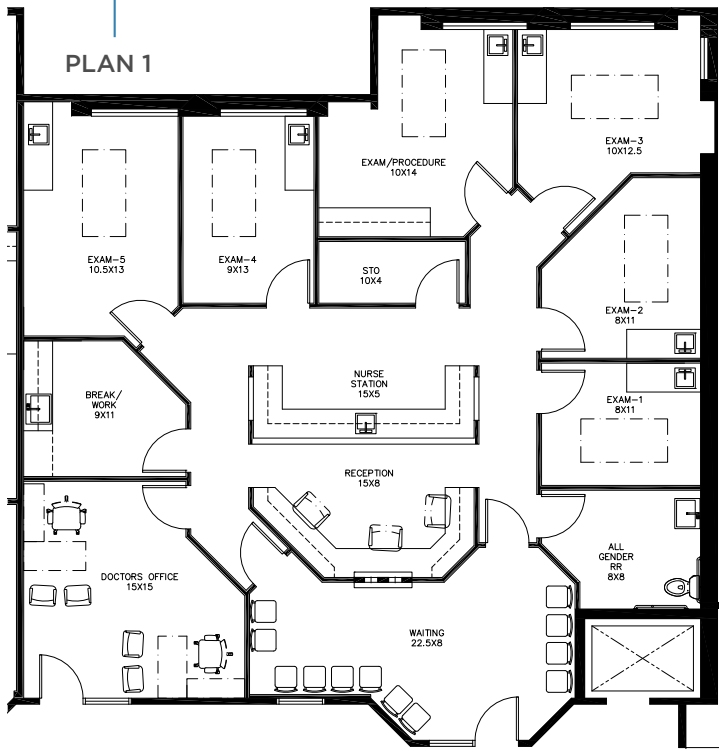
MATTHEW MELENDRES
+1 619 732 6026
CA LIC. #02162349
matthew.melendres@cushwake.com

SUITE S210

CONCEPT MEDICAL FLOOR PLANS

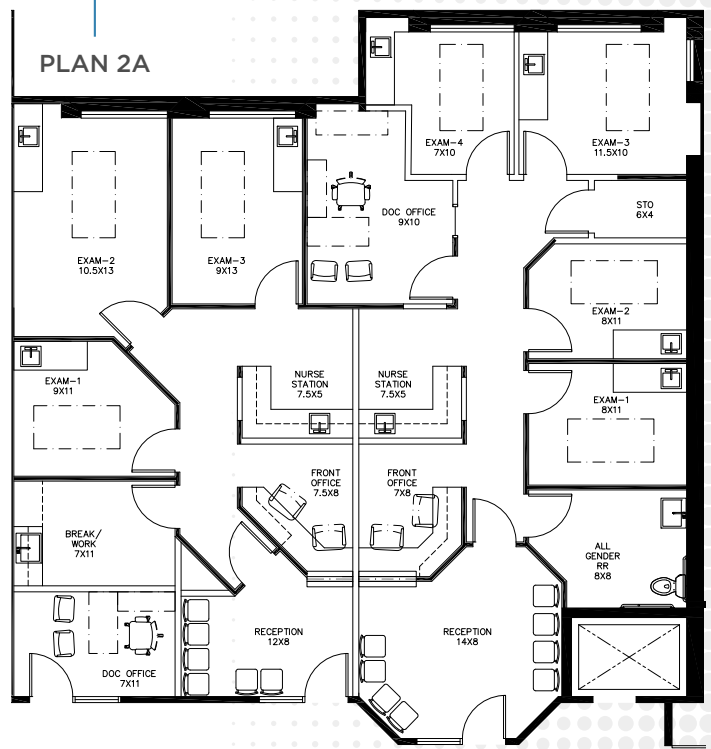
±2,430 RSF

PLAN 1



±1,106 RSF

PLAN 2A



±1,325 RSF

PLAN 2B



Building owned and managed by
HEALTHCARE REALTY

NEHAL WADHWA
+1 858 625 5228
CA LIC. #01859922
nehal.wadhwa@cushwake.com

MATTHEW MELENDRES
+1 619 732 6026
CA LIC. #02162349
matthew.melendres@cushwake.com

CONCEPT DENTAL FLOOR PLANS



POMERADO

PROFESSIONAL PLAZA



Premier Medical Office Space for Lease

NEHAL WADHWA
+1 858 625 5228
CA LIC. #01859922
nehal.wadhwa@cushwake.com

MATTHEW MELENDRES
+1 619 732 6026
CA LIC. #02162349
matthew.melendres@cushwake.com

15706 + 15708 POMERADO ROAD
POWAY, CA 92064



Building owned and managed by
HEALTHCARE REALTY

©2026 Cushman & Wakefield. All rights reserved. The information contained in this communication is strictly confidential. This information has been obtained from sources believed to be reliable but has not been verified. NO WARRANTY OR REPRESENTATION, EXPRESS OR IMPLIED, IS MADE AS TO THE CONDITION OF THE PROPERTY (OR PROPERTIES) REFERENCED HEREIN OR AS TO THE ACCURACY OR COMPLETENESS OF THE INFORMATION CONTAINED HEREIN, AND SAME IS SUBMITTED SUBJECT TO ERRORS, OMISSIONS, CHANGE OF PRICE, RENTAL OR OTHER CONDITIONS, WITHDRAWAL WITHOUT NOTICE, AND TO ANY SPECIAL LISTING CONDITIONS IMPOSED BY THE PROPERTY OWNER(S). ANY PROJECTIONS, OPINIONS OR ESTIMATES ARE SUBJECT TO UNCERTAINTY AND DO NOT SIGNIFY CURRENT OR FUTURE PROPERTY PERFORMANCE. COE-PM-WEST-01/26/26