



AT FRIENDLY CENTER
SIGNATURE
PLACE

3200 NORTHLINE AVENUE | GREENSBORO, NC 27408



PROPERTY HIGHLIGHTS

Return to the office with a freshly designed space in the heart of Greensboro's most popular submarket

Three-Story Class A Office Space with flexible layout suitable for retail, service, or showroom users

Immediate proximity to Friendly Shopping center located in Green Valley office submarket

Flexible office sizes with large floorplates to accommodate various office layouts

Free, ample covered parking

Recent building upgrades include:

- Improved access from parking areas (automatic doors)
- Interior renovations/upgrades

Escalator access from P3 to 1st Floor

Elevator access from all parking levels

Numerous dining, retail and service amenities within walking distance

Prominent signage and visibility opportunities

P3 LEVEL

KW: 20,694 SF

1ST LEVEL

Suite 100: 15,407 SF (Dedicated Entrance into Space from Parking Lot)

Suite: 109: 1,192 SF

Suite 110: 4,423 SF (Medical Office/ Infusion Services)

Suite:120: 4,185 SF

Suite 137: 1,575 SF

2ND LEVEL

Suite 220: 16,029 SF

Suite 240: 23,399 SF

Suite 250: 25,000 SF (Medical Office)

3RD LEVEL

Suite 330: 9,985 SF



P3 RETAIL/OFFICE OPPORTUNITY



FIRST LEVEL



SECOND LEVEL



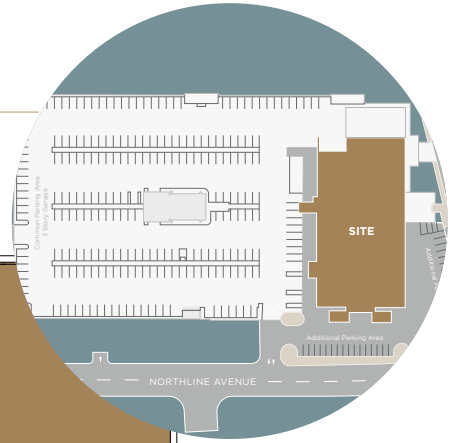
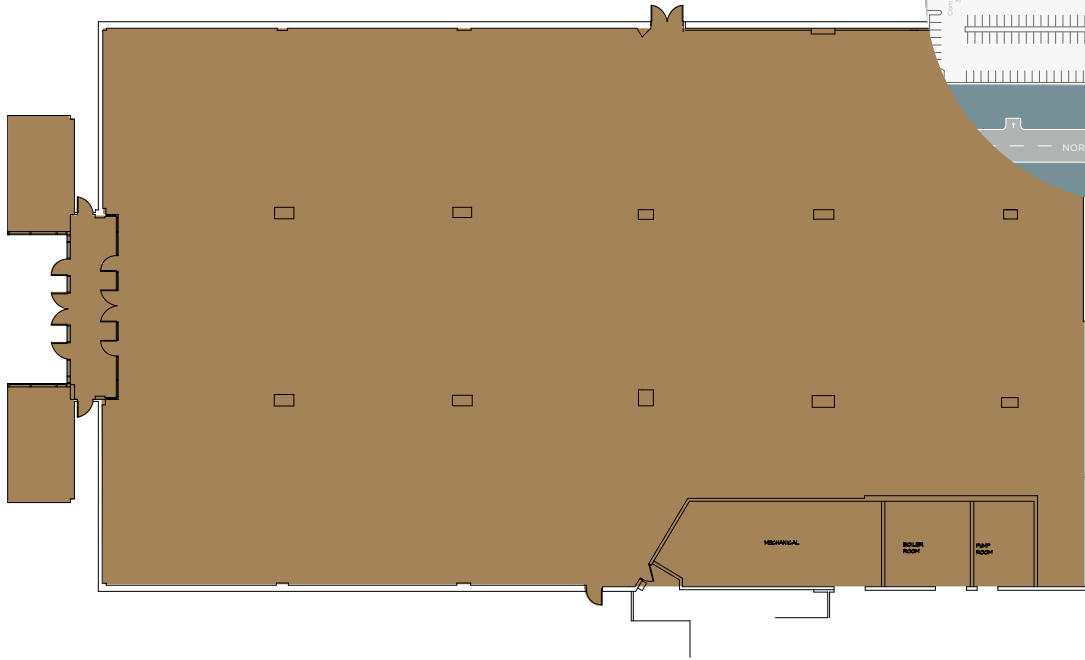
ELEVATOR ACCESS



THIRD LEVEL

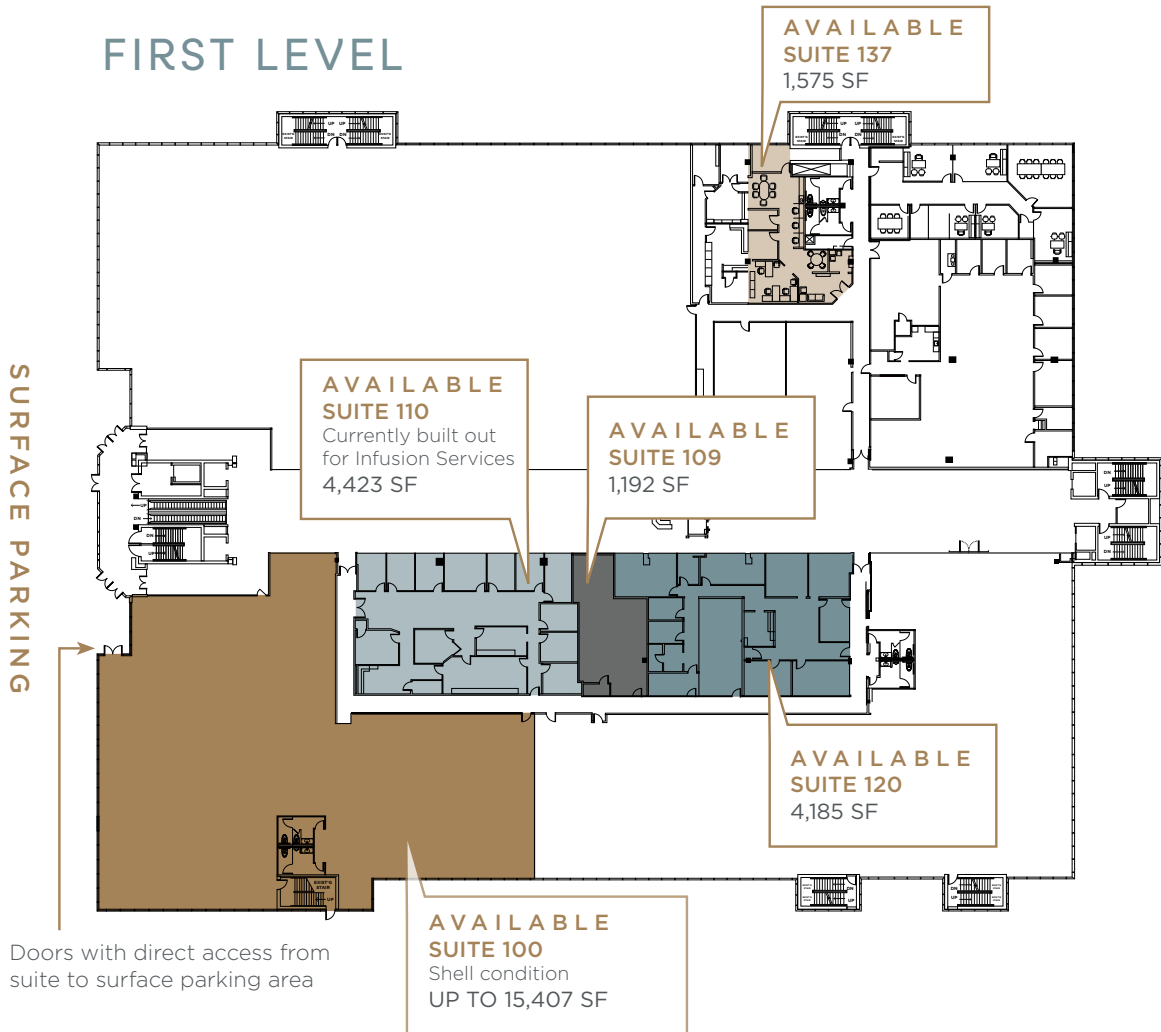
AVAILABILITY

P3 LEVEL



**AVAILABLE
RETAIL/OFFICE
OPPORTUNITY**
20,694 SF

FIRST LEVEL



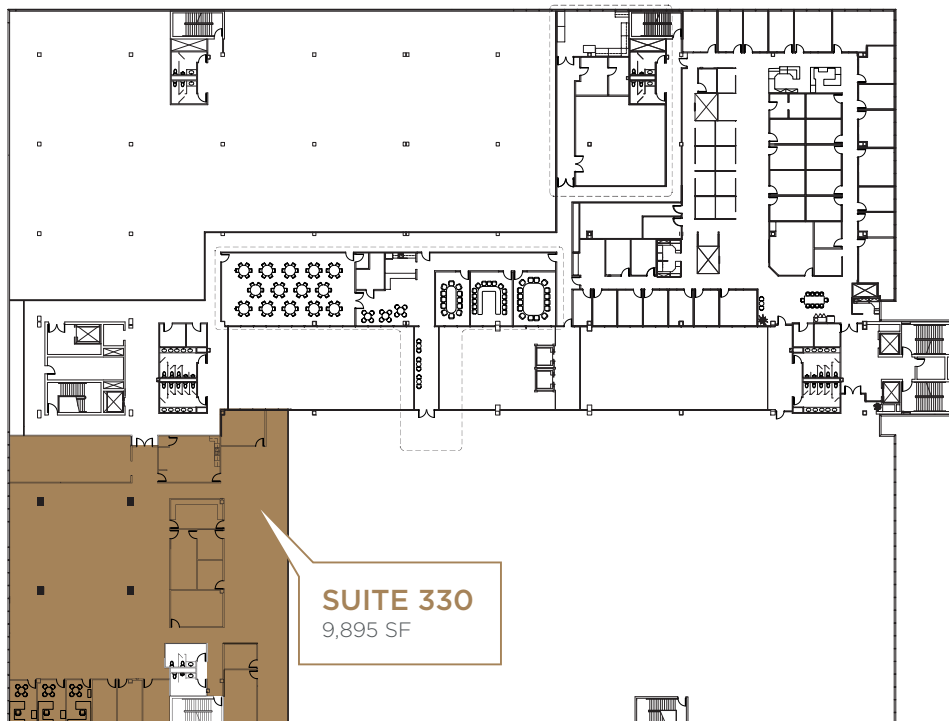
SECOND LEVEL

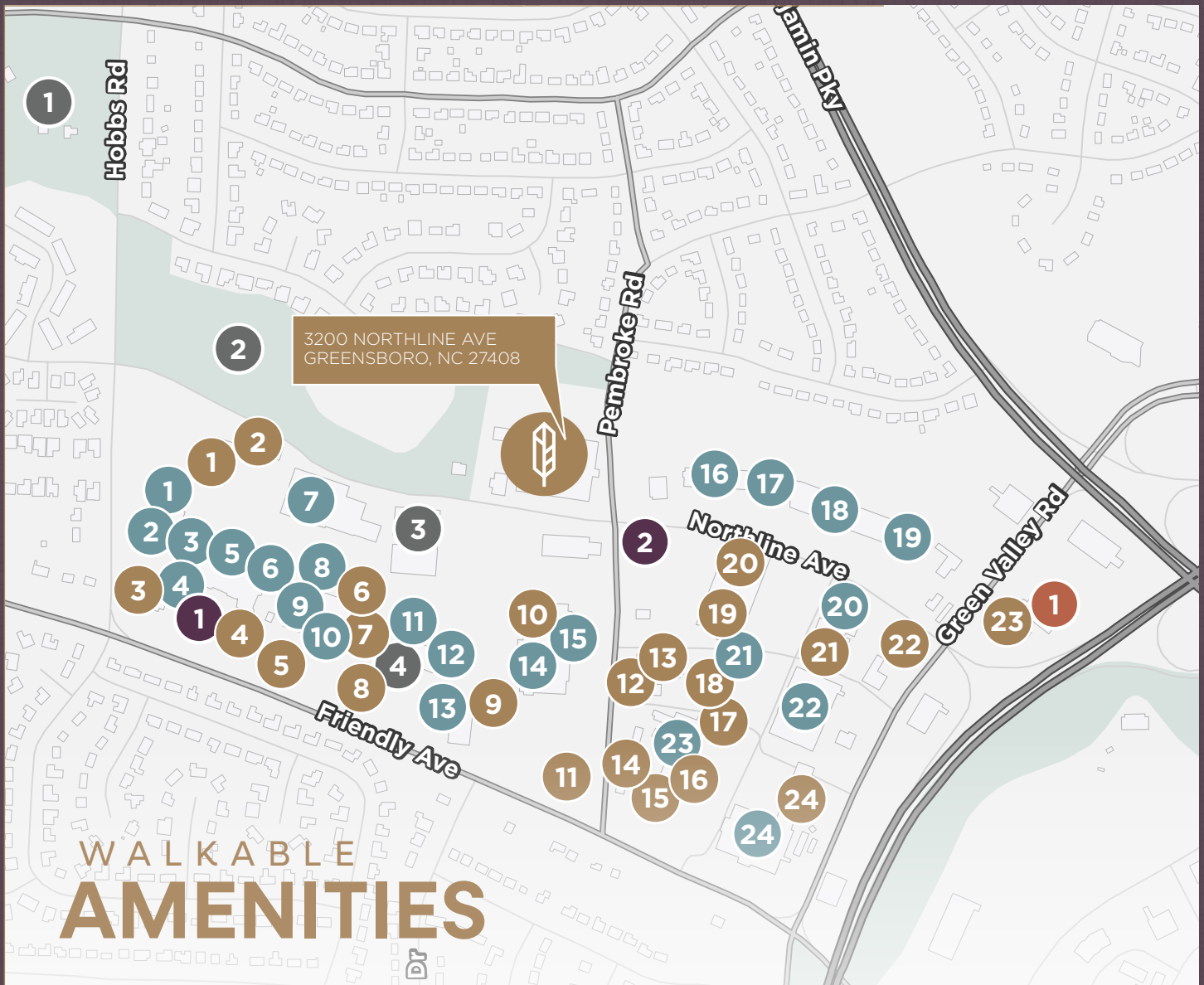
AS-BUILT
AVAILABLE
MEDICAL OFFICE SPACE
SUITE 250
+/- 25,000 SF
> [CLICK HERE TO VIEW PDF](#)

CLICK HERE
TO VIEW
THE 3D WALK
THROUGH



THIRD LEVEL





WALKABLE AMENITIES

ENTERTAINMENT

- 1 BICENTENNIAL GARDENS
- 2 BOTANICAL GARDENS
- 3 REGAL CINEMAS
- 4 WINESTYLES

FITNESS

- 1 PURE BARRE
- 2 STRETCHLAB
- 3 O2 FITNESS

HOTELS

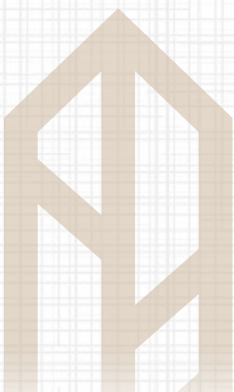
- 1 O'HENRY HOTEL

RESTAURANTS

- 1 CAVA
- 2 MARIO'S PIZZA
- 3 FLEMING'S STEAKHOUSE
- 4 PF CHANG'S
- 5 BRAVO ITALIANO
- 6 JASON'S DELI
- 7 CHOPT SALAD CO
- 8 MIMI'S CAFE
- 9 PIEOLOGY
- 10 GENJI SUSHI
- 11 CHICK-FIL-A
- 12 FIVE GUYS
- 13 JUICESHOP
- 14 THE CHEESECAKE FACTORY
- 15 HARPER'S
- 16 PITA DELITE
- 17 US SUSHI
- 18 MOE'S SOUTHWEST GRILL
- 1 COLD STONE CREAMERY
- 20 CARIBOU COFFEE
- 21 POBLANO'S
- 22 MCDONALD'S
- 23 GREEN VALLEY GRILL

RETAIL

- 1 ULTA BEAUTY
- 2 DSW
- 3 REI
- 4 CARHARTT
- 5 LULULEMON
- 6 BROOKS BROTHERS
- 7 HARRIS TEETER
- 8 CHICO'S
- 9 WARBY PARKER
- 10 TALBOT'S
- 11 WILLIAMS SONOMA
- 12 APPLE STORE
- 13 POTTERY BARN
- 14 WHOLE FOODS MARKET
- 15 FRIENDLY CENTER
- 16 BIRKENSTOCK
- 17 BARNES & NOBLE
- 18 OLD NAVY
- 19 WALGREENS
- 20 AT&T STORE
- 21 ATHLETA
- 22 MACY'S
- 23 ORVIS
- 24 BELK





FOR MORE INFORMATION, PLEASE CONTACT:

RYAN GIOFFRE
Senior Director
+1 336 821 3822
ryan.gioffre@cushwake.com

RYAN CONBOY, SIOR
Managing Director
+1 336 821 3832
ryan.conboy@cushwake.com

HENRY CARRISON
+1 336 451 5949
henry@bellcommercial.net

TRE VAUGHN
+1 336 429 0089
tre@bellcommercial.net



AT FRIENDLY CENTER

SIGNATURE
PLACE

