

# AVAILABLE FOR LEASE



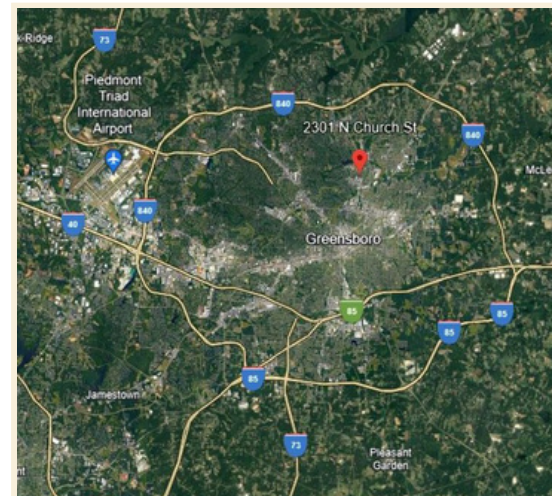
## Property Highlights

- ±5,061 SF Available For Lease
- \$ 14/SF NNN
- Two-story, standalone building
- Main level is ± 3,759 SF
- Upper level is ± 1,302 SF
- Medical or general office use with production space
- 0.46-acre lot with ample parking in front and rear of building
- Zoning: C-L
- Prominent signage on N Church St via pylon pole and building signage
- Convenient to numerous retail amenities, great access to I-840 (Greensboro Urban Loop), US-29 and US-220

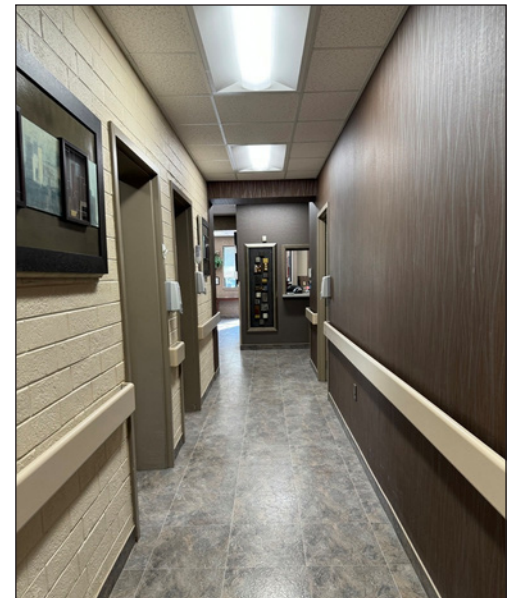
**Ryan Gioffre**  
Senior Director  
+1 336 821 3822  
ryan.gioffre@cushwake.com

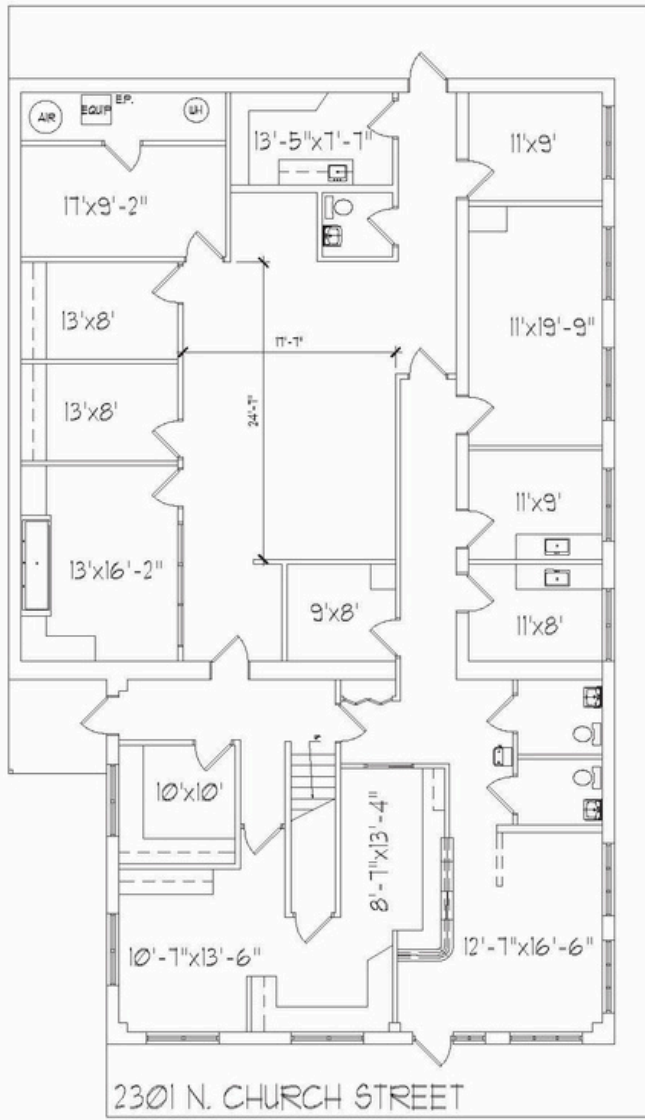
**Jason Ofsanko**  
Executive Director  
+1 336 812 3300  
jason.ofsanko@cushwake.com

628 Green Valley Road, Suite 202  
Greensboro, NC 27408 | USA  
Main +1 336 668 9999  
Fax +1 336 668 0888  
**cushmanwakefield.com**

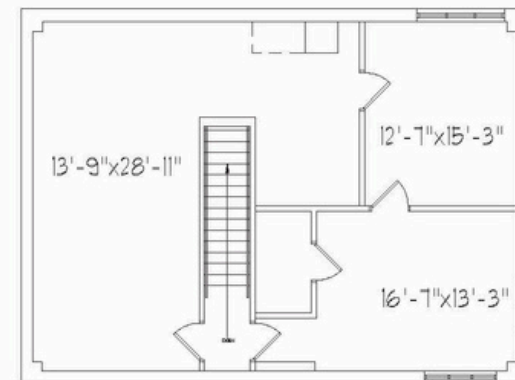








Front Entrance



2301 N. CHURCH STREET  
2ND FLOOR  
1,302 SF



