
FULL BUILDING OPPORTUNITY FOR LEASE

3670

STONE WAY NORTH

SEATTLE, WA





PROPERTY FEATURES

ADDRESS

3670 Stone Way North
Seattle, WA 98103

BUILDING SIZE

41,690 SF

PARKING

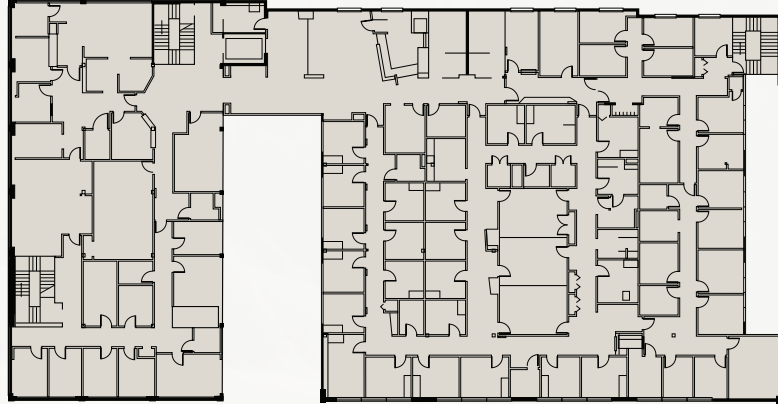
44 Stalls in Building Garage

Located in Seattle's vibrant Fremont neighborhood, 3670 Stone offers a prime office space opportunity in one of the city's most dynamic and walkable areas. This well-positioned building provides excellent access to nearby dining, retail, and transit options. With nearby access to the 27-mile Burke-Gilman Trail, employees can bike, run, or even paddle board during the workday, enjoying a truly unique office environment. 3670 Stone is an ideal setting for businesses looking to thrive in a lively, amenity-rich environment. that provides a perfect balance of productivity and outdoor lifestyle, with seamless connectivity to North Puget Sound and beyond.

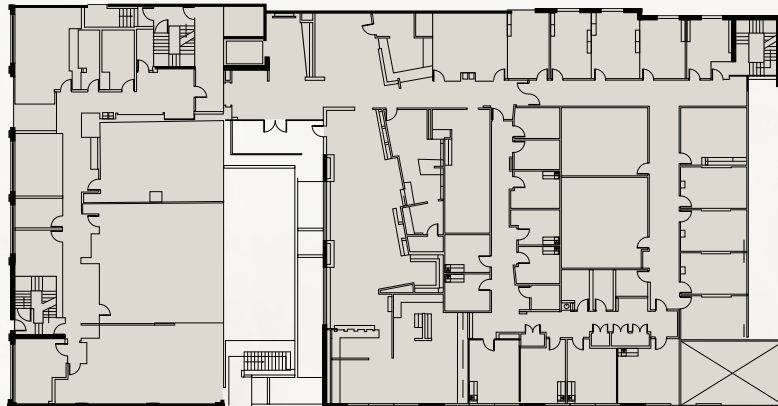
FLOOR PLAN

41,690 SF

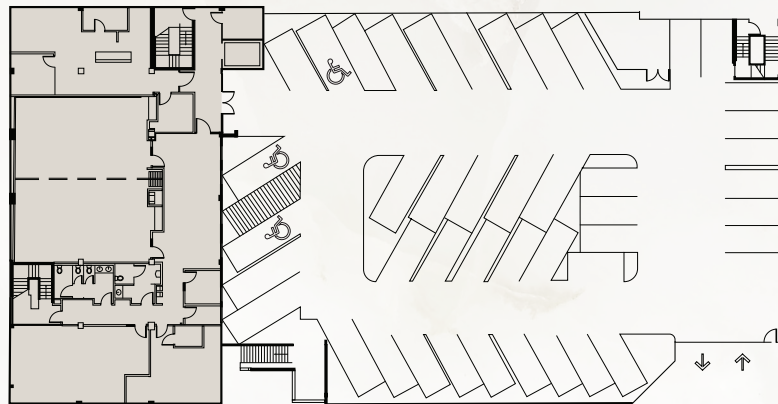
SECOND LEVEL



FIRST LEVEL



**BASEMENT /
GARAGE LEVEL**





LEAH MASSON

Senior Director

+1 206 215 9803

leah.masson@cushwake.com

BRANDON BURMEISTER

Senior Director

+1 206 215 9702

brandon.burmeister@cushwake.com



601 Union Street, Seattle, WA 98101 | cushmanwakefield.com

©2025 Cushman & Wakefield. All rights reserved. The information contained in this communication is strictly confidential. This information has been obtained from sources believed to be reliable but has not been verified. No warranty or representation, express or implied, is made as to the condition of the property (or properties) referenced herein or as to the accuracy or completeness of the information contained herein, and same is submitted subject to errors, omissions, change of price, rental or other conditions, withdrawal without notice, and to any special listing conditions imposed by the property owner(s). Any projections, opinions or estimates are subject to uncertainty and do not signify current or future property performance.