



**CUSHMAN &
WAKEFIELD**

Southwestern Ontario

FOR LEASE

1326 HURON STREET

UNIT 1

London, ON



END CAP RETAIL SPACE IN A VIBRANT SHOPPING AREA

ASKING RENT

\$24.00
PSF NET

ADDITIONAL RENT

\$10.56
PSF (Est.)

AVAILABLE SPACE

3,778
SF

JAMESON LAKES

Sales Representative

519 438 8548

jameson.lake@cushwakeswo.com

CUSHMAN & WAKEFIELD
SOUTHWESTERN ONTARIO
850 Medway Park Dr, Suite 201
London, Ontario N6G 5C6
www.cushwakeswo.com



**CUSHMAN &
WAKEFIELD**

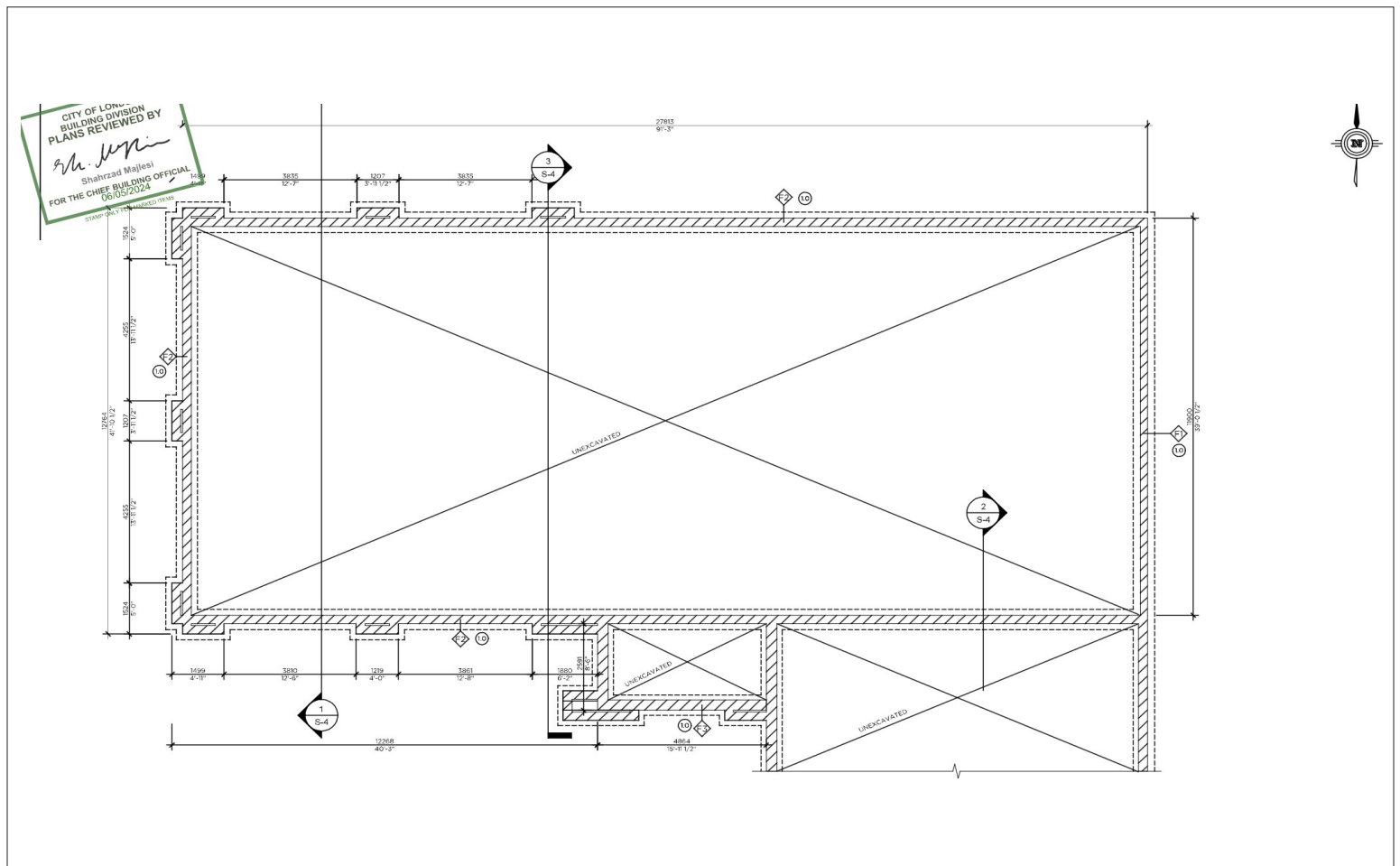
Southwestern Ontario

©2025 Cushman & Wakefield Southwestern Ontario, Real Estate Brokerage, Independently Owned and Operated. A Member of the Cushman & Wakefield Alliance. This information has been obtained from sources believed to be reliable but has not been verified. No warranty or representation, express or implied, is made as to the condition of the property (or properties) referenced herein or as to the accuracy or completeness of the information contained herein, and same is submitted subject to errors, omissions, change of price, rental or other conditions, withdrawal without notice, and to any special listing conditions imposed by the property owner(s). Any projections, opinions or estimates are subject to uncertainty and do not signify current or future property performance. All rights reserved.

ABOUT THE PROPERTY

Brand new 3,778 square-foot end cap unit for lease in a vibrant shopping area in northeast London.

- Asking rent is \$10,880.64 per month + HST and utilities
- Zoning: ASA1/ASA3
- This bright, open space offers a blank canvas, perfect for a variety of retail, medical, or office uses



JAMESON LAKES

Sales Representative

519 438 8548

jameson.lake@cushwakeswo.com

CUSHMAN & WAKEFIELD
SOUTHWESTERN ONTARIO
850 Medway Park Dr, Suite 201
London, Ontario N6G 5C6
www.cushwakeswo.com

CUSHMAN & WAKEFIELD
Southwestern Ontario

©2025 Cushman & Wakefield Southwestern Ontario, Real Estate Brokerage, Independently Owned and Operated. A Member of the Cushman & Wakefield Alliance. This information has been obtained from sources believed to be reliable but has not been verified. No warranty or representation, express or implied, is made as to the condition of the property (or properties) referenced herein or as to the accuracy or completeness of the information contained herein, and same is submitted subject to errors, omissions, change of price, rental or other conditions, withdrawal without notice, and to any special listing conditions imposed by the property owner(s). Any projections, opinions or estimates are subject to uncertainty and do not signify current or future property performance. All rights reserved.