

FOR SUBLEASE

# 4123 Olympic Boulevard

Erlanger, KY 41018



**14,994 RSF AVAILABLE**

*NEAR CVG AIRPORT*

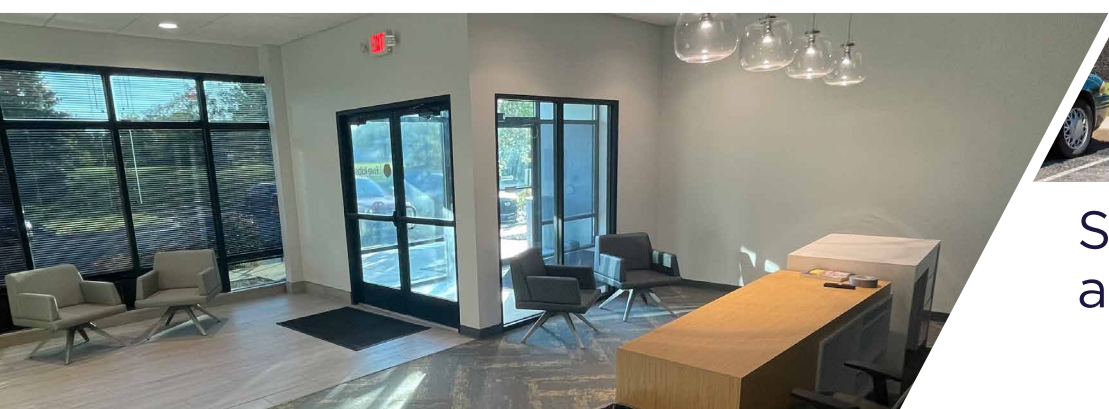


**CUSHMAN &  
WAKEFIELD**

Includes massive  
auditorium /  
training room!



# 4123 OLYMPIC HIGHLIGHTS



Surface parking lot with direct access to front entrance!



**14,994 SF AVAILABLE**  
FOR SUBLEASE



**CLOSE PROXIMITY**  
CVG AIRPORT, DHL  
SUPERCARGO & AMAZON  
PRIME AIR HUBS



**EASY ACCESS**  
I-275, I-75 & I-71



**NEARBY AMENITIES**  
HOTELS, RESTAURANTS &  
RETAIL



**PARKING RATIO**  
4.69/1,000



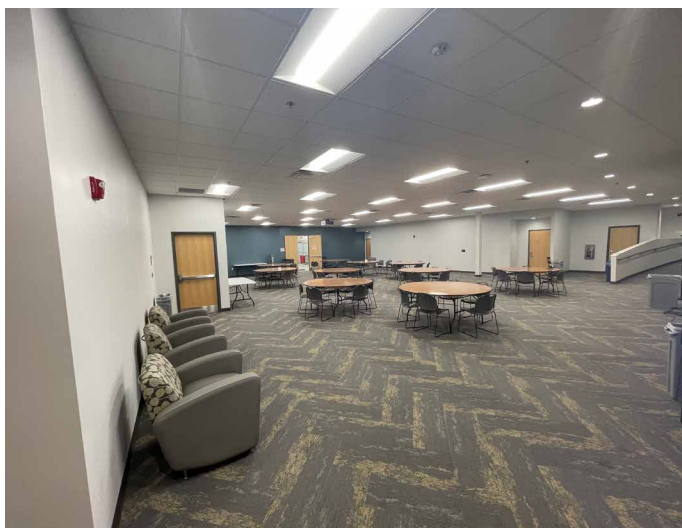
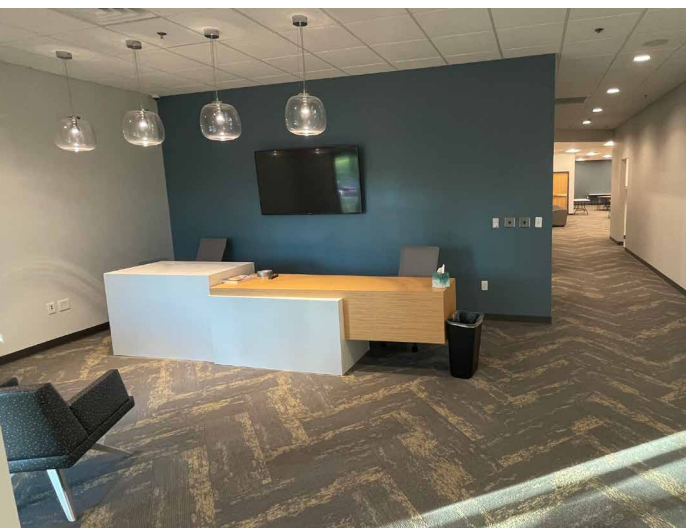
**ASKING RATE**  
\$19.75 /SF FSG



# 4123 OLYMPIC FOR SUBLEASE

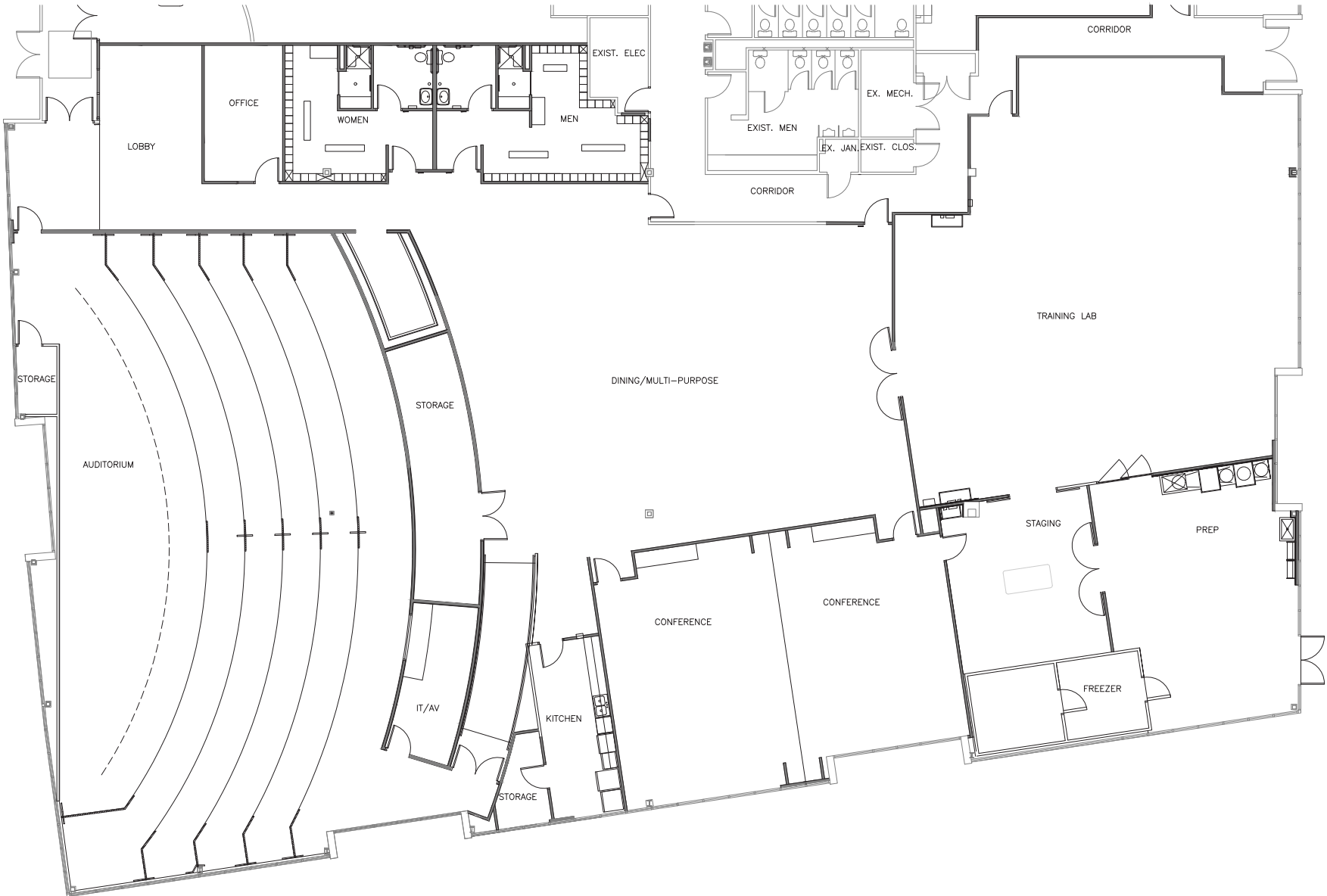


Massive 150-person  
auditorium / training center  
with IT control room!



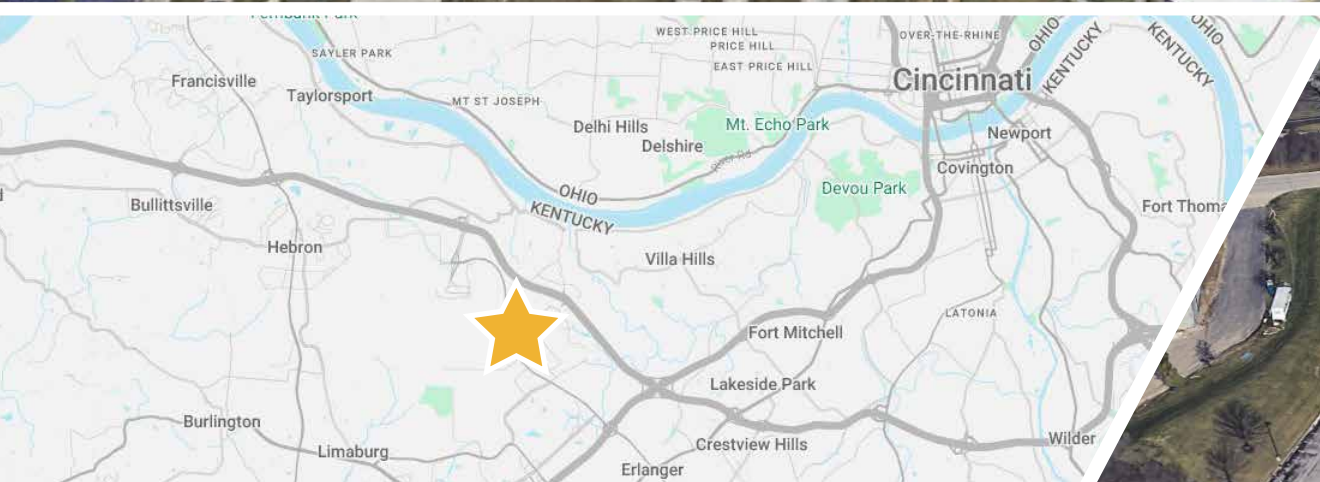
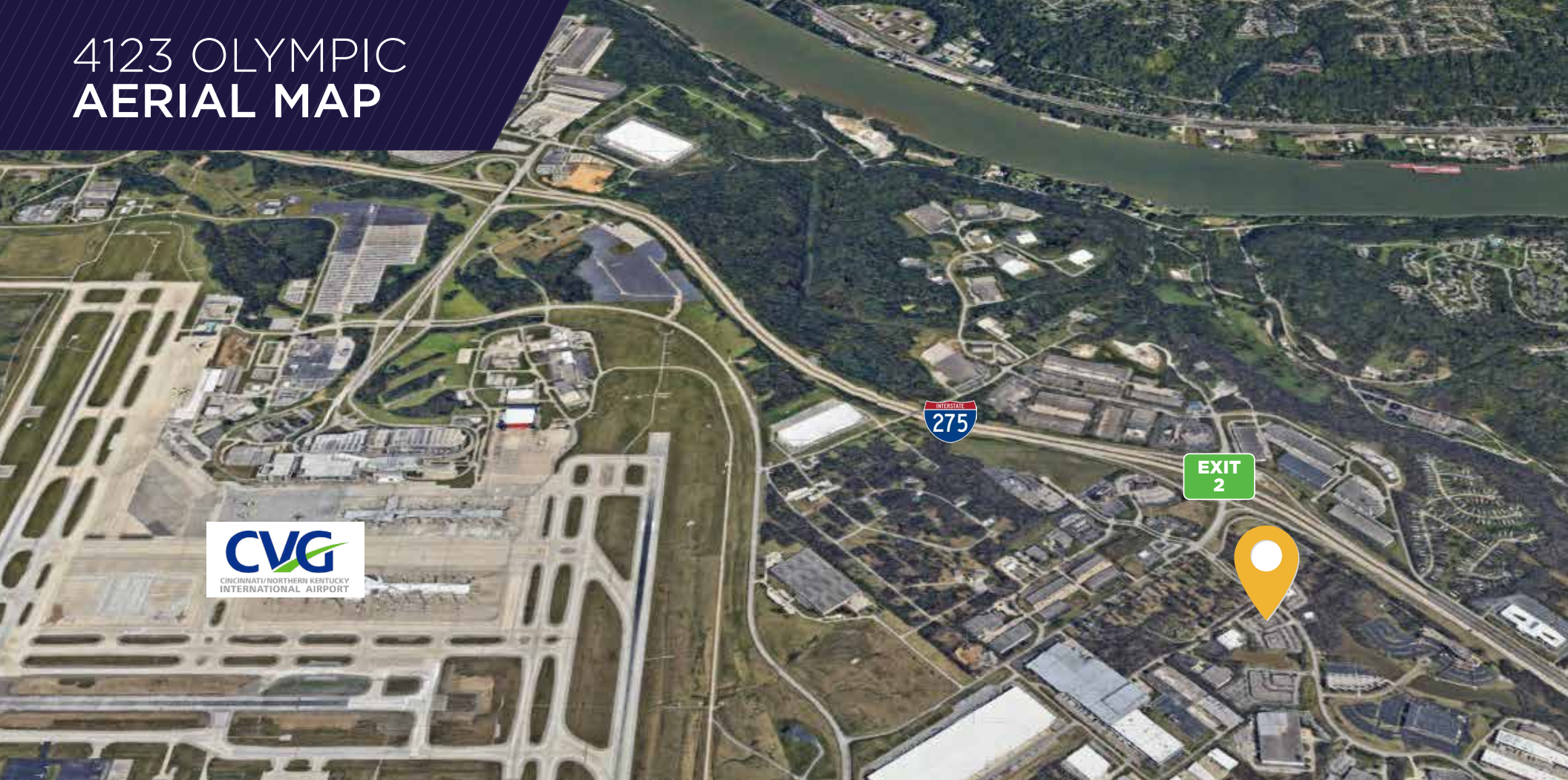
**LAB ROOM  
INCLUDED!**

4123 OLYMPIC  
14,994 SF





# 4123 OLYMPIC AERIAL MAP





# PROXIMITY TO IT ALL







**Joe Janszen**  
Senior Director  
+1 513 549 3011  
[joe.janszen@cushwake.com](mailto:joe.janszen@cushwake.com)

[cincyofficeadvisors.com](http://cincyofficeadvisors.com)