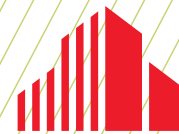


FOR LEASE



CUSHMAN &  
WAKEFIELD

**12,043 CONTIGUOUS RSF AVAILABLE**



8530 EAGLE POINT BLVD.

LAKE ELMO, MN

---

8530 Eagle Point Blvd. | Lake Elmo, MN

# PROPERTY HIGHLIGHTS

- 120 acre master planned business park
- Two-story 40,000 square foot building
- 20,000 square foot floor plates
- State-of-the-art mechanical systems
- Fiber optics available
- Building and monument signage available
- Excellent labor base, including Wisconsin border
- Excellent visibility along I-94 with great freeway access to both I-94 and I-494/694
- Close proximity to abundant restaurants, hotels, retail shopping, Prom Convention Center and banks
- Shower facilities
- Walking trail

BUILDING SIZE	40,384 SF
---------------	-----------

AVAILABLE SF	1,109 - 12,043 RSF
--------------	--------------------

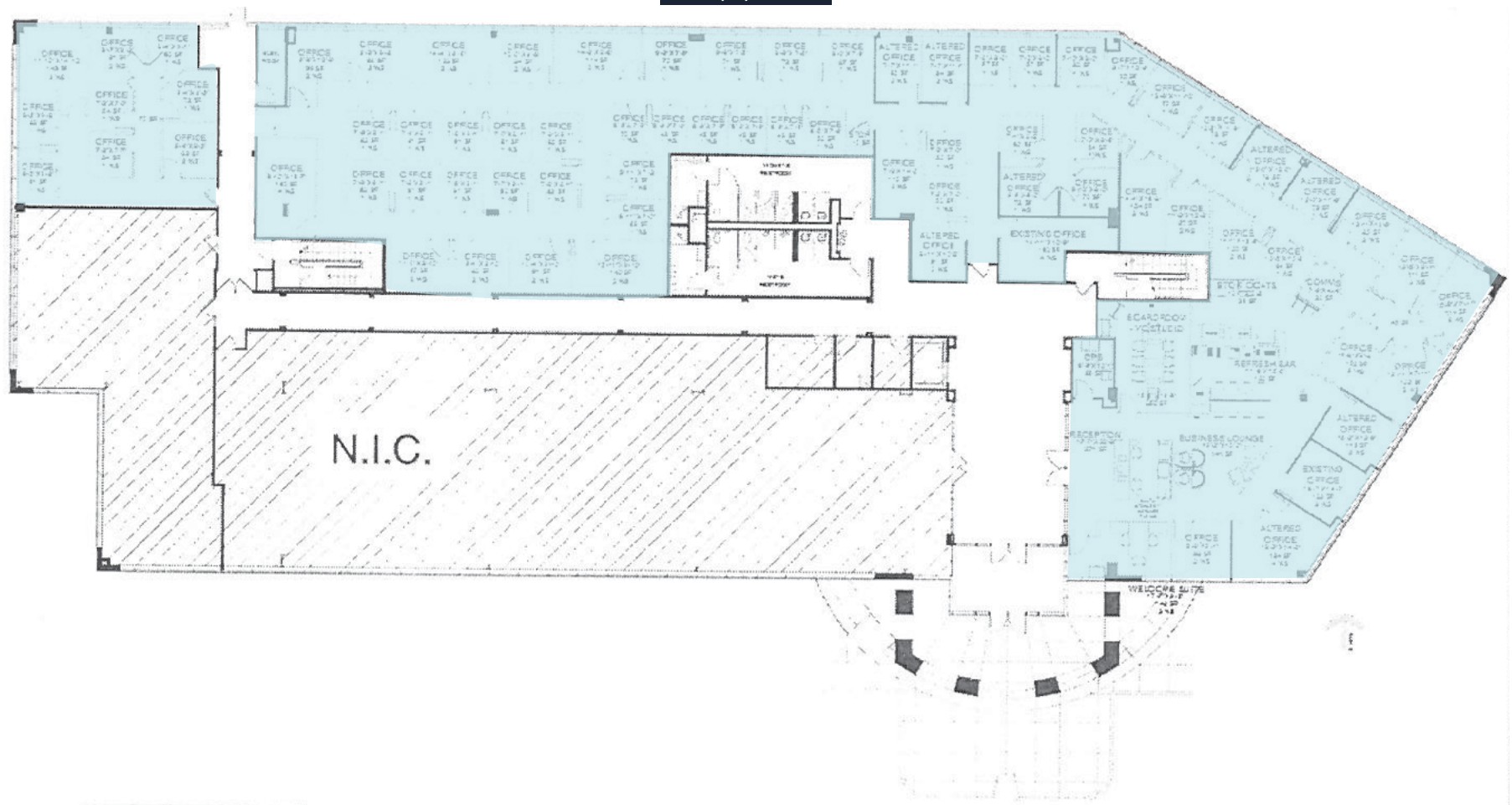
LEASE RATES	\$16.00 - \$18.00 PSF (Net)
-------------	-----------------------------

2025 TAX & OPEX	\$15.96 psf
-----------------	-------------



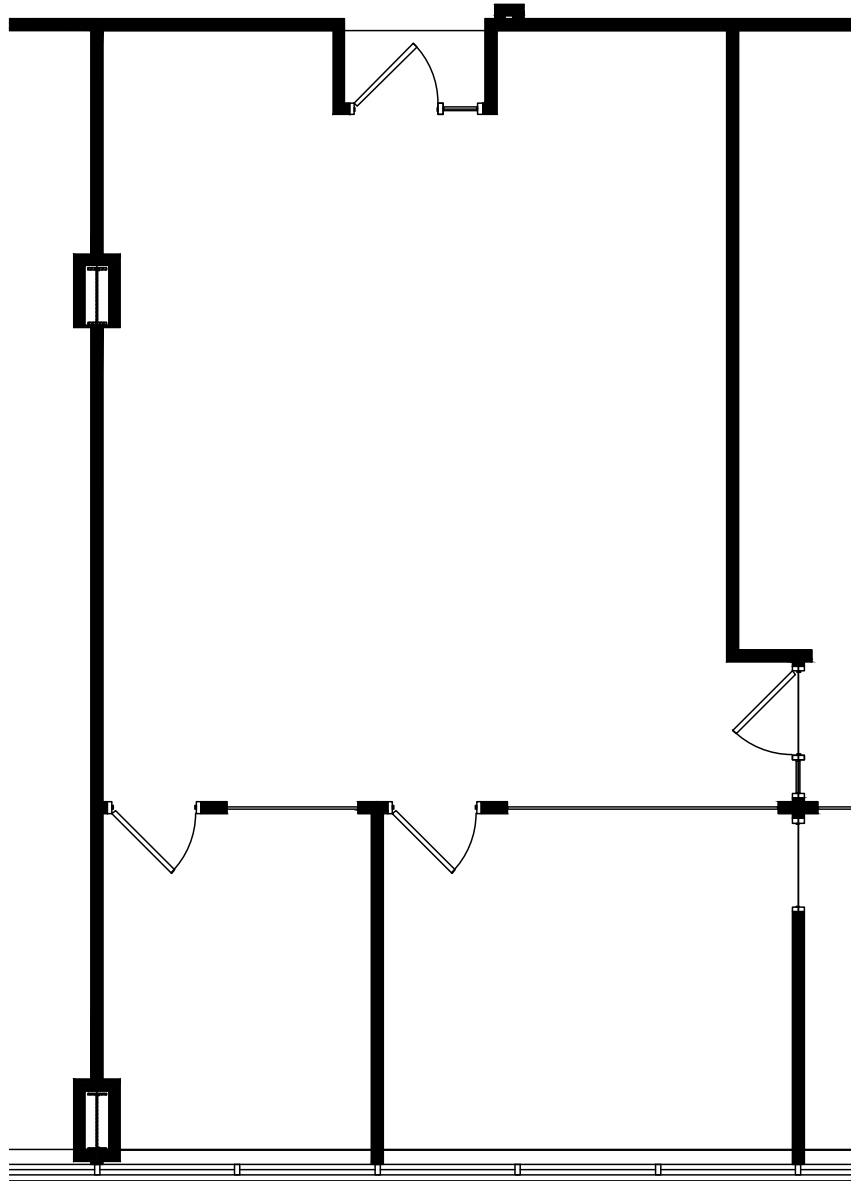


1st Floor  
12,043 RSF  
Available  
11/1/25



FLOOR  
PLAN

Suite 255  
1,109 RSF



FLOOR  
PLAN





AERIAL  
**MAP**





# AMENITIES MAP





# LOCATION MAP

# CONTACT INFORMATION

## **ERIC KING**

Managing Director  
eric.king@cushwake.com  
+1 651 734 2385

3500 American Blvd W, Suite 200  
Minneapolis, MN 55431  
cushmanwakefield.com



©2025 Cushman & Wakefield. All rights reserved. The information contained in this communication is strictly confidential. This information has been obtained from sources believed to be reliable but has not been verified. NO WARRANTY OR REPRESENTATION, EXPRESS OR IMPLIED, IS MADE AS TO THE CONDITION OF THE PROPERTY (OR PROPERTIES) REFERENCED HEREIN OR AS TO THE ACCURACY OR COMPLETENESS OF THE INFORMATION CONTAINED HEREIN, AND SAME IS SUBMITTED SUBJECT TO ERRORS, OMISSIONS, CHANGE OF PRICE, RENTAL OR OTHER CONDITIONS, WITHDRAWAL WITHOUT NOTICE, AND TO ANY SPECIAL LISTING CONDITIONS IMPOSED BY THE PROPERTY OWNER(S). ANY PROJECTIONS, OPINIONS OR ESTIMATES ARE SUBJECT TO UNCERTAINTY AND DO NOT SIGNIFY CURRENT OR FUTURE PROPERTY PERFORMANCE.