

FOR SUBLEASE
32,372 SF AVAILABLE



4801 ONE OLYMPIA PARK PLAZA
LOUISVILLE, KY 40241

4801 OYLMPIA PARK PL | LOUISVILLE, KY 40241

PROPERTY HIGHLIGHTS

Class A building located in the prestigious Summit/Springhurst area. Full 2nd floor plug-and-play opportunity, existing furniture can remain. 1,811 sf training room located on the 3rd floor. The building has easy access to I-265 and I-71. Conveniently located next to a plethora of restaurants and retail shopping options.

Building Size: 119,587 sf

Space Available: 32,372

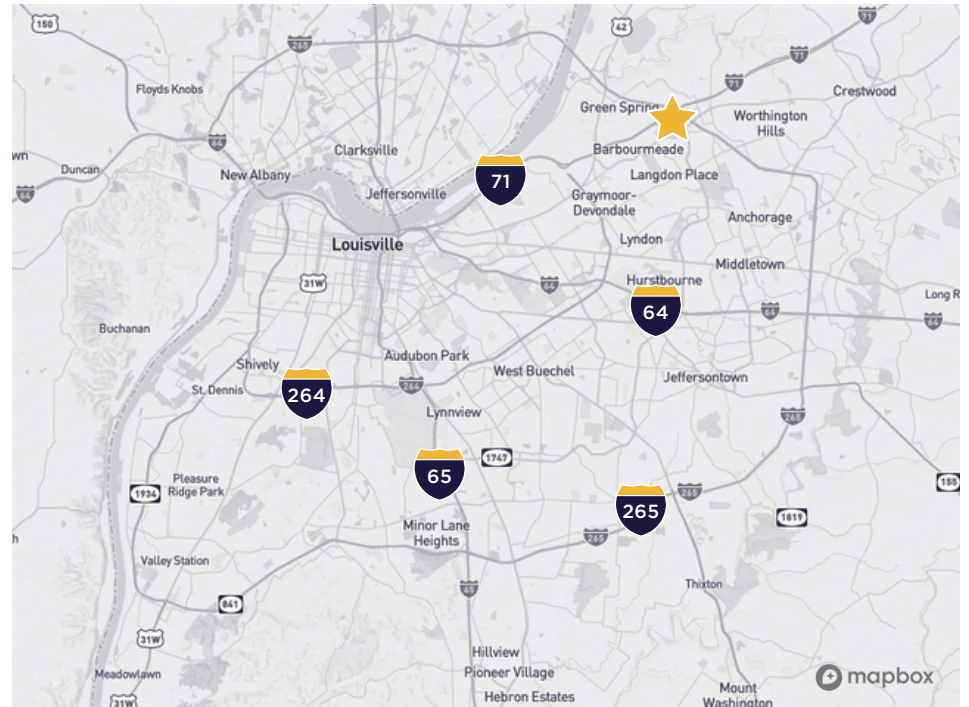
Suite Available: 2000 & 3300

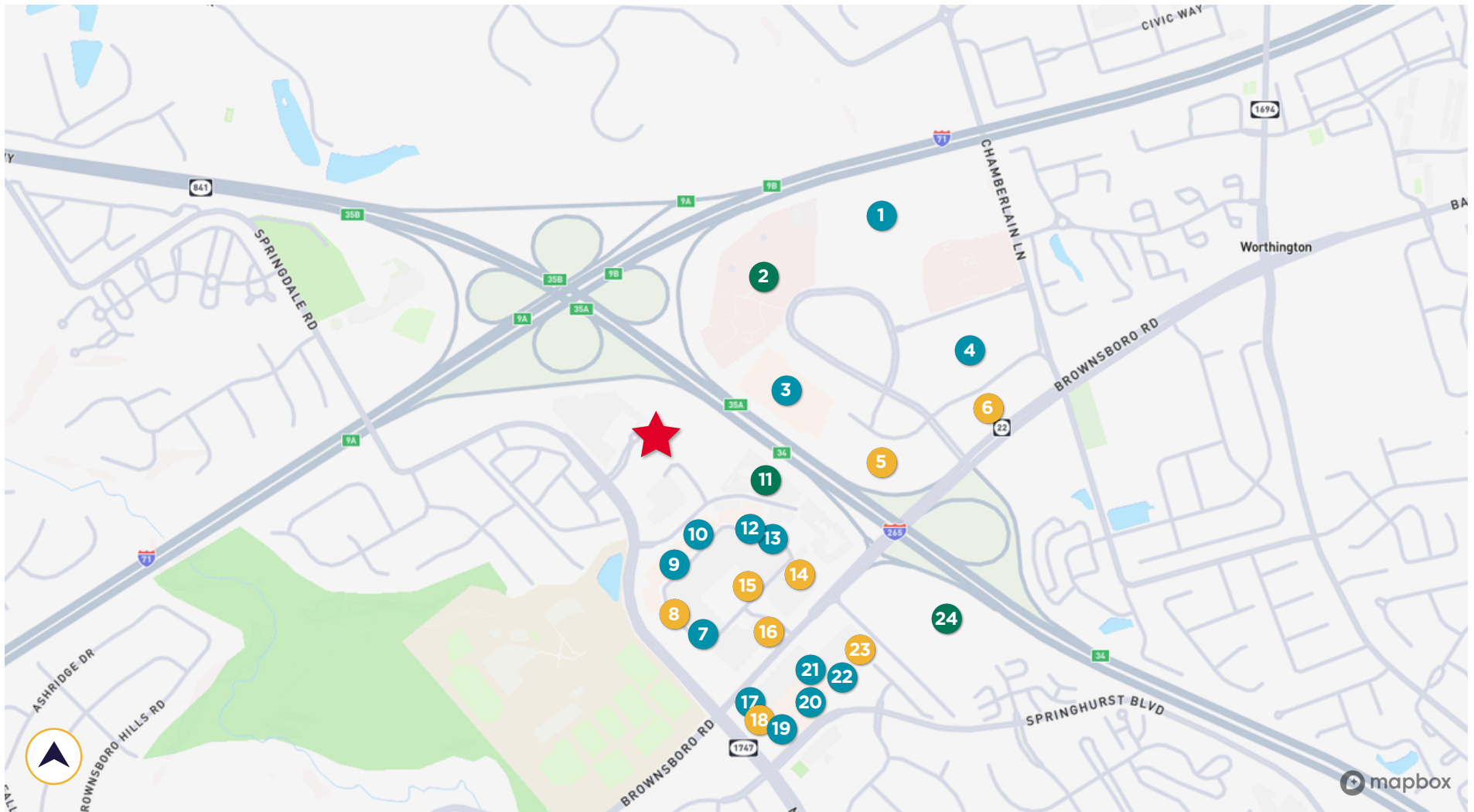
Zoning: OR-3

Year Built: 2001

Class: Class A

Parking Ratio: 4.5/1000





Restaurants

- 5. Olive Garden
- 6. Red Robin
- 8. Zoë's Kitchen
- 15. Drake's
- 16. Stoney River
- 14. Malone's
- 18. Five Guys
- 23. Outback Steakhouse

Retail

- 1. Costco
- 3. Lowe's
- 4. Cabela's
- 7. The Fresh Market
- 9. DSW Shoes
- 10. Ulta Beauty
- 12. Total Wine
- 13. Barnes & Noble
- 17. Republic Bank

Retail

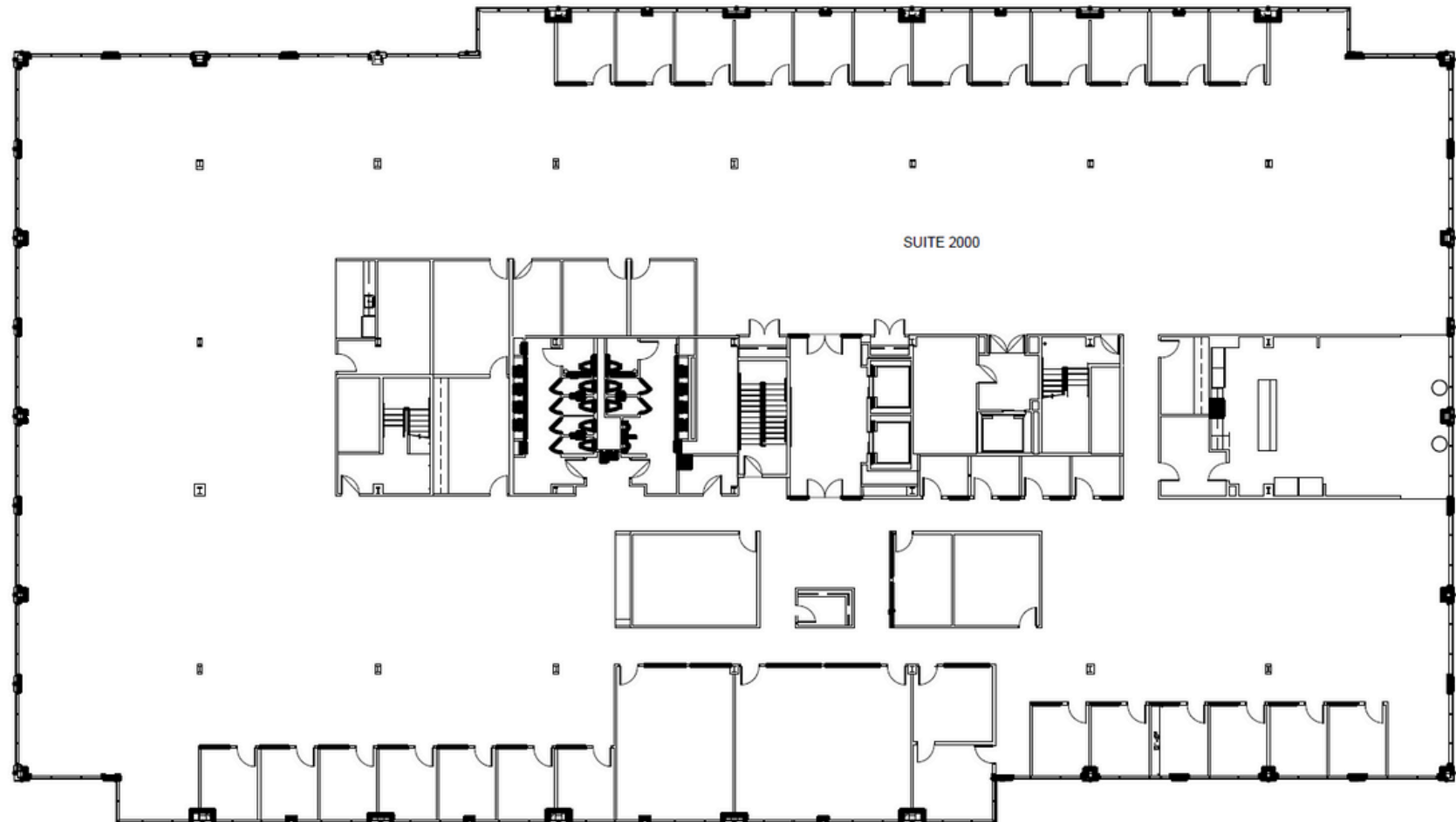
- 19. Highland Cleaners
- 20. Kroger
- 21. UPS Store
- 22. Feeders Supply

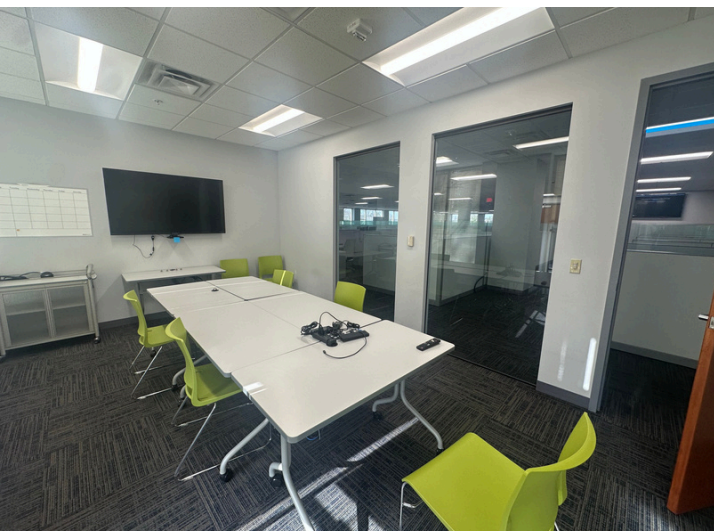
Other

- 2. Norton Brownsboro Hospital
- 11. Hilton Garden Inn
- 24. Louisville Sports Academy

AREA AMENITIES

2ND FLOOR PLAN





CONTACT INFORMATION

EP SCHERER

Senior Director

epscherer@commercialkentucky.com

+1 502 719 3234



©2025 Cushman & Wakefield. All rights reserved. The information contained in this communication is strictly confidential. This information has been obtained from sources believed to be reliable but has not been verified. NO WARRANTY OR REPRESENTATION, EXPRESS OR IMPLIED, IS MADE AS TO THE CONDITION OF THE PROPERTY (OR PROPERTIES) REFERENCED HEREIN OR AS TO THE ACCURACY OR COMPLETENESS OF THE INFORMATION CONTAINED HEREIN, AND SAME IS SUBMITTED SUBJECT TO ERRORS, OMISSIONS, CHANGE OF PRICE, RENTAL OR OTHER CONDITIONS, WITHDRAWAL WITHOUT NOTICE, AND TO ANY SPECIAL LISTING CONDITIONS IMPOSED BY THE PROPERTY OWNER(S). ANY PROJECTIONS, OPINIONS OR ESTIMATES ARE SUBJECT TO UNCERTAINTY AND DO NOT SIGNIFY CURRENT OR FUTURE PROPERTY PERFORMANCE.

Independently Owned & Operated / A Member of the Cushman & Wakefield Alliance