

4587

W MCDOWELL RD

PHOENIX, AZ 85035



For Lease
±32,608 SF
Secure Yard

 CUSHMAN &
WAKEFIELD

// PROPERTY FEATURES



±32,608 SF



24' Clear Height



1,200 SF office



Fully secured truck court



Four (4) dock doors



Two (2) grade doors



Evaporative cooling in warehouse



LED lighting in warehouse



ESFR sprinkler system



800 amp, 277/480 V power

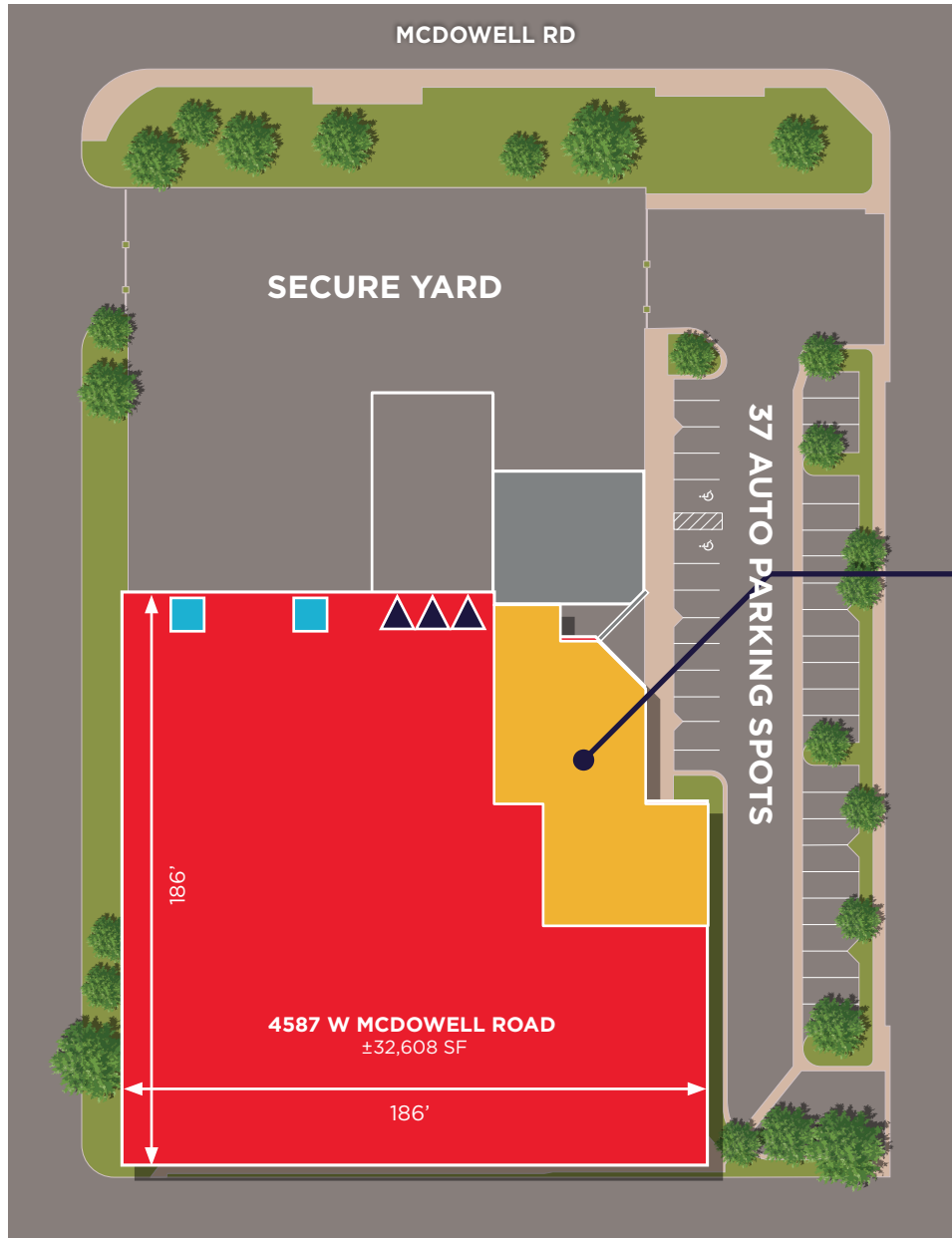


CP/GCP zoning City of Phoenix

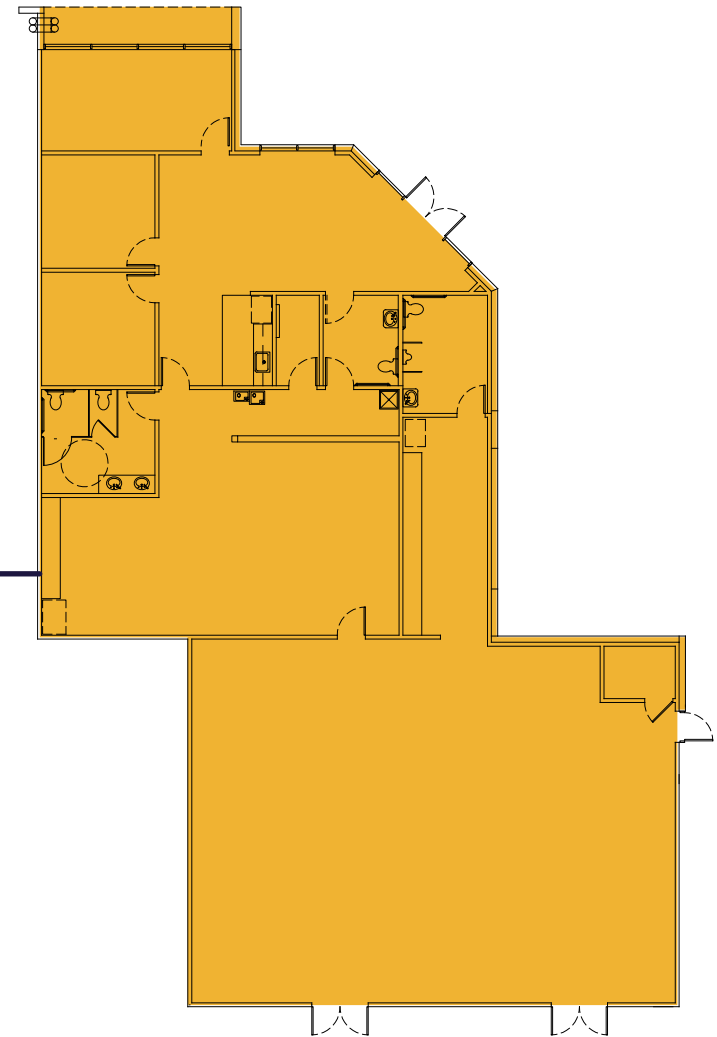
// PROPERTY PHOTOS



// SITE PLAN

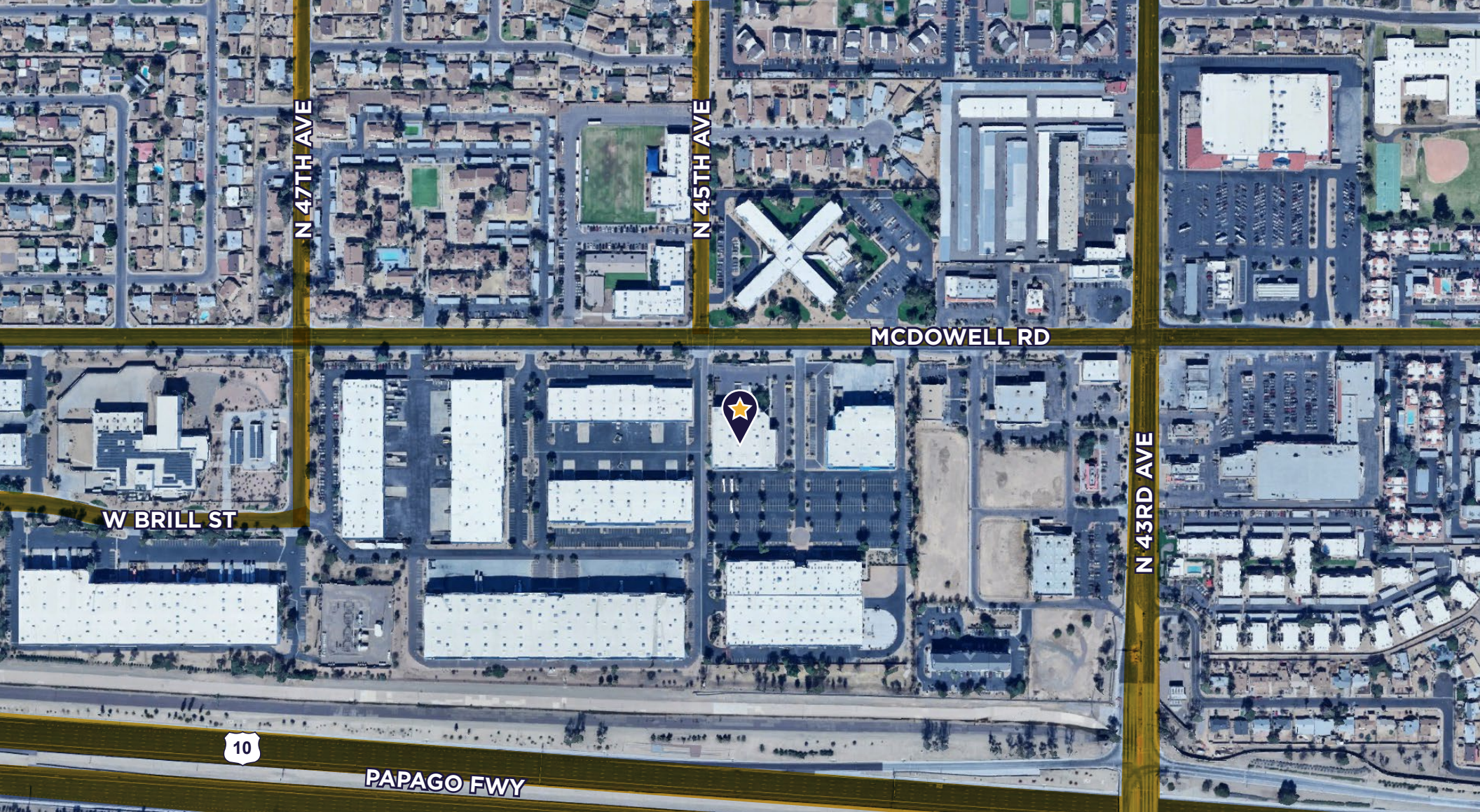


// OFFICE FLOOR PLAN



LEGEND

- ▲ DOCK-HIGH DOORS
- GRADE LEVEL DOORS



CONTACT

PHIL HAENEL

Vice Chair

+1 602 224 4409

phil.haenel@cushwake.com

JUSTIN SMITH

Senior Associate

+1 602 586 5938

justin.p.smith@cushwake.com

2555 E Camelback Rd., Ste 400

Phoenix AZ 85016

+1 602 954 9000

cushmanwakefield.com



©2025 Cushman & Wakefield. All rights reserved. The information contained in this communication is strictly confidential. This information has been obtained from sources believed to be reliable but has not been verified. NO WARRANTY OR REPRESENTATION, EXPRESS OR IMPLIED, IS MADE AS TO THE CONDITION OF THE PROPERTY (OR PROPERTIES) REFERENCED HEREIN OR AS TO THE ACCURACY OR COMPLETENESS OF THE INFORMATION CONTAINED HEREIN, AND SAME IS SUBMITTED SUBJECT TO ERRORS, OMISSIONS, CHANGE OF PRICE, RENTAL OR OTHER CONDITIONS, WITHDRAWAL WITHOUT NOTICE, AND TO ANY SPECIAL LISTING CONDITIONS IMPOSED BY THE PROPERTY OWNER(S). ANY PROJECTIONS, OPINIONS OR ESTIMATES ARE SUBJECT TO UNCERTAINTY AND DO NOT SIGNIFY CURRENT OR FUTURE PROPERTY PERFORMANCE.