

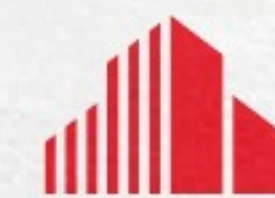
+/- 28,000 SF

INDUSTRIAL WAREHOUSE

AVAILABLE FOR SUBLEASE

204 CHIMNEY ROCK ROAD,

GREENSBORO NC 27409



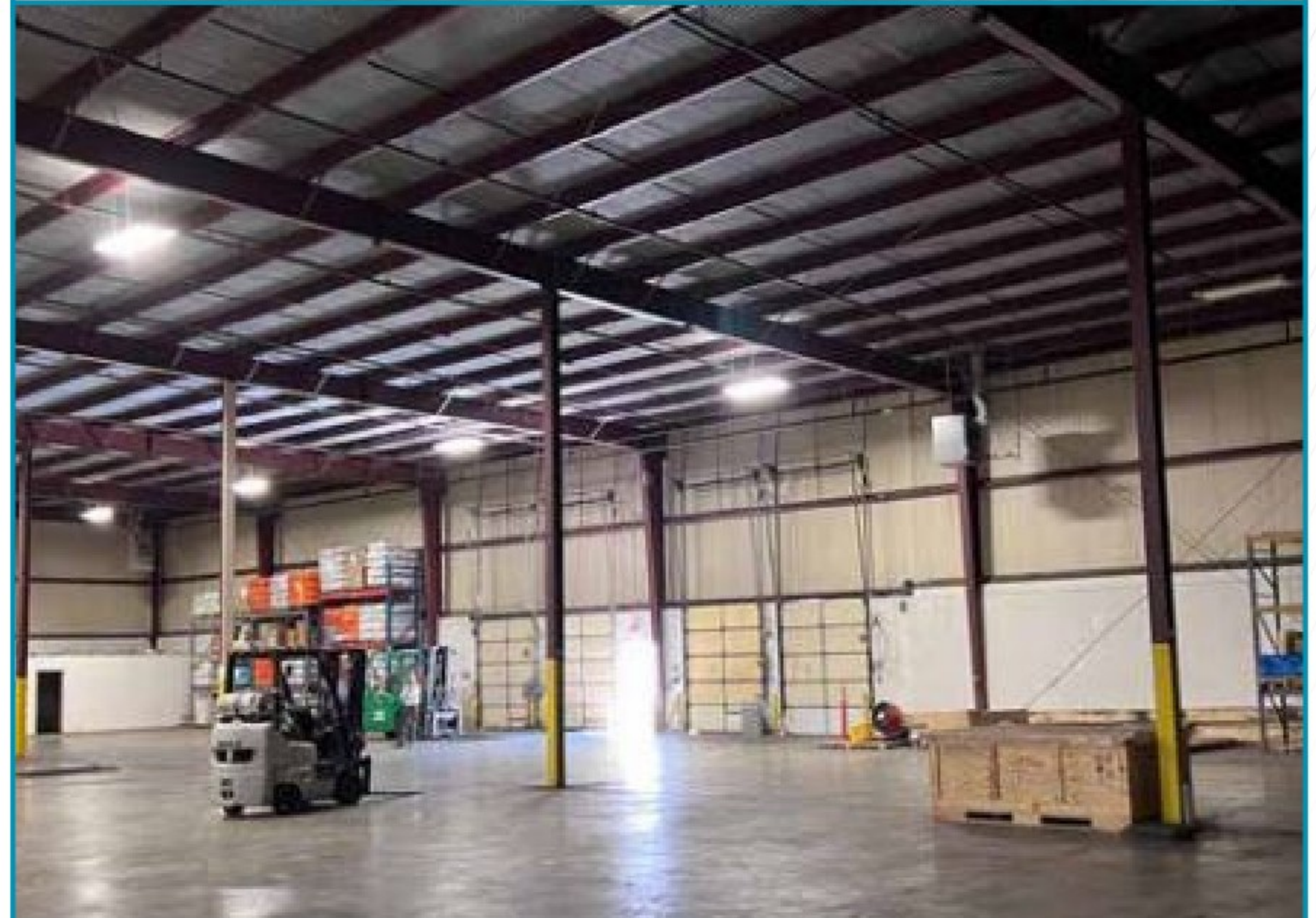
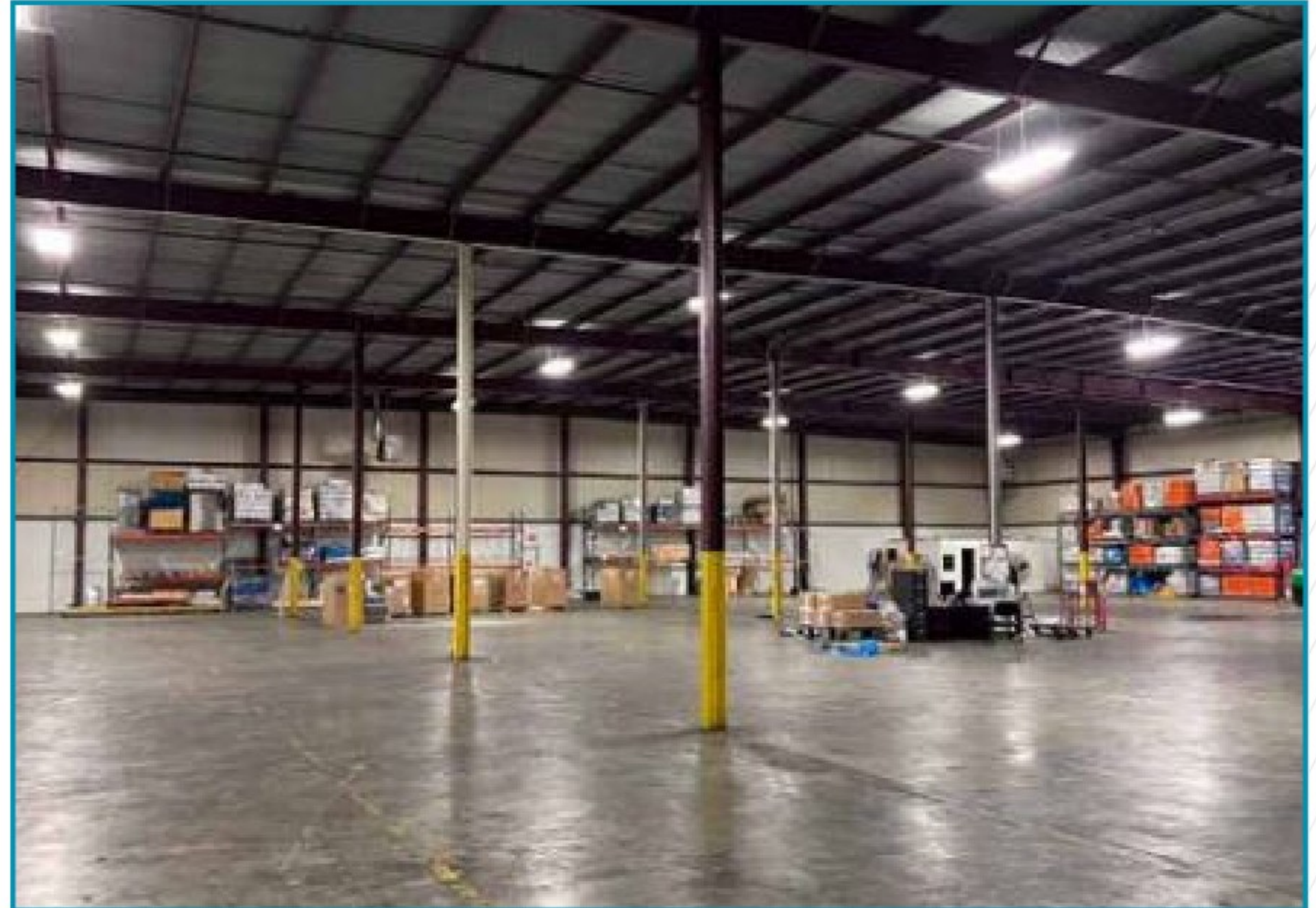
CUSHMAN &  
WAKEFIELD

# 28,000 SF

## INDUSTRIAL WAREHOUSE

204 CHIMNEY ROCK ROAD, GREENSBORO NC 27409

Total Size:	+/- 28,000
Dock High Doors	Four (4) 8' x 10' with mechanical levers
Clear Height	26'
Column Spacing	30' x 40'
Floor Thickness	6"
Sprinkler	Ordinary Hazard Sprinkler System
Year Built	1983
Zoning	Light Industrial (LI)
Electrical	480/277V 200A
Gas	Piedmont Natural Gas
Water/Sewer	City of Greensboro
Highway Access	Greensboro Urban Loop I-840 & I-40

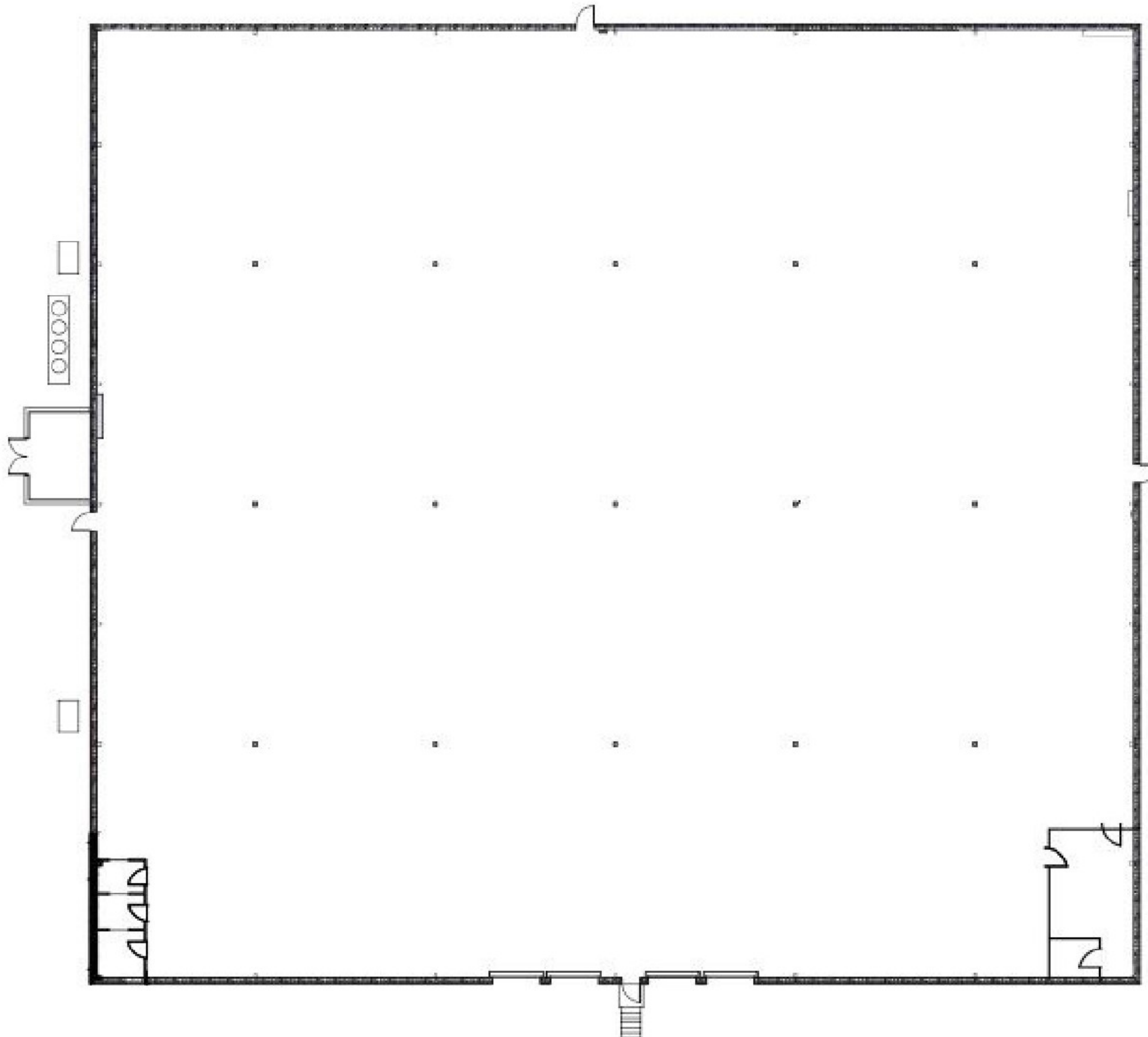


28,000 SF

INDUSTRIAL WAREHOUSE

204 CHIMNEY ROCK ROAD, GREENSBORO NC 27409

FLOOR PLAN

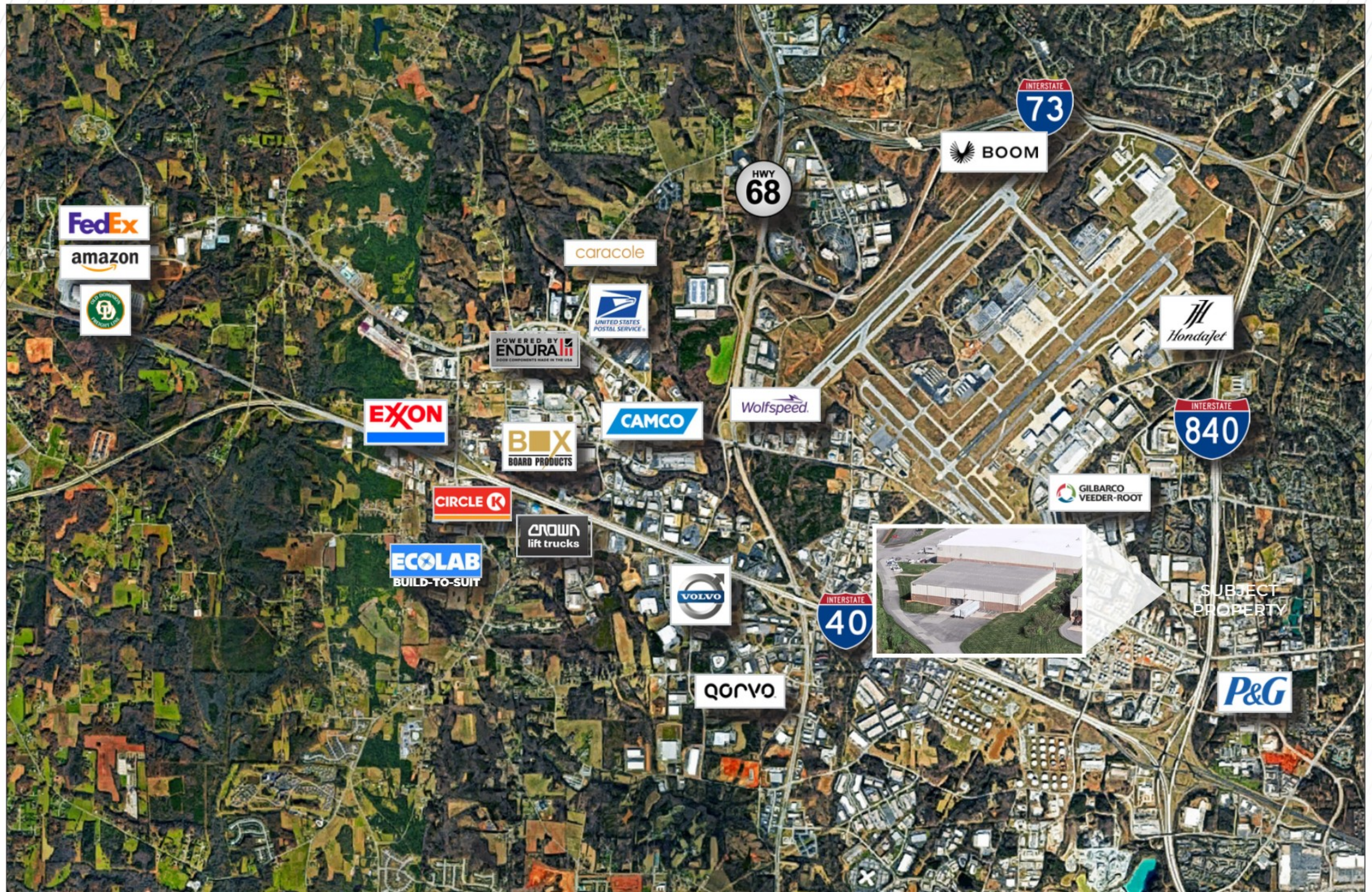


28,000 SF

INDUSTRIAL WAREHOUSE

204 CHIMNEY ROCK ROAD, GREENSBORO NC 27409

LOCATION W/ SURROUNDING BUSINESSES



28,000 SF

INDUSTRIAL WAREHOUSE

204 CHIMNEY ROCK ROAD, GREENSBORO NC 27409

LOCATOR MAP



204 N Chimney Rock Rd  
GREENSBORO, NC 27409

FOR MORE INFORMATION, CONTACT:

JASON OFSANKO  
Executive Director  
+1 336 812 3300  
[jason.ofsanko@cushwake.com](mailto:jason.ofsanko@cushwake.com)

JORDAN MITCHELL  
Senior Director  
+1 336 201 0495  
[jordan.mitchell@cushwake.com](mailto:jordan.mitchell@cushwake.com)

©2024 Cushman & Wakefield. All rights reserved. The material in this presentation has been prepared solely for information purposes, and is strictly confidential. Any disclosure, use, copying or circulation of this presentation (or the information contained within it) is strictly prohibited, unless you have obtained Cushman & Wakefield's prior written consent. The views expressed in this presentation are the views of the author and do not necessarily reflect the views of Cushman & Wakefield. Neither this presentation nor any part of it shall form the basis of, or be relied upon in connection with any offer, or act as an inducement to enter into any contract or commitment whatsoever. NO REPRESENTATION OR WARRANTY IS GIVEN, EXPRESS OR IMPLIED, AS TO THE ACCURACY OF THE INFORMATION CONTAINED WITHIN THIS PRESENTATION, AND CUSHMAN & WAKEFIELD IS UNDER NO OBLIGATION TO SUBSEQUENTLY CORRECT IT IN THE EVENT OF ERRORS.

