

FOR LEASE

INTERWOOD BUSINESS CENTER

14469 HEATHROW FOREST PKWY | HOUSTON, TX 77032



34,800 SF AVAILABLE

**FENCED PARKING/
OUTSIDE STORAGE**

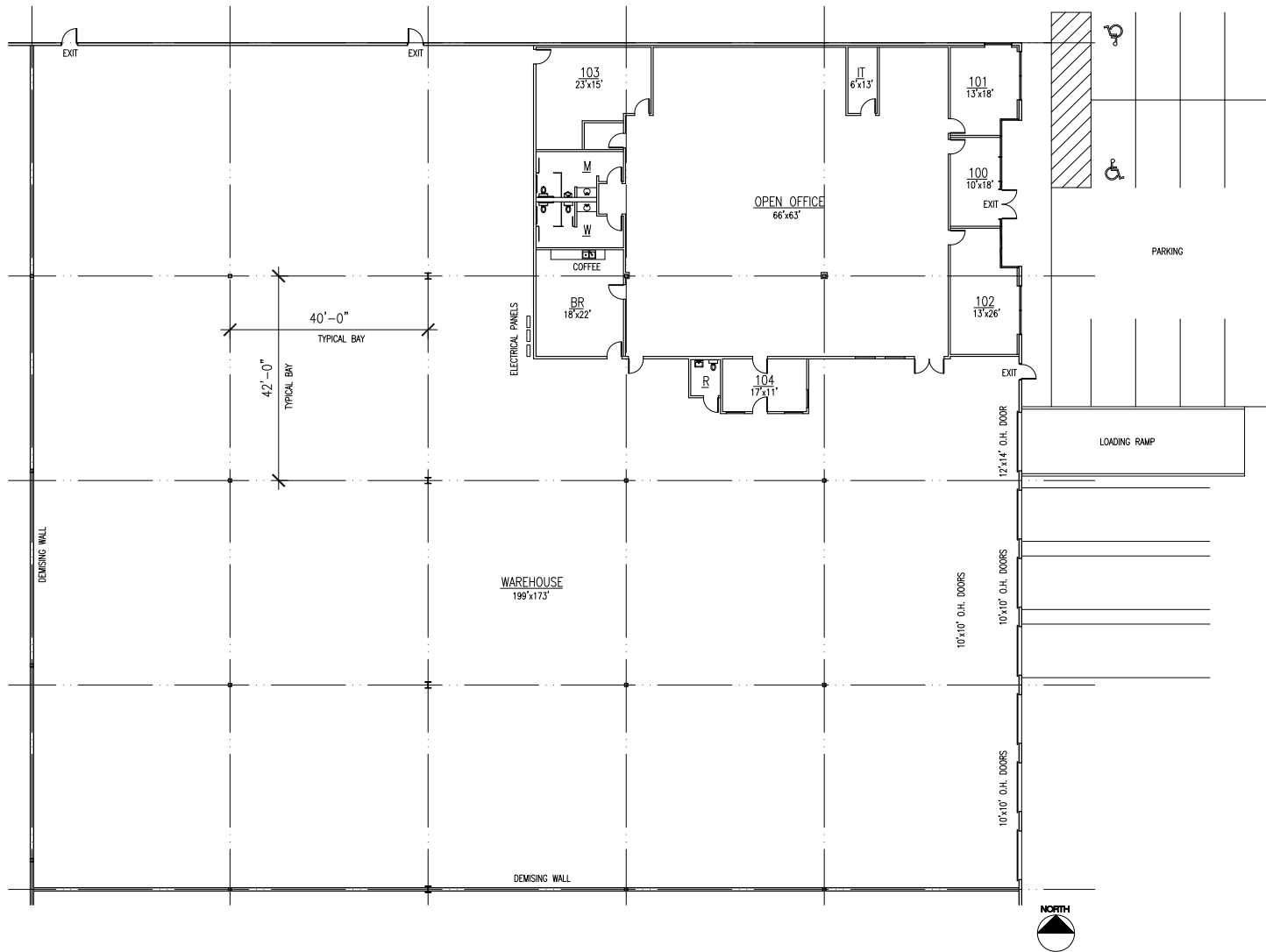
John Kruse
Managing Director
+1 281 688 9234
john.kruse@cushwake.com

Carter Holmes
Senior Associate
+1 281 688 9274
carter.holmes@cushwake.com

1330 Post Oak Blvd.
Houston, Texas 77056
+1 713 877 1700
cushmanwakefield.com



SITE PLAN & FEATURES



BUILDING HIGHLIGHTS

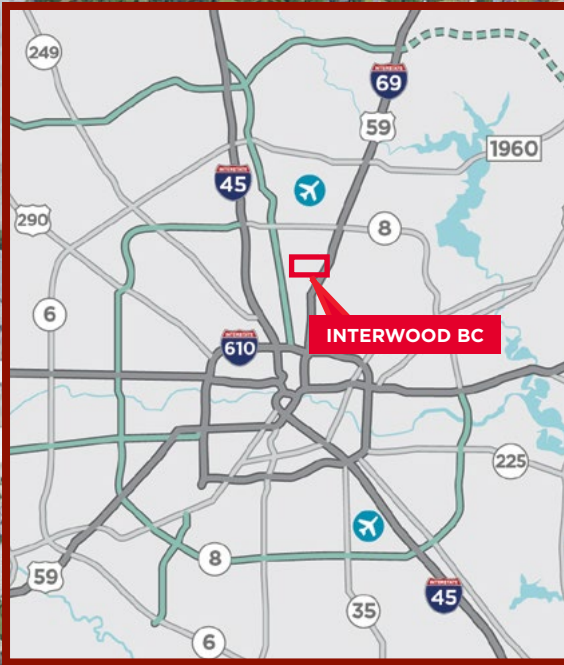
- 34,800 SF Total Available
- 6,650 SF Office
- 28,150 SF Warehouse
- 22' Clear Height
- (6) Dock High Overhead Door
- (1) Oversized Drive-In 12' x 14' Door with Ramp
- Secured Fenced Parking / Outside Storage
- Sprinkler System
- One (1) Mile South of George Bush Intercontinental (IAH) Airport
- Located within Master-Planned & Deed Restricted Interwood Business Park

John Kruse
Managing Director
+1 281 688 9234
john.kruse@cushwake.com

Carter Holmes
Senior Associate
+1 281 688 9274
carter.holmes@cushwake.com

1330 Post Oak Blvd.
Houston, Texas 77056
+1 713 877 1700
cushmanwakefield.com





**INTERWOOD
BUSINESS CENTER**

34,800 SF



AVERITT



HALLIBURTON

N

John Kruse
Managing Director
+1 281 688 9234
john.kruse@cushwake.com

Carter Holmes
Senior Associate
+1 281 688 9274
carter.holmes@cushwake.com

1330 Post Oak Blvd.
Houston, Texas 77056
+1 713 877 1700
cushmanwakefield.com



©2024 Cushman & Wakefield. All rights reserved. The information contained in this communication is strictly confidential. This information has been obtained from sources believed to be reliable but has not been verified. NO WARRANTY OR REPRESENTATION, EXPRESS OR IMPLIED, IS MADE AS TO THE CONDITION OF THE PROPERTY (OR PROPERTIES) REFERENCED HEREIN OR AS TO THE ACCURACY OR COMPLETENESS OF THE INFORMATION CONTAINED HEREIN, AND SAME IS SUBMITTED SUBJECT TO ERRORS, OMISSIONS, CHANGE OF PRICE, RENTAL OR OTHER CONDITIONS, WITHDRAWAL WITHOUT NOTICE, AND TO ANY SPECIAL LISTING CONDITIONS IMPOSED BY THE PROPERTY OWNER(S). ANY PROJECTIONS, OPINIONS OR ESTIMATES ARE SUBJECT TO UNCERTAINTY AND DO NOT SIGNIFY CURRENT OR FUTURE PROPERTY PERFORMANCE.