

OAK CREEK PLAZA

3107 OAK CREEK DRIVE,
AUSTIN, TX 78727



KEVIN GRANGER

Executive Managing Director



BRIAN LIVERMAN

Executive Director



HOLMES ONWUKAIFE

Senior Associate

BUILDING INFORMATION

PROPERTY AVAILABILITY:

- 2-Story LEED Design & Construction
- Class “A” Environmentally Friendly Finishes
- Verdant Landscaping with Park-Like Atmosphere
- Visibility from MoPac Expressway
- Bike Storage and Men’s & Women’s Showers
- 4:1000 Parking, Including Covered Parking Garage with Direct Lobby Access

Up to
6,096 RSF AVAILABLE
Ready for Office Tenants

PROPERTY DESCRIPTION:

New LEED Gold Pre-certified building in Austin’s Far Northwest Submarket. It is conveniently located one block north of MoPac & Parmer Lane at the corner of MoPac and Oak Creek Drive. The building provides direct access to the New Toll Roads and Future CapMetro Rail Lines. It is located near the Domain, La Frontera, Dell and National Instruments.

BUILDING



Conveniently located off North Mopac near the Domain and the National Instruments, Apple, IBM and Charles Schwab campuses.

BUILDING AMENITIES



OAK CREEK PLAZA

Garbo's
Sushi Junai 2
Taco Cabana
ThunderCloud
Chick-fil-A
Poke Bowl 2
P. Terry's
Taco Miendo
HEB

St. David's North
Austin Medical Center

Yard House
La Quinta Inn & Suites
Whole Foods Market

Aloft Austin
Second Bar + Kitchen
Archer Austin

Museum of Ice Cream
The Westin Austin
at the Domain

SpringHill Suites
By Marriott
Embassy Suites
By Hilton
Hayat Palace

Lone Star Court

Home Depot

THE DOMAIN

Top Golf

Taquerro Mucho

Element Austin

Hilton Garden Inn

MAJOR AMENITIES



RESTAURANTS



STORES



HOTELS

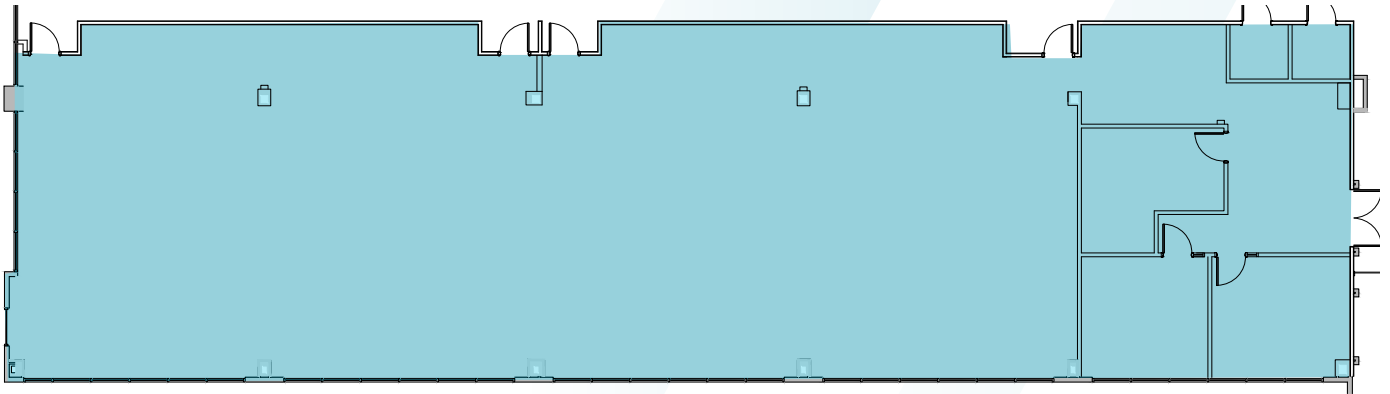


ATTRACTIONS

OFFICE

Suite 230

6,096 RSF



CONTACT C&W LEASING TEAM:



KEVIN GRANGER

Executive Managing Director

Direct: +1 512 814 3403

kevin.granger@cushwake.com



BRIAN LIVERMAN

Executive Director

Direct: +1 512 814 3402

brian.liverman@cushwake.com



HOLMES ONWUKAIFE

Senior Associate

Direct: +1 512 439 6717

holmes.onwukaife@cushwake.com