



Sale Price: \$225,000

±1,208 SF WAREHOUSE CONDO

0836 W 10TH ST.
UNIT 9

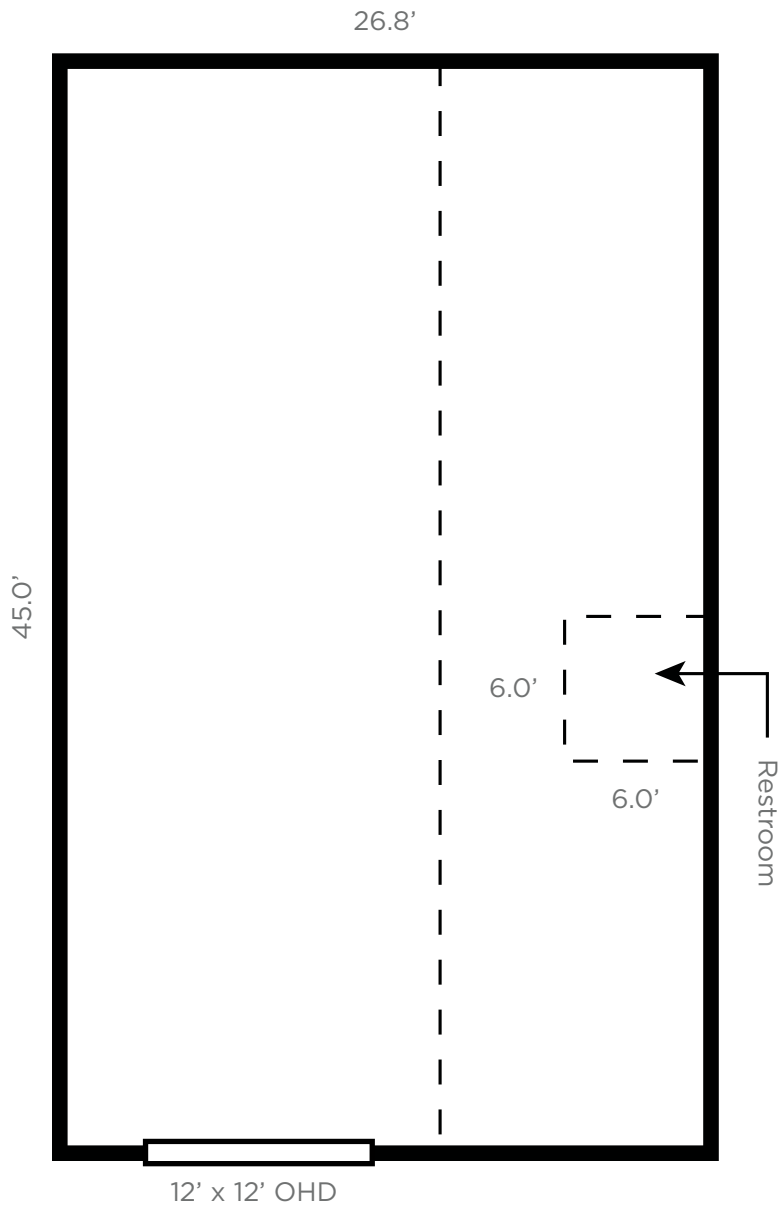
Greeley, Colorado 80634



PROPERTY DETAILS

An excellent opportunity to acquire a highly functional 1,208 SF warehouse condo in West Greeley, strategically located along 10th Street with daily traffic exceeding 30,000 vehicles. Recently upgraded with a new HVAC system in 2023, the unit is an open shell featuring a single bathroom, offering flexibility for a wide range of uses. The Westview Commercial Park is a well-established business hub, home to various small enterprises, including contractors and automotive service providers.

- 12' 10" Clear Height
- 12' x 12' Overhead Door
- Zoning: C-H (Commercial High Intensity)





DRIVE TIMES

71ST AVE.
1.3 Mi | 3 Mins

HWY 34 (SOUTH)
3.7 Mi | 7 Mins

HWY 85
5.9 Mi | 14 Mins

**UNIVERSITY OF
NORTHERN COLORADO**
7.2 Mi | 17 Mins

uhealth

FOR MORE INFORMATION, PLEASE CONTACT:

JARED GOODMAN

Managing Director
+1 970 690 4227

jared.goodman@cushwake.com

ANNE SPRY

Senior Associate
+1 970 690 0167

anne.spry@cushwake.com



©2025 Cushman & Wakefield. All rights reserved. The information contained in this communication is strictly confidential. This information has been obtained from sources believed to be reliable but has not been verified. NO WARRANTY OR REPRESENTATION, EXPRESS OR IMPLIED, IS MADE AS TO THE CONDITION OF THE PROPERTY (OR PROPERTIES) REFERENCED HEREIN OR AS TO THE ACCURACY OR COMPLETENESS OF THE INFORMATION CONTAINED HEREIN, AND SAME IS SUBMITTED SUBJECT TO ERRORS, OMISSIONS, CHANGE OF PRICE, RENTAL OR OTHER CONDITIONS, WITHDRAWAL WITHOUT NOTICE, AND TO ANY SPECIAL LISTING CONDITIONS IMPOSED BY THE PROPERTY OWNER(S). ANY PROJECTIONS, OPINIONS OR ESTIMATES ARE SUBJECT TO UNCERTAINTY AND DO NOT SIGNIFY CURRENT OR FUTURE PROPERTY PERFORMANCE.