



4.73 ACRES FOR SALE

11468 & 11480 DORSETT RD

MARYLAND HEIGHTS, MO

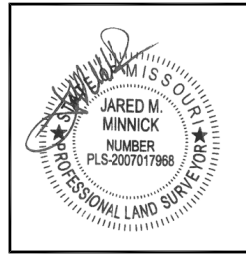


*SALE PRICE \$775,000  
(\$3.76 Per Square Foot)*



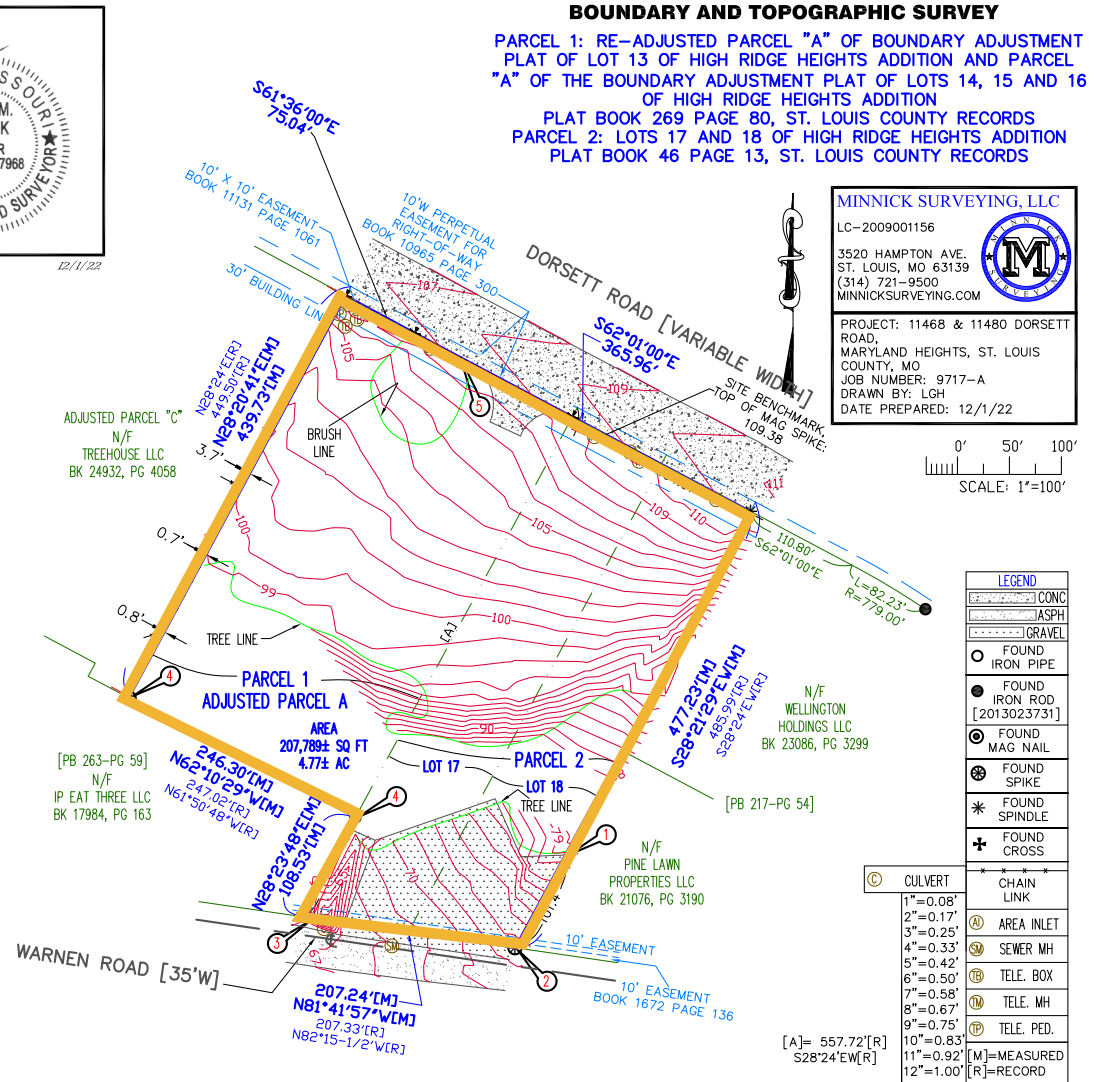
# Property Highlights

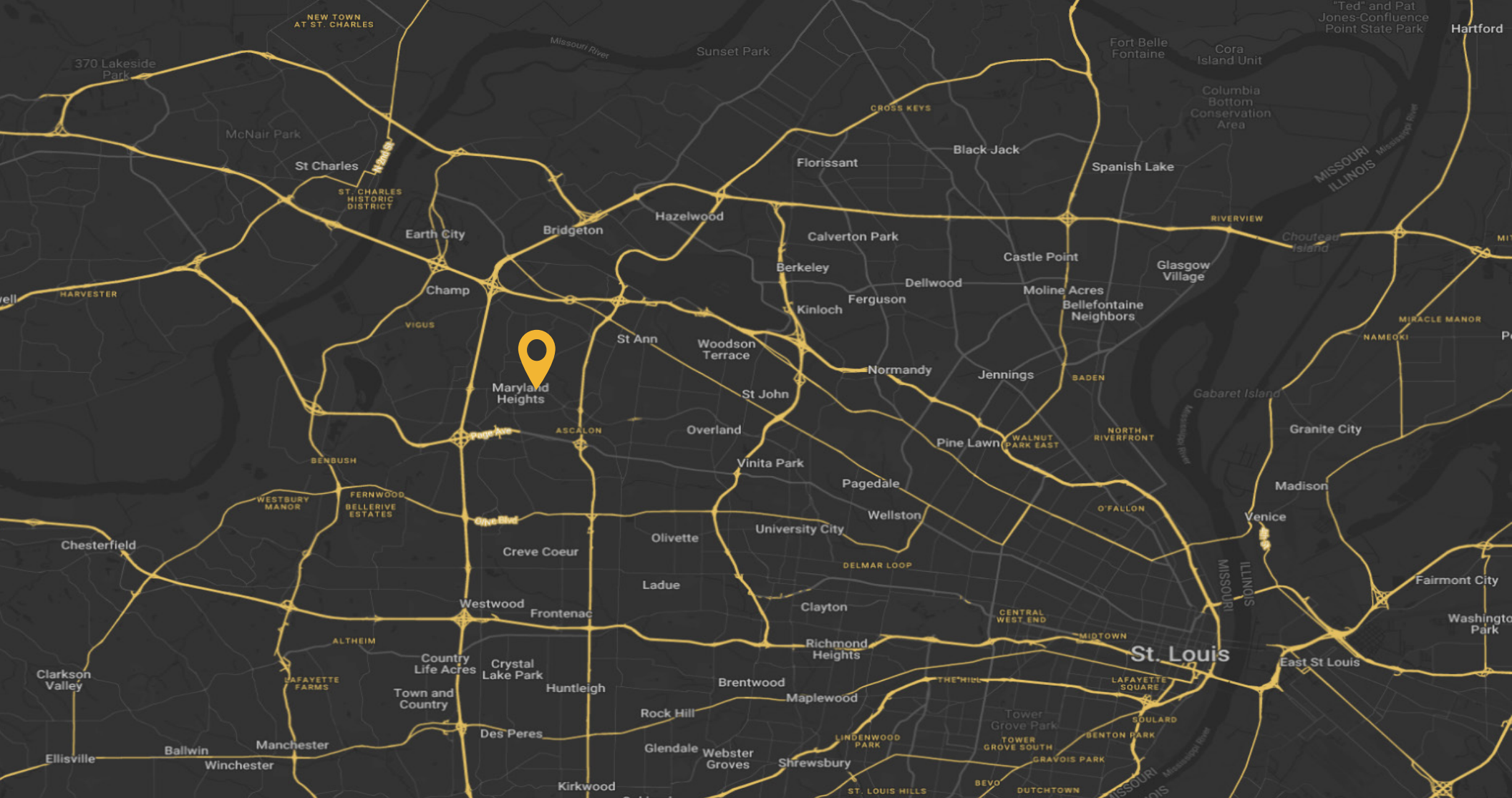
- Zoning: M-1
- 430' of Frontage to Dorsett Road
- Great Central Location
- Easy Access to I-270 7 Hwy 364/Page Avenue



JARED MINNICK  
LAND SURVEYOR  
PLS-2007017968

REVISIONS:  
11/18/22 BOUNDARY  
12/2/22 TOPO





## CONTACT

### KEITH ZIERCHER

*Director*

+1 314 746 0384

keith.ziercher@cushwake.com

7700 Forsyth Blvd.

Suite 1210

+1 314 862 7100

cushmanwakefield.com



©2025 Cushman & Wakefield. All rights reserved. The information contained in this communication is strictly confidential. This information has been obtained from sources believed to be reliable but has not been verified. NO WARRANTY OR REPRESENTATION, EXPRESS OR IMPLIED, IS MADE AS TO THE CONDITION OF THE PROPERTY (OR PROPERTIES) REFERENCED HEREIN OR AS TO THE ACCURACY OR COMPLETENESS OF THE INFORMATION CONTAINED HEREIN, AND SAME IS SUBMITTED SUBJECT TO ERRORS, OMISSIONS, CHANGE OF PRICE, RENTAL OR OTHER CONDITIONS, WITHDRAWAL WITHOUT NOTICE, AND TO ANY SPECIAL LISTING CONDITIONS IMPOSED BY THE PROPERTY OWNER(S). ANY PROJECTIONS, OPINIONS OR ESTIMATES ARE SUBJECT TO UNCERTAINTY AND DO NOT SIGNIFY CURRENT OR FUTURE PROPERTY PERFORMANCE.