



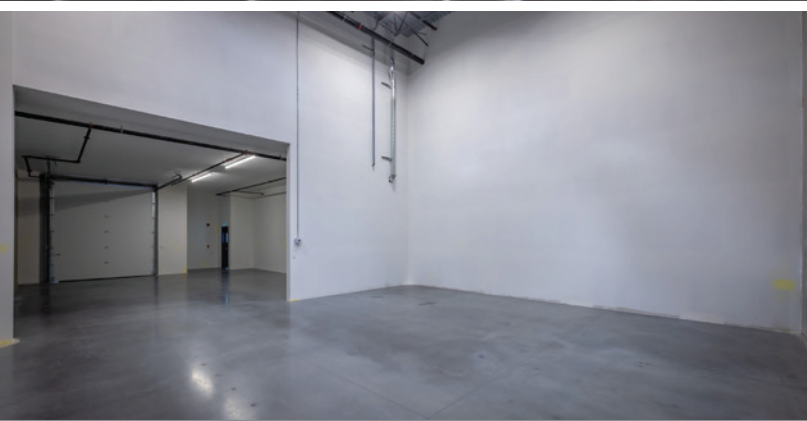
**CUSHMAN &
WAKEFIELD**

FOR LEASE

UNIT 1125

955 SEABORNE AVENUE
PORT COQUITLAM, BC

PIVOTAL 2



Rick Eastman

Personal Real Estate Corporation
Executive Vice President, Industrial
604 640 5863
rick.eastman@cushwake.com

Kevin Volz

Personal Real Estate Corporation
Vice President, Industrial
604 640 5851
kevin.volz@cushwake.com

Alex Eastman

Associate
Industrial Sales & Leasing
+1 604 608 5933
alex.eastman@cushwake.com



**CUSHMAN &
WAKEFIELD**

FOR LEASE

UNIT 1125

**955 SEABORNE AVENUE
PORT COQUITLAM, BC**

LOCATION

The subject property is situated between the western cul-de-sac of Seaborne Avenue and Dominion Avenue just west of Hawkins Street within PIVOTAL 2 in the heart of the Dominion Triangle area. It is within close proximity to the Pitt River Bridge and Golden Ears Bridge to the east, Coast Meridian Overpass to the west and being only minutes from the Cape Horn Interchange, Port Mann Bridge and Highway #1. PIVOTAL 2 offers a superb location for warehouse and distribution, with excellent profile for accessory retail and office. Immediately nearby there are numerous retail amenities at Fremont Village, including Canadian Tire, Walmart, Costco, Save On Foods, HMart, Journey Chrysler and more.

AVAILABLE AREA

Warehouse	2,093 sf
Second Floor Office	1,141 sf
Total Available Area	3,234 sf

ZONING

M-3 (Clean Industrial) zoning allows for uses including clean manufacturing, high tech, commercial indoor recreation, warehousing and select office and retail uses.

LEASE RATE

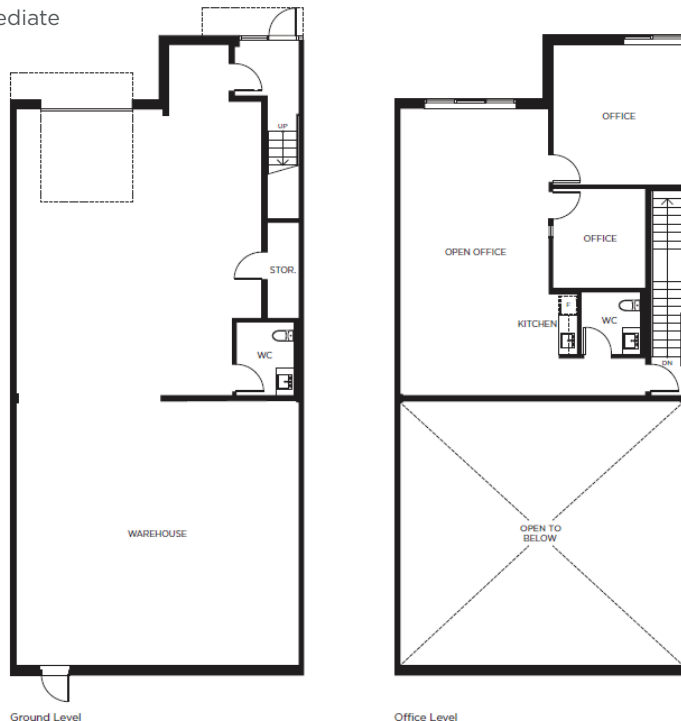
REDUCED \$19.95, psf, net, plus GST

ADDITIONAL RENT (2025)

Estimated at approximately \$8.75 psf, per annum, plus GST

AVAILABILITY

Immediate



PROPERTY FEATURES

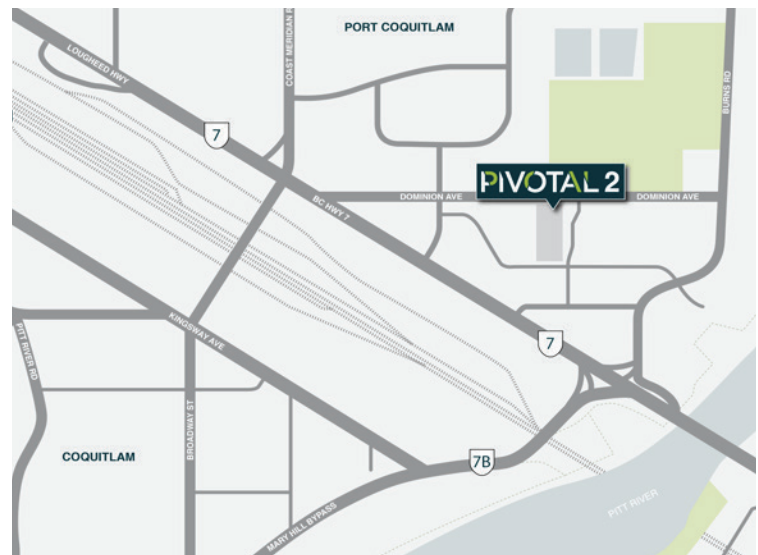
- Quality design & construction by Conwest
- Concrete tilt-up construction
- High end architecturally designed building
- Extensive ground & mezzanine level glazing
- ESFR rated sprinkler system

WAREHOUSE

- 24' ceiling heights
- 500 lbs per square foot floor load rating
- Forced air gas warehouse heater
- Skylight in warehouse
- LED lighting
- 100 amp, 347/600 volt, 3 phase electrical service
- One (1) front 10' x 12' grade level loading door

SECOND FLOOR OFFICE

- HVAC system
- 9' ceiling height under t-bar ceiling
- Two (2) private offices/meeting rooms
- One (1) 2-pc washroom
- Kitchenette with sink and upper & lower cabinetry
- Vinyl & carpet tile flooring
- LED lighting



Rick Eastman

Personal Real Estate Corporation
Executive Vice President, Industrial
604 640 5863
rick.eastman@cushwake.com

Kevin Volz

Personal Real Estate Corporation
Vice President, Industrial
604 640 5851
kevin.volz@cushwake.com

Alex Eastman

Associate
Industrial Sales & Leasing
+1 604 608 5933
alex.eastman@cushwake.com

E.&O.E.: This communication is not intended to cause or induce breach of an existing agency agreement.

The information contained herein was obtained from sources which we deem reliable and, while thought to be correct, is not guaranteed by Cushman & Wakefield ULC (05/23/bg)