

FOR SUBLEASE

**114,498 SF AVAILABLE**



4601 EAST INDIAN TRAIL

**LOUISVILLE, KY 40213**

# PROPERTY HIGHLIGHTS

Sublease space in the south submarket - lease either 69,888 sf or 114,498 sf. Master tenant has moved to the back of the building, but will vacate the entire building. The building offers 3,200 amps, 480 volt, 3 Phase electric. The office area is open and can be office, showroom, or production area.

Building Size: 114,498 sf

Space Available: 114,498 sf

Office Area: 26,438 sf

Clear Height: 23'

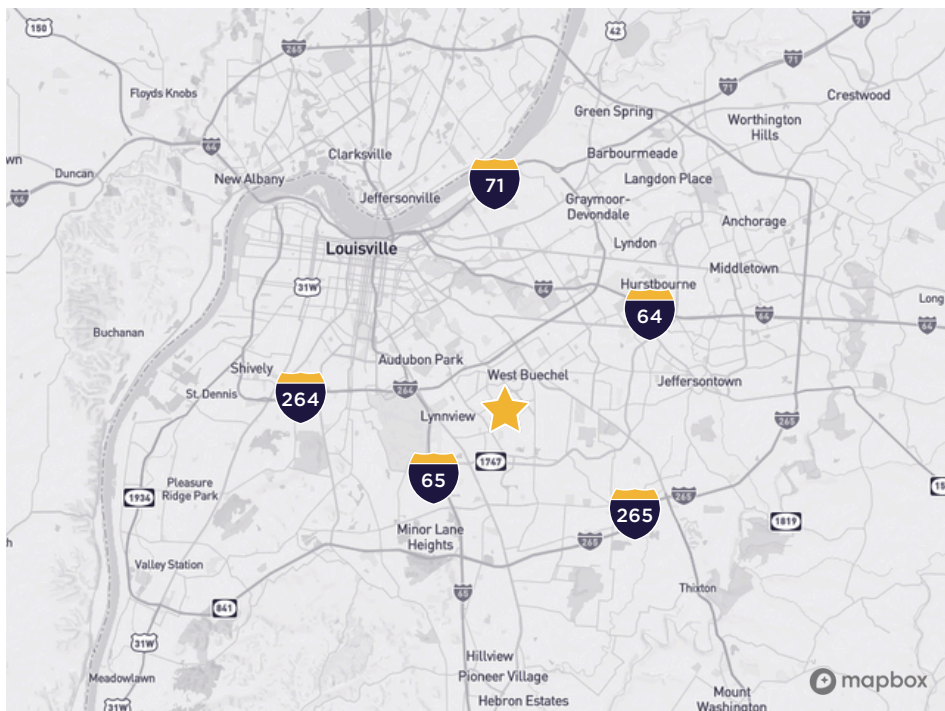
Column Spacing: 32' x 40'

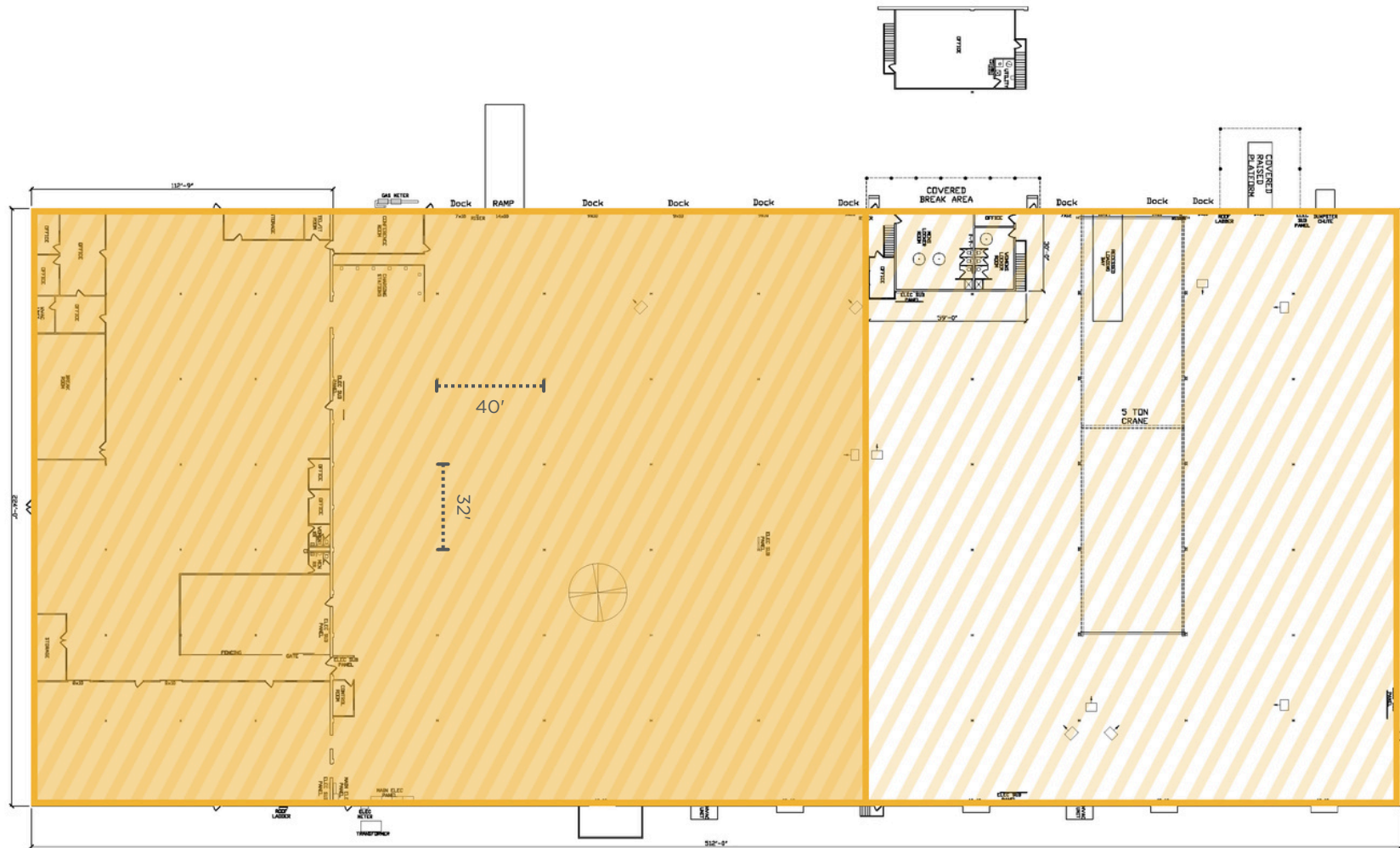
Dock Doors: 10

Drive-In Doors: 8

Lighting: LED

Zoning: M-2





Option 1

Space Available: 69,888 sf

Office Area: 25,088 sf

Dock Doors: 5

Drive-In Doors: 1



Option 2

Space Available: 114,498 sf

Office Area: 26,438 sf

Dock Doors: 10

Drive-In Doors: 8

# FLOOR PLAN

# CONTACT INFORMATION

## **ROBERT WALKER, SIOR, CCIM**

**Senior Director**

[rwalker@commercialkentucky.com](mailto:rwalker@commercialkentucky.com)

+1 502 719 3254

## **JAKE MILLS, SIOR**

**Senior Associate**

[jmills@commercialkentucky.com](mailto:jmills@commercialkentucky.com)

+1 502 719 3252



©2025 Cushman & Wakefield. All rights reserved. The information contained in this communication is strictly confidential. This information has been obtained from sources believed to be reliable but has not been verified. NO WARRANTY OR REPRESENTATION, EXPRESS OR IMPLIED, IS MADE AS TO THE CONDITION OF THE PROPERTY (OR PROPERTIES) REFERENCED HEREIN OR AS TO THE ACCURACY OR COMPLETENESS OF THE INFORMATION CONTAINED HEREIN, AND SAME IS SUBMITTED SUBJECT TO ERRORS, OMISSIONS, CHANGE OF PRICE, RENTAL OR OTHER CONDITIONS, WITHDRAWAL WITHOUT NOTICE, AND TO ANY SPECIAL LISTING CONDITIONS IMPOSED BY THE PROPERTY OWNER(S). ANY PROJECTIONS, OPINIONS OR ESTIMATES ARE SUBJECT TO UNCERTAINTY AND DO NOT SIGNIFY CURRENT OR FUTURE PROPERTY PERFORMANCE.

Independently Owned & Operated / A Member of the Cushman & Wakefield Alliance