



CUSHMAN &  
WAKEFIELD



FOR SUBLEASE

2655

North Sheridan Way

Mississauga, ON

# PROPERTY HIGHLIGHTS

- Built out with a boardroom, meeting room, private office, and open area seating
- Quick access to QEW, steps to public transit
- Building Amenities: Fitness facility, tenant lounge, underground/surface parking
- Wide variety of restaurants, hotels, and fitness centres in the immediate area

## PROPERTY DETAILS



Availability: Suite 290 | 3,105 SF



Occupancy: Immediately



Net Rent: Negotiable (Call Listing Agent)



Sublease Term: Aug. 14, 2027



Additional Rent: \$20.72



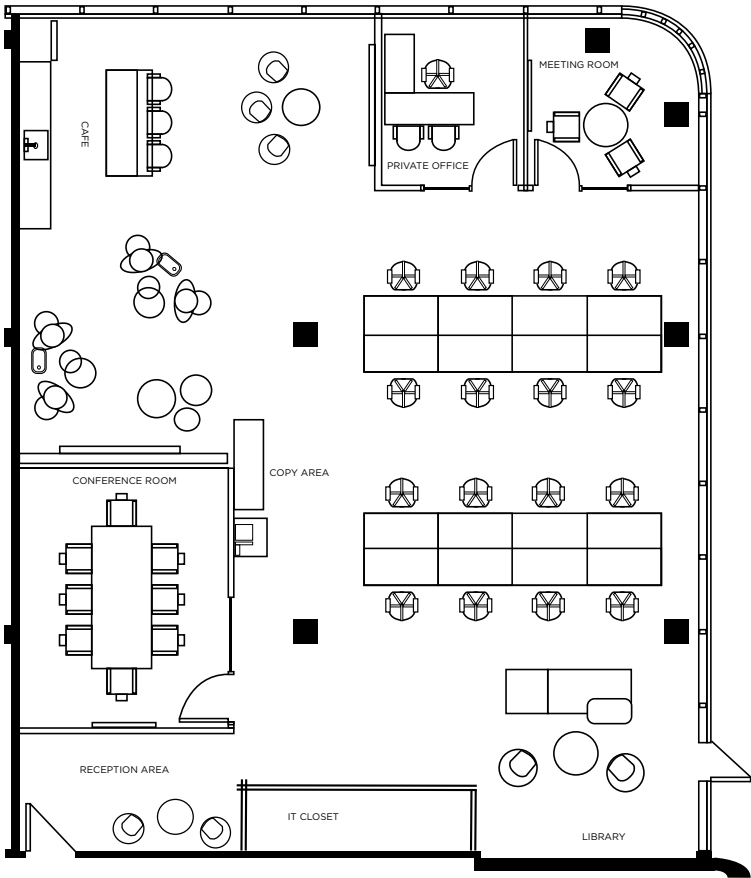
# PROPERTY PHOTOS



# PROPERTY PHOTOS



FLOOR PLAN



AERIAL VIEW





## FOR MORE INFORMATION, PLEASE CONTACT

### **CRAIG TRENHOLM**

Senior Vice President

T: +1 905 501 6483

M: +1 416 371 1860

[craig.trenholm@cushwake.com](mailto:craig.trenholm@cushwake.com)

### **STEVEN SOTIROFF**

Associate

M: +1 647 580 5030

[steven.sotiroff@cushwake.com](mailto:steven.sotiroff@cushwake.com)

### **FAY GOVEAS**

Vice President | Broker

T: +1 905 501 6482

M: +1 647 880 8083

[fay.goveas@cushwake.com](mailto:fay.goveas@cushwake.com)

### **KY VLADYMYRENKO**

Client Coordinator

T: +1 905 501 6416

M: +1 647 809 4134

[ky.vladymyrenko@cushwake.com](mailto:ky.vladymyrenko@cushwake.com)

©2025 Cushman & Wakefield. All rights reserved. The material in this presentation has been prepared solely for information purposes, and is strictly confidential. Any disclosure, use, copying or circulation of this presentation (or the information contained within it) is strictly prohibited, unless you have obtained Cushman & Wakefield's prior written consent. The views expressed in this presentation are the views of the author and do not necessarily reflect the views of Cushman & Wakefield. Neither this presentation nor any part of it shall form the basis of, or be relied upon in connection with any offer, or act as an inducement to enter into any contract or commitment whatsoever. NO REPRESENTATION OR WARRANTY IS GIVEN, EXPRESS OR IMPLIED, AS TO THE ACCURACY OF THE INFORMATION CONTAINED WITHIN THIS PRESENTATION, AND CUSHMAN & WAKEFIELD IS UNDER NO OBLIGATION TO SUBSEQUENTLY CORRECT IT IN THE EVENT OF ERRORS.



**CUSHMAN &  
WAKEFIELD**