

# OFFICE BUILDING FOR SALE IN FISHER BRANCH



OFFICE FOR SALE  
**21-23 MAIN ST, FISHER BRANCH MB**

**James Toker**  
**Associate**

T 204 934 6210

C 204 914 8423

[james.toker@cwstevenson.ca](mailto:james.toker@cwstevenson.ca)







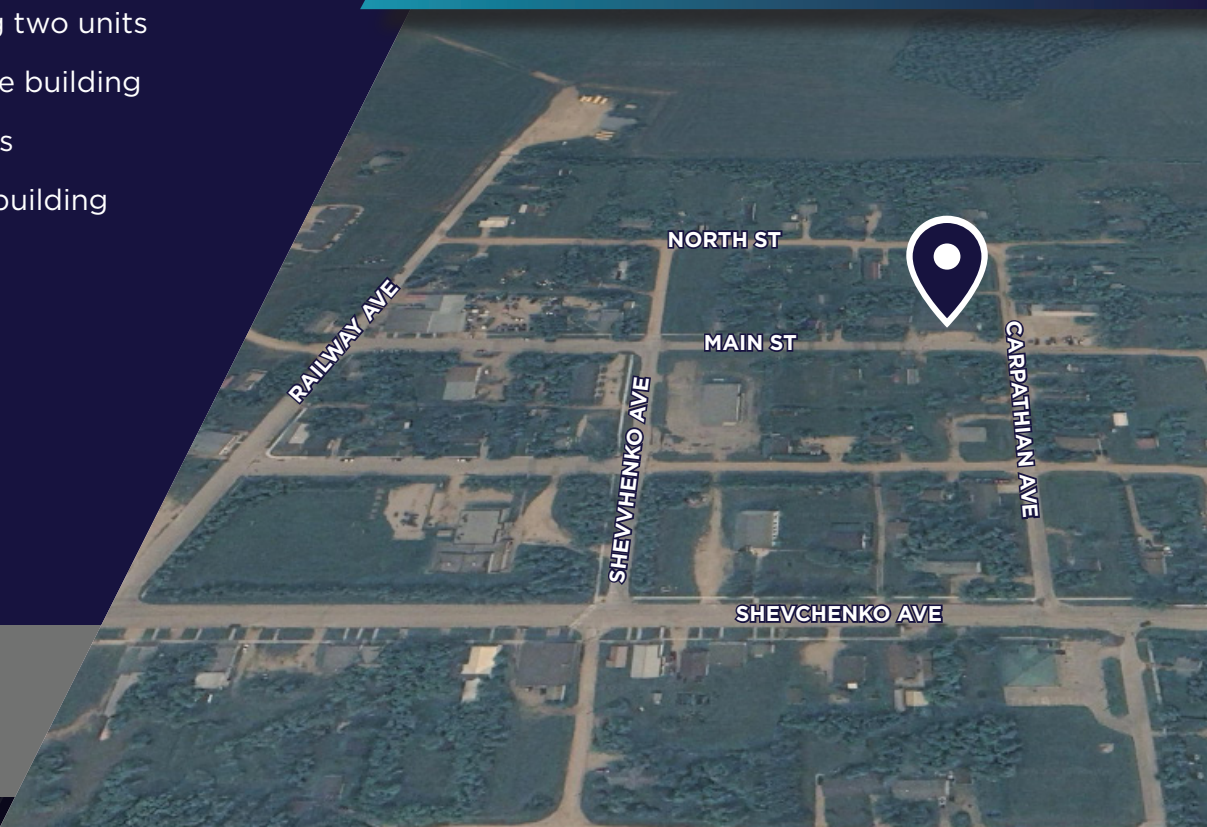
## PROPERTY HIGHLIGHTS

(+/-) 4,368 SF AVAILABLE

- Well maintained single story office building featuring two units
- Potential to lease out both units or owner-occupy the building
- Nicely improved and maintained office improvements
- Ample parking both at the front and the rear of the building
- Unit 1 features 5 exam rooms, 1 storage room, and reception area
- Unit 2 features a large communal work area and 8 private offices
- Common area space includes a large boardroom, kitchenette and washrooms
- Rear entrance with access to staff parking

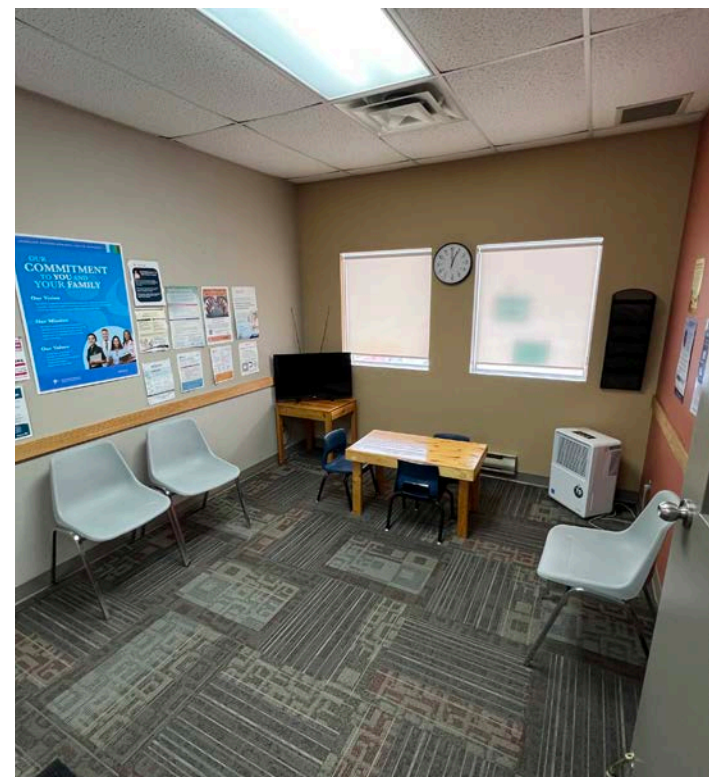
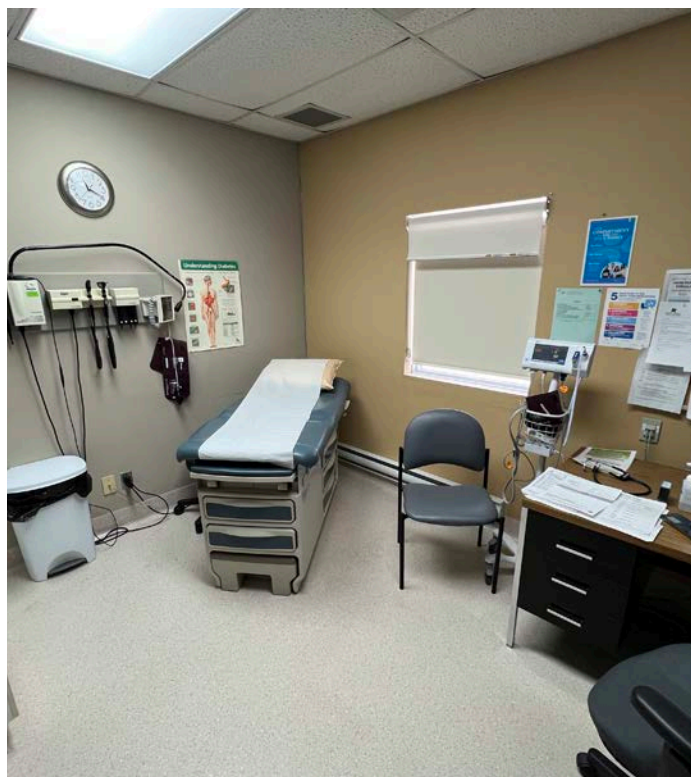
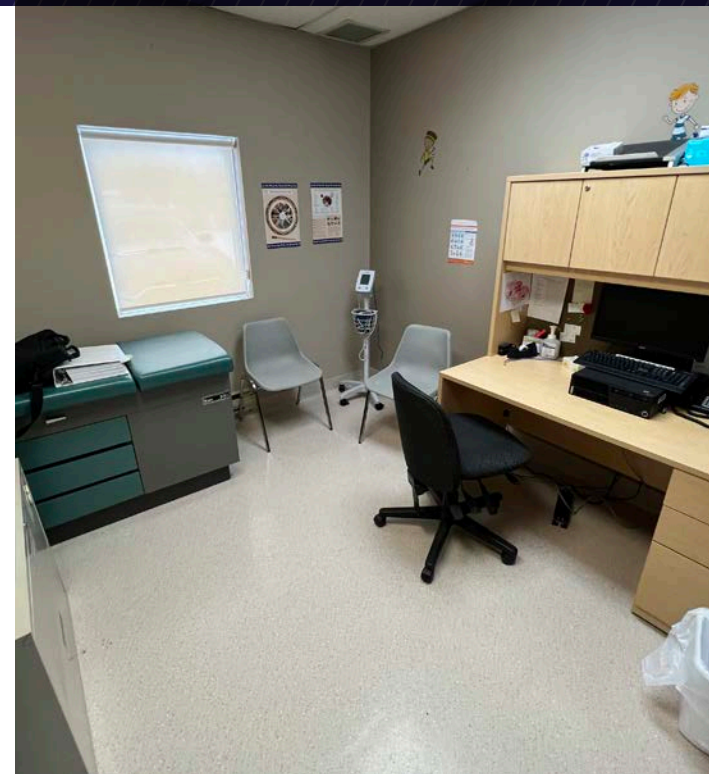
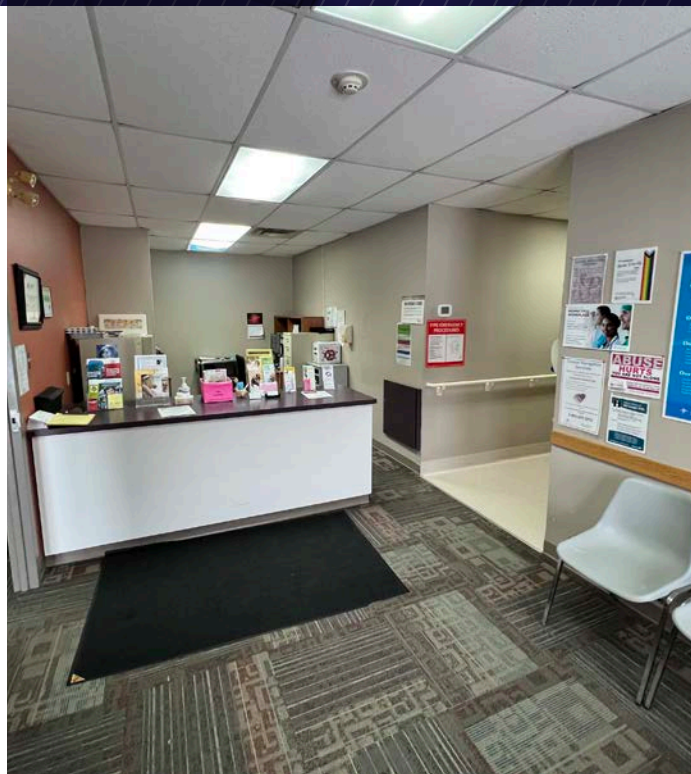
**SALE PRICE:** \$375,000

**PROPERTY TAX:** TBD



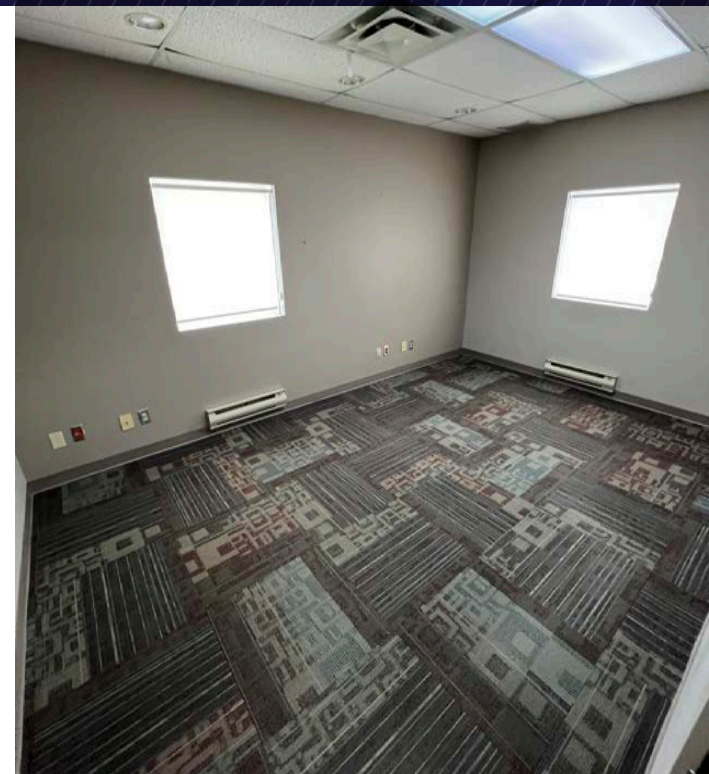


## UNIT 1





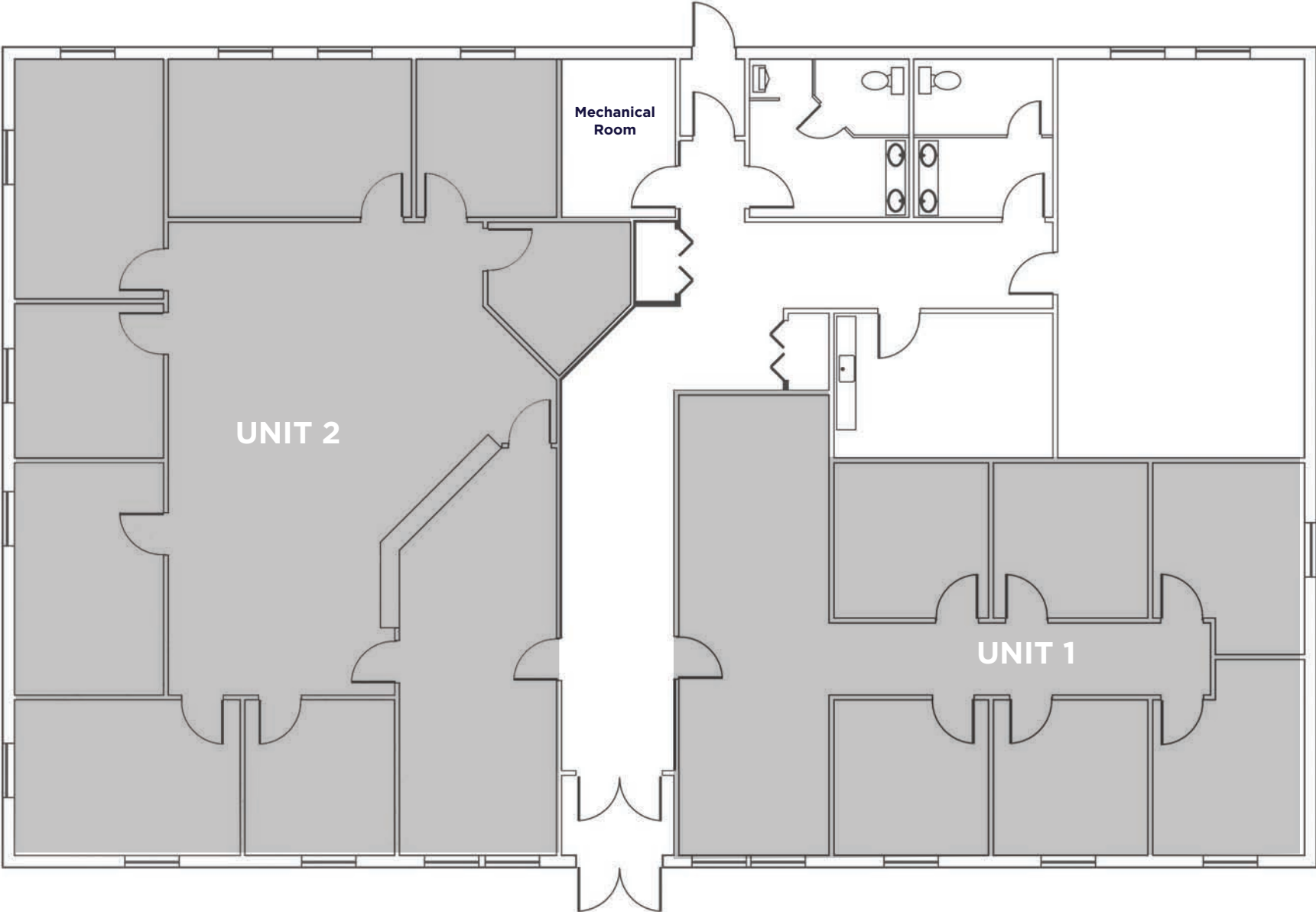
UNIT 2



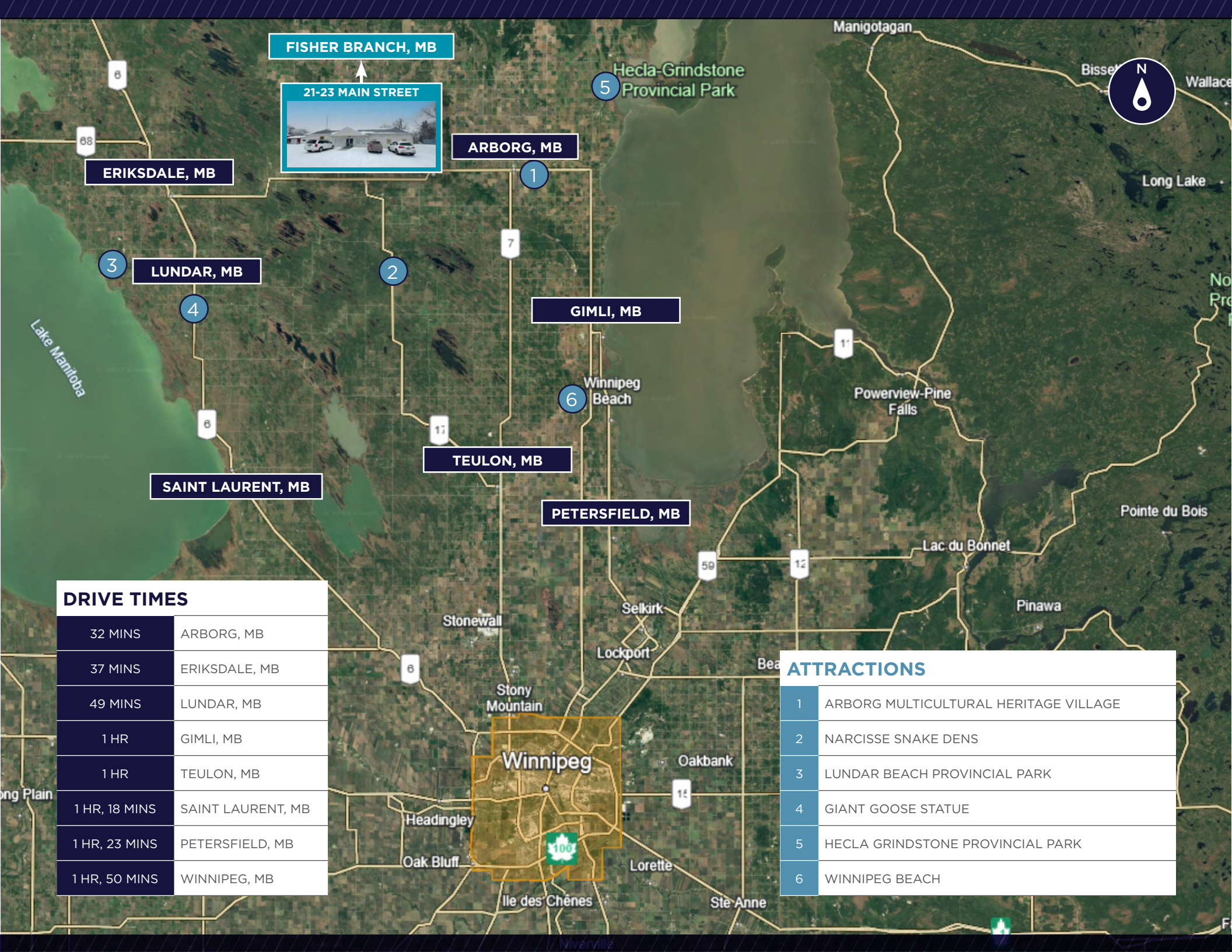
COMMON AREA



FLOOR PLAN







FISHER BRANCH, MB

21-23 MAIN STREET

ARBORG, MB

ERIKSDALE, MB

LUNDAR, MB

GIMLI, MB

TEULON, MB

SAINT LAURENT, MB

PETERSFIELD, MB

DRIVE TIMES

32 MINS	ARBORG, MB
37 MINS	ERIKSDALE, MB
49 MINS	LUNDAR, MB
1 HR	GIMLI, MB
1 HR	TEULON, MB
1 HR, 18 MINS	SAINT LAURENT, MB
1 HR, 23 MINS	PETERSFIELD, MB
1 HR, 50 MINS	WINNIPEG, MB

ATTRACTIONS	
1	ARBORG MULTICULTURAL HERITAGE VILLAGE
2	NARCISSE SNAKE DENS
3	LUNDAR BEACH PROVINCIAL PARK
4	GIANT GOOSE STATUE
5	HECLA GRINDSTONE PROVINCIAL PARK
6	WINNIPEG BEACH





## CONTACT

**James Toker**  
**Associate**

T 204 934 6210

C 204 914 8423

[james.toker@cwstevenson.ca](mailto:james.toker@cwstevenson.ca)



**CUSHMAN &  
WAKEFIELD**  
Winnipeg

**Stevenson**

Independently Owned and Operated / A Member of the Cushman & Wakefield Alliance ©2025 Cushman & Wakefield. All rights reserved. The information contained in this communication is strictly confidential. This information has been obtained from sources believed to be reliable but has not been verified. NO WARRANTY OR REPRESENTATION, EXPRESS OR IMPLIED, IS MADE AS TO THE CONDITION OF THE PROPERTY (OR PROPERTIES) REFERENCED HEREIN OR AS TO THE ACCURACY OR COMPLETENESS OF THE INFORMATION CONTAINED HEREIN, AND SAME IS SUBMITTED SUBJECT TO ERRORS, OMISSIONS, CHANGE OF PRICE, RENTAL OR OTHER CONDITIONS, WITHDRAWAL WITHOUT NOTICE, AND TO ANY SPECIAL LISTING CONDITIONS IMPOSED BY THE PROPERTY OWNER(S). ANY PROJECTIONS, OPINIONS OR ESTIMATES ARE SUBJECT TO UNCERTAINTY AND DO NOT SIGNIFY CURRENT OR FUTURE PROPERTY PERFORMANCE.