

1065
COMSTOCK ST.

SANTA CLARA, CA

For Sale or Lease
±11,580 SF



CUSHMAN &
WAKEFIELD

// PROPERTY HIGHLIGHTS



±11,580 SF



±0.69 ACRES



FREESTANDING BUILDING



POTENTIAL FOR FENCED YARD



**SINGLE STORY MANUFACTURING
/R&D/ INDUSTRIAL**



100% HVAC



**APPROX. 40% OFFICE,
60% PRODUCTION**



2 GRADE LEVEL DOORS



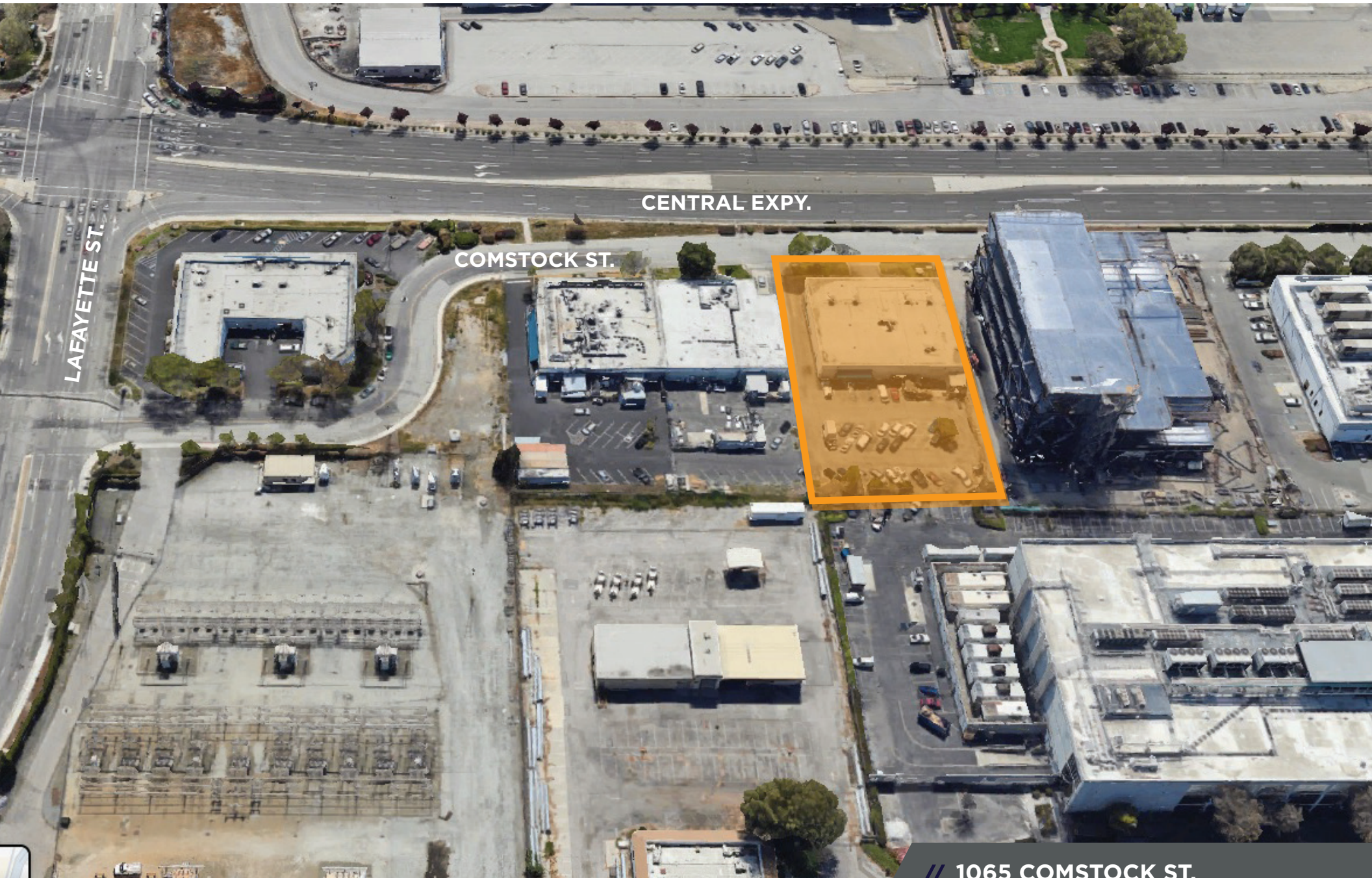
**PROMINENT FRONTAGE
AND SIGNAGE ON
CENTRAL EXPRESSWAY**



3.3/1000 UNSHARED PARKING



// **1065 COMSTOCK ST.**
Santa Clara, CA



CENTRAL EXPY.

COMSTOCK ST.

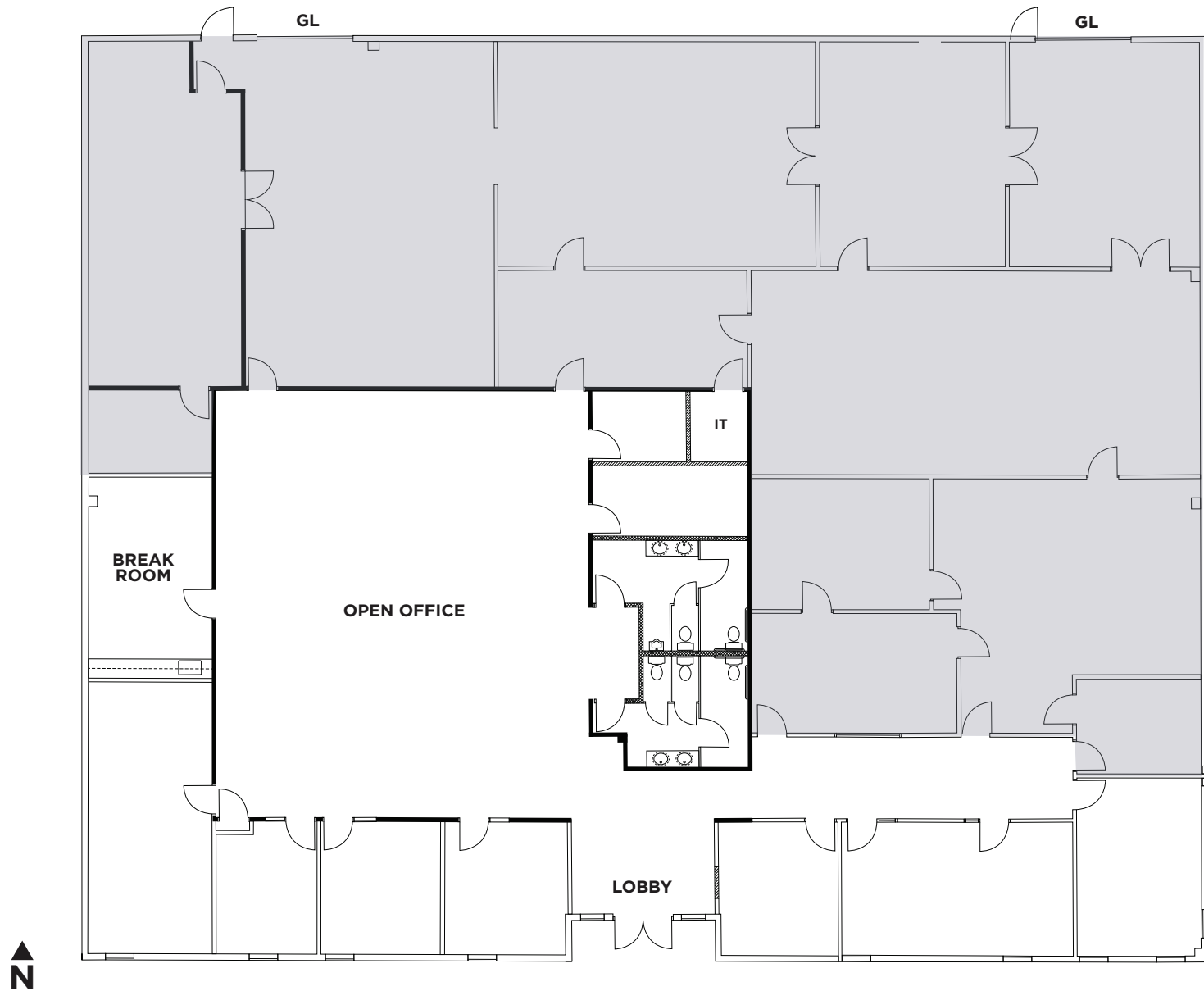
LAFAYETTE ST.

1065 COMSTOCK ST.
Santa Clara, CA

// FLOOR PLAN

■ Production Area

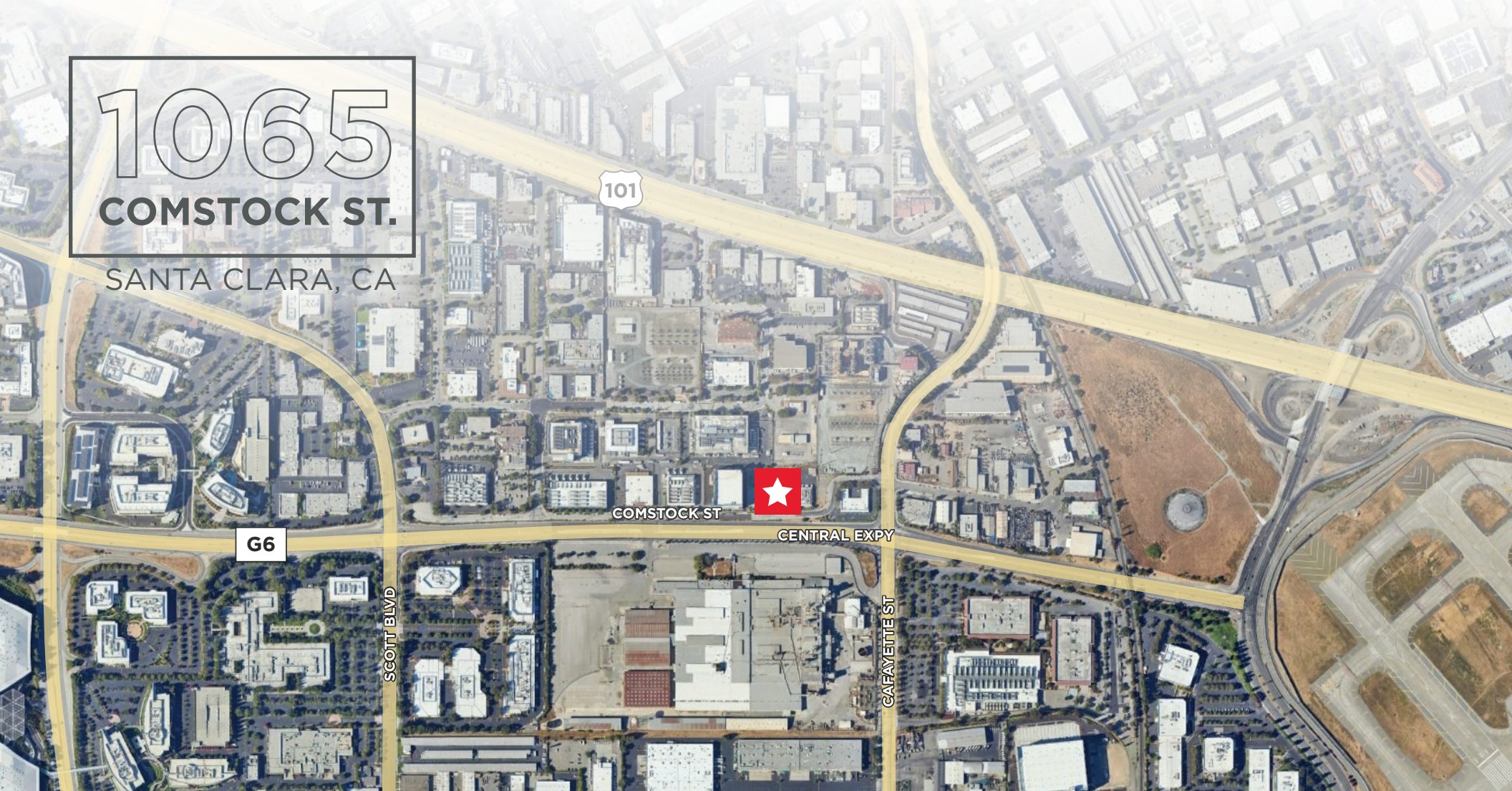
□ Office



1065

COMSTOCK ST.

SANTA CLARA, CA



CONTACT

COLIN FEICHTMEIR
EXECUTIVE DIRECTOR
Mobile: +1 408 203 7735
colin.feichtmeir@cushwake.com
CA License #01298061

300 SANTANA ROW, FIFTH FLOOR
SAN JOSE, CA 95128
www.cushmanwakefield.com



©2025 Cushman & Wakefield. All rights reserved. The information contained in this communication is strictly confidential. This information has been obtained from sources believed to be reliable but has not been verified. NO WARRANTY OR REPRESENTATION, EXPRESS OR IMPLIED, IS MADE AS TO THE CONDITION OF THE PROPERTY (OR PROPERTIES) REFERENCED HEREIN OR AS TO THE ACCURACY OR COMPLETENESS OF THE INFORMATION CONTAINED HEREIN, AND SAME IS SUBMITTED SUBJECT TO ERRORS, OMISSIONS, CHANGE OF PRICE, RENTAL OR OTHER CONDITIONS, WITHDRAWAL WITHOUT NOTICE, AND TO ANY SPECIAL LISTING CONDITIONS IMPOSED BY THE PROPERTY OWNER(S). ANY PROJECTIONS, OPINIONS OR ESTIMATES ARE SUBJECT TO UNCERTAINTY AND DO NOT SIGNIFY CURRENT OR FUTURE PROPERTY PERFORMANCE.