

OFFICE FOR LEASE 229 YONGE STREET



CHARACTER OFFICES
ON THE SUBWAY LINE
2,412 SF TO 9,156 SF AVAILABLE



CLARKE STRUTHERS*
Senior Vice President
416 359 2451
clarke.struthers@cushwake.com

RILEY LITTLEJOHN*
Associate Vice President
416 359 2444
riley.littlejohn@cushwake.com

CUSHMAN & WAKEFIELD ULC, BROKERAGE
161 Bay Street, Suite 1500
Toronto, M5J 2S1
cushmanwakefield.com

OFFICE FOR LEASE

229 YONGE STREET



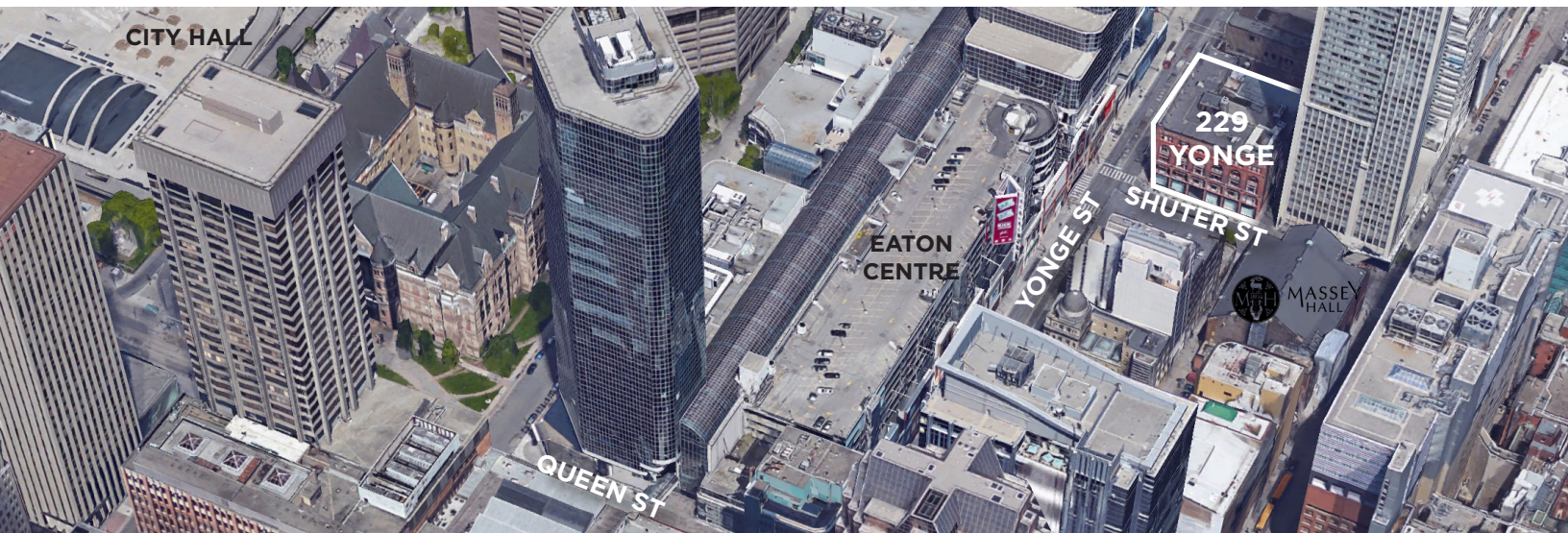
PROPERTY SUMMARY

229 Yonge Street is conveniently located along the Yonge Street corridor.

This fully renovated heritage building has large windows offering great natural light to the desired loft style office environment.

DETAILS

AVAILABLE SPACE:	Suite 300:	8,957 SF
	Suite 400:	9,156 SF
	Former co-working offices with ample private offices. Landlord is open to similar uses and/or providing desired modifications.	
	Suite 500:	3,256 SF
	Ample natural light. A must see opportunity	
	Suite 502:	2,412 SF
	Reception, 12 person meeting room, 6 person meeting room, open area, lunch room and server room	
ASKING RATE:	Call to discuss	
ADDITIONAL RATE:	\$24.50 PSF (in-suite hydro and janitorial included)	
TERM:	3 - 10 Years	



FOR MORE INFORMATION, PLEASE CONTACT:

CLARKE STRUTHERS*
Senior Vice President
416 359 2451
clarke.struthers@cushwake.com

RILEY LITTLEJOHN*
Associate Vice President
416 359 2444
riley.littlejohn@cushwake.com

CUSHMAN & WAKEFIELD ULC, BROKERAGE
161 Bay Street, Suite 1500
Toronto, M5J 2S1
cushmanwakefield.com

Cushman & Wakefield ULC, Brokerage
No warranty or representation, expressed or implied, is made as to the accuracy of the information contained herein, and same is submitted subject to errors, omissions, change of price, rental or other conditions, withdrawal without notice, and to any specific listing condition, imposed by our principals. *Sales Representative

OFFICE FOR LEASE 229 YONGE STREET



PROPERTY PHOTOS



FOR MORE INFORMATION, PLEASE CONTACT:

CLARKE STRUTHERS*

Senior Vice President
416 359 2451
clarke.struthers@cushwake.com

RILEY LITTLEJOHN*

Associate Vice President
416 359 2444
riley.littlejohn@cushwake.com

CUSHMAN & WAKEFIELD ULC, BROKERAGE

161 Bay Street, Suite 1500
Toronto, M5J 2S1
cushmanwakefield.com

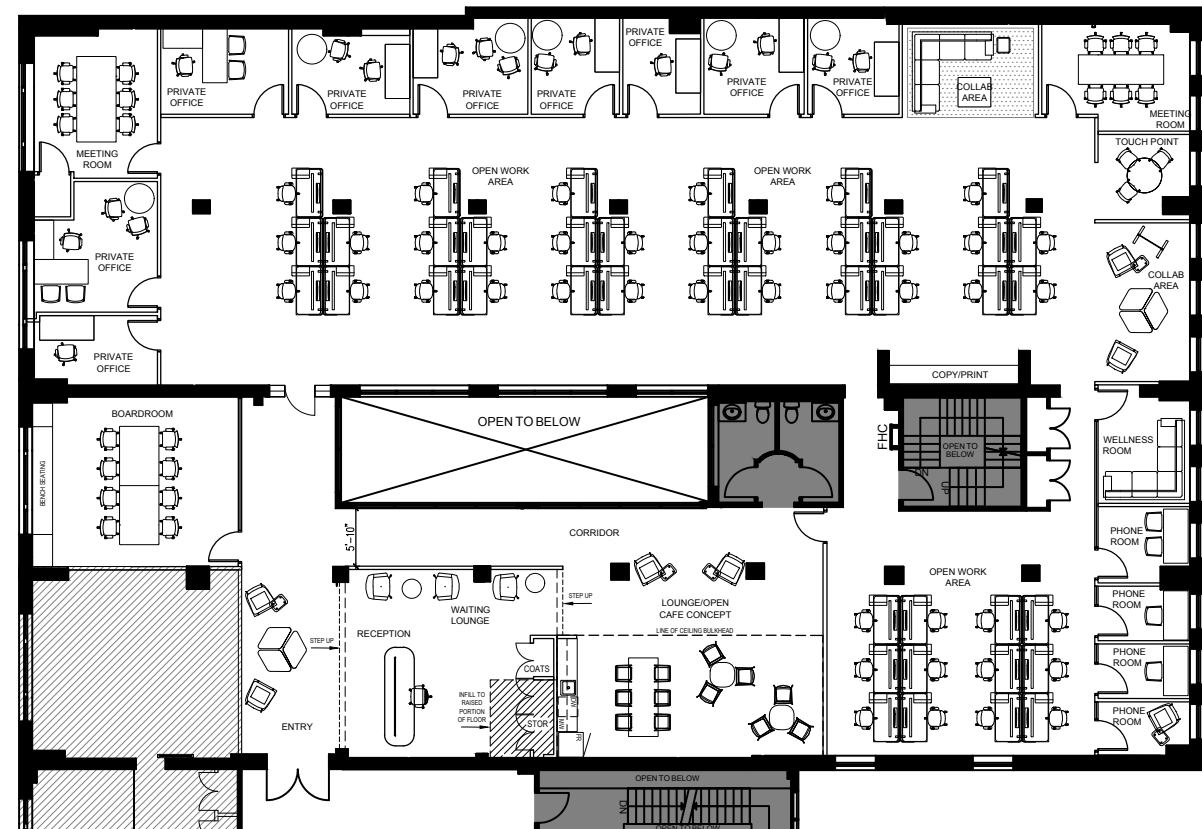
Cushman & Wakefield ULC, Brokerage
No warranty or representation, expressed or implied, is made as to the accuracy of the information contained herein, and same is submitted subject to errors, omissions, change of price, rental or other conditions, withdrawal without notice, and to any specific listing condition, imposed by our principals. *Sales Representative

OFFICE FOR LEASE 229 YONGE STREET



FLOOR PLAN

SUITE 300 - 8,957 SF



FOR MORE INFORMATION, PLEASE CONTACT:

CLARKE STRUTHERS*
Senior Vice President
416 359 2451
clarke.struthers@cushwake.com

RILEY LITTLEJOHN*
Associate Vice President
416 359 2444
riley.littlejohn@cushwake.com

CUSHMAN & WAKEFIELD ULC, BROKERAGE
161 Bay Street, Suite 1500
Toronto, M5J 2S1
cushmanwakefield.com

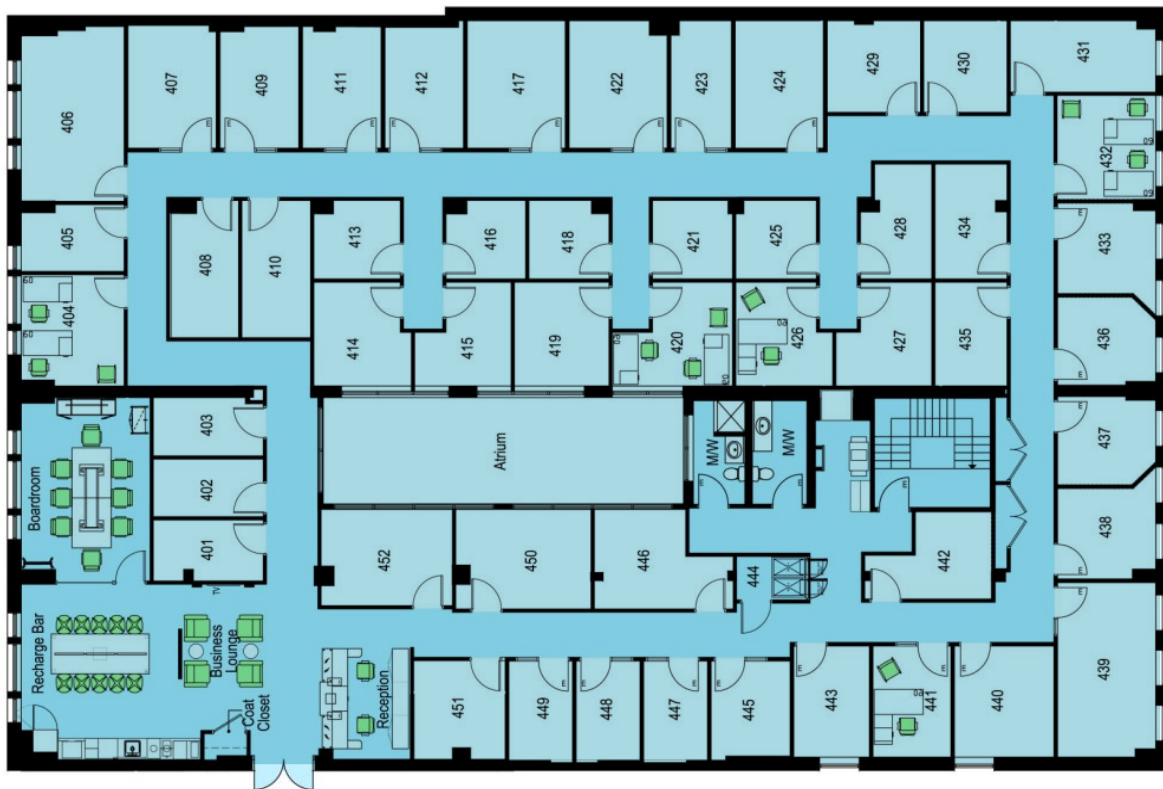
Cushman & Wakefield ULC, Brokerage
No warranty or representation, expressed or implied, is made as to the accuracy of the information contained herein, and same is submitted subject to errors, omissions, change of price, rental or other conditions, withdrawal without notice, and to any specific listing condition, imposed by our principals. *Sales Representative

OFFICE FOR LEASE 229 YONGE STREET



FLOOR PLAN

SUITE 400 - 9,156 SF



FOR MORE INFORMATION, PLEASE CONTACT:

CLARKE STRUTHERS*

Senior Vice President
416 359 2451
clarke.struthers@cushwake.com

RILEY LITTLEJOHN*

Associate Vice President
416 359 2444
riley.littlejohn@cushwake.com

CUSHMAN & WAKEFIELD ULC, BROKERAGE

161 Bay Street, Suite 1500
Toronto, M5J 2S1
cushmanwakefield.com

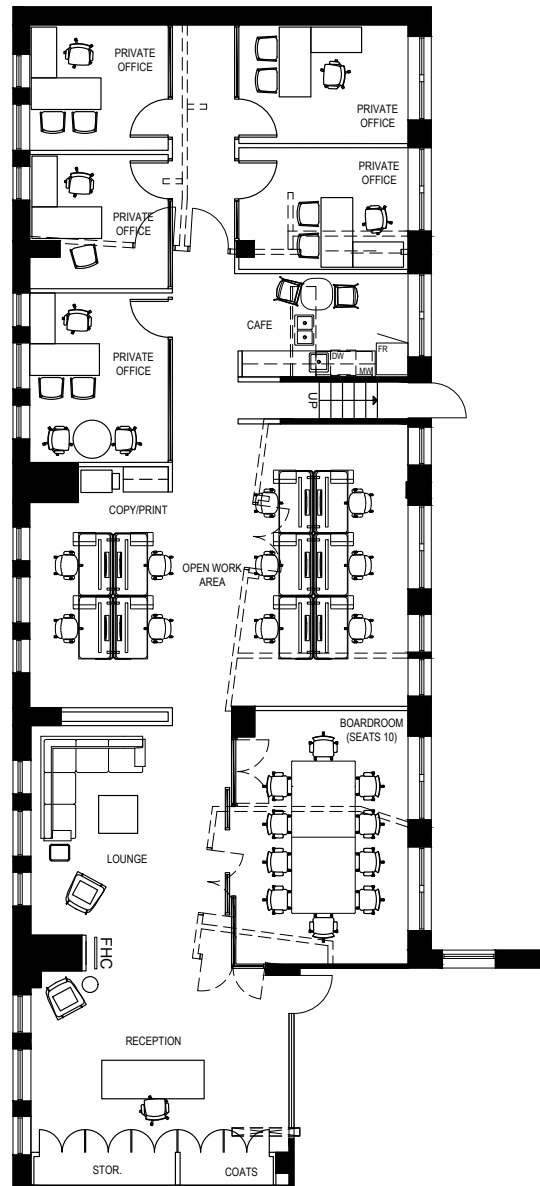
Cushman & Wakefield ULC, Brokerage
No warranty or representation, expressed or implied, is made as to the accuracy of the information contained herein, and same is submitted subject to errors, omissions, change of price, rental or other conditions, withdrawal without notice, and to any specific listing condition, imposed by our principals. *Sales Representative

OFFICE FOR LEASE 229 YONGE STREET



FLOOR PLAN

SUITE 500 - 3,256 SF



FOR MORE INFORMATION, PLEASE CONTACT:

CLARKE STRUTHERS*
Senior Vice President
416 359 2451
clarke.struthers@cushwake.com

RILEY LITTLEJOHN*
Associate Vice President
416 359 2444
riley.littlejohn@cushwake.com

CUSHMAN & WAKEFIELD ULC, BROKERAGE
161 Bay Street, Suite 1500
Toronto, M5J 2S1
cushmanwakefield.com

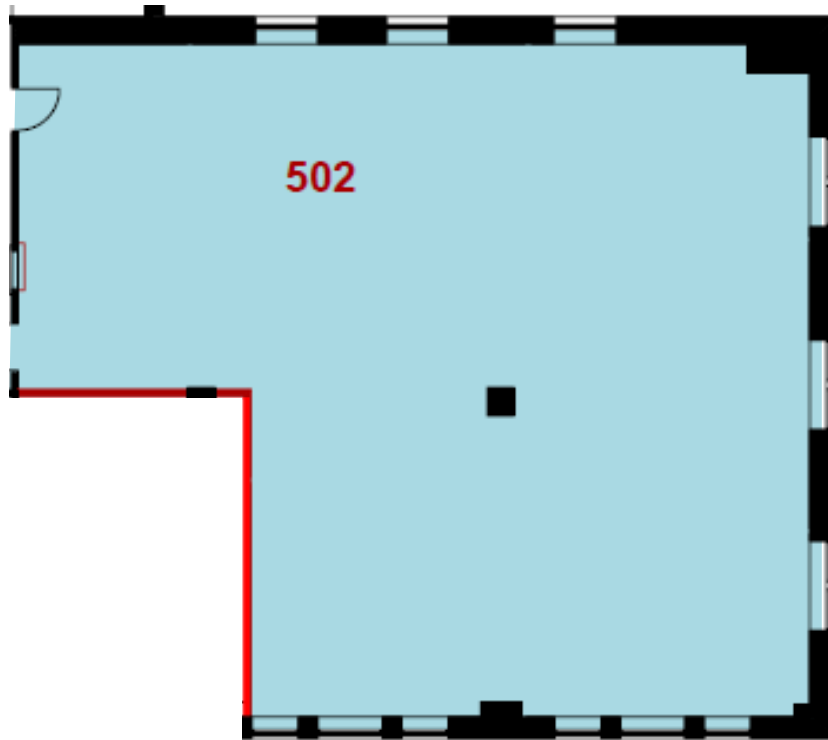
Cushman & Wakefield ULC, Brokerage
No warranty or representation, expressed or implied, is made as to the accuracy of the information contained herein, and same is submitted subject to errors, omissions, change of price, rental or other conditions, withdrawal without notice, and to any specific listing condition, imposed by our principals. *Sales Representative

OFFICE FOR LEASE 229 YONGE STREET



FLOOR PLAN

SUITE 502 - 2,412 SF



FOR MORE INFORMATION, PLEASE CONTACT:

CLARKE STRUTHERS*

Senior Vice President
416 359 2451
clarke.struthers@cushwake.com

RILEY LITTLEJOHN*

Associate Vice President
416 359 2444
riley.littlejohn@cushwake.com

CUSHMAN & WAKEFIELD ULC, BROKERAGE

161 Bay Street, Suite 1500
Toronto, M5J 2S1
cushmanwakefield.com

Cushman & Wakefield ULC, Brokerage
No warranty or representation, expressed or implied, is made as to the accuracy of the information contained herein, and same is submitted subject to errors, omissions, change of price, rental or other conditions, withdrawal without notice, and to any specific listing condition, imposed by our principals. *Sales Representative