



**FLEX SUITES FOR LEASE**

**210 NORTH REDWOOD ROAD**  
**NORTH SALT LAKE, UT 84054**

**JOSH WANGSGARD, MBA**

Principal Broker

+1 801 784 5322

[josh.wangsgard@cushwake.com](mailto:josh.wangsgard@cushwake.com)



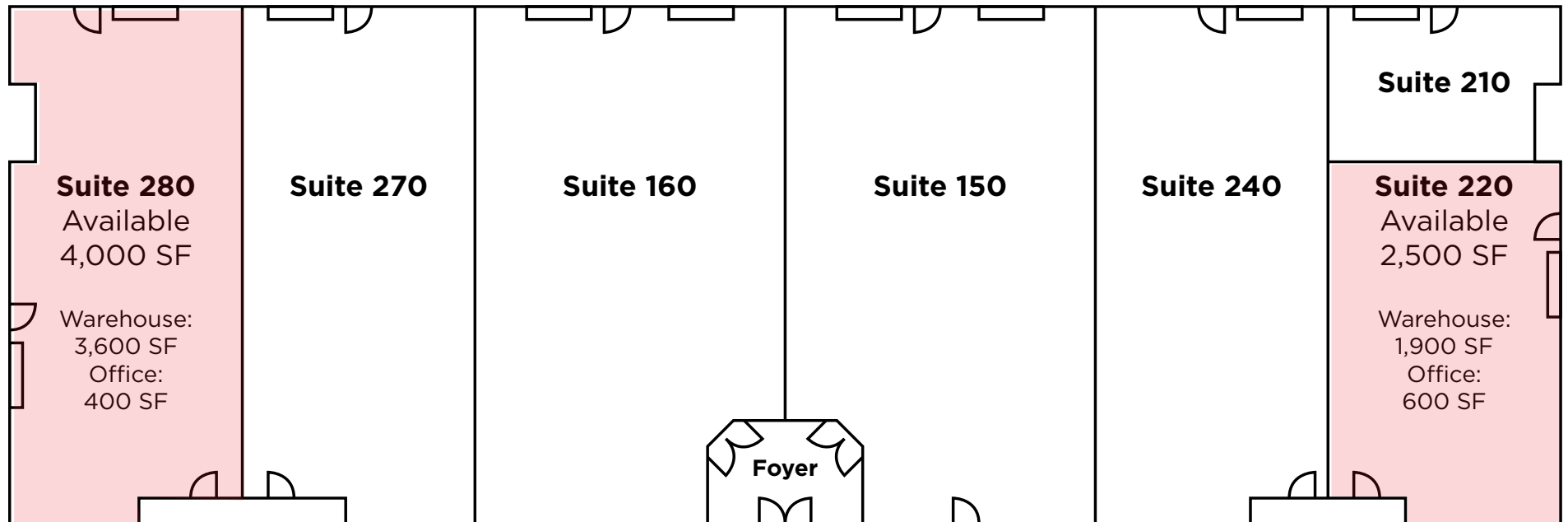
**CUSHMAN &  
WAKEFIELD**

# 210 NORTH REDWOOD ROAD

## NORTH SALT LAKE, UT 84054

### Property Features

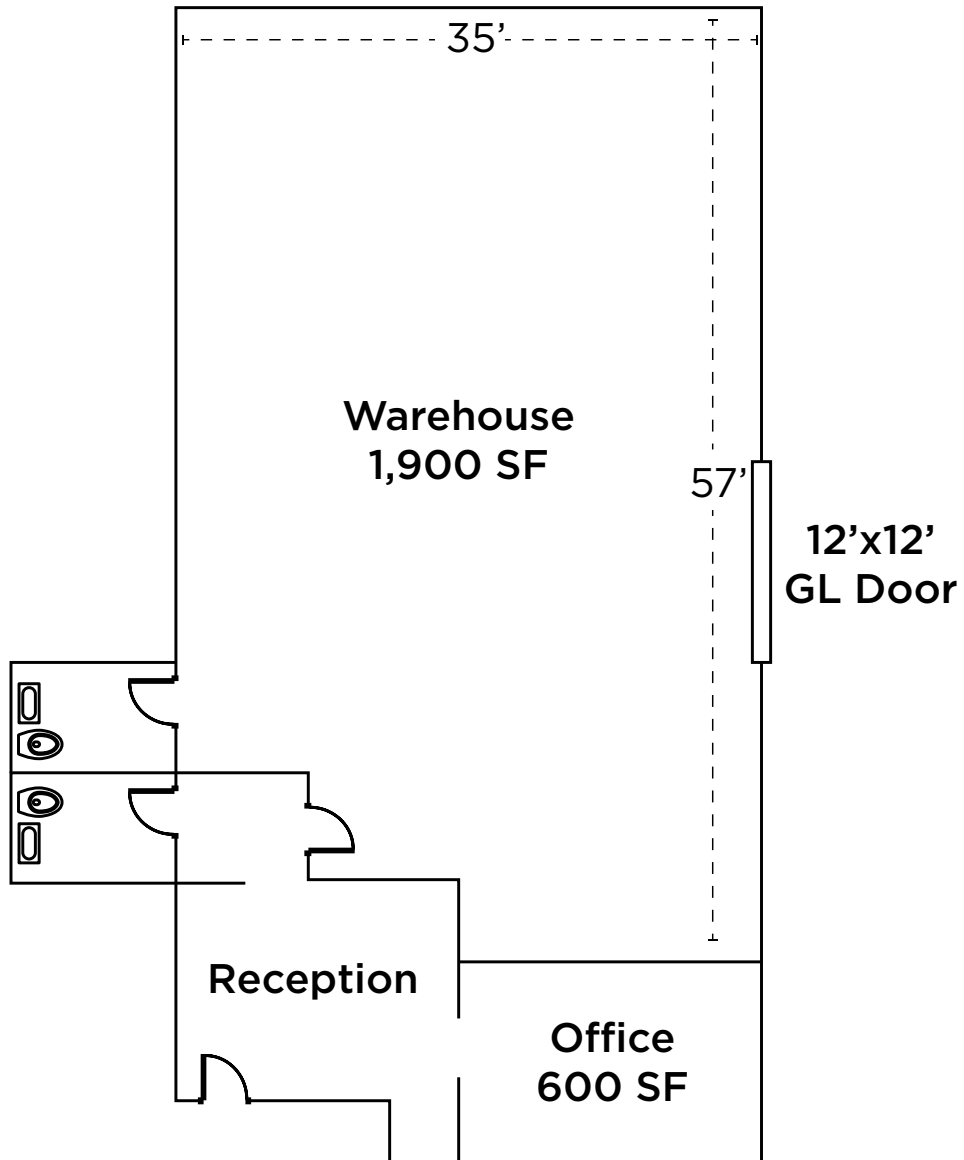
Lease Rate:	\$1.25 PSF/NNN
Space Available:	2,500 SF & 4,000 SF
Power:	3 Phase, 480 V
Height:	16'
Loading:	10' x 12' Ground Level Doors 12' x 12 Ground Level Doors



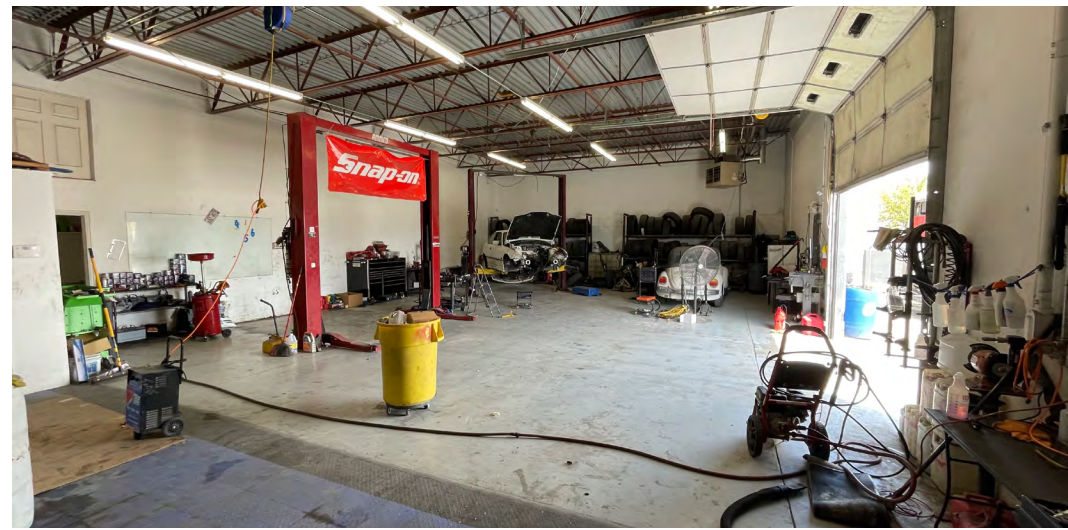
# 210 NORTH REDWOOD ROAD

## NORTH SALT LAKE, UT 84054

Suite 220 - 2,500 SF

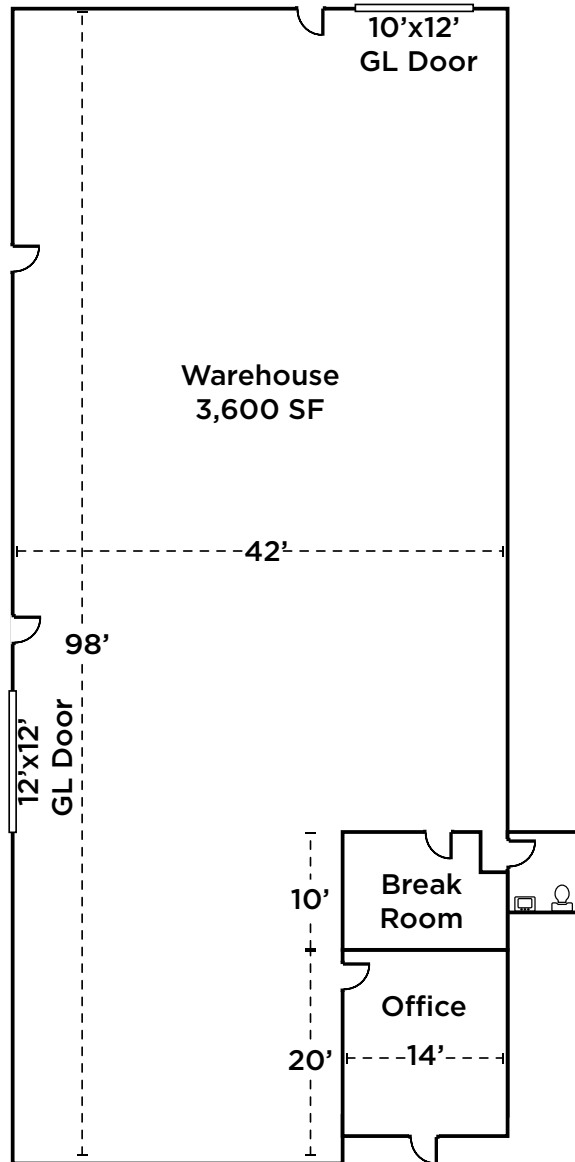


\*SF Approximate



# 210 NORTH REDWOOD ROAD NORTH SALT LAKE, UT 84054

Suite 280 - 4,000 SF



\*SF Approximate



# 210 NORTH REDWOOD ROAD

## NORTH SALT LAKE, UT 84054

### Easy freeway access

Downtown SLC	15 Minutes
SLC Int. Airport	11 Minutes
I-15	3 Minutes
I-215	2 Minutes



### FOR MORE INFORMATION, CONTACT:

JOSH WANGSGARD, MBA  
Principal Broker  
+1 801 784 5322  
[josh.wangsgard@cushwake.com](mailto:josh.wangsgard@cushwake.com)

©2024 Cushman & Wakefield. All rights reserved. The information contained in this communication is strictly confidential. This information has been obtained from sources believed to be reliable but has not been verified. NO WARRANTY OR REPRESENTATION, EXPRESS OR IMPLIED, IS MADE AS TO THE CONDITION OF THE PROPERTY (OR PROPERTIES) REFERENCED HEREIN OR AS TO THE ACCURACY OR COMPLETENESS OF THE INFORMATION CONTAINED HEREIN, AND SAME IS SUBMITTED SUBJECT TO ERRORS, OMISSIONS, CHANGE OF PRICE, RENTAL OR OTHER CONDITIONS, WITHDRAWAL WITHOUT NOTICE, AND TO ANY SPECIAL LISTING CONDITIONS IMPOSED BY THE PROPERTY OWNER(S). ANY PROJECTIONS, OPINIONS OR ESTIMATES ARE SUBJECT TO UNCERTAINTY AND DO NOT SIGNIFY CURRENT OR FUTURE PROPERTY PERFORMANCE.

