

# 1241 AMBASSADOR BLVD

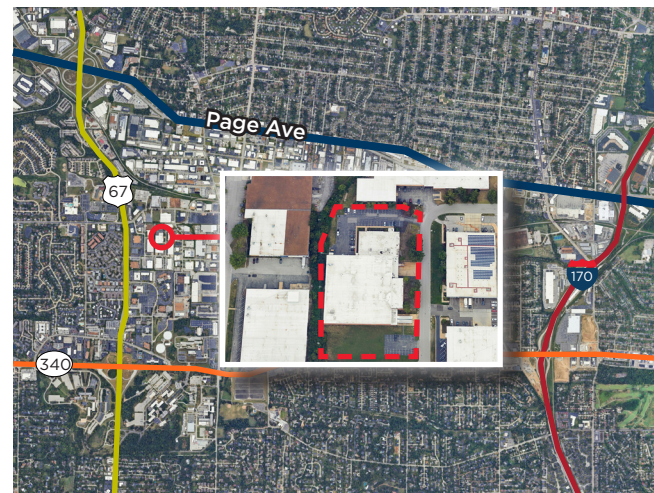
## ST. LOUIS, MO 63132

FOR SUBLEASE 58,631 SF



## PROPERTY HIGHLIGHTS

Total Available Area:	58,631 SF
Office/Showroom:	±9,500 SF
Clear Height:	20'
Loading:	5 docks, each equipped with pit levelers
Parking:	1.2/1,000 SF
Power:	1,200 amps
Sublease Expiration:	5/31/2028
Sublease Rate:	\$5.75/SF, NNN
Building Features:	Single-tenant building located in the 39th North District



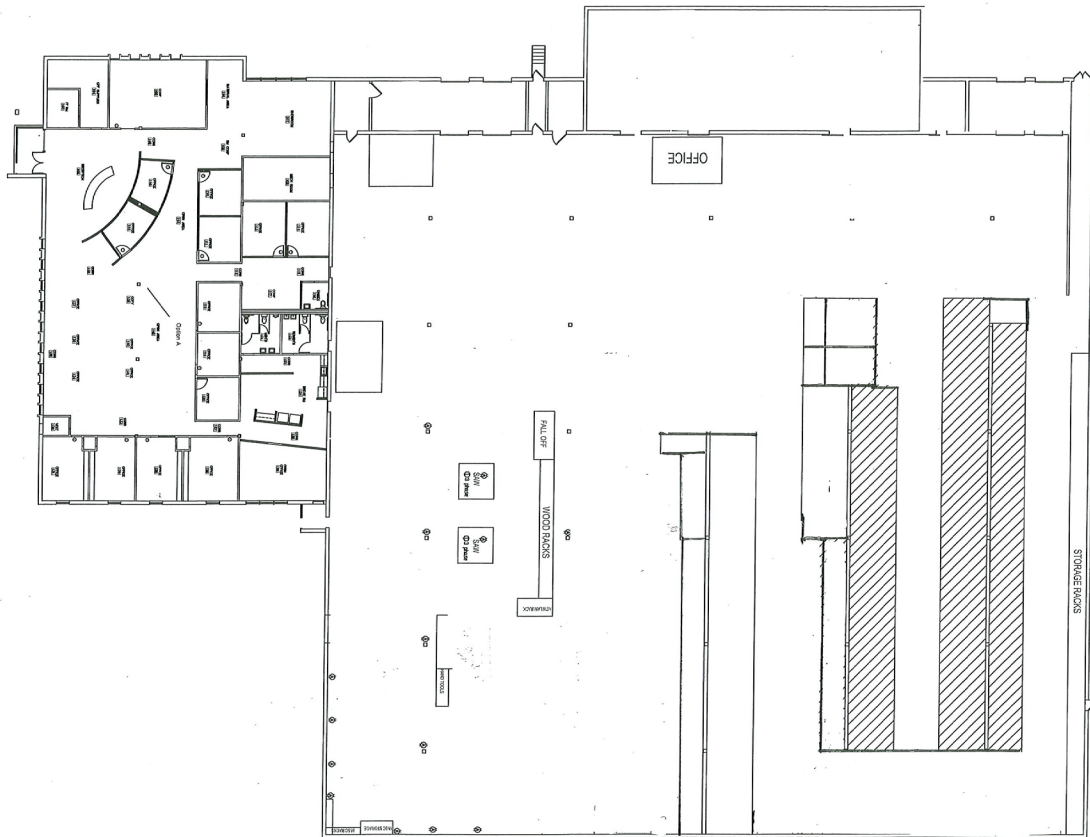
## CONTACT

Matt Eastin, SIOR, CCIM  
Executive Director  
+1 314 746 0350  
matt.eastin@cushwake.com

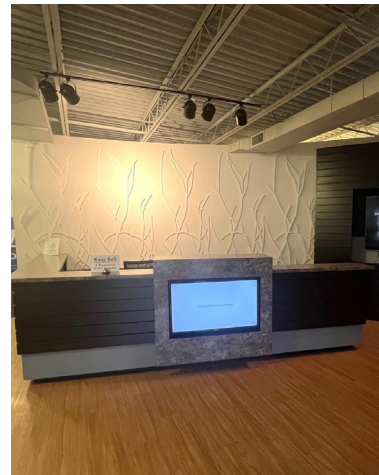
Christy Wirth, SIOR, CCIM  
Director  
+1 314 813 9524  
christy.wirth@cushwake.com



# FLOOR PLAN



# INTERIOR PHOTOS



## CONTACT

**Matt Eastin, SIOR, CCIM**  
Executive Director  
+1 314 746 0350  
matt.eastin@cushwake.com

**Christy Wirth, SIOR, CCIM**  
Director  
+1 314 813 9524  
christy.wirth@cushwake.com

