

# Office/Technology Complex with 2,281 - 9,762 SF Available

For Lease | Alpha Park, Highland Heights, Ohio 44143





## PROPERTY HIGHLIGHTS

- Alpha Park is an office and technology complex comprised of eleven buildings totaling 640,000 SF and set in a park-like environment
- On-site banking, child care and doggy day care
- Ownership and management on-site
- Docks and drive-in doors, as well as high-speed diverse fiber connection
- Competitively priced modified gross lease terms with flexible space configurations to suit

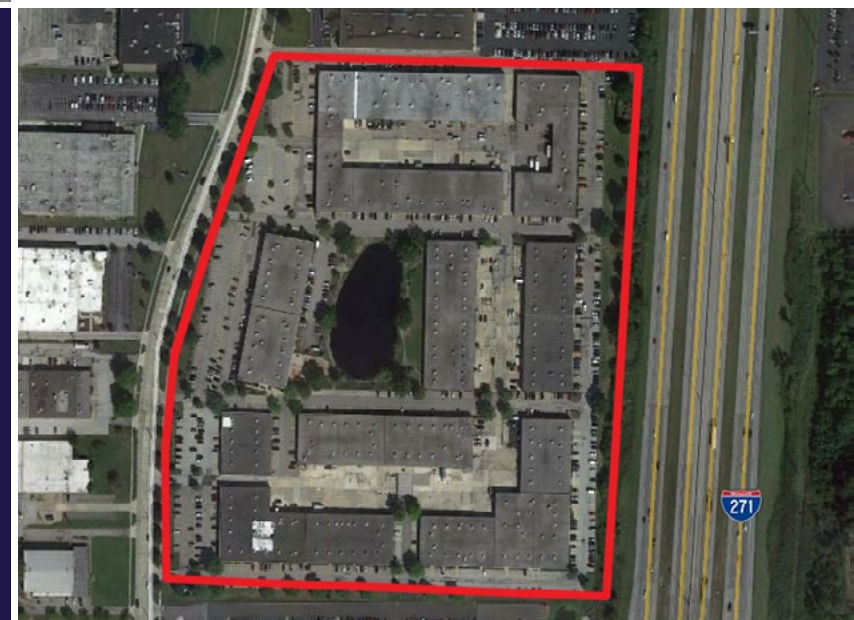
## LEASE RATE

Warehouse: \$7.00/SF MG

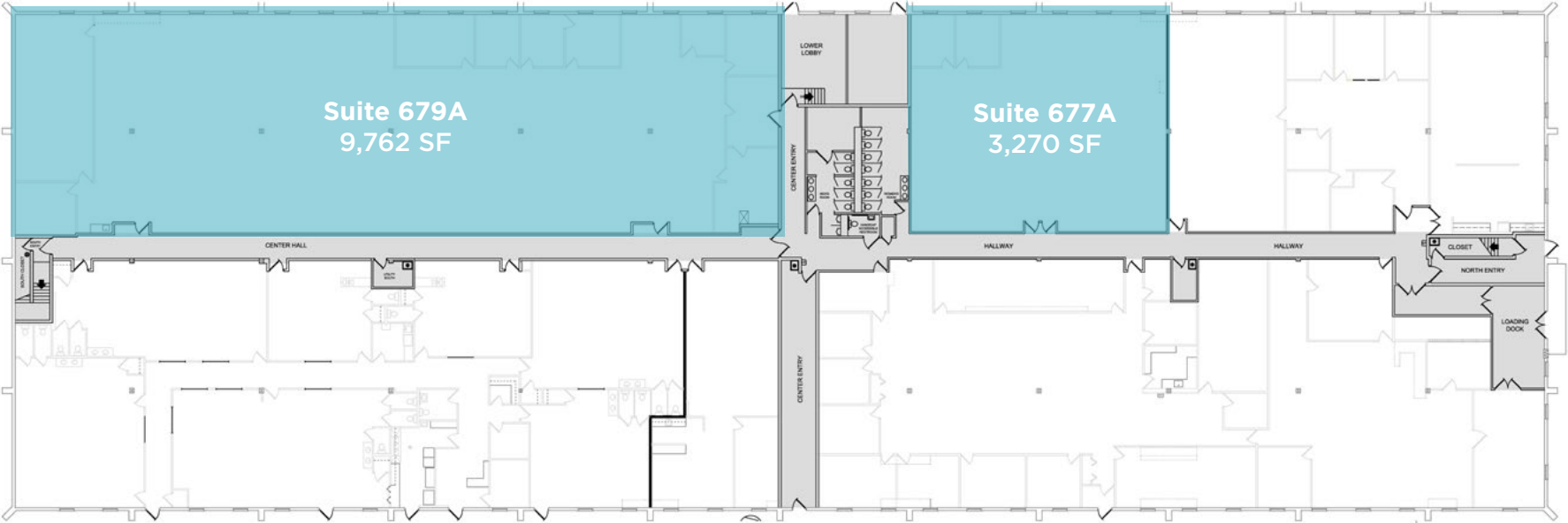
Office: \$13.00/SF MG

## Current Availability

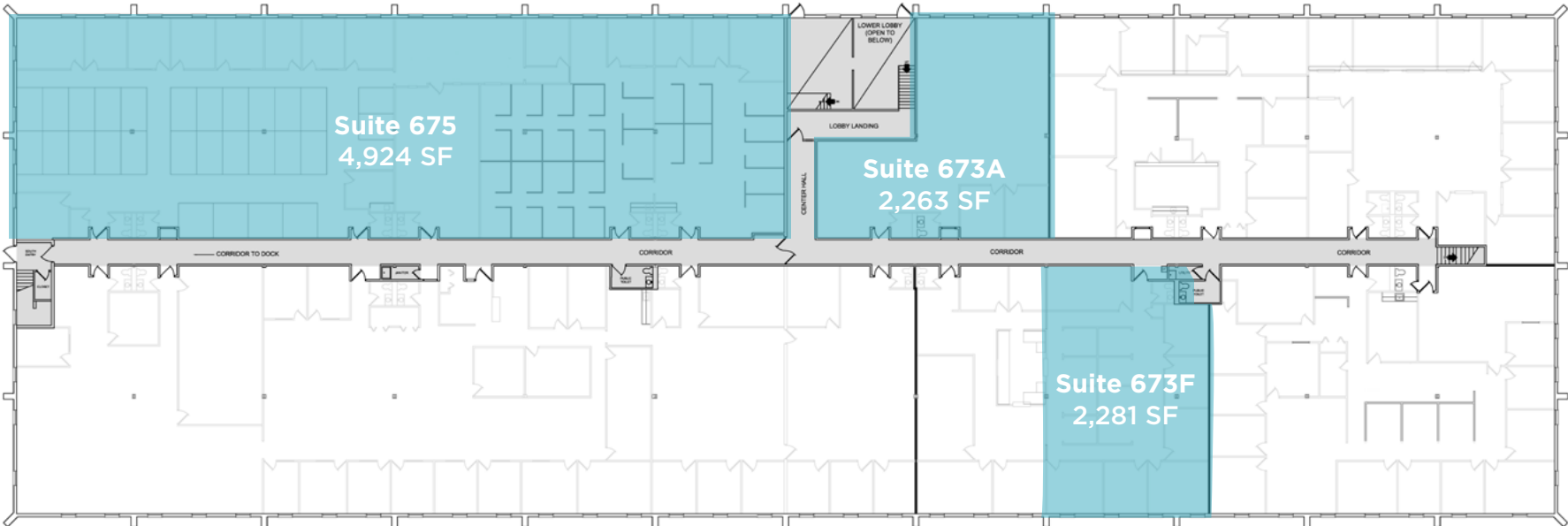
Suite	Office SF
697A	9,762 SF
677A	3,270 SF
675	4,924 SF
673A	2,263 SF
673F	2,281 SF



# Building A Floor Plans



Lower Level



Upper Level

**144,006**

Population  
(2024 | 5 Mile)

**43.1**

Median Age  
(2024 | 5 Mile)

**65,157**

Households  
(2024 | 5 Mile)

**\$114,806**

Avg. Household Income  
(2024 | 5 Mile)

**6,003**

Total Businesses  
(2024 | 5 Mile)

**80,133**

Total Employees  
(2024 | 5 Mile)



**PHILIPS**  
Healthcare

**PROGRESSIVE**

**PROGRESSIVE**

**Alpha Park Drive**

**THE GODDARD SCHOOL**  
FOR EARLY CHILDHOOD DEVELOPMENT



428 ATHLETICS

**KinderCare**  
LEARNING CENTERS

**SCHOOL of ROCK**

ALPHA DR

**PROGRESSIVE**

**SKY ZONE**  
TRAMPOLINE PARK

**THE HOME DEPOT**

**BIG LOTS!**

**KOHL'S**



25,822 vpd



**PROGRESSIVE**  
International  
Headquarters

**Mayfield High School**

112,065 vpd



122,834 vpd



**SKODA MINOTTI**  
CPA, BUSINESS & FINANCIAL ADVISORS

**FirstEnergy**

**Rockwell Automation**



**PREFORMED LINE PRODUCTS**

**Hilton Garden Inn**



**University Hospitals**  
Mayfield Village Health Center

**Rockwell Automation**

**Lakeshore Dance**  
Gymnastics & Cheer

**Holiday Inn**



**Howard Hanna**

**Austin's**

**Mayfield City Schools**

**CVS pharmacy** **Citizens Bank** **YOURS TRULY**  
**Aladdin's** **Geraci's**  
**Jordan Market** **Paradise** **FLOW**  
**YOGA STUDIOS**

**Shoppes at Alpha**

**drug mart** **Panera** **Tuesday Morning**  
**82B** **La Fiesta** **POKE**  
**HIBACHI** **Japanese Steakhouse**  
**KeyBank** **TITLE BOXING CLUB**

SOM CENTER RD

15,583 vpd

27,364 vpd

**CHRYSLER** **Jeep** **RAM**

20,430 vpd





## **ALPHA PARK HIGHLAND HEIGHTS, OHIO 44143**

**ROBERT WETZEL**  
Vice President  
+1 216 525 1486  
[rwetzel@crescorealestate.com](mailto:rwetzel@crescorealestate.com)

**AUSTIN WETZEL**  
Associate  
+1 216 525 1474  
[awetzel@crescorealestate.com](mailto:awetzel@crescorealestate.com)

**RICO A. PIETRO, SIOR**  
Principal  
+1 216 525 1473  
[rpietro@crescorealestate.com](mailto:rpietro@crescorealestate.com)



**Cushman & Wakefield | CRESCO**  
6100 Rockside Woods Blvd, Suite 200  
Cleveland, Ohio 44131

[crescorealestate.com](http://crescorealestate.com)

©2025 Cushman & Wakefield. All rights reserved. The information contained in this communication is strictly confidential. This information has been obtained from sources believed to be reliable but has not been verified. NO WARRANTY OR REPRESENTATION, EXPRESS OR IMPLIED, IS MADE AS TO THE CONDITION OF THE PROPERTY (OR PROPERTIES) REFERENCED HEREIN OR AS TO THE ACCURACY OR COMPLETENESS OF THE INFORMATION CONTAINED HEREIN, AND SAME IS SUBMITTED SUBJECT TO ERRORS, OMISSIONS, CHANGE OF PRICE, RENTAL OR OTHER CONDITIONS, WITHDRAWAL WITHOUT NOTICE, AND TO ANY SPECIAL LISTING CONDITIONS IMPOSED BY THE PROPERTY OWNER(S). ANY PROJECTIONS, OPINIONS OR ESTIMATES ARE SUBJECT TO UNCERTAINTY AND DO NOT SIGNIFY CURRENT OR FUTURE PROPERTY PERFORMANCE.