

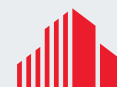


FOR SALE

DAVIDSON RIDGE INDUSTRIAL PARK

28.09 ACRES – RAIL ACCESSIBLE

US HIGHWAY 64, LEXINGTON, NC 27292



**CUSHMAN &
WAKEFIELD**

DAVIDSON RIDGE INDUSTRIAL PARK

28.09 ACRES – RAIL ACCESSIBLE

US HIGHWAY 64, LEXINGTON, NC, 27292

Property Features

- Fully entitled industrial land for sale
- 28.09 acres offered at \$1,300,000
- Zoned Heavy Industrial (HI)
- Site rail accessible through Norfolk Southern
- Recent annexation into City of Lexington
- City of Lexington Water and Sewer
- Less than one (1) mile to Business I-85 and US Hwy 64 interchange
- Three (3) miles to I-85 and US Hwy 64 interchange
- 15 minutes to High Point
- 20 minutes to Winston-Salem
- 25 minutes to Greensboro
- Lat Long 35°49'45.3"N 80°13'48.0"W

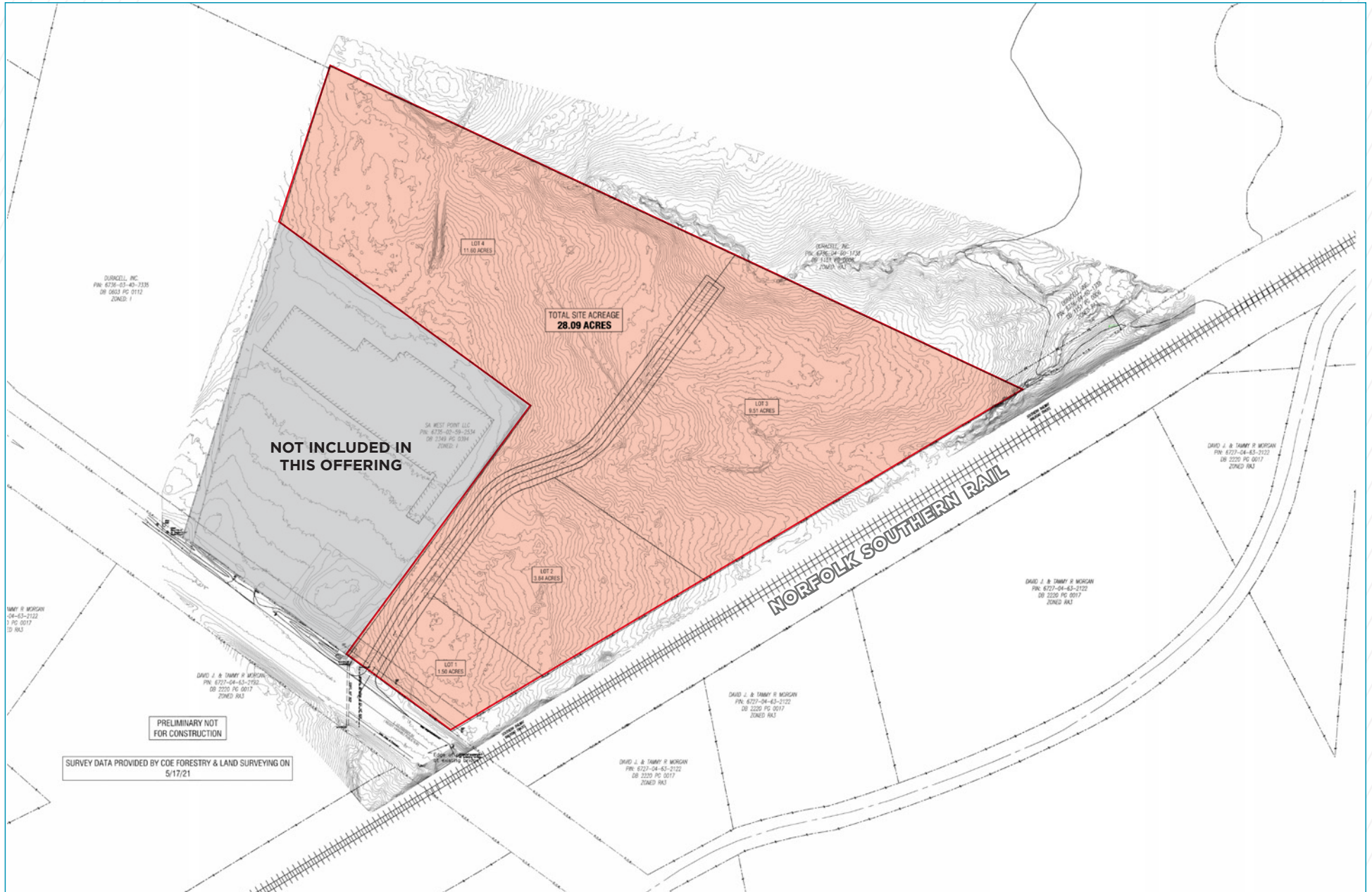


DAVIDSON RIDGE INDUSTRIAL PARK

28.09 ACRES - RAIL ACCESSIBLE

US HIGHWAY 64, LEXINGTON, NC, 27292

SITE PLAN

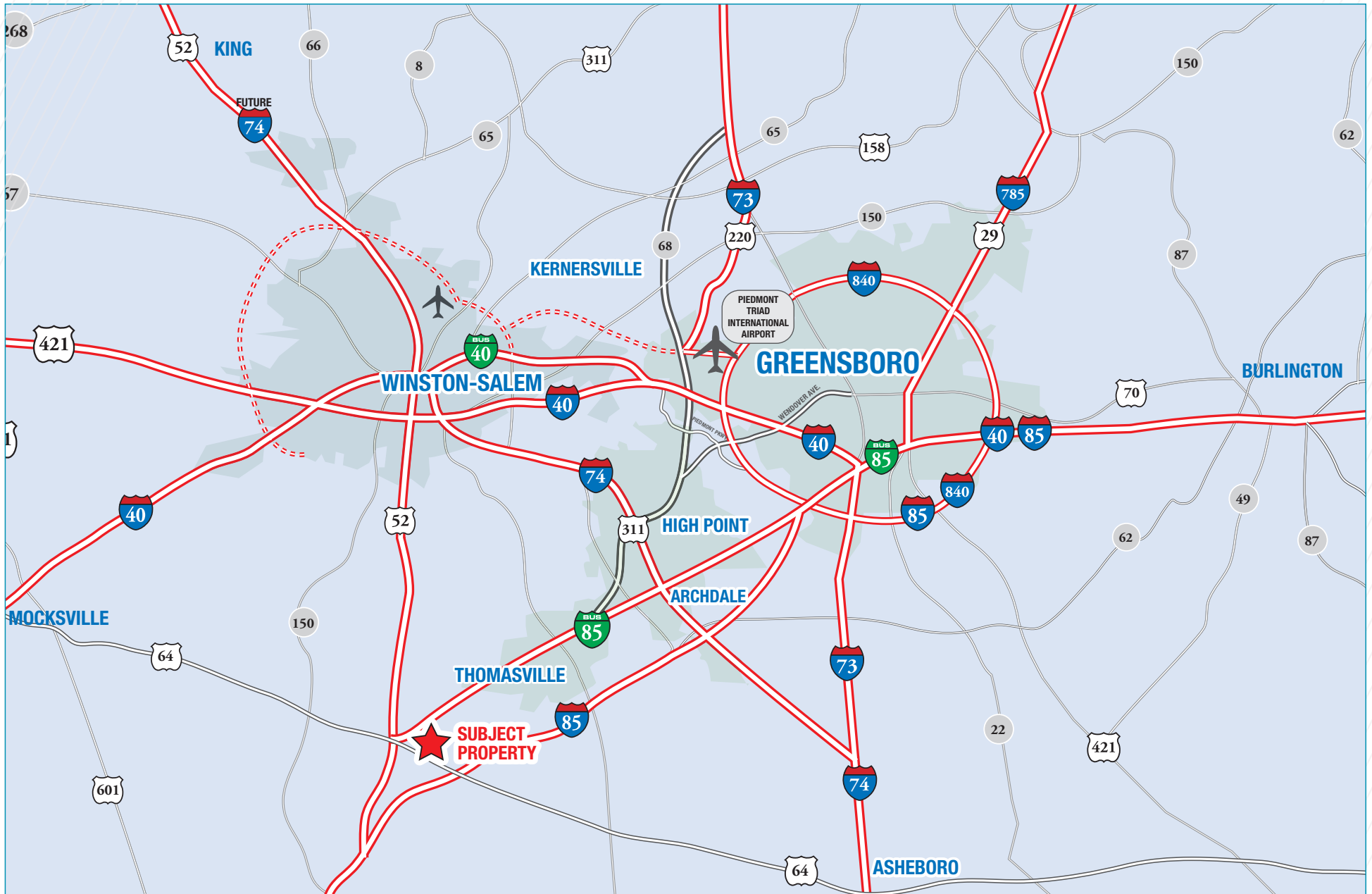


DAVIDSON RIDGE INDUSTRIAL PARK

28.09 ACRES - RAIL ACCESSIBLE

US HIGHWAY 64, LEXINGTON, NC, 27292

LOCATION MAP

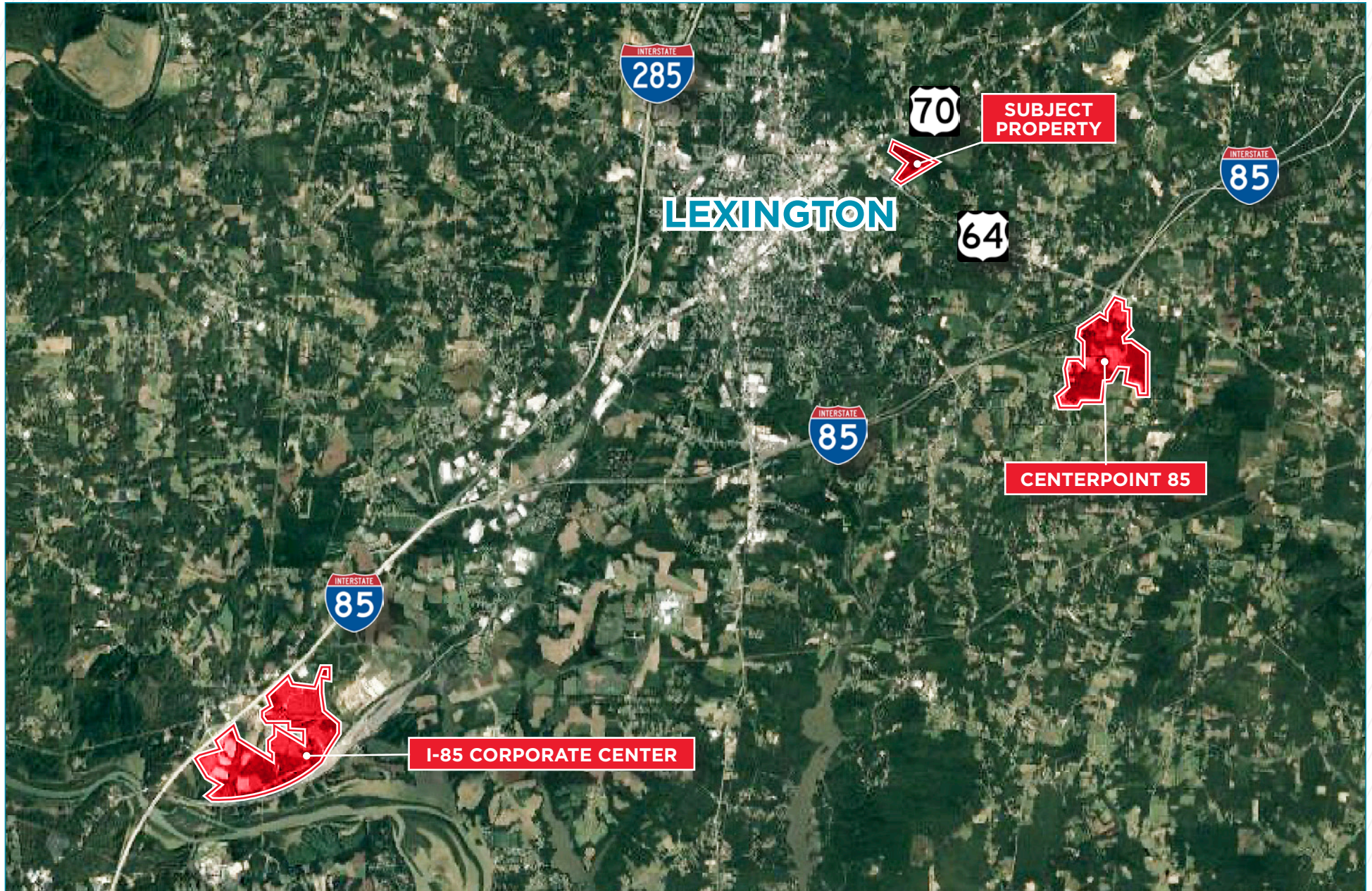


DAVIDSON RIDGE INDUSTRIAL PARK

28.09 ACRES - RAIL ACCESSIBLE

US HIGHWAY 64, LEXINGTON, NC, 27292

AERIAL OF SURROUNDING DEVELOPING INDUSTRIAL PARKS



DAVIDSON RIDGE INDUSTRIAL PARK

28.09 ACRES – RAIL ACCESSIBLE

US HIGHWAY 64, LEXINGTON, NC, 27292



FOR MORE INFORMATION, CONTACT:

JASON OFSANKO, SIOR

Managing Director

+1 336 812 3300

jason.ofsanko@cushwake.com

TOM TOWNES, SIOR, CCIM

Managing Director

+1 336 812 3302

tom.townes@cushwake.com

JORDAN MITCHELL

Senior Associate

+1 336 201 0495

jordan.mitchell@cushwake.com

©2023 Cushman & Wakefield. All rights reserved. The material in this presentation has been prepared solely for information purposes, and is strictly confidential. Any disclosure, use, copying or circulation of this presentation (or the information contained within it) is strictly prohibited, unless you have obtained Cushman & Wakefield's prior written consent. The views expressed in this presentation are the views of the author and do not necessarily reflect the views of Cushman & Wakefield. Neither this presentation nor any part of it shall form the basis of, or be relied upon in connection with any offer, or act as an inducement to enter into any contract or commitment whatsoever. NO REPRESENTATION OR WARRANTY IS GIVEN, EXPRESS OR IMPLIED, AS TO THE ACCURACY OF THE INFORMATION CONTAINED WITHIN THIS PRESENTATION, AND CUSHMAN & WAKEFIELD IS UNDER NO OBLIGATION TO SUBSEQUENTLY CORRECT IT IN THE EVENT OF ERRORS.



**CUSHMAN &
WAKEFIELD**