

8051 National Service Road

Colfax, NC 27235



15.45 ACRES | FOR SALE - DEVELOPMENT OPPORTUNITY



Kevin Kemp, SIOR
Managing Director
+1 336 812 3307
kevin.kemp@cushwake.com

Raffi Simel, SIOR
Director
+1 336 289 2541
raffi.simel@cushwake.com

628 Green Valley Rd., Suite 202
Greensboro, NC 27408
+1 336 668 9999
cushmanwakefield.com

PROPERTY HIGHLIGHTS

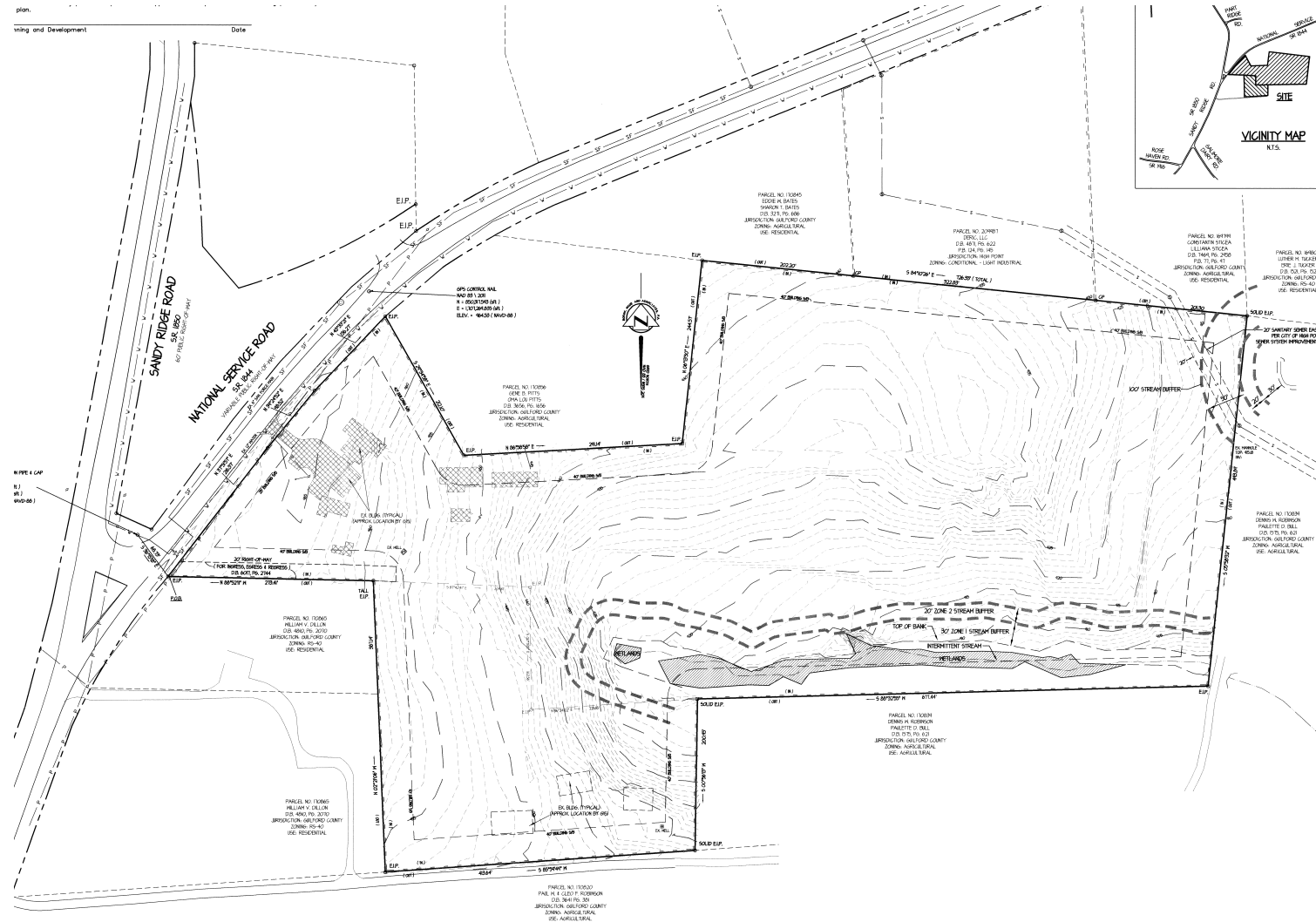


- 15.45 Acres
- For Sale: \$1,750,000
- Zoned CZ-LI
- Located in the center of the rapidly growing Triad Region of North Carolina

- Less than 1 mile from Interstate 40 via Sandy Ridge Road
- 96 miles from Charlotte
- 90 miles from Raleigh
- Ideal for Industrial, Retail or Multifamily Development* (would require rezoning)



SURVEY



FOR MORE INFORMATION, PLEASE CONTACT:

Kevin Kemp, SIOR
Managing Director
+1 336 812 3307
kevin.kemp@cushwake.com

Raffi Simel, SIOR
Director
+1 336 289 2541
raffi.simel@cushwake.com

628 Green Valley Rd., Suite 202
Greensboro, NC 27408
+1 336 668 9999
cushmanwakefield.com

©2024 Cushman & Wakefield. All rights reserved. The information contained in this communication is strictly confidential. This information has been obtained from sources believed to be reliable but has not been verified. NO WARRANTY OR REPRESENTATION, EXPRESS OR IMPLIED, IS MADE AS TO THE CONDITION OF THE PROPERTY (OR PROPERTIES) REFERENCED HEREIN OR AS TO THE ACCURACY OR COMPLETENESS OF THE INFORMATION CONTAINED HEREIN, AND SAME IS SUBMITTED SUBJECT TO ERRORS, OMISSIONS, CHANGE OF PRICE, RENTAL OR OTHER CONDITIONS, WITHDRAWAL WITHOUT NOTICE, AND TO ANY SPECIAL LISTING CONDITIONS IMPOSED BY THE PROPERTY OWNER(S). ANY PROJECTIONS, OPINIONS OR ESTIMATES ARE SUBJECT TO UNCERTAINTY AND DO NOT SIGNIFY CURRENT OR FUTURE PROPERTY PERFORMANCE.