

FOR SUBLEASE  
**28,750 SF AVAILABLE**



1001 CHERI WAY  
**LOUISVILLE, KY 40118**

2501 STANLEY GAULT PKWY. | LOUISVILLE, KY 40223

# PROPERTY HIGHLIGHTS

Space Available: 28,750 SF

Zoning: M-3

Ceiling Height: 33'

Clear Height: 28' Below Joist

Lighting: LED

Fire Protection Service: ESFR

Bay Depth: 300'

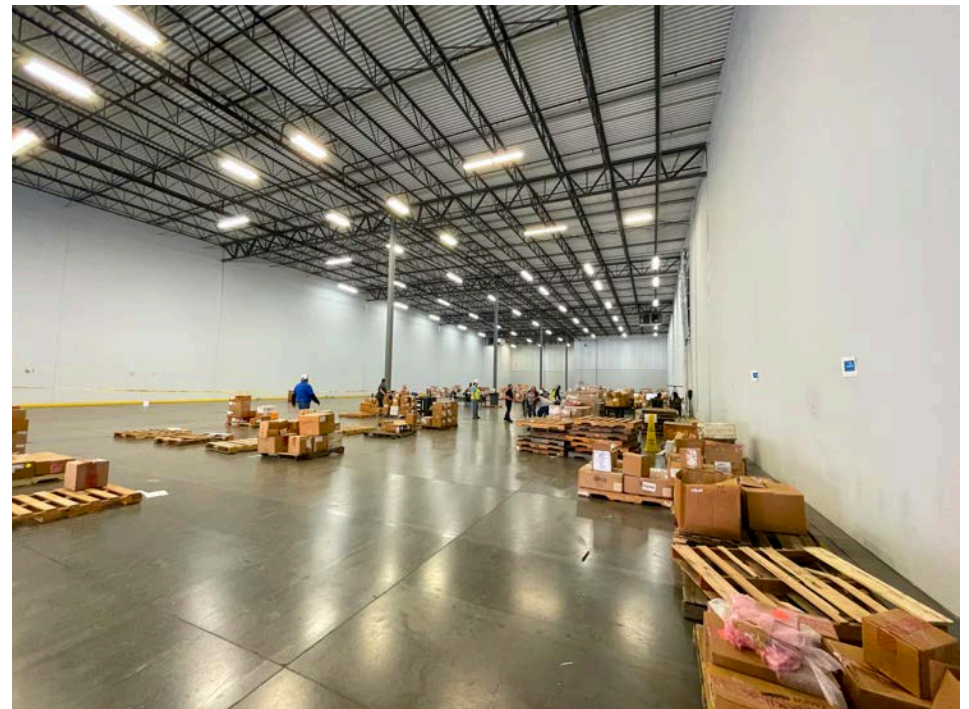
Column Spacing: 50 x 50

Dock-High Doors: 7 with levelers and seals

Trailer Parking: At Dock Doors

Electric: 277/480 Volt

Parking: Common







**0.8 MILES**

TO INTERSTATE 265

**5.0 MILES**

TO UPS WORLDPORT/  
AIRPORT

**4.0 MILES**

TO FORD ASSEMBLY PLANT

**9.4 MILES**

TO FEDEX FREIGHT

**10.1 MILES**

TO GE APPLIANCE PARK

1001 Cheri Way

EASY ACCESS TO  
MAJOR INTERSTATES

# CONTACT INFORMATION

## **STEPHAN F. GRAY, SIOR**

**President, Senior Director**

sgray@commercialkentucky.com

+1 502 719 3256



©2025 Cushman & Wakefield. All rights reserved. The information contained in this communication is strictly confidential. This information has been obtained from sources believed to be reliable but has not been verified. NO WARRANTY OR REPRESENTATION, EXPRESS OR IMPLIED, IS MADE AS TO THE CONDITION OF THE PROPERTY (OR PROPERTIES) REFERENCED HEREIN OR AS TO THE ACCURACY OR COMPLETENESS OF THE INFORMATION CONTAINED HEREIN, AND SAME IS SUBMITTED SUBJECT TO ERRORS, OMISSIONS, CHANGE OF PRICE, RENTAL OR OTHER CONDITIONS, WITHDRAWAL WITHOUT NOTICE, AND TO ANY SPECIAL LISTING CONDITIONS IMPOSED BY THE PROPERTY OWNER(S). ANY PROJECTIONS, OPINIONS OR ESTIMATES ARE SUBJECT TO UNCERTAINTY AND DO NOT SIGNIFY CURRENT OR FUTURE PROPERTY PERFORMANCE.

Independently Owned & Operated / A Member of the Cushman & Wakefield Alliance