

FOR SALE OR LEASE

18600 Crestwood Drive
Hagerstown, MD 21742



**CUSHMAN &
WAKEFIELD**



4,831 SF ON 2.45 ACRES

PROPERTY HIGHLIGHTS

- Commercial building available for sale or for lease in Washington County
- Suitable for light warehouse, industrial, storage or production, retail shop, school, child development center, religious center, professional office or quasi medical use
- Ample surface parking

Floors:	1
Sale Price:	\$800,000
Zoning:	Industrial, General "IG" allows for most intense industrial operations and businesses



FOR MORE INFORMATION, PLEASE CONTACT:

PETER ROSAN

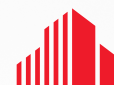
Executive Managing Director
+1 301 634 8487
peter.rosan@cushwake.com

KATIE GORMLEY

Director
+1 301 634 8489
katie.gormley@cushwake.com

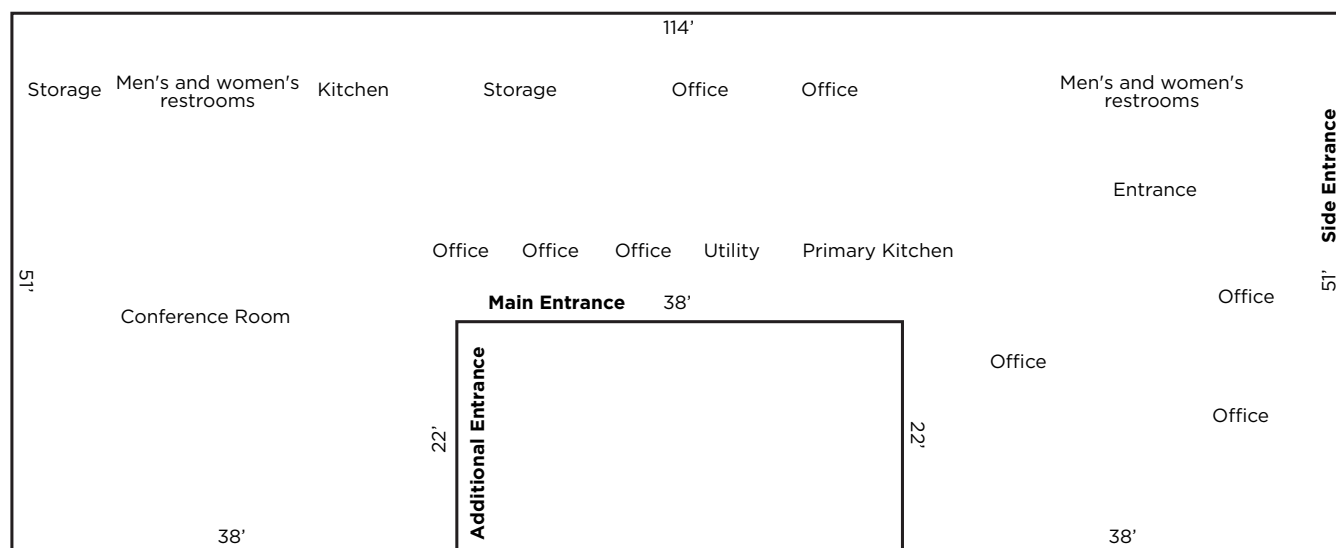
FOR SALE OR LEASE

18600 Crestwood Drive
Hagerstown, MD 21742



**CUSHMAN &
WAKEFIELD**

FLOOR PLAN



FOR MORE INFORMATION, PLEASE CONTACT:

PETER ROSAN

Executive Managing Director

+1 301 634 8487

peter.rosan@cushwake.com

KATIE GORMLEY

Director

+1 301 634 8489

katie.gormley@cushwake.com

FOR SALE OR LEASE

18600 Crestwood Drive
Hagerstown, MD 21742



**CUSHMAN &
WAKEFIELD**



FOR MORE INFORMATION, PLEASE CONTACT:

PETER ROSAN
Executive Managing Director
+1 301 634 8487
peter.rosan@cushwake.com

KATIE GORMLEY
Director
+1 301 634 8489
katie.gormley@cushwake.com

FOR SALE OR LEASE

18600 Crestwood Drive
Hagerstown, MD 21742



FOR MORE INFORMATION, PLEASE CONTACT:

PETER ROSAN

Executive Managing Director
+1 301 634 8487
peter.rosan@cushwake.com

KATIE GORMLEY

Director
+1 301 634 8489
katie.gormley@cushwake.com

©2024 Cushman & Wakefield. All rights reserved. The information contained in this communication is strictly confidential. This information has been obtained from sources believed to be reliable but has not been verified. NO WARRANTY OR REPRESENTATION, EXPRESS OR IMPLIED, IS MADE AS TO THE CONDITION OF THE PROPERTY (OR PROPERTIES) REFERENCED HEREIN OR AS TO THE ACCURACY OR COMPLETENESS OF THE INFORMATION CONTAINED HEREIN, AND SAME IS SUBMITTED SUBJECT TO ERRORS, OMISSIONS, CHANGE OF PRICE, RENTAL OR OTHER CONDITIONS, WITHDRAWAL WITHOUT NOTICE, AND TO ANY SPECIAL LISTING CONDITIONS IMPOSED BY THE PROPERTY OWNER(S). ANY PROJECTIONS, OPINIONS OR ESTIMATES ARE SUBJECT TO UNCERTAINTY AND DO NOT SIGNIFY CURRENT OR FUTURE PROPERTY PERFORMANCE.