



2 MOUNT ROYAL AVE

MARLBOROUGH, MA 01752

2,481 RSF AVAILABLE FOR SUBLEASE

PLUG & PLAY OPPORTUNITY

FURNITURE CAN BE MADE AVAILABLE

TERM THROUGH JULY 31, 2028

THOMAS COSTELLO

+1 203 448 8137

thomas.costello@cushwake.com

PETE WHORISKEY

+1 617 962 0170

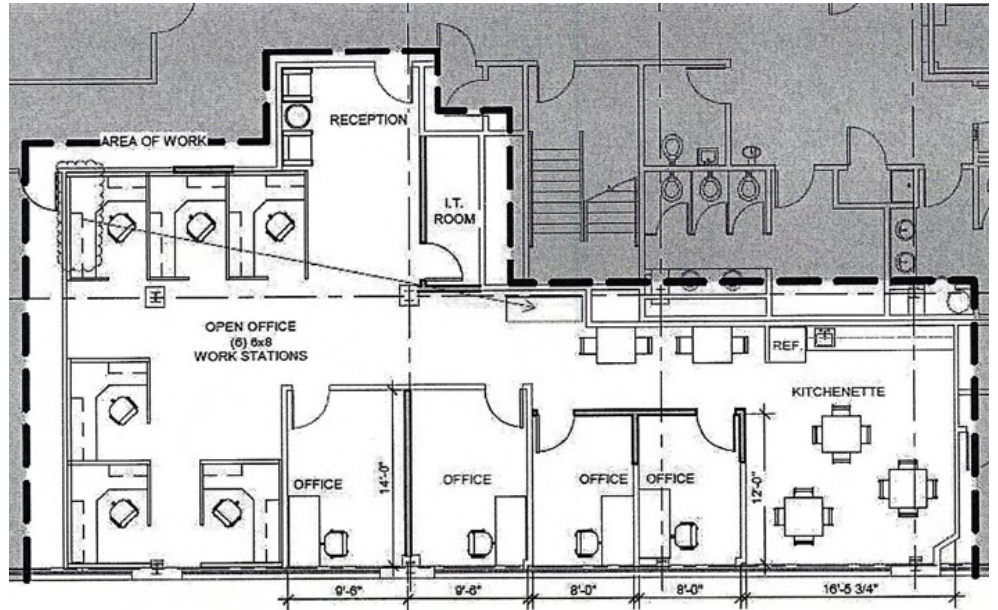
pete.whoriskey@cushwake.com





2 MOUNT ROYAL AVE

2,481 RSF AVAILABLE FOR SUBLEASE



AMPLE, FREE SURFACE PARKING (4 PER 1,000)



KNOWLEDGE PARK IS PROFESSIONALLY LANDSCAPED AND MANAGED



FITNESS CENTER AND CAFÉ ON-SITE; CHILDCARE CENTER COMING SUMMER 2025



NEARBY AMENITIES INCLUDE TARGET, HANNAFORD SUPERMARKET, SOLOMON POND MALL, AND THE SHOPS AT HIGHLAND COMMONS



APPROXIMATELY 40 MINUTES FROM DOWNTOWN BOSTON, SITUATED BETWEEN ROUTE 20 AND ROUTE 495

THOMAS COSTELLO

+1 203 448 8137

thomas.costello@cushwake.com

PETE WHORISKEY

+1 617 962 0170

pete.whoriskey@cushwake.com

