



10,864 SF  
FOR SALE

# MIDDLEBELT ROAD

FARMINGTON HILLS,  
MICHIGAN

28000



CUSHMAN &  
WAKEFIELD



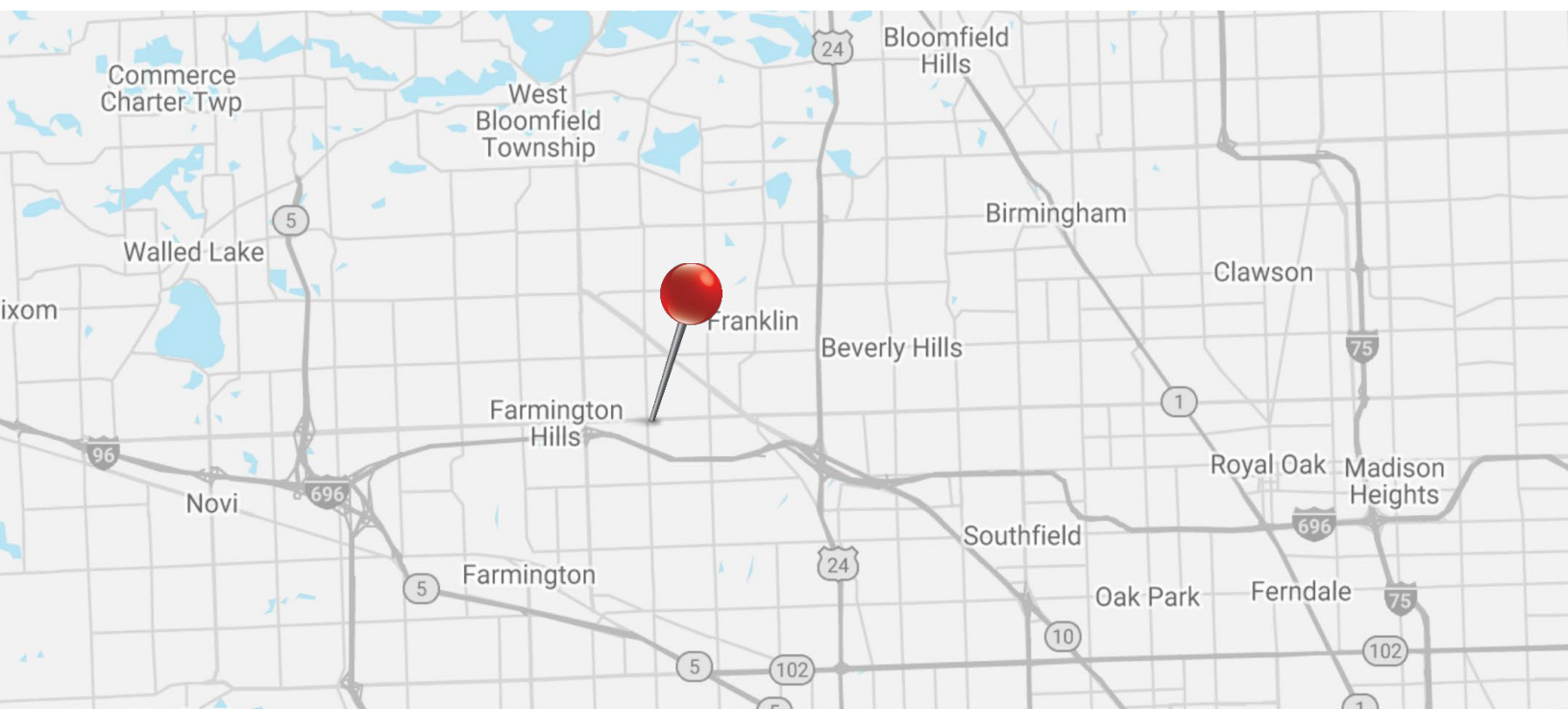
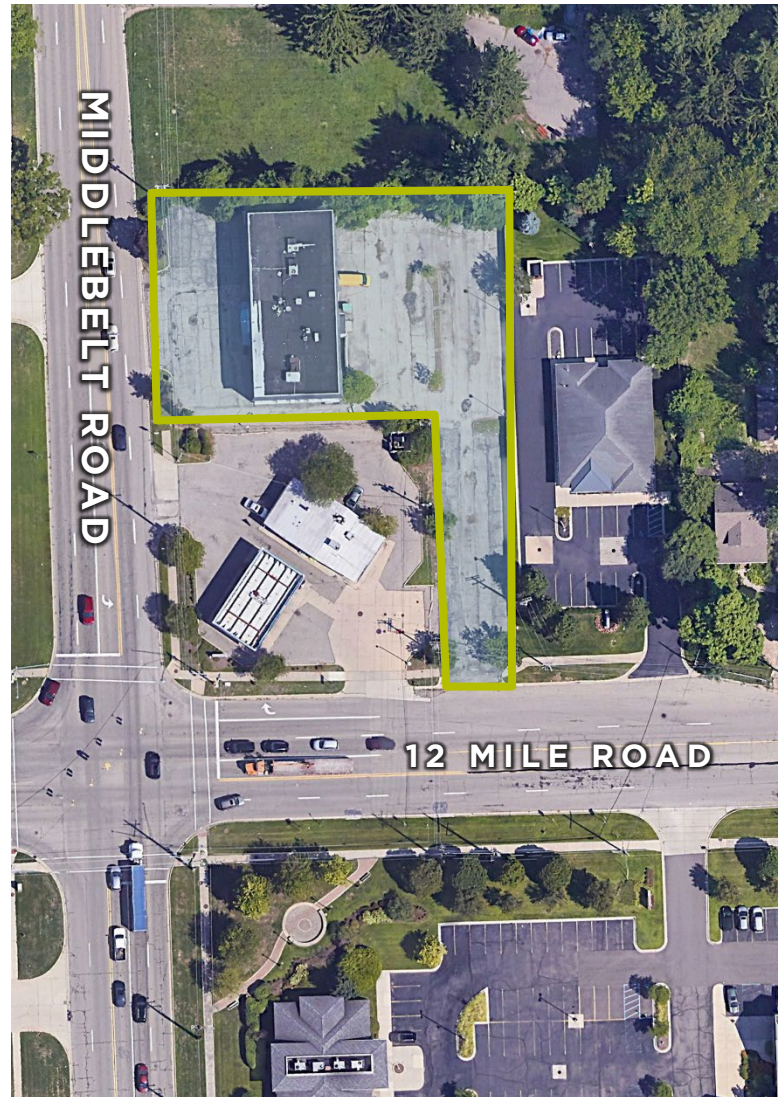


# ABOUT THE BUILDING



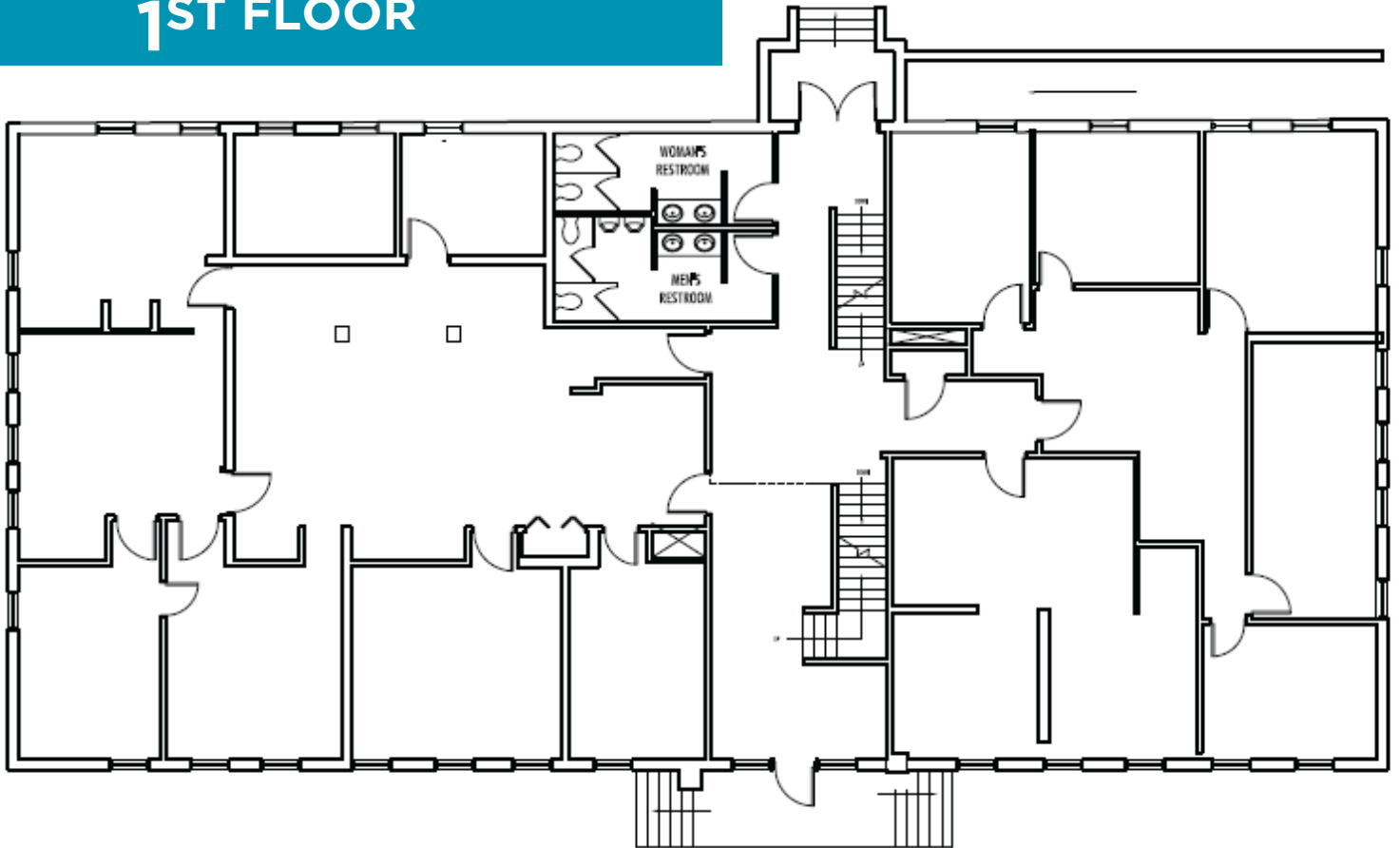
## PROPERTY HIGHLIGHTS

- 10,864 SF For Sale
- Two story building with basement
- Situated on .78 acres
- 62 surface parking spaces
- Easily accessible to I-696
- Excellent visibility from Middlebelt and 12 Mile Road
- Asking price: \$600,000

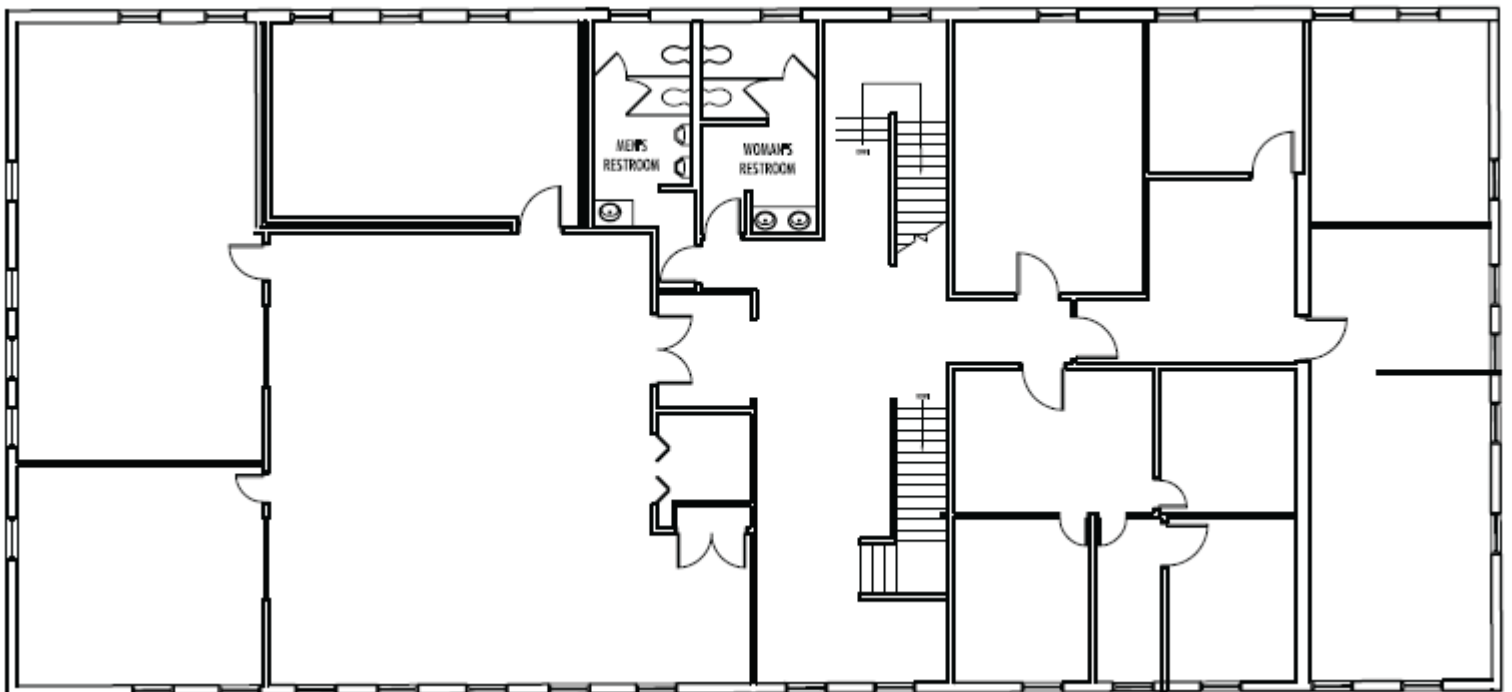


# FLOORPLANS

## 1ST FLOOR

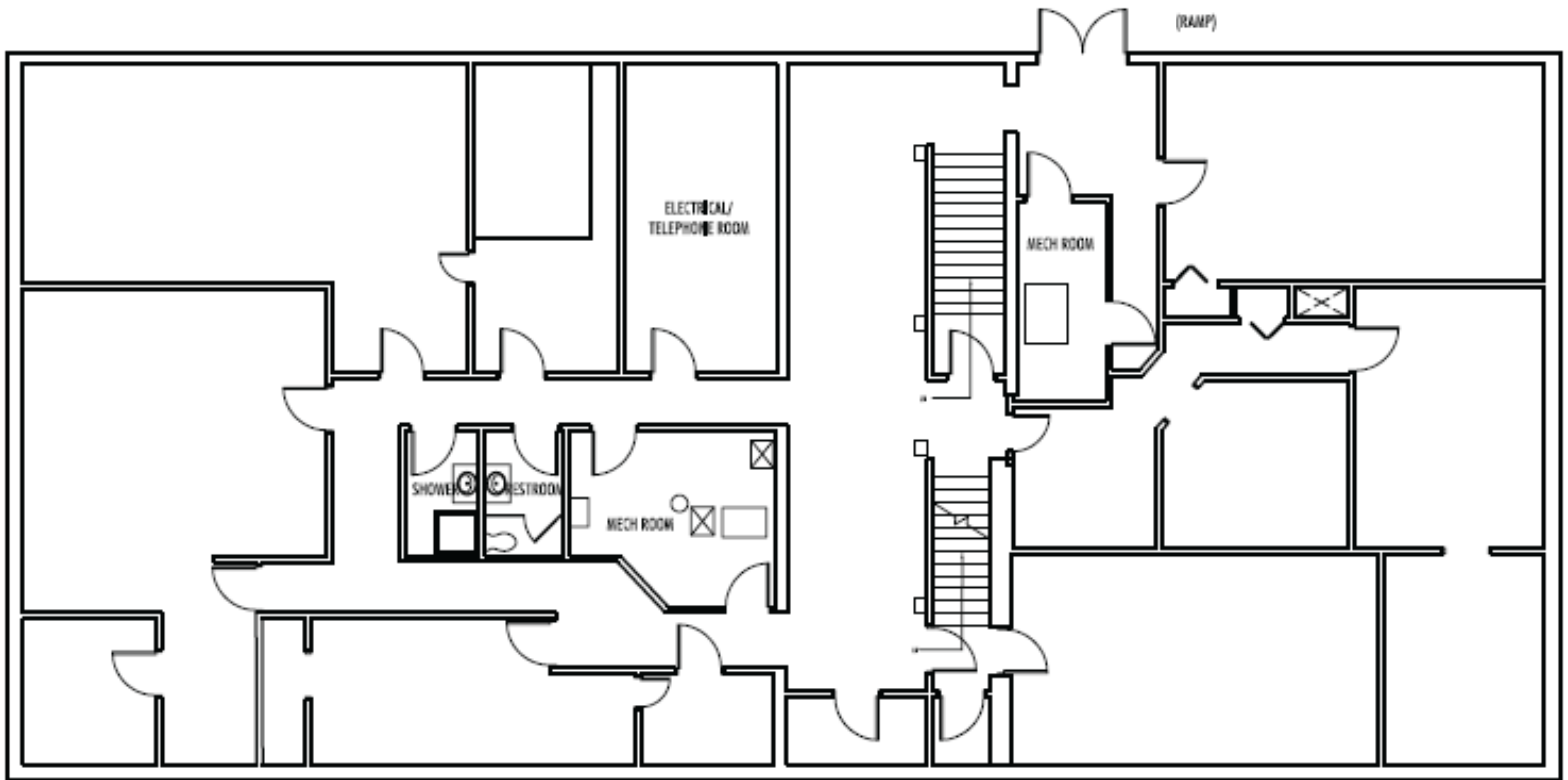


## 2ND FLOOR



# FLOORPLANS

## BASEMENT





# LOCATION



## 28000 Middlebelt, Farmington Hill AMENITY MAP

### Restaurants

- 1 Papa's Pizza & BBQ
- 2 Jiang Nan Noodle House
- 3 La Marsa
- 4 Peterlins
- 5 Savvy Sliders
- 6 Lena's Kitchen
- 7 Boneyard Bq
- 8 Taco Bell
- 9 Nicky D's Coney Island
- 10 Northville Sports Den

### Local and National Retailers

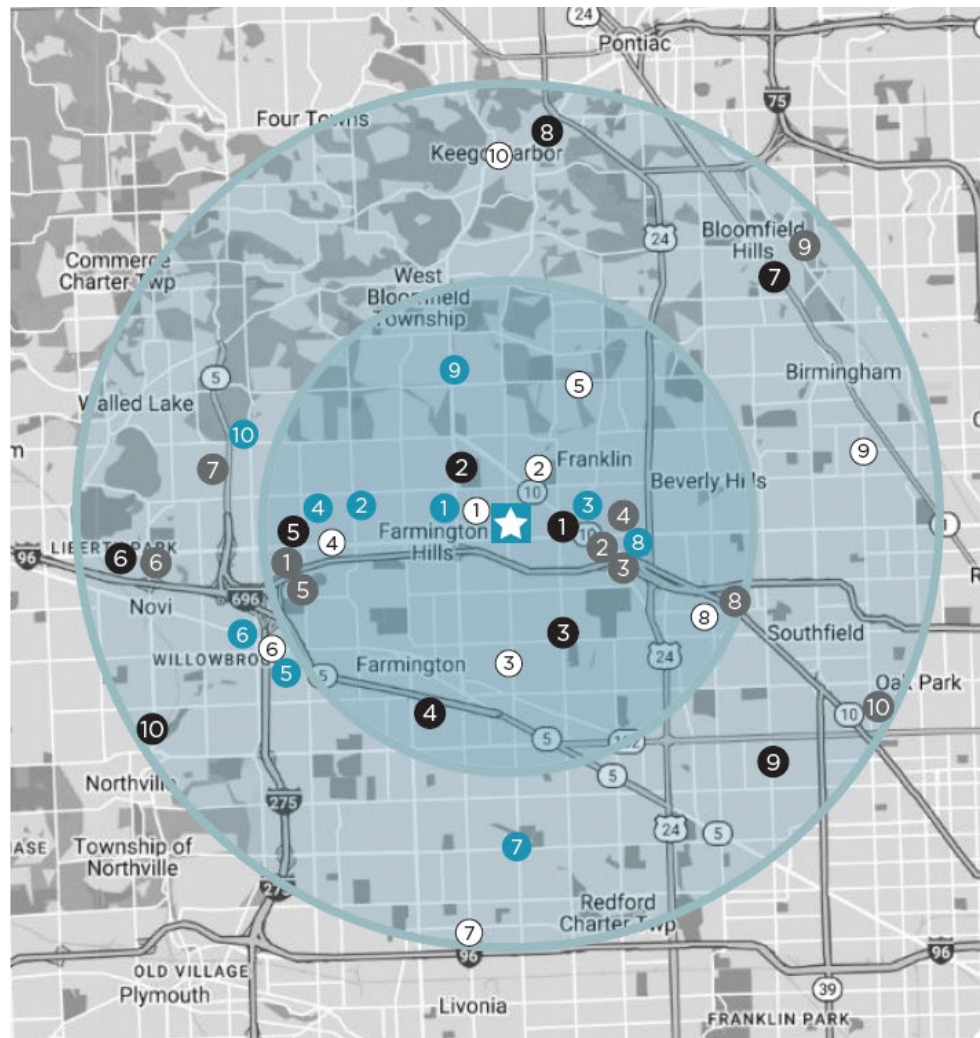
- 1 Verizon
- 2 Eastgate Shopping Center
- 3 Target
- 4 Simon's Sundry Shop
- 5 OMEGA
- 6 ModInteractive
- 7 K/E Electrical Supplies
- 8 Barnes & Noble College Booksellers
- 9 T-Mobile
- 10 Lakepoint Market

### Hotels

- 1 Extended Stay America
- 2 Southfield Stay Hotel
- 3 Hilton Garden Inn Detroit
- 4 HomeTowne Studios Southfield
- 5 Comfort Inn
- 6 Courtyard by Marriott Detroit
- 7 Tru by Hilton Novi Detroit
- 8 Hampton Inn by Hilton Detroit
- 9 The Kingsley Bloomfield Hills
- 10 American Inn & Suites

### Fitness Center

- 1 Studio88 Pole Fitness
- 2 Farmington Family YMCA
- 3 Planet Fitness
- 4 Anytime Fitness
- 5 Crunch Fitness
- 6 Mid American Fitness
- 7 My Time Women Fitness
- 8 Franklin Athletic Club
- 9 CelyFit
- 10 Motiv8 Fitness



## DEMOGRAPHICS WITHIN 3 MILES

192,240

Population

\$79,655

Median Household  
Income

50%

Of Population has a  
Bachelor or Advanced  
Degree

### CONTACT

#### ALBERT ELLIS

Senior Associate

+1 248 358 6111

albert.ellis@cushwake.com

27777 Franklin Road, Suite 1050

Southfield, MI 48034

+1 248 358 6100

cushmanwakefield.com