

12121 SCRIPPS SUMMIT DR

San Diego, CA 92131

14,362 SF SPACE AVAILABLE FOR SUBLEASE



LEASE RATE
\$2.75 +E

RATE REDUCED
\$2.25 +E

Mike Novkov / mike.novkov@cushwake.com / +1 858 546-5412
Nick Bourdette / nick.bourdette@cushwake.com / +1 760 454-6978



©2024 Cushman & Wakefield. All rights reserved. The information contained in this communication is strictly confidential. This information has been obtained from sources believed to be reliable but has not been verified. NO WARRANTY OR REPRESENTATION, EXPRESS OR IMPLIED, IS MADE AS TO THE CONDITION OF THE PROPERTY (OR PROPERTIES) REFERENCED HEREIN OR AS TO THE ACCURACY OR COMPLETENESS OF THE INFORMATION CONTAINED HEREIN, AND SAME IS SUBMITTED SUBJECT TO ERRORS, OMISSIONS, CHANGE OF PRICE, RENTAL OR OTHER CONDITIONS, WITHDRAWAL WITHOUT NOTICE, AND TO ANY SPECIAL LISTING CONDITIONS IMPOSED BY THE PROPERTY OWNER(S). ANY PROJECTIONS, OPINIONS OR ESTIMATES ARE SUBJECT TO UNCERTAINTY AND DO NOT SIGNIFY CURRENT OR FUTURE PROPERTY PERFORMANCE.

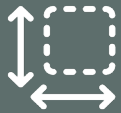
[CUSHMANWAKEFIELD.COM](https://www.cushmanwakefield.com)

12121 SCRIPPS SUMMIT DR

San Diego, CA 92131

PROPERTY HIGHLIGHTS

14,362 SF / For Sublease



14,362 SF



\$2.25 SF +
Electricity



Sublease Term
Thru
February 28, 2030



Fully Furnished



Small Electronics
Lab



Plug n Play



FF&E
Available



New Tenant
Improvements



Exceptional Window
Line & Views



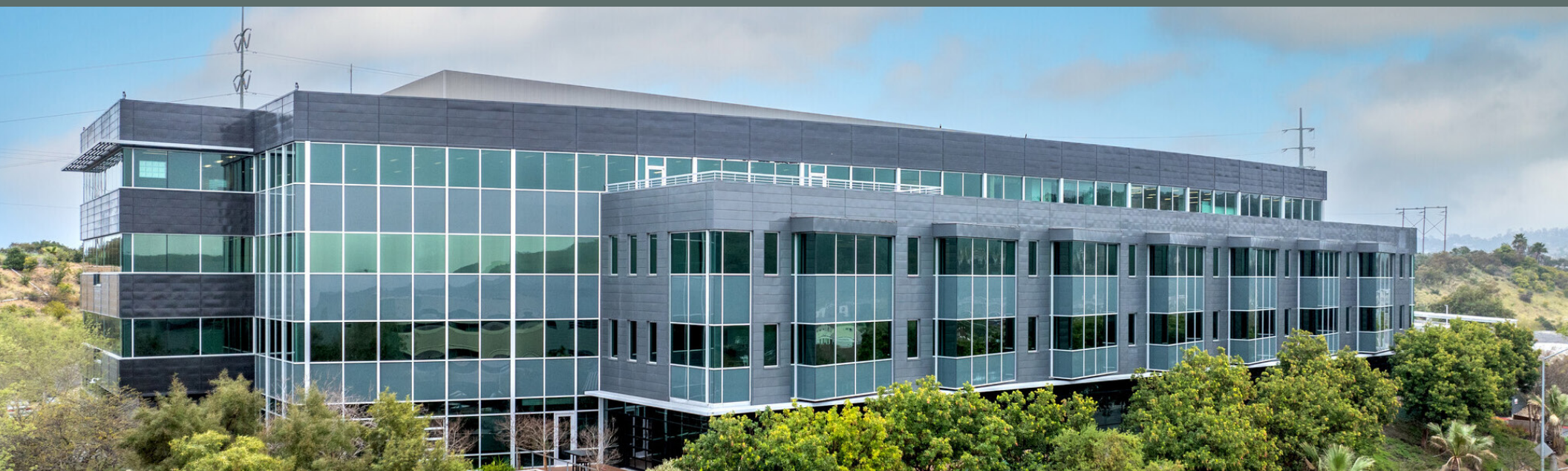
Class A
Office Space



Very Stable
Sublessor



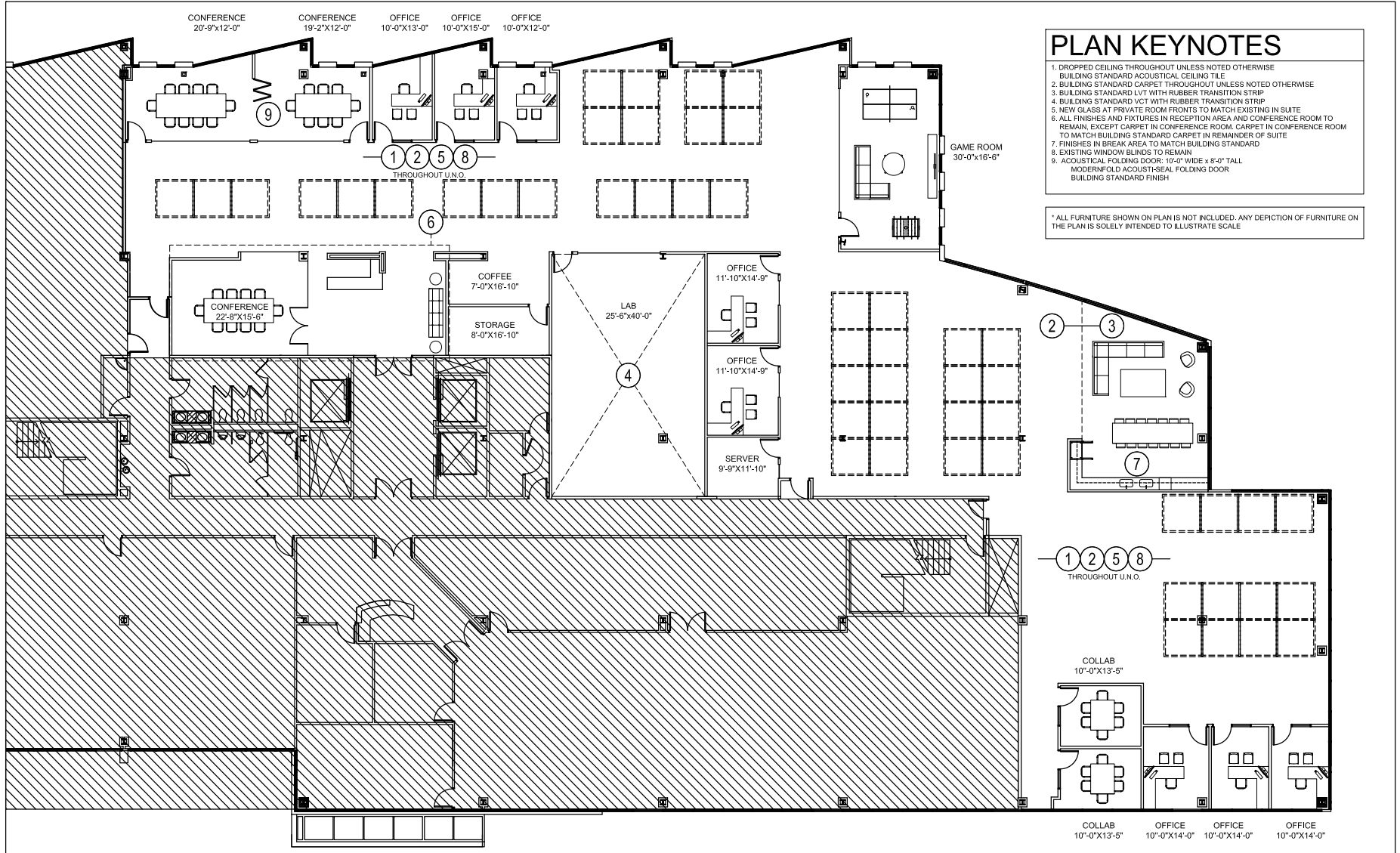
Move-In
Ready



12121 SCRIPPS SUMMIT DR

San Diego, CA 92131

FLOOR PLAN

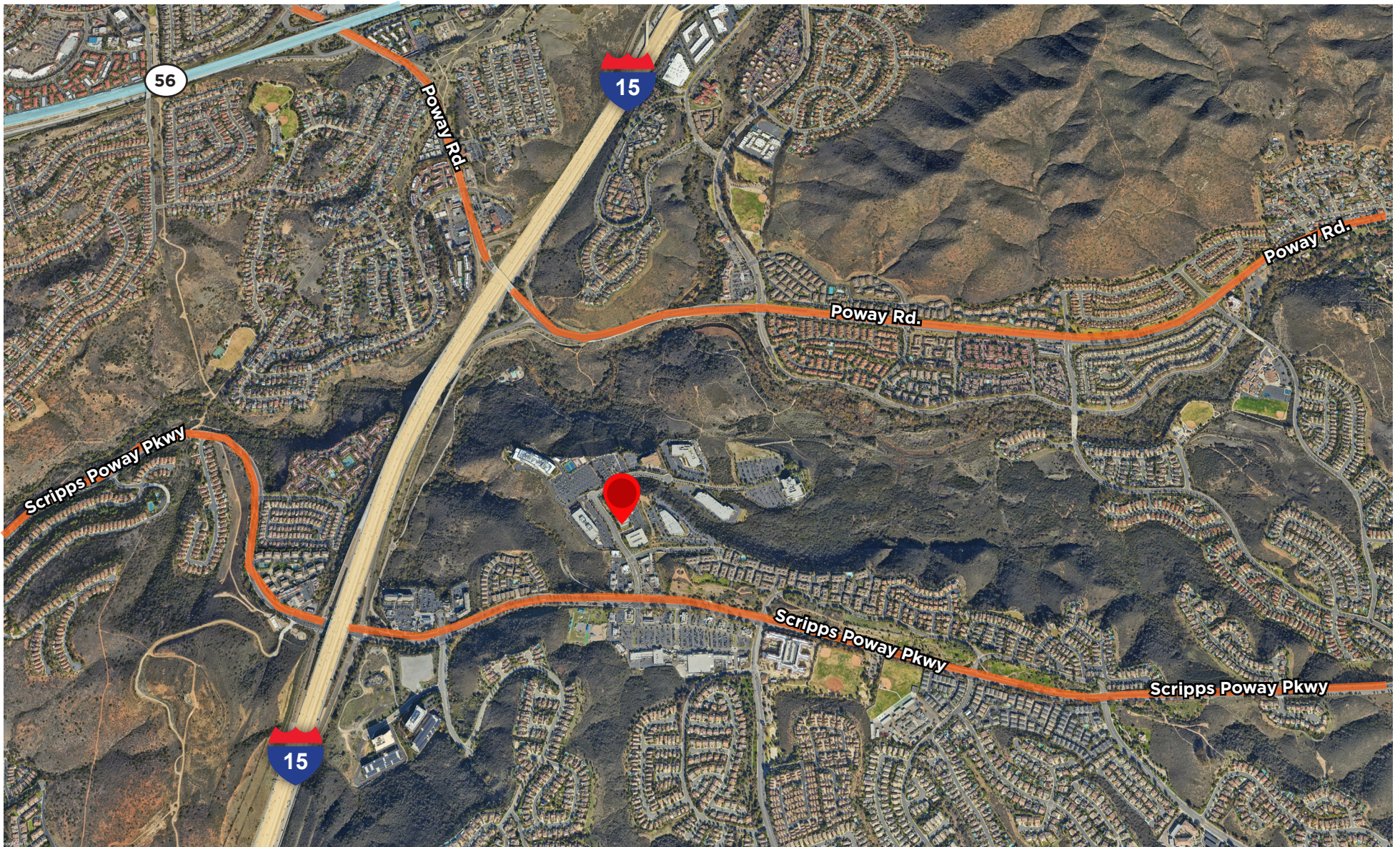


12121 SCRIPPS SUMMIT DR

San Diego, CA 92131

AERIAL MAP

Easy Highway Access



12121 SCRIPPS SUMMIT DR

San Diego, CA 92131

PROPERTY PHOTOS



12121 SCRIPPS SUMMIT DR

San Diego, CA 92131

14,362 SF AVAILABLE

Mike Novkov / mike.novkov@cushwake.com / +1 858 546-5412 / CA Lic 01890388

Nick Bourdette / nick.bourdette@cushwake.com / +1 760 454-6978 / CA Lic 02199505

CUSHMANWAKEFIELD.COM



©2024 Cushman & Wakefield. All rights reserved. The information contained in this communication is strictly confidential. This information has been obtained from sources believed to be reliable but has not been verified. NO WARRANTY OR REPRESENTATION, EXPRESS OR IMPLIED, IS MADE AS TO THE CONDITION OF THE PROPERTY (OR PROPERTIES) REFERENCED HEREIN OR AS TO THE ACCURACY OR COMPLETENESS OF THE INFORMATION CONTAINED HEREIN, AND SAME IS SUBMITTED SUBJECT TO ERRORS, OMISSIONS, CHANGE OF PRICE, RENTAL OR OTHER CONDITIONS, WITHDRAWAL WITHOUT NOTICE, AND TO ANY SPECIAL LISTING CONDITIONS IMPOSED BY THE PROPERTY OWNER(S). ANY PROJECTIONS, OPINIONS OR ESTIMATES ARE SUBJECT TO UNCERTAINTY AND DO NOT SIGNIFY CURRENT OR FUTURE PROPERTY PERFORMANCE.