



**PLUG AND PLAY**  
**FULLY FURNISHED OFFICE SPACE**

**THE EAST END**  
1200 E. Market Street, Akron, Ohio 44305



# THE EAST END



1200 E. Market Street, Akron, Ohio 44305

## AVAILABLE SPACE

Building B	Floor 6	65,718 SF
Building B	Floor 7	47,483 SF
Building C	Floor 6	17,377 SF
Building C	Floor 7	18,214 SF
Building C	Floor 2	5,145 SF

## SUBLEASE RATE:

Negotiable

Term through 12/31/2034

## COMMENTS

- Partial or entire suite for sublease
- State of the art HQ space
- Building amenities include: wine bar with outdoor seating terrace, golf simulator, fitness center, free surface parking and executive climate controlled garage, attractive living/apartments
- On-campus retail tenants include Starbucks, Pita Pit, Handel's Ice Cream and the Hilton Garden Inn with conference center





# THE EAST END

1200 E. Market Street, Akron, Ohio 44305

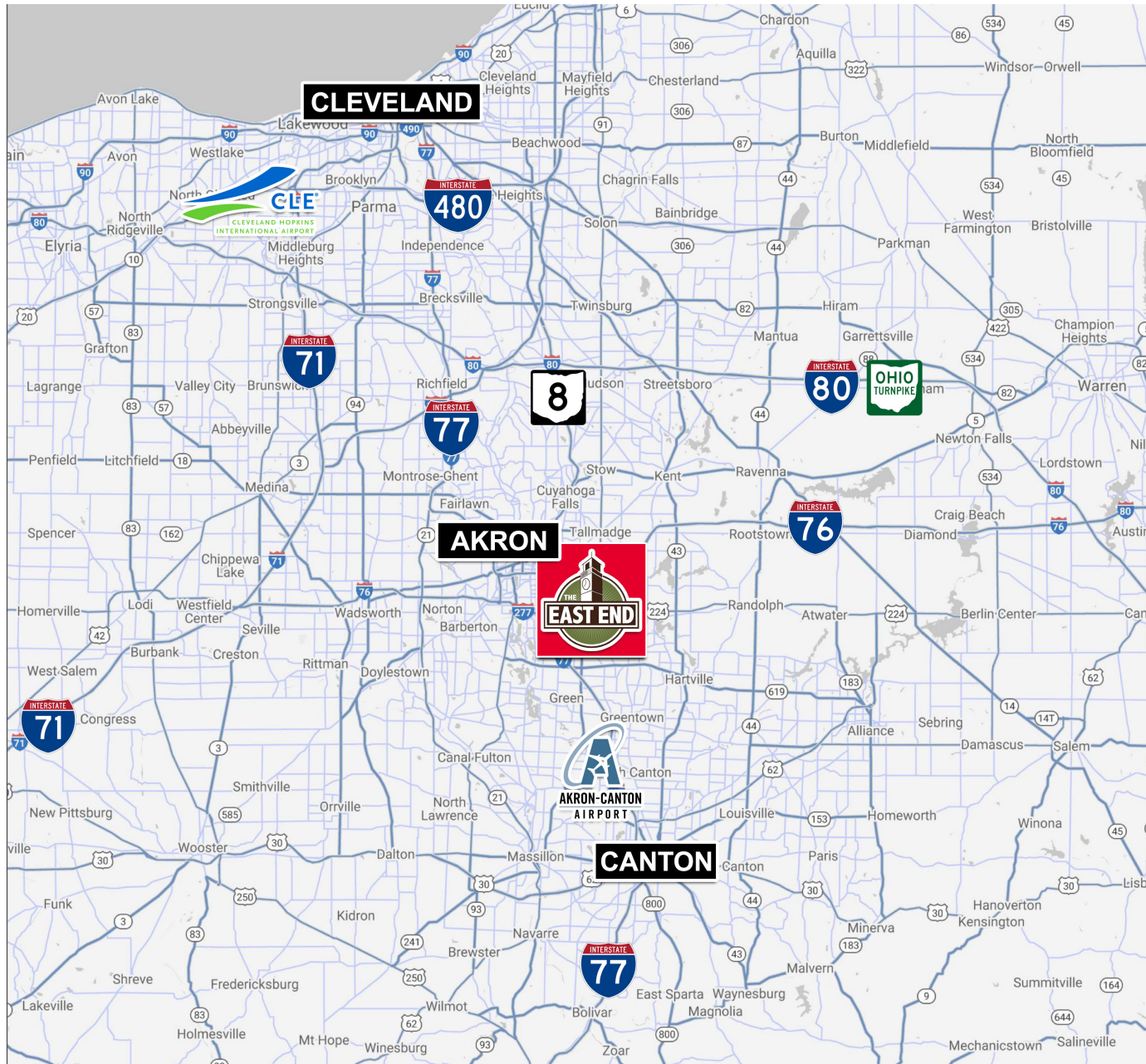




# THE EAST END



1200 E. Market Street, Akron, Ohio 44305



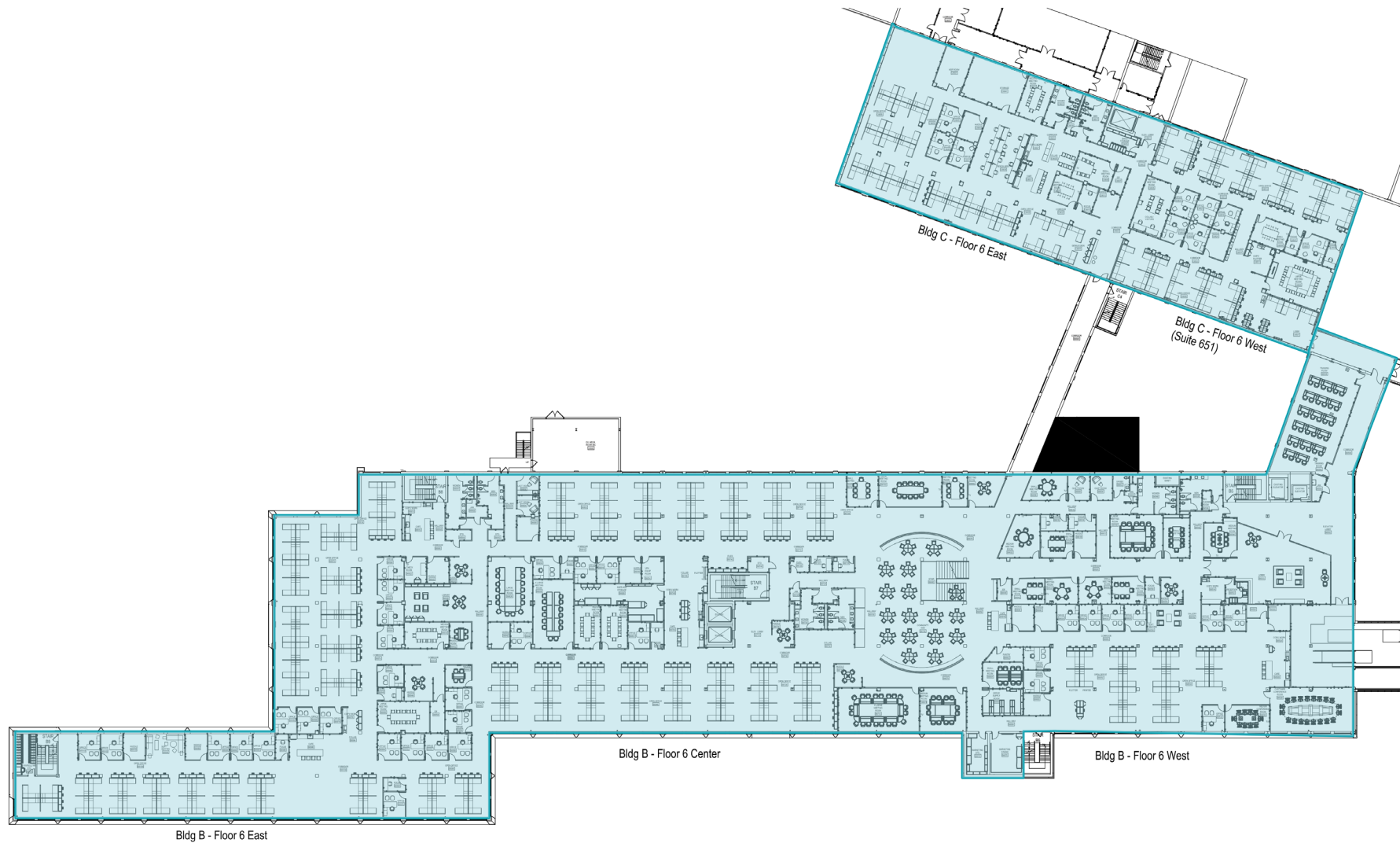


# THE EAST END



1200 E. Market Street, Akron, Ohio 44305

Building B & C - 6th Floor



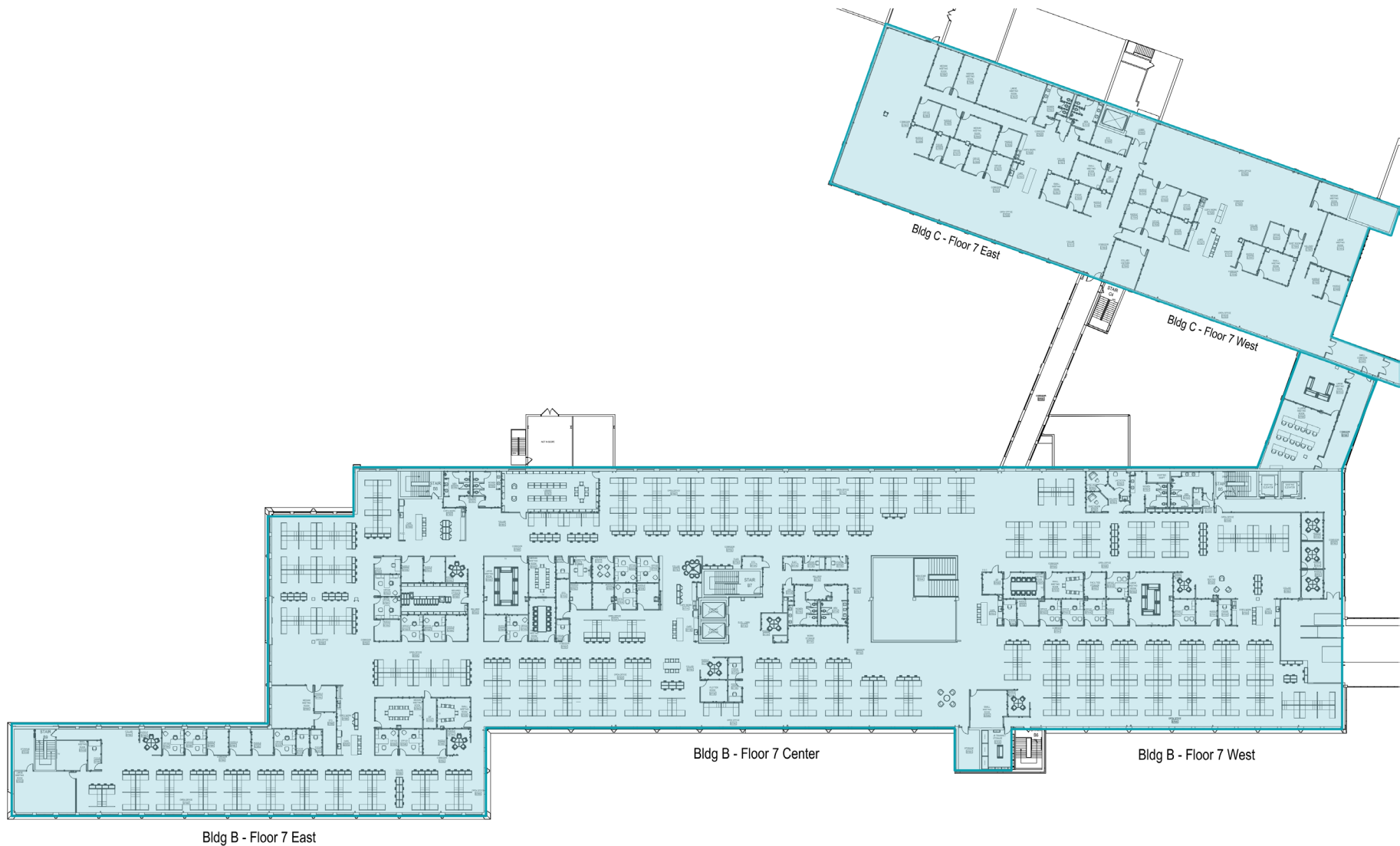


# THE EAST END



1200 E. Market Street, Akron, Ohio 44305

Building B & C - 7th Floor





1200 E. Market Street, Akron, Ohio 44305



The floor plan illustrates the layout of the second floor, featuring several key areas:

- Top Left:** A staircase and a section labeled "POSTAGE EQUIPMENT" with a "FUTURE EQUIP" area.
- Top Center:** A "PROD COPIER W/ SORTER W/ FOLDER W/ PUNCH" and a "CUTTER 50x72".
- Top Right:** Two "SHELVING UNIT W/ 3 SHELVES" (48 X 72) and an "HP T1100 PS PLOTTER".
- Center:** A large "MAIL SERVICES/ O&M MANUALS/ RECORDS C2501" area containing multiple tables (30x60, 30x72, 30 X 72) and a "MAIL SORT" station.
- Bottom Left:** An "EXISTING LOBBY C2511" with "EYEWASH STATION", "MOTORIZED PALLET JACK", and "PALLET" storage.
- Bottom Center:** A "CORRIDOR C2503" connecting to "RECORDS STORAGE C2509" and "LEGAL HOLDS STORAGE C2507".
- Bottom Right:** "LEGAL STORAGE C2505" and "LEGAL HOLDS STORAGE C2507" with various storage units and a "3700 River Widge Lock".
- Right Edge:** A series of small storage units labeled "C2502" through "C2510".





# THE EAST END

1200 E. Market Street, Akron, Ohio 44305





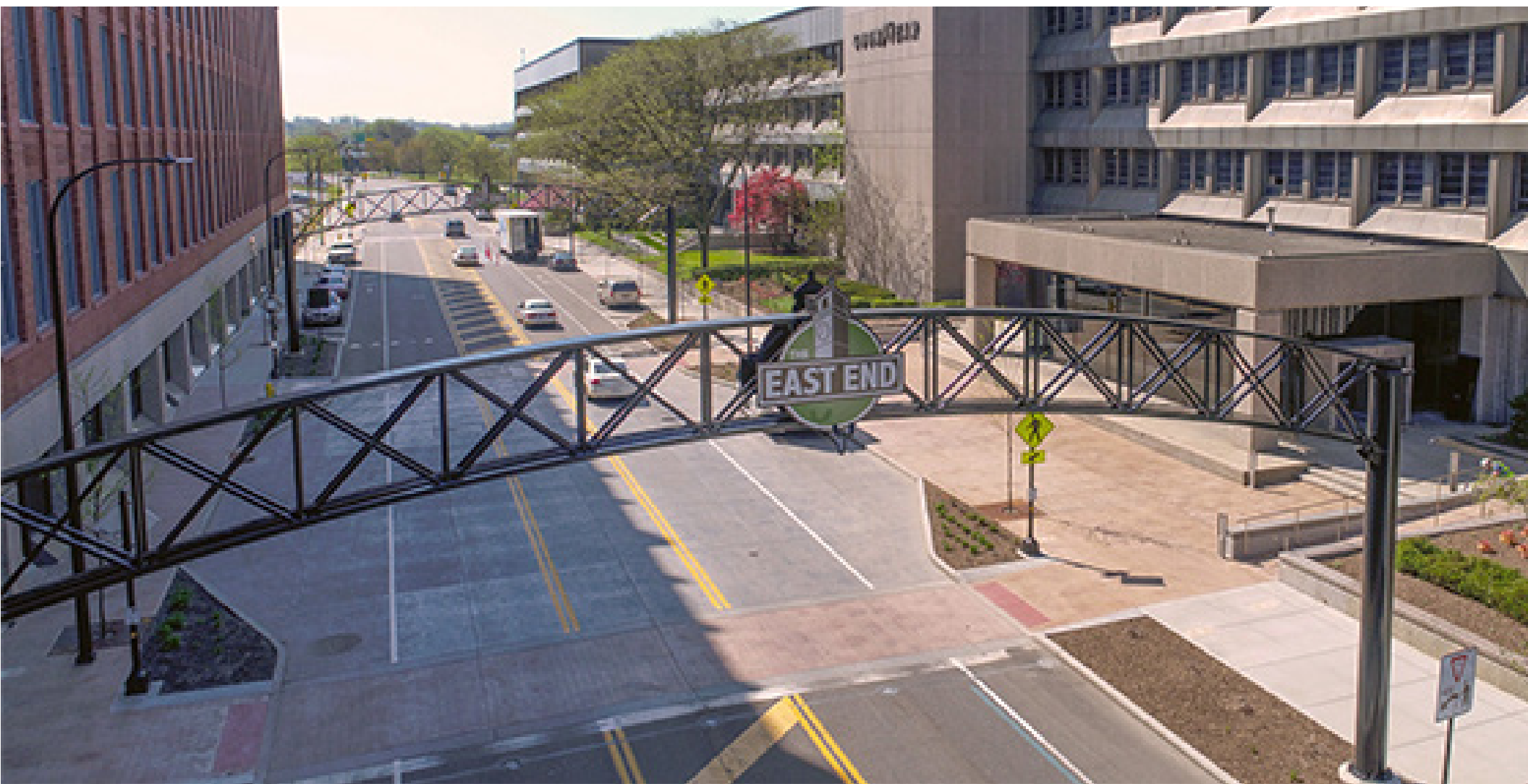


# THE EAST END

1200 E. Market Street, Akron, Ohio 44305







**RICO A. PIETRO, SIOR**  
Principal  
rpietro@crescorealestate.com  
+1 216 525 1473

6100 Rockside Woods Blvd, Suite 200  
Cleveland, Ohio 44131  
Main +1 216 520 1200  
Fax +1 216 520 1828  
**crescorealestate.com**