



FOR SUBLEASE | 15,000 SF

**1600 SHAMES DRIVE**

**WESTBURY, NY**



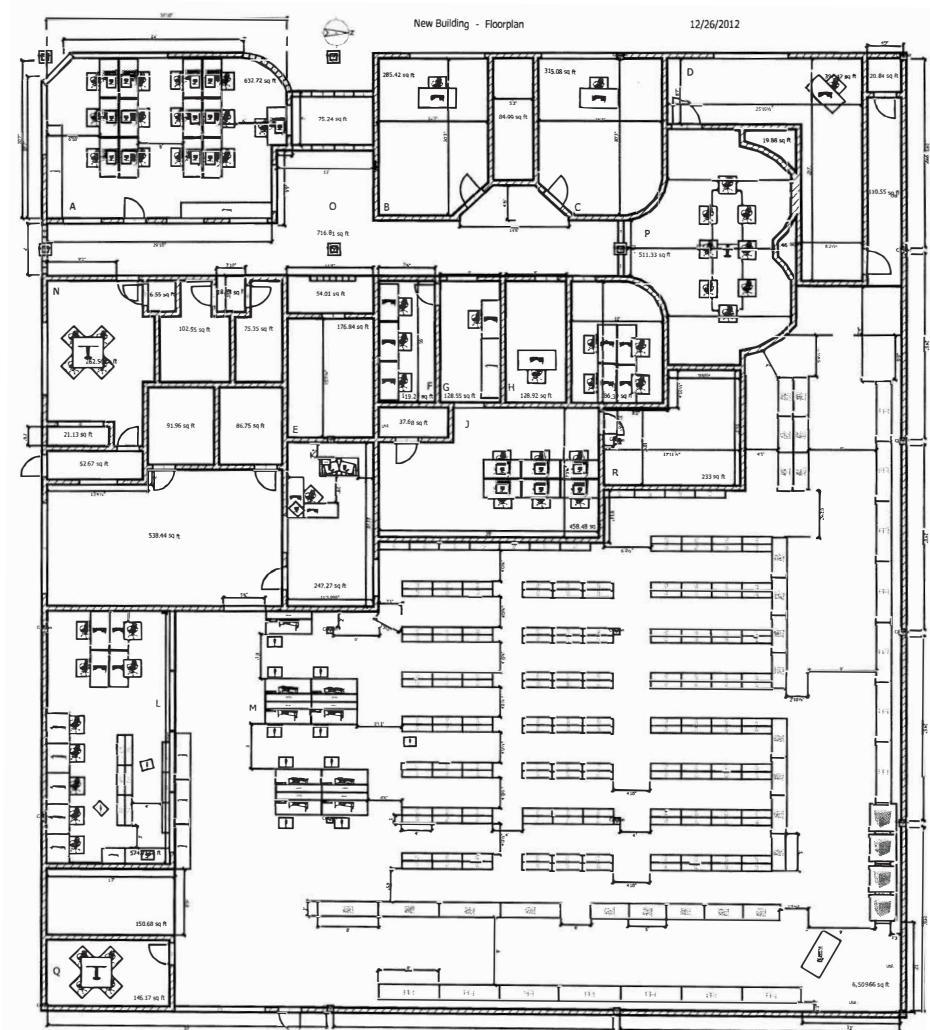


**1600 SHAMES DRIVE**  
**WESTBURY, NY**

## Property Highlights

Building Size:	15,000 SF
Available Space:	15,000 SF
Rent:	Upon Request
Term:	August 2027
Type:	Class C Industrial Building
Parking:	10 Spaces
Comments:	5 min drive to Westbury Station Commuter Rail (Port Jefferson Branch

## Floor Plan







## FOR MORE INFORMATION, CONTACT:

### ROBERT KUPPERSMITH

+1 631 425 1220

[robert.kuppersmith@cushwake.com](mailto:robert.kuppersmith@cushwake.com)

### JENNIFER GRGAS

+1 516 398 6375

[jennifer.grgas@cushwake.com](mailto:jennifer.grgas@cushwake.com)

©2025 Cushman & Wakefield. All rights reserved. The information contained in this communication is strictly confidential. This information has been obtained from sources believed to be reliable but has not been verified. NO WARRANTY OR REPRESENTATION, EXPRESS OR IMPLIED, IS MADE AS TO THE CONDITION OF THE PROPERTY (OR PROPERTIES) REFERENCED HEREIN OR AS TO THE ACCURACY OR COMPLETENESS OF THE INFORMATION CONTAINED HEREIN, AND SAME IS SUBMITTED SUBJECT TO ERRORS, OMISSIONS, CHANGE OF PRICE, RENTAL OR OTHER CONDITIONS, WITHDRAWAL WITHOUT NOTICE, AND TO ANY SPECIAL LISTING CONDITIONS IMPOSED BY THE PROPERTY OWNER(S). ANY PROJECTIONS, OPINIONS OR ESTIMATES ARE SUBJECT TO UNCERTAINTY AND DO NOT SIGNIFY CURRENT OR FUTURE PROPERTY PERFORMANCE.

