

1 MONTH OF FREE RENT FOR EVERY 13 MONTHS OF THE LEASE TERM

SUITES FROM ±1,567 SF - ±5,781 SF FOR LEASE  
\$2.30 PSF FULL SERVICE



1701 NOVATO BLVD  
CITY CENTER  
...  
NOVATO, CA

For More Information, Please Contact:

**Steven Leonard**  
Managing Director  
+1 415 722 1080  
[steven.leonard@cushwake.com](mailto:steven.leonard@cushwake.com)  
Lic #: 00909604

**Drew Soltis**  
Associate  
+1 415 451 2415  
[drew.soltis@cushwake.com](mailto:drew.soltis@cushwake.com)  
Lic #: 02163430



## PROPERTY HIGHLIGHTS

- Very well maintained three story elevator served office building
- Building conference room
- Abundant exterior glass
- Flexible floorplans
- Quiet setting
- Shared conference room with kitchenette
- Large outdoor deck
- Located at the southwest corner of Novato Blvd & Tamalpais Ave.
- One block from Grant Avenue amenities
- Approx. 113 onsite parking spaces
- Golden Gate Transit stop nearby
- Total building  $\pm 38,834$  SF





## AVAILABILITIES

SUITE	SF
100	± 5,781 SF
107	± 3,147 SF
204	± 1,742 SF
205	± 3,561 SF
303	± 1,567 SF
304	± 1,824 SF
<b>Total Available</b>	<b>± 17,622 SF</b>

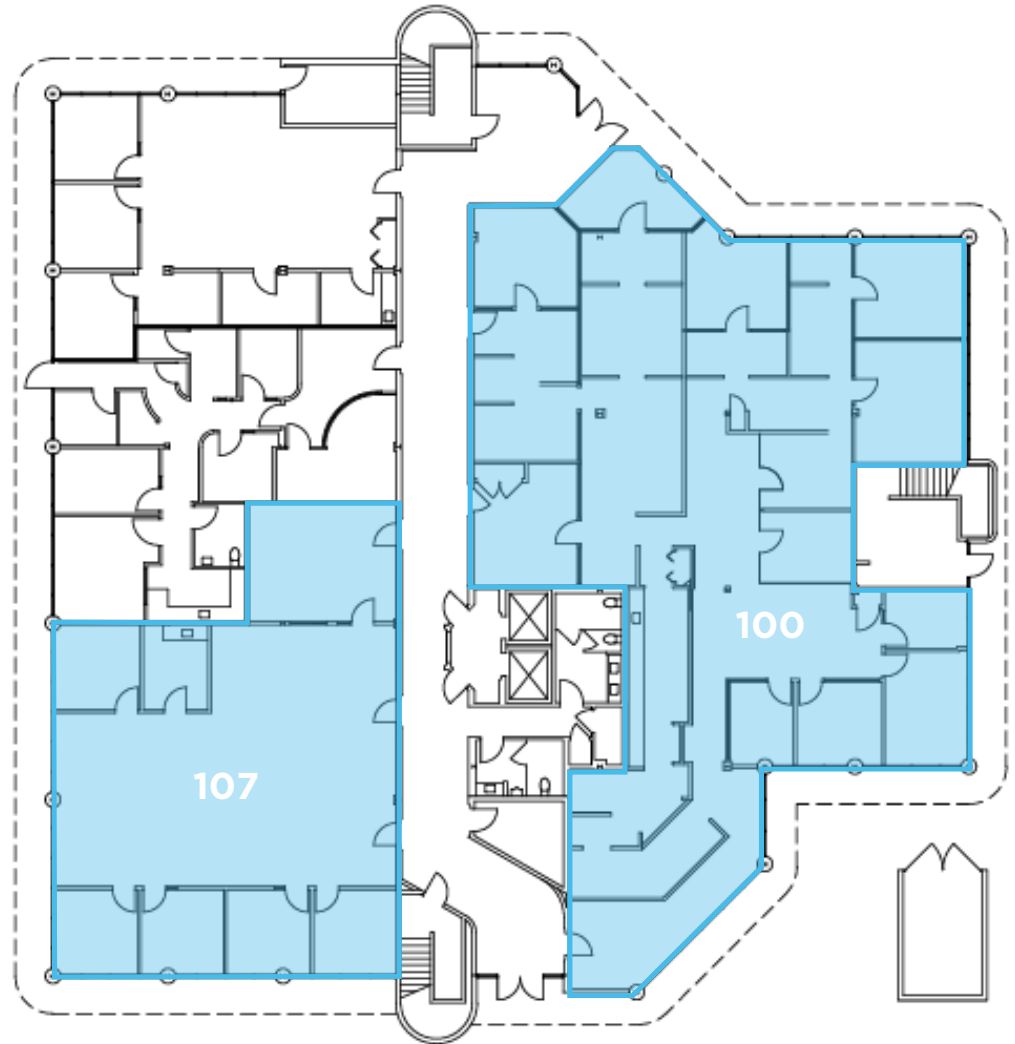
# 1ST FLOOR PLAN

Suite 100

± 5,781 SF

Suite 107

± 3,147 SF



1701 NOVATO BLVD  
CITY CENTER  
...  
NOVATO, CA

For More Information, Please Contact:

**Steven Leonard**  
Managing Director  
+1 415 722 1080  
[steven.leonard@cushwake.com](mailto:steven.leonard@cushwake.com)  
Lic #: 00909604

**Drew Soltis**  
Associate  
+1 415 451 2415  
[drew.soltis@cushwake.com](mailto:drew.soltis@cushwake.com)  
Lic #: 02163430

# 2ND FLOOR PLAN

Suite 204\*

± 1,742 SF

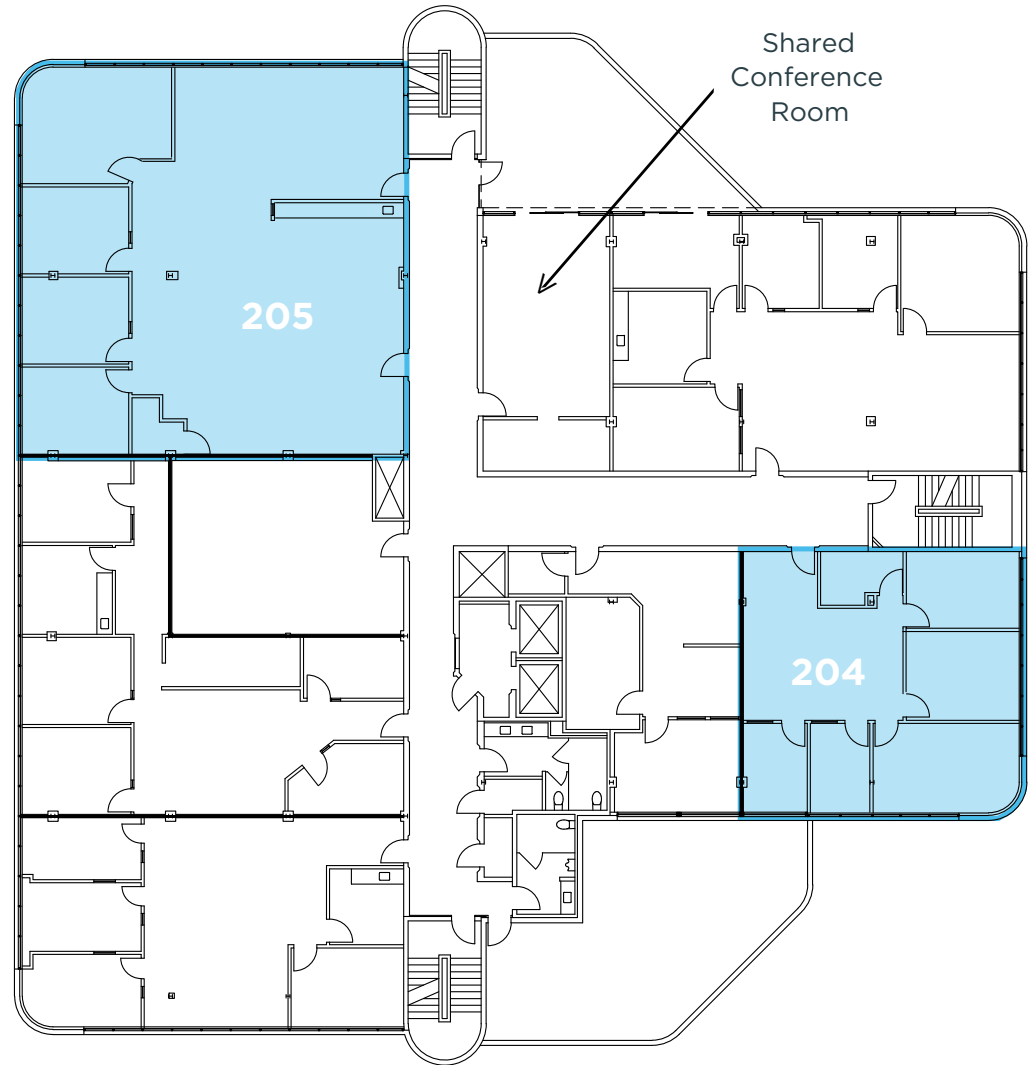


Suite 205\*

± 3,561 SF



Shared Conference Room



1701 NOVATO BLVD  
CITY CENTER  
...  
NOVATO, CA

For More Information, Please Contact:

**Steven Leonard**  
Managing Director  
+1 415 722 1080  
[steven.leonard@cushwake.com](mailto:steven.leonard@cushwake.com)  
Lic #: 00909604

**Drew Soltis**  
Associate  
+1 415 451 2415  
[drew.soltis@cushwake.com](mailto:drew.soltis@cushwake.com)  
Lic #: 02163430

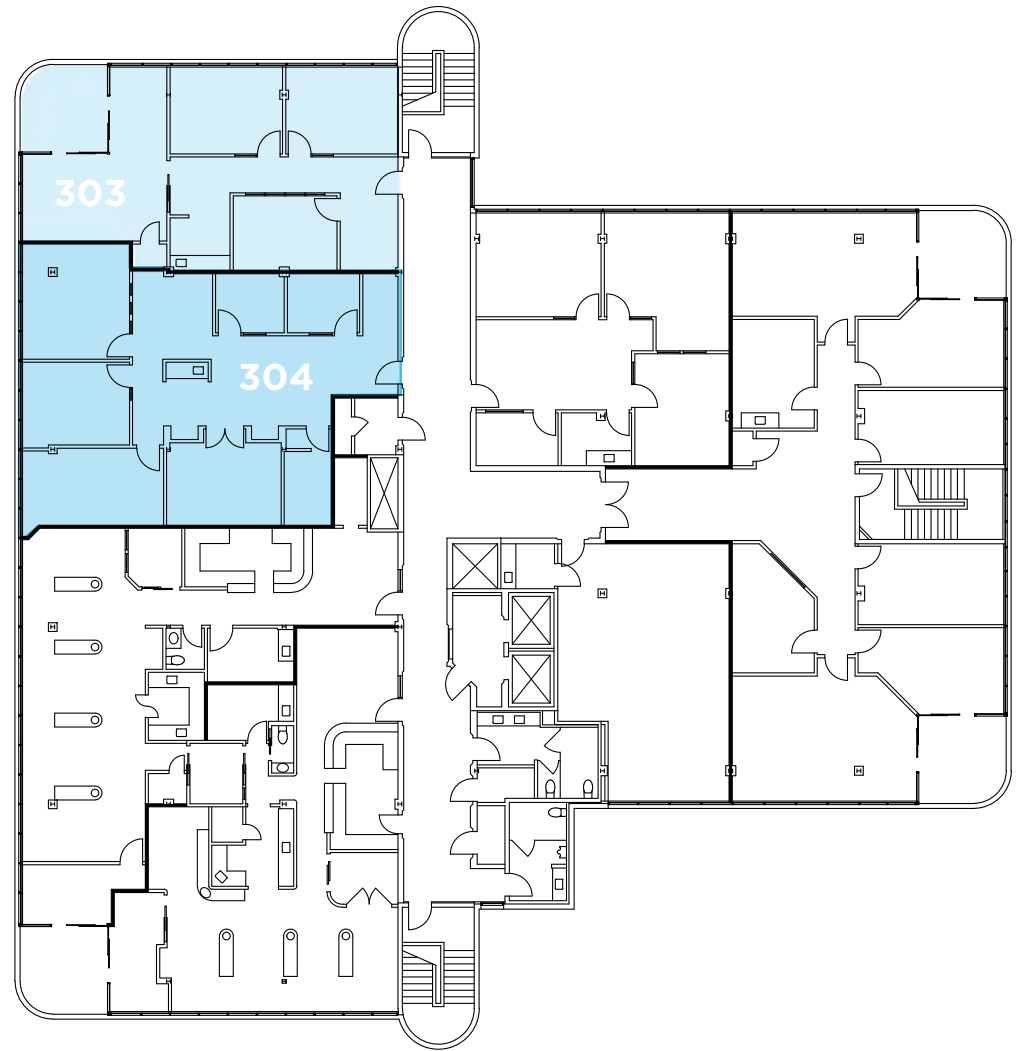
# 3RD FLOOR PLAN

## Suite 303

± 1,567 SF

## Suite 304

± 1,824 SF



For More Information, Please Contact:

**Steven Leonard**  
Managing Director  
+1 415 722 1080  
[steven.leonard@cushwake.com](mailto:steven.leonard@cushwake.com)  
Lic #: 00909604

**Drew Soltis**  
Associate  
+1 415 451 2415  
[drew.soltis@cushwake.com](mailto:drew.soltis@cushwake.com)  
Lic #: 02163430

1701 NOVATO BLVD  
CITY CENTER  
...  
NOVATO, CA

**BUILDING CONFERENCE ROOM**





1701 NOVATO BLVD  
CITY CENTER  
...  
NOVATO, CA

For More Information, Please Contact:

**Steven Leonard**  
Managing Director  
+1 415 722 1080  
[steven.leonard@cushwake.com](mailto:steven.leonard@cushwake.com)  
Lic #: 00909604

**Drew Soltis**  
Associate  
+1 415 451 2415  
[drew.soltis@cushwake.com](mailto:drew.soltis@cushwake.com)  
Lic #: 02163430