

FOR LEASE

8000

10TH ST. E,  
HASTINGS, MN



OWNED BY

**PEAK**  
INVESTMENTS

# Property Information



## ADDRESS

800 10th St.E, Hastings, MN

## SIZE

Office 1,707 SF  
Whse/Prod 96,862 SF  
 Total 98,569 SF\*

\*Includes Approx. 3,373 SF Mezzanine Space.

## SPACE AVAILABLE

12,000 SF - 62,000 SF

## OUTDOOR STORAGE

Fenced Outdoor Storage Available

## LOADING:

5 Dock Doors | 1 Drive-In (Ability to Add More)

## CLEAR HEIGHT

11'-20'

## YEAR BUILT

1960

## SPRINKLER

Yes

## POWER

Heavy

## PARKING

134 Spaces

## ZONING

I-1 Industrial Park

## LEASE RATE

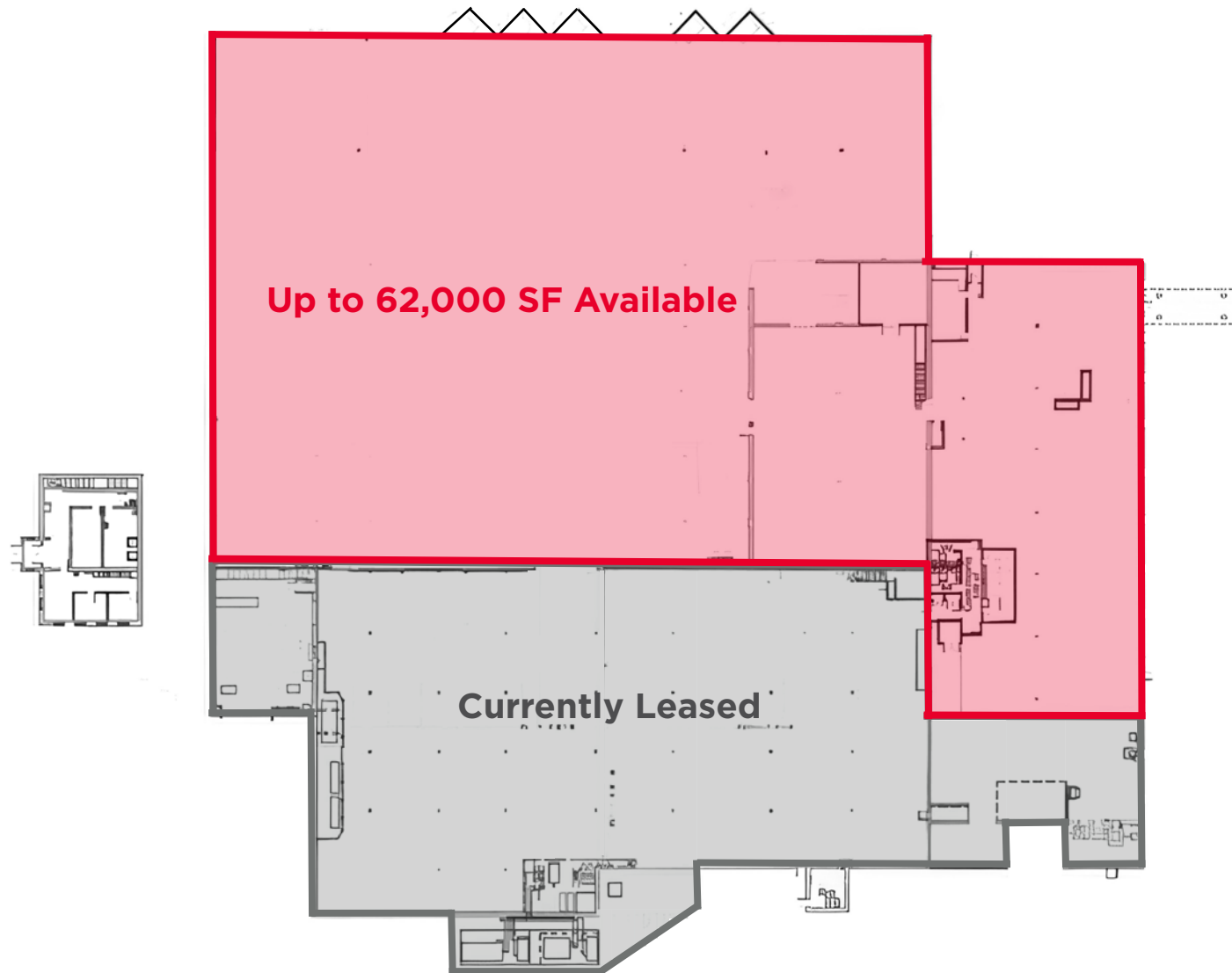
\$5.50 PSF NNN

## 2025 EST. TAX & CAM

\$3.40 PSF



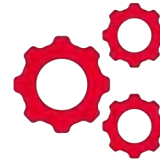
# Floor Plan



# Area Amenities



**Access to High Quality  
South Metro Labor Pool**



**Heavy Power Available  
for Manufacturing Use**

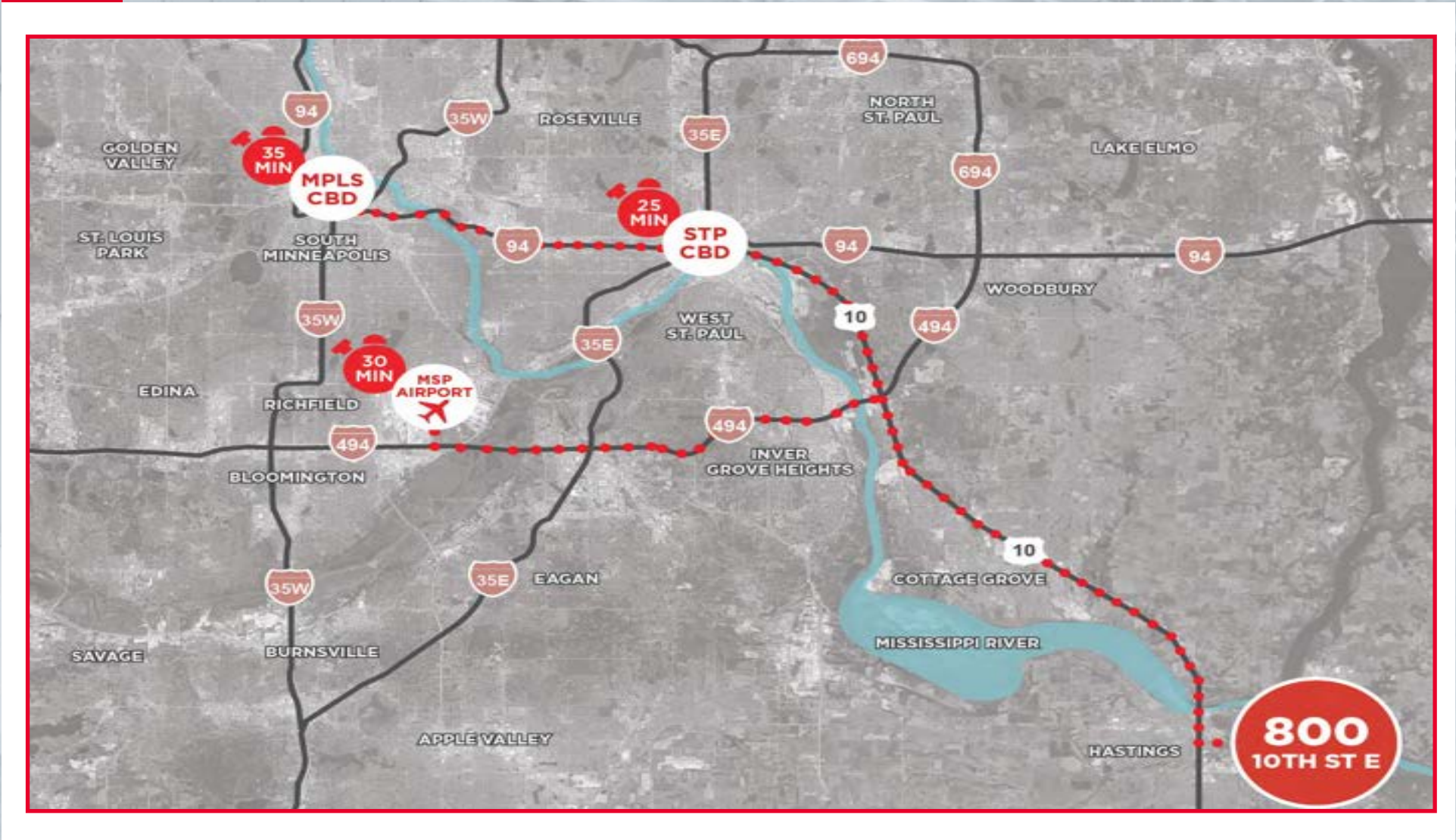


**Fenced & Gated Outdoor  
Storage Available**



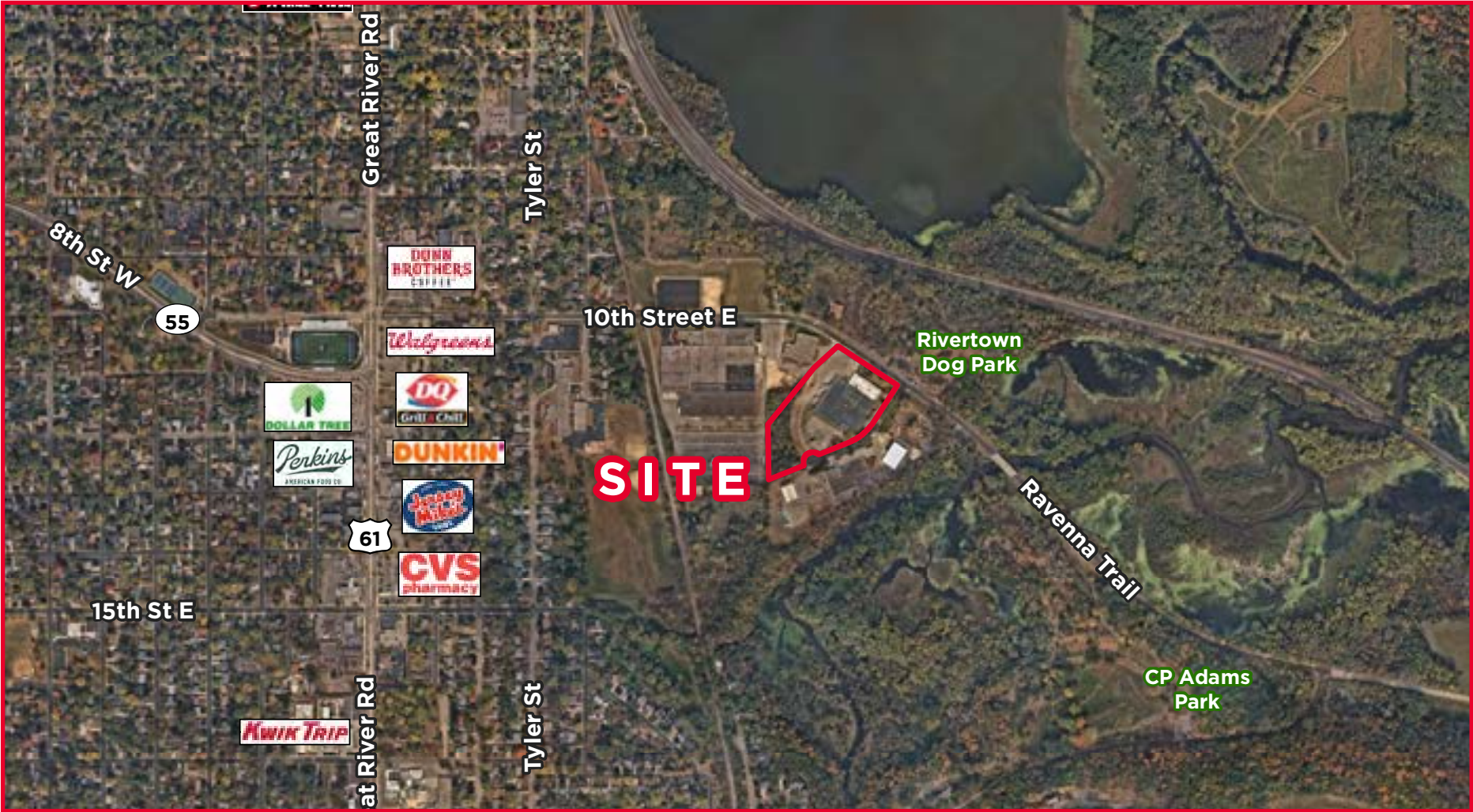
**25-Min Drive Time to St.  
Paul CBD**

# Drive Times





# Property Aerial





# Property Aerial











## Contact

**Jake Kelly**  
Senior Associate  
+1 952 465 3303  
[jake.kelly@cushwake.com](mailto:jake.kelly@cushwake.com)

**Jordan Dick**  
Director  
+1 952 204 7631  
[jordan.dick@cushwake.com](mailto:jordan.dick@cushwake.com)

**Todd Hanson**  
Senior Director  
+1 952 820 8737  
[todd.hanson@cushwake.com](mailto:todd.hanson@cushwake.com)



**CUSHMAN &  
WAKEFIELD**