

HIGH BLUFF RIDGE

12481 + 12531 High Bluff Drive,
San Diego, CA 92130

**New High End Creative Spec
Suites | New Conference Center**



REACH NEW HEIGHTS

Perched prominently on High Bluff Drive, High Bluff Ridge is a Class A office complex that effortlessly blends productivity with the Southern California indoor/outdoor lifestyle.

High Bluff Ridge is committed to wellness from its higher building standards to its fitness center, newly renovated lobbies, outdoor collaboration spaces, new large conference center and walkable amenities. The incredible location off I-5 offers convenient commutes to everything you love in San Diego.





165,658 SF

Two-building Class A corporate office complex



ON-SITE FITNESS CENTER

With shower and locker facilities



PRESTIGIOUS LOCATION

Within Del Mar Heights master planned corporate center



PRIME VISIBILITY & ACCESSIBILITY

Excellent visibility and immediate access from I-5, SR-56, and El Camino Real



LEED CERTIFIED GOLD & WIRED SCORE SILVER

The digital connectivity rating system for real estate



4.0 / 1,000 RSF PARKING

Subterranean and structured parking



EXPANSION OPPORTUNITY

328,134 SF Del Mar office portfolio with immediately local, responsive property management team



WALKABLE AMENITIES

Walking distance to upscale dining and retail at One Paseo and Del Mar Highlands Town Center / Sky Deck Restaurant Collective

AVAILABILITY

BLDG. 12481	Suite 220	4,411 RSF	Creative Spec Suite
BLDG. 12531	Suite 140	3,679 RSF	Spec Suite
BLDG. 12531	Suite 150	5,947 RSF	Creative Spec Suite; Eyebrow Signage Available
BLDG. 12531	3rd Floor	4,136 - 15,768 RSF	



LOCATED IN DEL MAR HEIGHTS



UPGRADE YOUR OFFICE EXPERIENCE

ONE PASEO

- CAVA
- URBN Pizza
- Postino
- Nick's
- South of Nick's
- North Italia
- Salt & Straw
- Pigment
- Lululemon
- Sweetfin
- Goop Kitchen
- BodyRok

PIAZZA CARMEL

- Villa Capri
- Spices Thai Café
- Gami Sushi
- Chipotle
- Subway
- Wells Fargo
- Pavillions
- Baskin Robbins
- Pick-Up Stix
- Postal Annex
- F45 Training
- Allurant Med Spa

DEL MAR HIGHLANDS TOWN CENTER

- Philz Coffee
- Mendocino Farms
- Sky Deck
- Sweetgreen
- Cinepolis
- Ralph's
- Jimbo's
- Snooze Eatery
- Dry Bar
- Steak 48
- Pvolve
- Vuori



BEACHSIDE DEL MAR

- Vons
- Bushfire Kitchen
- CVS Pharmacy
- Starbucks
- Le Bambou
- SeaSurf Fish Co
- Crème & Sugar
- Broken Yolk Café
- Pilates Republic
- Jersey Mike's

HOTELS & MEETING SPACES

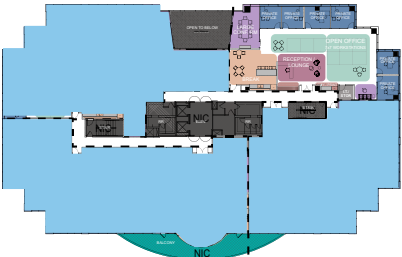
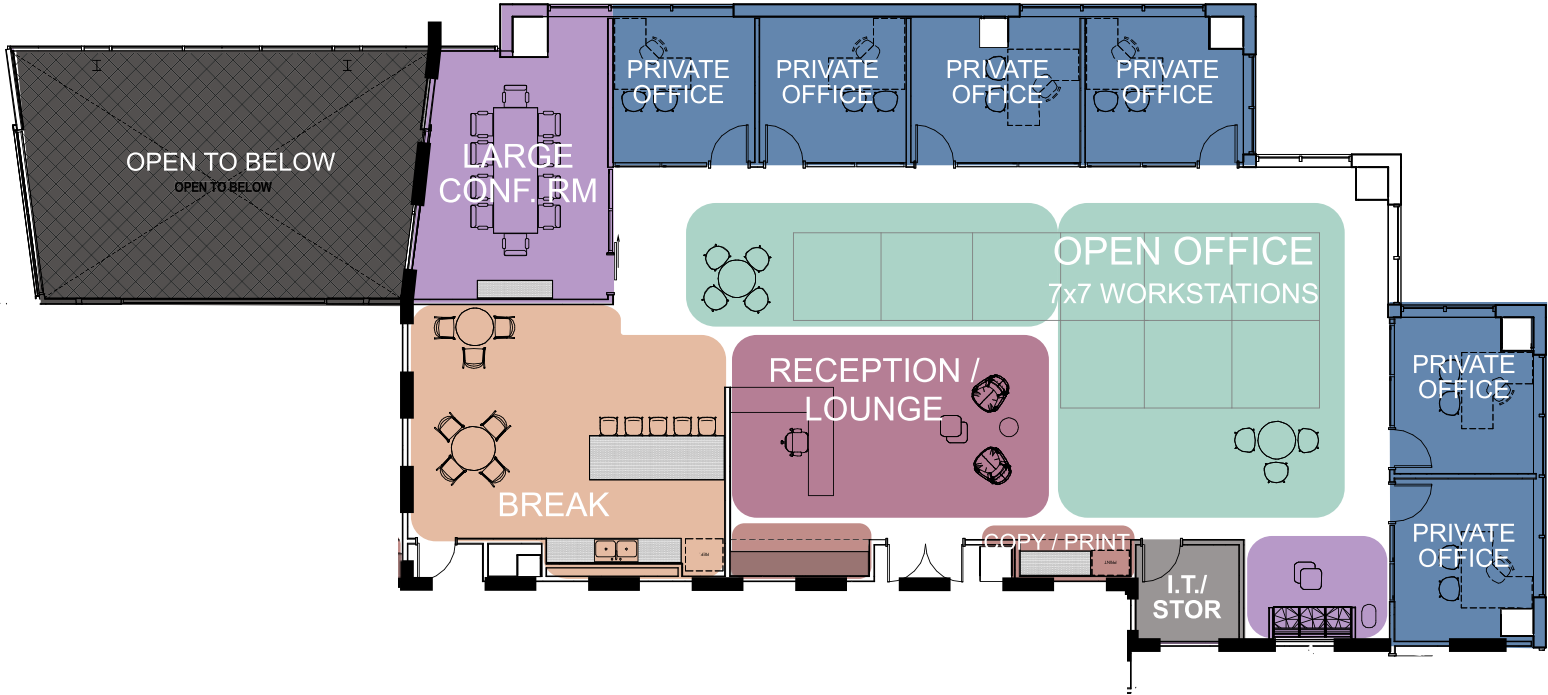
- Marriott Del Mar
- Residence Inn by Marriott
- Hampton Inn
- DoubleTree Resort

CARMEL VALLEY RECREATION CENTER

- Indoor Multipurpose Courts
- Outdoor Fitness Stations
- Game Room with Table Tennis
- Picnic Areas with Barbecues
- Outdoor Basketball Courts
- Tennis Courts
- Amphitheater
- Two Playgrounds

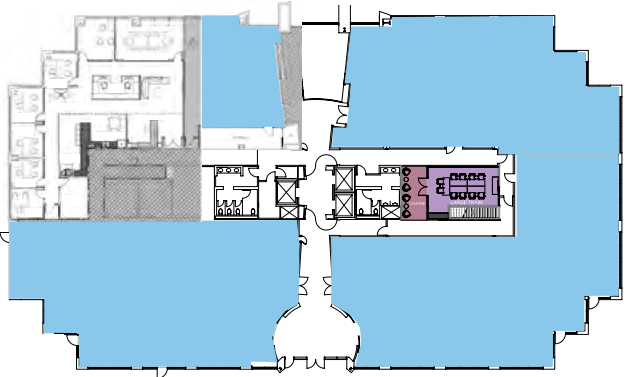
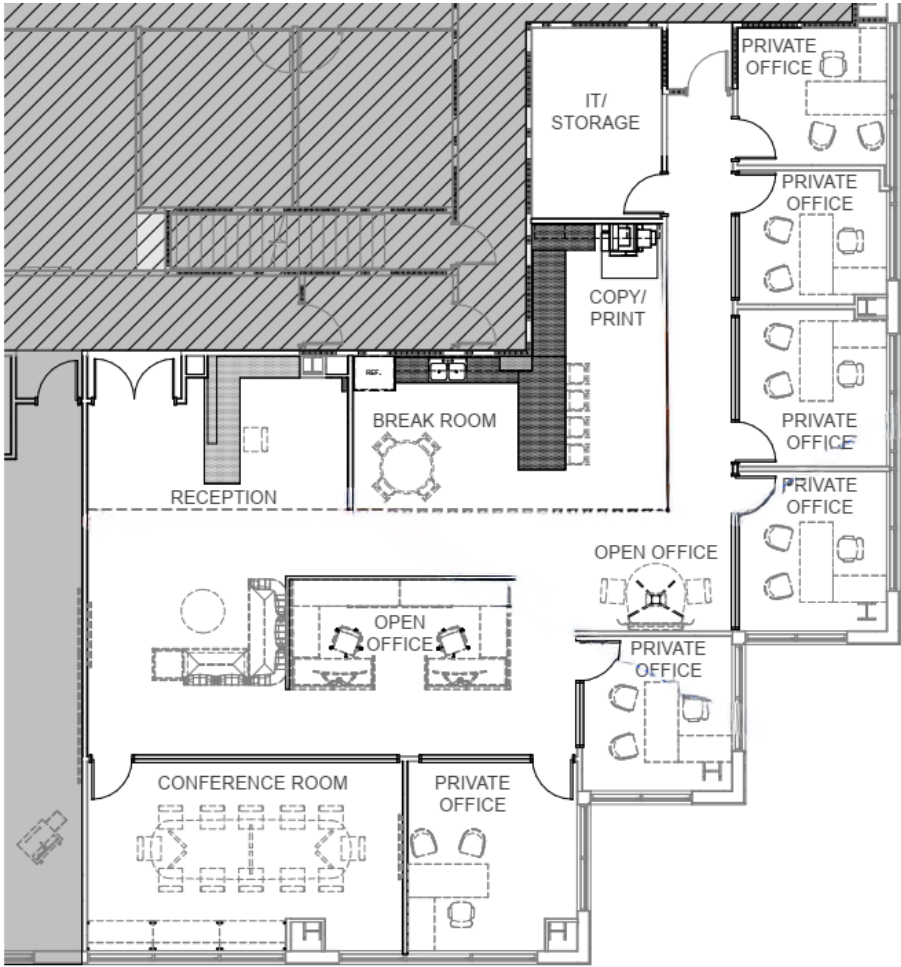
AVAILABILITY

BLDG. 12481 Suite 220 4,411 RSF Creative Spec Suite



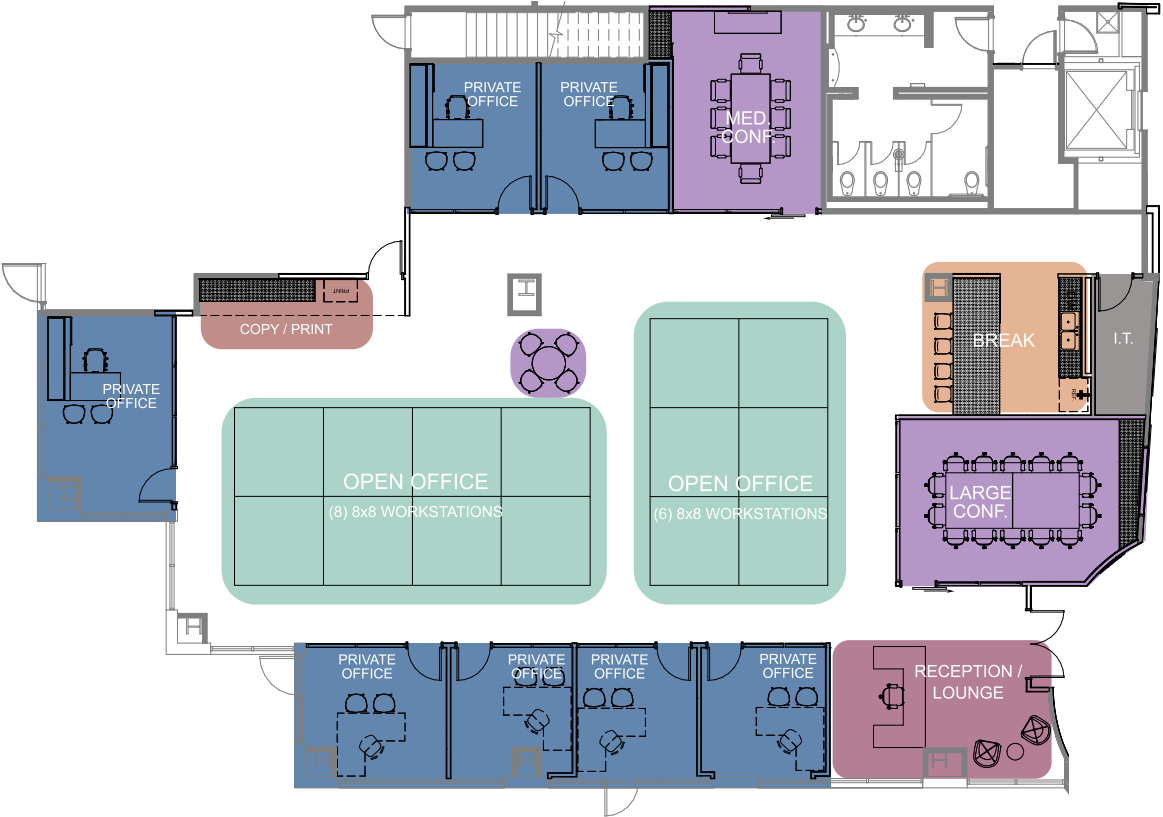
AVAILABILITY

BLDG. 12531 Suite 140 3,679 RSF Spec Suite

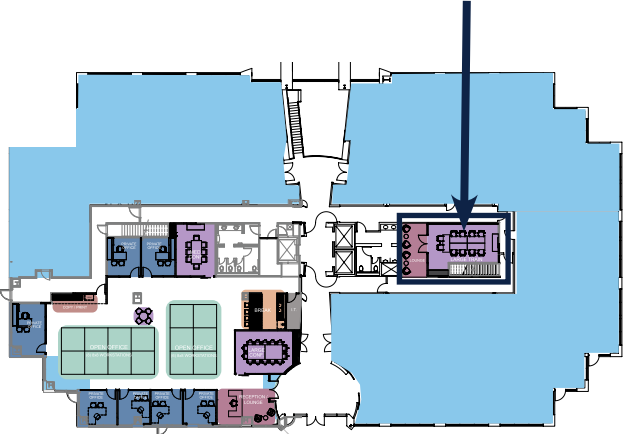


AVAILABILITY

BLDG. 12531 Suite 150 5,947 RSF Creative Spec Suite; Eyebrow Signage Available



*NEW COMMON
AREA TRAINING
ROOM & LOUNGE*



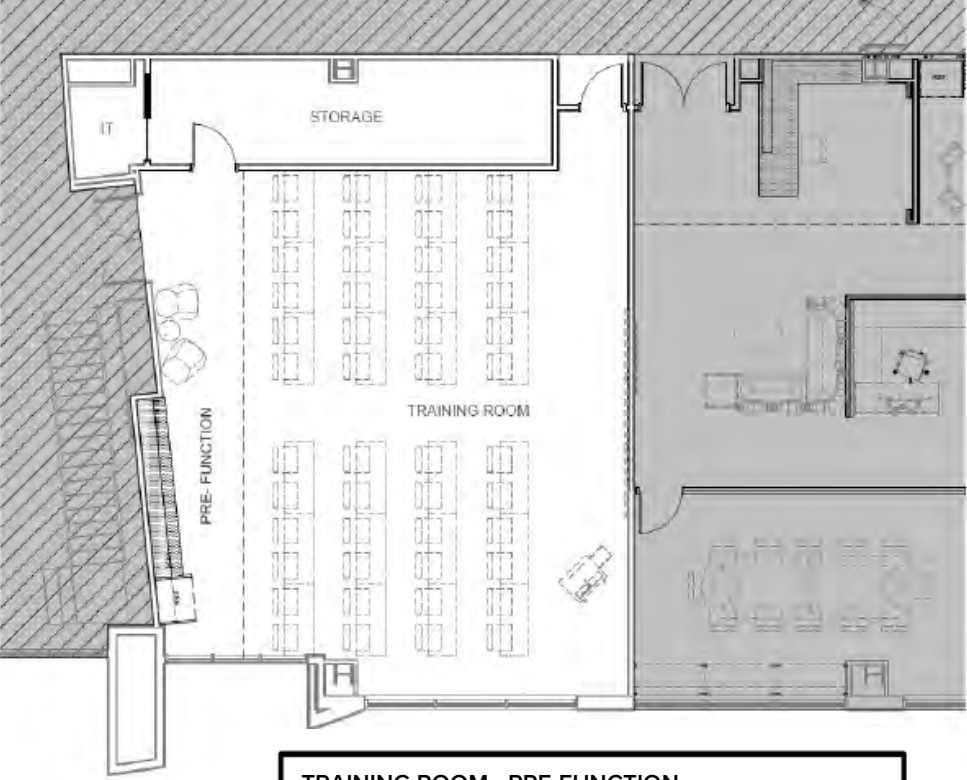
AVAILABILITY

BLDG. 12531

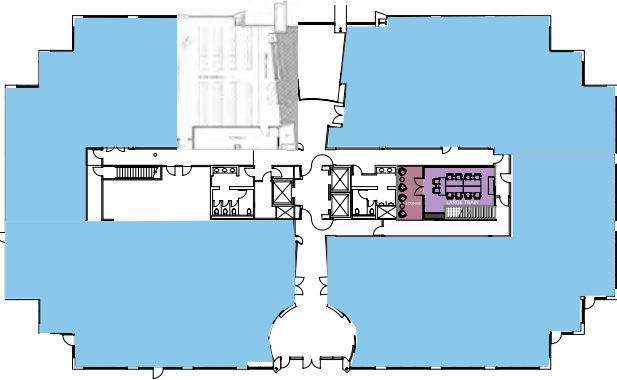
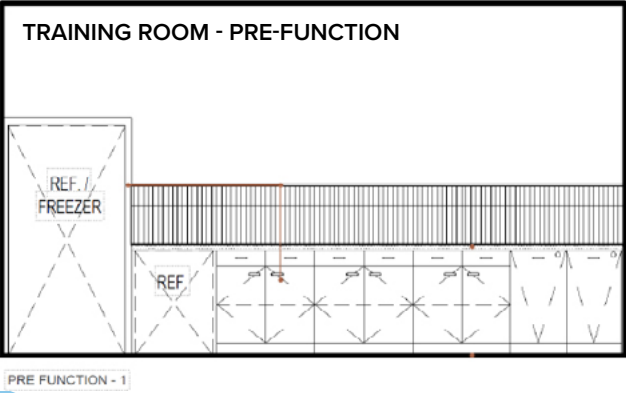
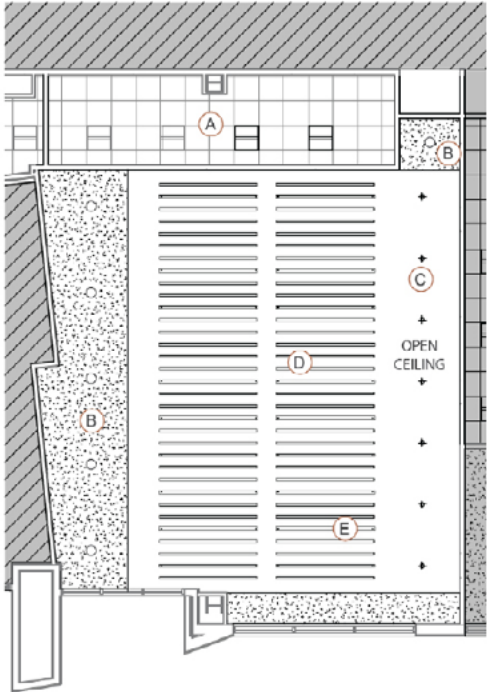
1st Floor

New Training Room | Recently Completed

SPACE PLAN - TRAINING ROOM

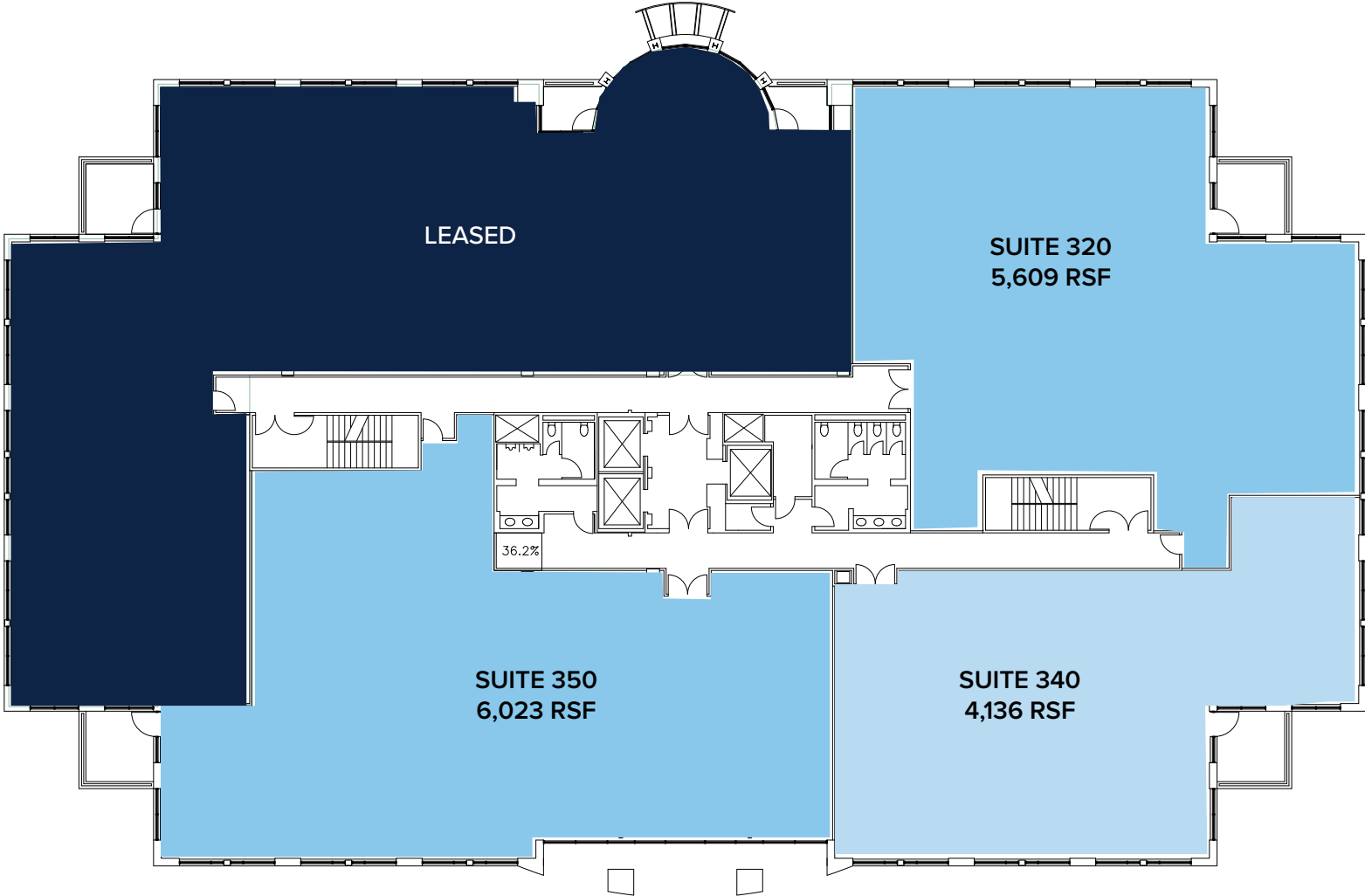


RCP - TRAINING ROOM



AVAILABILITY

BLDG. 12531 3rd Floor 4,136 - 15,768 RSF



BRIAN STARCK

+1 858 546 5486

brian.starck@cushwake.com

LIC #01504078

JOE ANDERSON

+1 760 415 3245

joe.anderson@cushwake.com

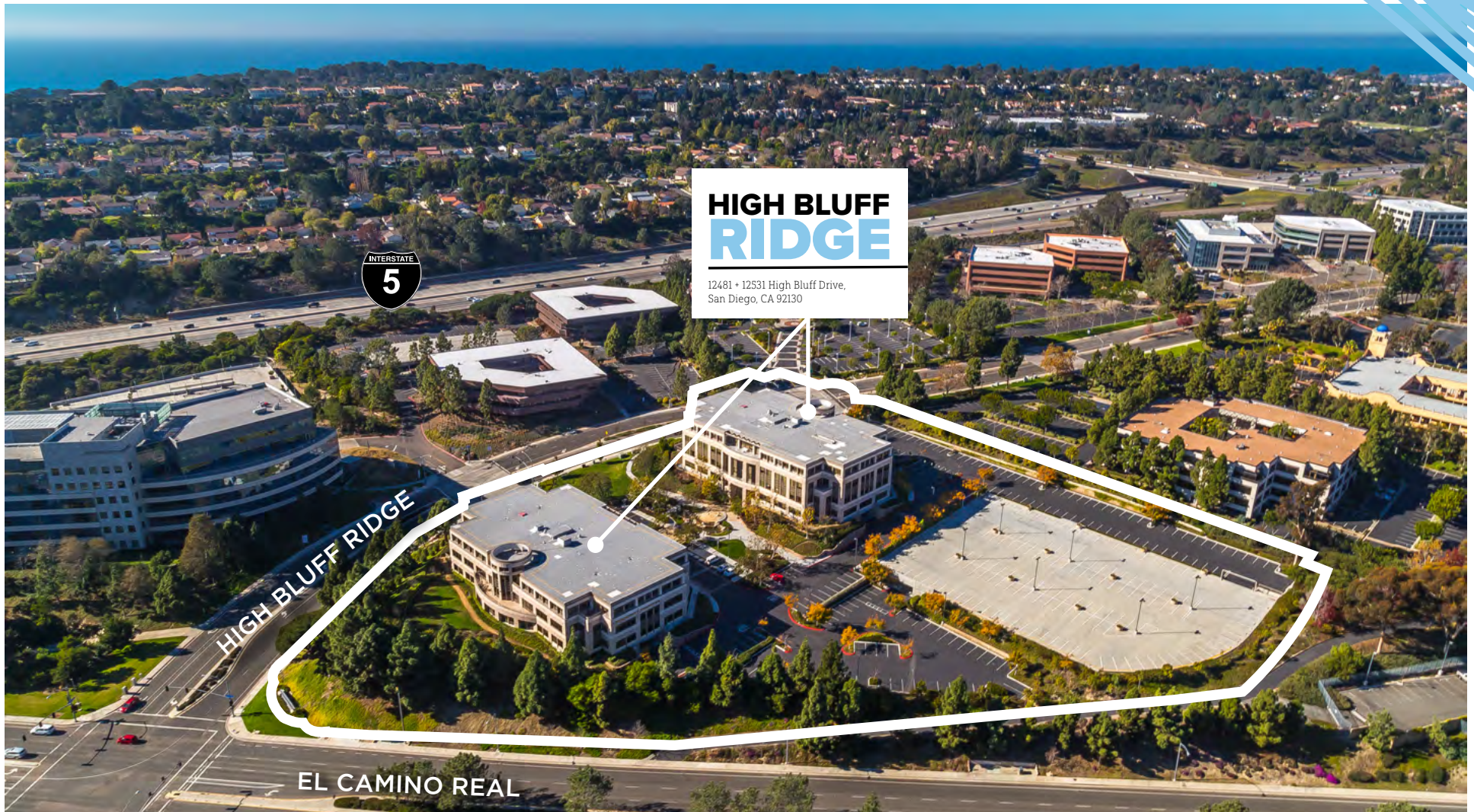
LIC #01280854



PGIM



**CUSHMAN &
WAKEFIELD**



©2025 Cushman & Wakefield. All rights reserved. The information contained in this communication is strictly confidential. This information has been obtained from sources believed to be reliable but has not been verified. NO WARRANTY OR REPRESENTATION, EXPRESS OR IMPLIED, IS MADE AS TO THE CONDITION OF THE PROPERTY (OR PROPERTIES) REFERENCED HEREIN OR AS TO THE ACCURACY OR COMPLETENESS OF THE INFORMATION CONTAINED HEREIN, AND SAME IS SUBMITTED SUBJECT TO ERRORS, OMISSIONS, CHANGE OF PRICE, RENTAL OR OTHER CONDITIONS, WITHDRAWAL WITHOUT NOTICE, AND TO ANY SPECIAL LISTING CONDITIONS IMPOSED BY THE PROPERTY OWNER(S). ANY PROJECTIONS, OPINIONS OR ESTIMATES ARE SUBJECT TO UNCERTAINTY AND DO NOT SIGNIFY CURRENT OR FUTURE PROPERTY PERFORMANCE. COE-PM-West-04.24.2026